

United Nations Development Programme



Empowered lives
Resilient nations

Resilience-based Development Response to the **Syria** crisis



“The political and humanitarian dimensions of the Syria crisis have been recognized from the outset. But there is now heightened awareness that this is also a development crisis. It will have a deep and long lasting impact on the development and future prospects of Syria. Neighbouring countries’ development prospects too have been seriously impacted. The challenge now is to ensure that our collective response to this complex crisis is both humanitarian and developmental in approach.”

Helen Clark
Administrator
United Nations Development Programme

Resilience-based Development Response to the **Syria** crisis

Foreword



Close to entering its fourth year, the crisis in Syria continues unabated, at a devastating cost in human suffering not only in Syria but in neighbouring countries as well.

In addition to loss of life, debilitating injuries, internal displacement and forced migration, Syrians are being thrust into poverty by the day, more than ever before. Half of the population currently lives in poverty and almost one in six Syrians lives in extreme poverty. By Human Development measures Syria today has regressed to the development levels of the late 1970s.

The crisis is also compromising development gains across the region and especially in countries neighbouring Syria, and particularly in Jordan and Lebanon. As host communities in these countries struggled to share scarce resources and extend hospitality, the massive influx of refugees has exceeded local coping capacities and intensified existing vulnerabilities.

The protracted nature of the Syria crisis and its impact on its immediate sub-region have galvanized an international consensus that this is not only a political crisis, not only a humanitarian crisis, but also a development crisis.

To enhance coordination in the region, UNDP deployed in late October a Subregional Development Coordinator to establish a multidisciplinary facility to support the work of Resident Coordinators and Country Offices in the five most affected countries. This strategic investment is also the contribution of UNDP to the Regional United Nations Development Group for the Arab States, and Middle East and North Africa.

Within this framework, members of the Regional UNDG agreed, when they met in Amman in November 2013, that UN agencies need to think and act beyond traditional mandates, to strongly connect the humanitarian and development responses, and to ensure the strongest relevance and value of our work addressing emergency, fragility, resilience and recovery.

The United Nations Development programme (UNDP) has worked closely with its sister UN agencies to formulate a Resilience-based Development response to the Syria crisis, as its contribution to the comprehensive response strategy of the UN.

The Resilience-based Development approach supports capacities of affected communities to cope with immediate needs emanating from the crisis, recover from its impacts and sustain this recovery through development gains over the long-term.

This brochure provides an overview on how we will work within the Resilience-based Development framework respond to the needs at the country level in a manner that allows clear accountability for results and converge on supporting affected communities and societies. We look to you, our friends and partners, to support us in going beyond our traditional approaches and giving this multi-faceted crisis the comprehensive response it deserves.

Sima Bahous

United Nations Assistant Secretary-General
UNDP Assistant Administrator and Director of Regional Bureau for Arab States
Chair of the Regional UNDG for the Arab States, and Middle East and North Africa



Impact of the Syria CRISIS

Almost three years into the armed conflict in Syria, the crisis and its spill-over into neighbouring countries are having a deep and widespread effect on development.

The refugee influx, coupled with the dramatic impact of fighting on Syria's infrastructure and economy, is compromising hard-won development gains and putting the entire future development of the region at risk.

The conflict has rolled back Syria's human development achievements by 35 years, with more than 50 percent of the population now living in poverty, as households exhaust their savings and coping strategies. The unemployment rate has reached almost 50 percent with 2.33 million jobs lost from the economy in recent years.

Unlike other conflicts more than 80 percent of the Syrian refugees live amidst communities in the host countries and not in designated camps. In these countries, the large refugee influx is not only changing the demographic balance, which threatens to heighten social tensions, but also causing increased competition for limited resources, such as land, water and jobs.

From a development perspective, the enormous influx of refugees in host communities is not matched by an equal expansion of municipal and social services, such as health, education, sanitation, housing and socio-economic infrastructure. Water availability is increasingly critical in a region that has the least water per capita in the world. A collapse in economic opportunity and increased competition for jobs is driving a spike in poverty and unemployment among the most affected host communities, which are already poor and vulnerable. As a result, rising tensions threaten social cohesion and the rule of law.



\$ 48.4
billion in
economic
losses

In Syria

- Over **120,000 killed** in fighting, with close to **600,000 injured**;
- **9.3 million** in need of **humanitarian assistance**;
- **6.5 million** people now **displaced** from their homes;
- **12.6 million** now living in **poverty** and **4.4 million** in **extreme poverty** because of the crisis;

In neighbouring countries

- **2.3 million refugees** in Egypt, Iraq, Jordan, Lebanon, Turkey and North Africa;
- **Refugees** now make up approximately **10 percent** of the population in **Jordan** and more than **20 percent** in **Lebanon**.

Vulnerability

The inability to cope with shocks and to access/ provide basic services.

Resilience

The ability (of people and communities) to anticipate, manage, and recover from shocks, to protect and sustain human development gains.



Resilience-based Development

Responding to the multiple dimensions of the crisis will enable communities to improve their capacity to absorb the shock of this and future catastrophes - that is, to regain and enhance their resilience.

In Syria and in host communities in neighbouring countries, UNDP is working with affected households and communities to address the immediate needs, while also laying the building blocks for medium- and long-term recovery and development.

Through a resilience-based development approach, UNDP takes a longer-term perspective from the outset, focusing on strengthening the capacity of communities to **cope** with the crisis through immediate emergency interventions, by bolstering livelihoods, housing, infrastructure and basic services; **recover** from the socio-economic impact of the crisis by regaining productive assets; and **sustain** this recovery toward development through a functioning and peaceful socio-economic and political environment where development gains are protected.

Activities so far have included: vocational skills training, livelihoods creation, business support, rapid employment generation, crisis management at the local level and peacebuilding through the media, community organizations and school teachers.

UNDP is also committed to helping local governments bolster basic services to respond to the increasing demands and strains placed on war-affected communities inside Syria, as well as host communities in neighbouring countries.

Resilience-based development recognizes local and national ownership, and addresses the specific context in each country. It builds on the existing abilities and skills of affected people, communities and host governments, implementing measures that will affect the long-term (sometimes decade-long) development prospects of a country. Strengthening resilience also means ensuring that human rights and gender equality are considered and all activities are conducted through a lens of sustainability and conflict sensitivity.

A resilience-based development response for Syria aims to achieve three inter-related strategic objectives: Coping, Recovering and Sustaining.

A Coping

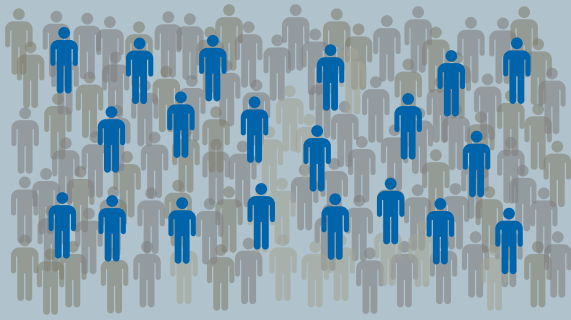
Local governance structures are empowered to bolster livelihoods, housing, infrastructures and basic services to respond to the increased demand.

B Recovering

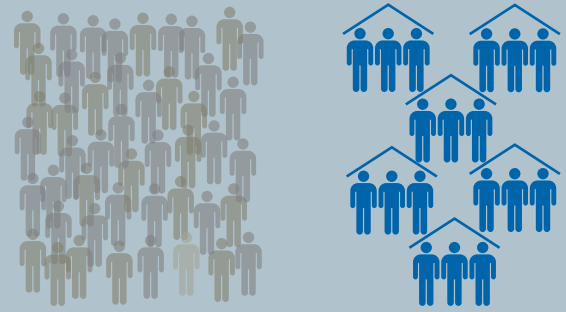
Vulnerable households (internally displaced, refugees and affected communities) are empowered to recover from the socio-economic impact of conflict and displacement.

C Sustaining

Economic, social and political institutions are strengthened in all neighbouring countries to ensure sustainability.



High refugees rate among local communities



Local communities near refugee camps

Different Priorities for Diverse Settings

The resilience-based development approach is anchored in the assessment of household, community/sector and national vulnerabilities. In the context of the Syria crisis, understanding how the conflict has rendered communities in neighbouring countries vulnerable is critical for designing targeted context-specific responses. In this vein, 5 scenarios are worth considering:

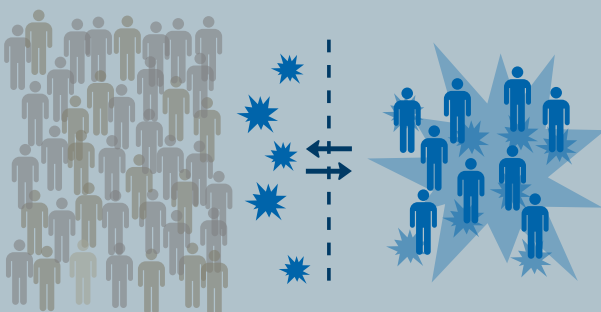
Communities with high concentrations of Syrian refugees: The sudden increase in local population coupled with resource scarcity has heavily stressed basic services and exacerbated social tensions.

Communities near refugee camps: Refugees leave camps in search of resources, services and jobs in neighbouring communities. Increased demand for and competition over sources of livelihood exacerbate tensions with these communities.

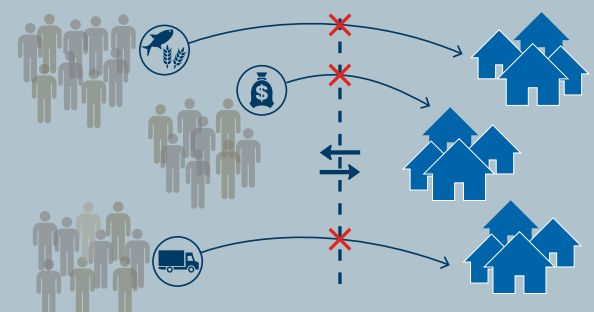
Communities near the Syrian border: Proximity to violence and exposure to bombing, movement of armed groups have put livelihoods and economic activities in these communities at severe risk.

Communities highly dependent on the Syrian economy: Complex networks of trade and labour movements have been interrupted and have led to serious economic loss in these communities.

Regional economic and social impact: The regional insecurity created by the conflict has had a negative socio-economic impact across the region at the national level.



Local communities near cross-border conflicts



Local communities cross-border trade interrupted

UNDP *in Action*



Syria

The Humanitarian Livelihoods Programme is helping affected communities avoid further destitution, marginalization and dependence on aid by providing emergency income to people who have lost jobs or businesses, repairing basic community infrastructure and service delivery and developing local capacity for early recovery. Special focus is placed on vulnerable groups, such as people displaced by the conflict, young people, women and women-headed households, and people with disabilities.

Resources required
(US\$ million)

45.2



Lebanon

UNDP's Stabilization and Recovery Programme seeks to support the resilience of vulnerable host communities, promote peacebuilding and conflict prevention, while also strengthening the capacity of key national institutions to coordinate recovery and manage the response to the crisis.

Resources required
(US\$ million)

55.9



Jordan

The overall goal of UNDP's programme, Mitigating the Impact of the Syrian Refugee Crisis through Support to Host Communities, is to sustain social and economic stability by responding to the urgent needs of crisis-affected host communities, while also helping them to absorb refugees in a way that doesn't exacerbate existing tensions or increase vulnerability to poverty. Work is mostly concentrated in Mafraq and Irbid.

Resources required
(US\$ million)

32.4



Iraq

In the Kurdistan Region of Iraq, UNDP's project, Accelerated Support for non-camp Syrian Refugees and their Host Communities is assisting local communities to cope with the influx of Syrian refugees. Another project, Enhancing Protection for Vulnerable Women and Girls among the Syrian Refugees from sexual and gender-based violence (SGBV) and trafficking, helps establish prevention and protection mechanisms for vulnerable women and girls.

Resources required
(US\$ million)

10.7



Turkey

The UNDP programme, Mitigating the Impact of the Syria Crisis on Turkish Communities in the Southern Anatolia Region is helping host communities to accommodate the large numbers of refugees.

Resources required
(US\$ million)

22.6



Delivering Results Through Presence & Partnership

With permanent offices in Amman, Ankara, Baghdad, Beirut, Damascus (and additional UN hubs in Syria), and Erbil, as well as an extensive network of field-based sub-offices and expertise in the region and headquarters, UNDP is well-equipped with highly skilled national and international staff and local partnerships. UNDP is able to rapidly respond to changing situations in crisis countries by working with governments and national platforms, and through a network of NGOs and local organizations to reach otherwise inaccessible areas. Progress is monitored through well-established monitoring & evaluation systems and strict application of results-based management and external evaluations.

Supporting the Overall UN Approach to the Crisis - One UN

At the country level, UNDP works closely with national and local governments and municipalities, sister UN agencies, national and international NGOs to provide a coordinated and evidence-based response to the Syria crisis. In Syria, the UN-led Livelihoods Assessment, together with quarterly socio-economic updates of the impact of the crisis, informs the resilience-based response. In Jordan, UNDP, together with the UN Country Team supported the government in conducting the Needs Assessment Review of Impact of the Syrian Crisis on Jordan. This assessment lays the ground for the National Resilience Plan led by the Government of Jordan. A similar exercise supported by the World Bank and the UN, produced the Economic and Social Impact Assessment for the Syria Crisis in Lebanon, leading to the formulation of a government-led Lebanon Stabilization Roadmap in response to the crisis.

At the regional level, UNDP is working closely with the UN Office for the Coordination of Humanitarian Affairs and other UN agencies to design a comprehensive regional strategy and framework guided by national plans for supporting and monitoring the response to the crisis.



3 Years +

Of

**ARMED
CONFLICT**

6,500,000 +
Displaced

120,000 
Human Lives Lost



In Syria, **12.6 million** people now living in poverty and **4.4 million** in extreme poverty because of the crisis.


UNDP's Sub-Regional Facility for the Syria Crisis

UNDP has established a Sub-Regional Response Facility for the Syria Crisis, in Amman, to support UN Country Teams and national partners, including non-governmental and civil society organizations, to effectively implement resilience-based development in the context of the Syrian Crisis. It achieves this through proposing quick and high-impact solutions for vulnerable communities and for promoting social-cohesion initiatives, fast-tracking in depth research for evidence based programming, and engaging partners, including the private sector.

While priorities differ according to context, the Facility works in the following core areas:

1. Providing strategic support to UNDP country offices in the sub-region in planning, programming, resource optimization, coordination with other UN agencies and creation of partnerships for an effective response to the crisis;
2. Fostering decentralized cooperation between countries in the sub-region on high-impact solutions for vulnerable communities, while promoting national and local ownership, sustainability and aid-effectiveness.
3. Facilitating strategic and innovative partnerships at a regional level with UN agencies, donors, civil society, and the private sector, to maximize technical and financial resources to best respond to the crisis;
4. Supporting improved coordination, complementarity and coherence of the humanitarian and development work through engaging with UN regional coordination mechanisms for the crisis response to ensure , particularly the Regional undg Working Group on Resilience;
5. Conducting, in collaboration with research institutions, academia and think-tanks, research necessary to enhance the understanding of the crisis in order to improve programme development and implementation.
6. Establishing a solid knowledge management capacity to capture and disseminate lessons learned and best practices in areas of technical assistance to the COs, to enhancing learning and improving performance
7. Communicating and advocating to ensure that key stakeholders in the region and globally, understand and support resilience-based development responses to the crisis.

 **\$ 15 billion**
in damages

 **\$ 73 billion**
needed for
reconstruction



Funding Requirements* Regional Resilience Based Development response to the Syria Crisis

Country	Syria	Lebanon	Jordan	Iraq	Turkey
Resources required	45.20	55.90	32.40	10.70	22.60
Requested through the Syria Humanitarian Assistance Response Plan (SHARP)	45.20				
Requested through the Regional Response Plan (RRP6)		39.80	19.70	10.70	22.60
Total Resources Required		166.80			

Note: Funding for Lebanon and Jordan is being sought through both RRP and other sources. UNDP's Sub-regional Facility has requested funding through RRP6 for an additional \$4 million.



9.3 million people need humanitarian assistance

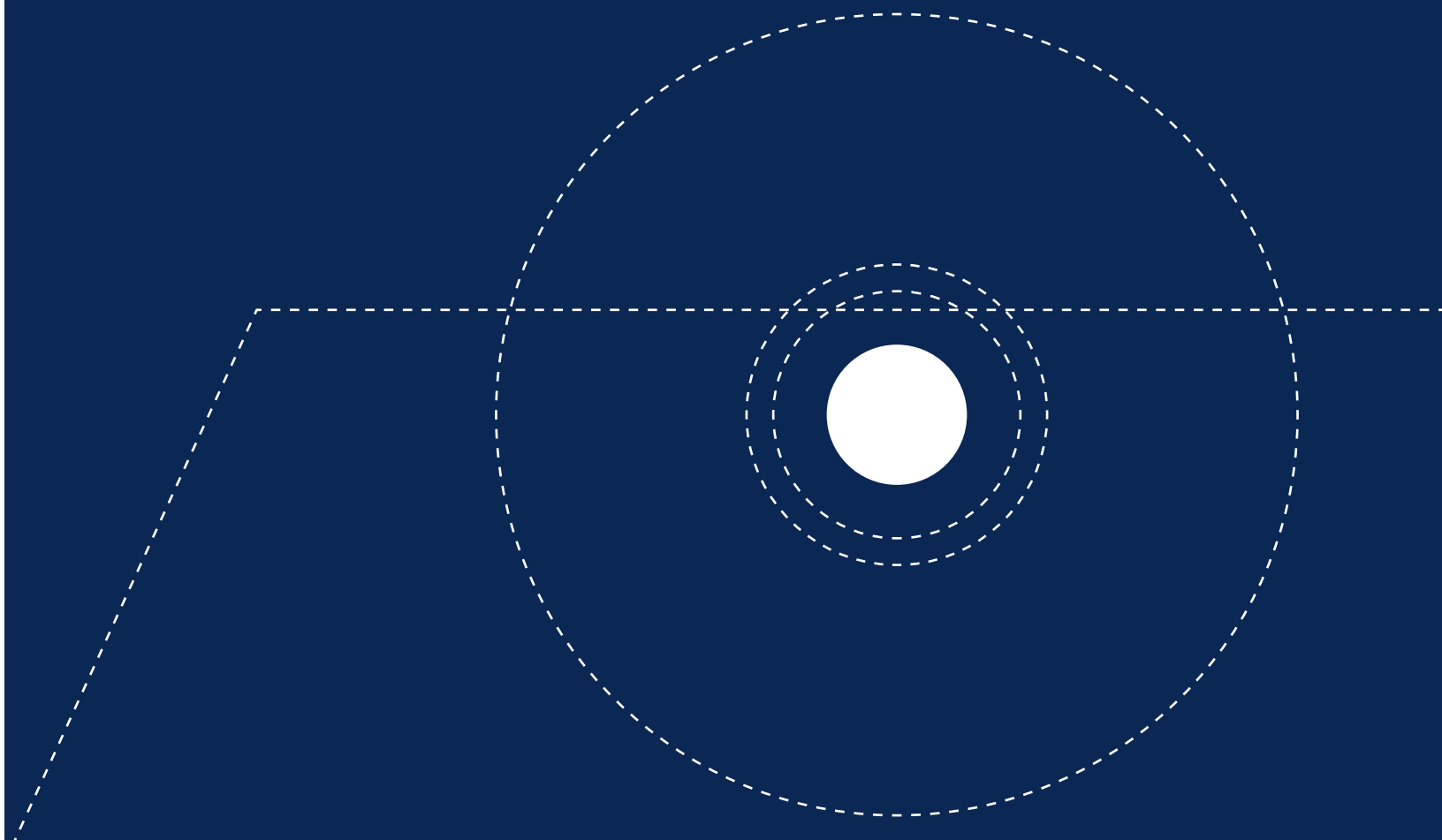


80% of refugee children out of school

“There is growing evidence that the spillovers of the Syrian crisis in neighbouring countries turn out to be highly regressive, affecting socio-economic fabrics, access and quality of basic infrastructures and services in territories and communities.

Beyond the demographic challenge, the crisis is confronting neighbouring countries with a complex and multi-faceted ‘vulnerability challenge’, affecting the broad spectrum of human development indicators in neighbouring countries and communities.”

Gustavo Gonzalez
UNDP Sub-Regional Development Coordinator
From the Syria Regional Response Plan 6





Empowered lives
Resilient nations

For further information,
please contact:

Gustavo Gonzalez
Sub-regional Development Coordinator
Sub-regional Facility for the Development Response to the Syria Crisis
United Nations Development Programme
Tel: +962 79 -847-7068
gustavo.gonzalez@undp.org

Samuel Rizk
Programme Advisor & Syria Crisis Focal Point
Regional Bureau for Arab States
United Nations Development Programme
1 UN PLAZA, NY 10017
Tel: +1 212-906-5206
Samuel.rizk@undp.org

Annexes

UNDP in *Action*



Syria

The Humanitarian Livelihoods Programme is helping affected communities avoid further destitution, marginalization and dependence on aid by providing emergency income to people who have lost jobs or businesses, repairing basic community infrastructure and service delivery and developing local capacity for early recovery. Special focus is placed on vulnerable groups, such as people displaced by the conflict, young people, women and women-headed households, and people with disabilities.

UNRC/HC and UNDP RR: Yacoub El Hillo [yacoub.elhillo@one.un.org]
UNDP Country Director: Janthomas Hiemstra [janthomas.hiemstra@undp.org]

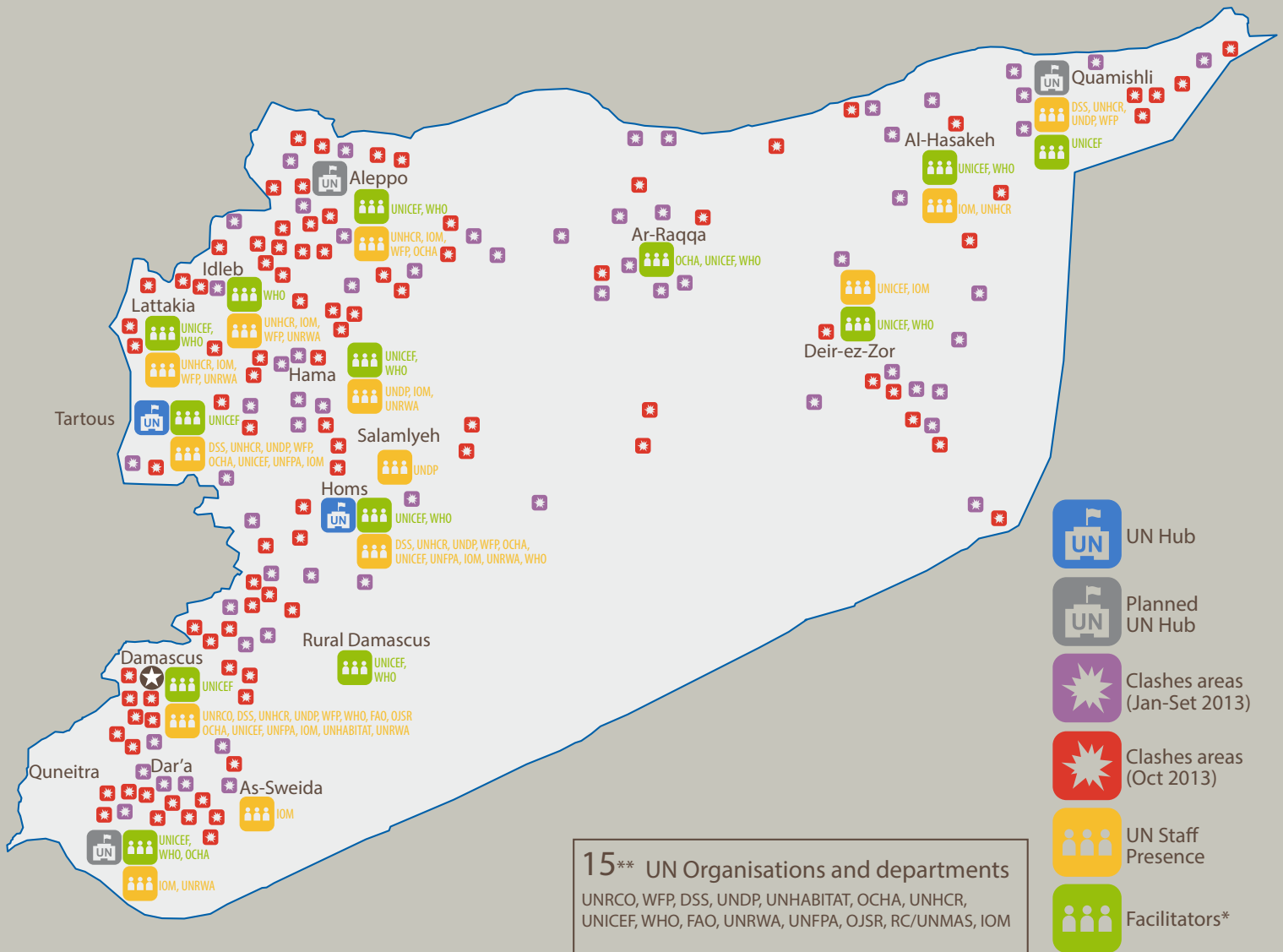
Some current and planned activities include:

- Providing emergency employment to people in affected areas, especially Aleppo, Deir Ezzor, Homs and Tartous so they can quickly rebuild and rehabilitate destroyed housing and infrastructure, such as roads, bridges, markets and schools, and enhance access to basic services. This includes the rehabilitation of 30 ancient Roman wells – which is improving access to safe water in the Al-Ghab area;
- Solid waste removal schemes will also provide employment opportunities, while significantly improving living conditions in shelters and host communities. The tools, equipment and pesticides that are needed to carry out this work are procured locally, which assists the local economy;
- Assisting individuals and communities that have lost small businesses by providing them with cash grants to buy new productive assets. This includes such items as cold storage rooms to preserve meat and vegetables, ice making machines for refrigeration to offset electricity cuts, sewing machines, electric and mechanical workshops, tools for brick production, assistance with rooftop gardens and replacing damaged equipment in a sweet factory. Vocational training, for example in sewing skills so people can establish tailoring businesses, is helping affected people to start other endeavours;
- Providing essential non-food items to affected communities and displaced people living outside shelters. For example, 10,000 displaced families received kitchen sets to complement food distribution by the World Food Programme. UNDP has also partnered with 12 national NGOs to distribute clothes and quilts to more than 50,000 affected families in Syria;
- Providing emergency employment schemes, vocational training and start-up kits to affected women and people with disabilities. In Hassakeh, a sewing workshop was established to produce clothes that were later distributed through local NGOs to displaced people; and
- Providing medical aids to people with disabilities (such as prosthetics, artificial limbs, crutches, and wheelchairs, among others), as well as a range of physiotherapy treatment, psycho-social support, vocational training and start-up kits for quick income generating activities.

Syria Funding Requirements

Outputs	Resources required (US\$ million)
Emergency employment opportunities provided for improved service delivery and repair of basic community infrastructure	13.5
Emergency support for restoration/ stabilisation of disrupted livelihoods provided	19.3
Output 3: Emergency support provided for vulnerable groups with special attention to women-headed households and people with disabilities	4.1
Output 4: National and local capacities for community resilience enhanced	1.3
Output 5: Coordination for emergency livelihoods enhanced	1.0
Project management, security, transportation, communication, M&E, GMS	6.0
TOTAL	45.2

Syrian Arab Republic: Humanitarian Presence: UN (as of Oct 29th 2013)



* Facilitators refer to focal points working for UN Agencies in Governorates.

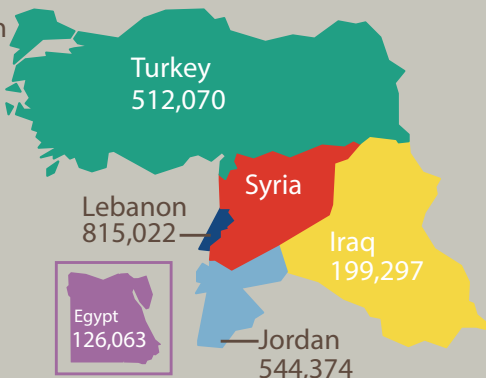
** Although IOM is not part of the UN system, it works very closely with the UN specialized agencies and is part of UN Country Teams around the world

Source: DSS, OCHA, UN agencies

The boundaries and names shown and the designations used on this map do not imply official endorsement or acceptance by the United Nations.

Syria Regional Response Plan Funding 2013 (US\$)

2.211 million Refugees



Requirements

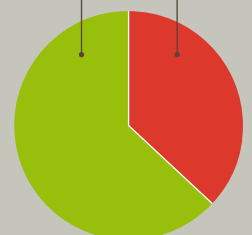
2.982 bn

Funded
1.864 bn

Shortfall
1.117 bn

Funded
63%

Shortfall
37%





Lebanon

UNDP's Stabilization and Recovery Programme seeks to support the resilience of vulnerable host communities, promote peacebuilding and conflict prevention, while also strengthening the capacity of key national institutions to coordinate recovery and manage the response to the crisis.

UN RC/HC and UNDP RR: Robert Watkins [robert.watkins@undp.org]
UNDP Country Director: Luca Renda [luca.renda@undp.org]

Some current and planned activities include:

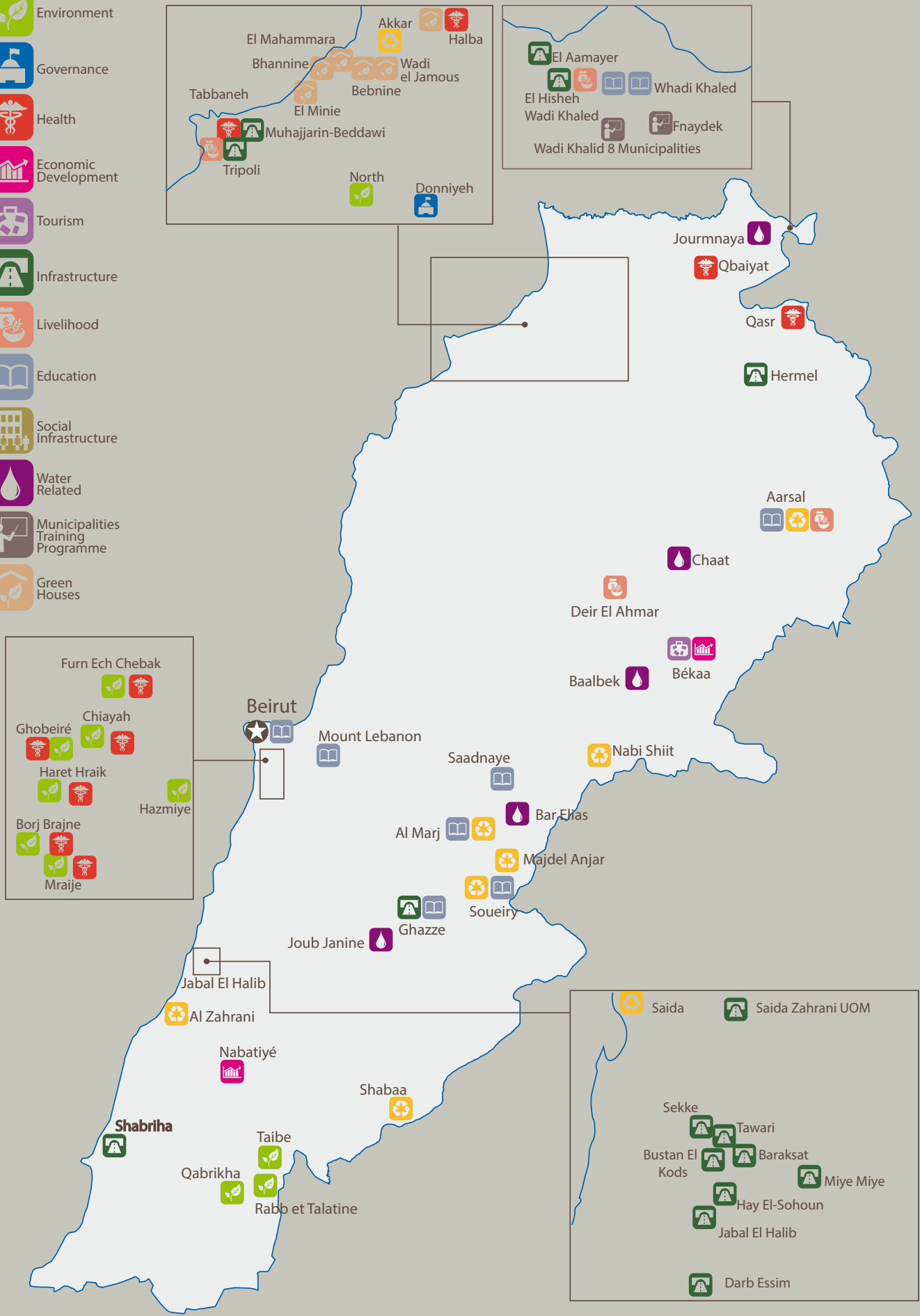
- Helping civil society organizations and local governments cope with the increasing presence of Syrian refugees - by working to improve the delivery of health, education, water, sanitation, and waste management for over 300,000 people. This has so far included schemes to improve drinking water infrastructure and waste management systems, giving equipment to schools and primary health care clinics, and supporting youth and cultural centres;
- Providing emergency employment schemes, linked with vocational training, especially for women and young people in host communities. This will eventually reach more than 300,000 people;
- Working with local economic development agencies to promote business links and create employment. In Bekaa, for example, local bakeries were established and are now producing bread that provides hundreds of school children with a school lunch, while creating over 200 jobs;
- Improving living conditions for Palestinians in Lebanon by providing emergency employment schemes that will fix dilapidated local infrastructure, enhance access to housing and mend basic urban services. There has been an influx of some 30,000 Palestinian refugees from Syria since the crisis began, placing an additional strain on Palestinian refugees already in the country, many of whom were already living with deteriorated urban services. These activities will target an estimated 60,000 beneficiaries; and
- Fostering social cohesion and promoting peace by helping community leaders address some of the underlying causes of conflict, creating 'safe spaces' for community groups to discuss their concerns openly, while engaging with and training national media to promote a culture of peace and tolerance. For example, in Wadi Khaled, one of the areas with the highest concentration of Syrian refugees, UNDP has trained local officials in conflict resolution, mediation, and crisis management. Teachers have also been trained in conflict resolution, in order to help them better manage the rising tensions within classrooms between Lebanese and Syrian students.

Lebanon Funding Requirements

Outputs	Resources required (US\$ million)
Livelihoods and Economic Opportunities	15.0
Local Capacity to Deliver Basic Services	16.5
Living Conditions in Palestinian Gatherings	4.6
Mitigating the Environmental Impact of the Crisis	7.5
Local Mechanisms for Peaceful Coexistence & Conflict Resolution	4.5
Government Capacity for Crisis Management and Response	2.8
LAF CIMIC Programme	3.5
Management, Policy Advocacy and Coordination	1.5
TOTAL	55.9

Responding to the Syrian Crisis in Lebanon - UNDP Projects

-  Waste Management
-  Environment
-  Governance
-  Health
-  Economic Development
-  Tourism
-  Infrastructure
-  Livelihood
-  Education
-  Social Infrastructure
-  Water Related
-  Municipalities Training Programme
-  Green Houses



The boundaries and names shown and the designations used on this map do not imply official endorsement or acceptance by the United Nations.



Jordan

The overall goal of UNDP's programme, Mitigating the Impact of the Syrian Refugee Crisis through Support to Host Communities, is to sustain social and economic stability by responding to the urgent needs of crisis-affected host communities, while also helping them to absorb refugees in a way that does not exacerbate existing tensions or increase vulnerability to poverty. Work is mostly concentrated in Mafraq and Irbid.

UNRC and UNDP RR: Costanza Farina [costanza.farina@undp.org]
UNDP Country Director: Zena Ali Ahmad [zena.ali-ahmad@undp.org]

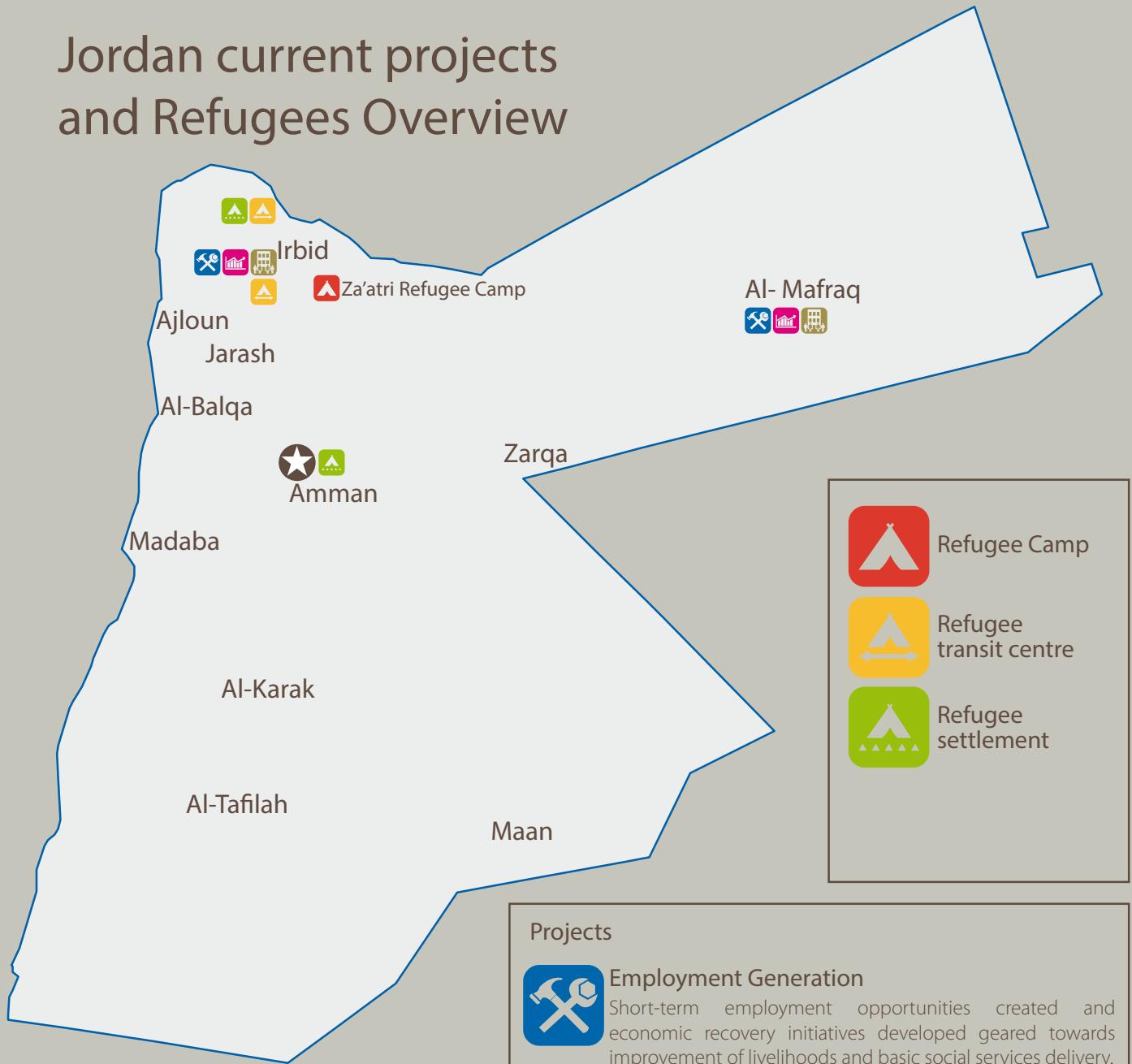
Some current and planned activities include:

- Creation of short-term employment targeting unskilled workers, new graduates and women in host communities using labour-intensive schemes and job placement – in order to boost their income and revive local markets, enabling the population to meet rising costs and reduce vulnerability to further shocks;
- Bridging emergency employment to sustainable livelihoods creation, through the “3 X 6 approach” (built on three organizing principles – inclusiveness, ownership and sustainability, and six (6) discrete steps – enrolment; rapid income generation; savings; joint-venturing; investing; and expanding markets.), targeting on unskilled workers;
- Implementing demand driven vocational and post-training support provided to ensure self-reliance and long term income generating opportunities - thus far more than 300 unemployed young people from Irbid and Mafraq have been trained and placed in jobs with private companies in a variety of fields;
- Helping local small businesses to play an active role in work-based training and employment for young people, income generation and timely and efficient service delivery;
- Encouraging and training unemployed young people to start their own businesses, as well as providing grants, small loans and other managerial advice and support;
- Helping local government to improve municipal and social services to cope with the increased population and their needs, especially in Solid Waste Management, by providing training, equipment, and upgrading infrastructure. For example, UNDP has helped improve solid waste management by providing waste compactors, fogging machines and sprayers, as well as rodent poison and insecticides;
- Working with the relevant line ministries, local development units at governorate level and municipal authorities to set up systems for participatory planning, management and coordination to ensure that all interventions are market driven, respond to community needs and are owned by the community; and
- Continuing to support the “Host community Support Platform” which was established with UN support to serve as the main coordination mechanism comprising government's representatives, donors and development partners to address the emerging needs of the host communities impacted by the Syria crisis.

Jordan Funding Requirements

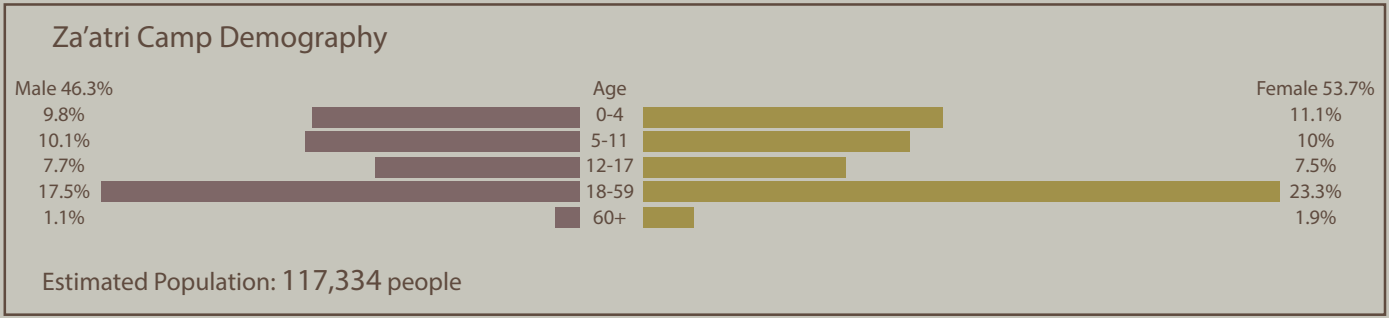
Outputs	Resources required (US\$ million)
Short-term employment opportunities created and economic recovery initiatives developed geared towards improvement of livelihoods and basic social services delivery	8.0
Enhanced local economic development through skills-matching, MSMEs growth and capacity development	2.4
Improved delivery of municipal and social services	16.7
Technical support to coordination of host community concerns	0.9
Programme Management Costs and GMS	3.45
TOTAL	32.4

Jordan current projects and Refugees Overview



Projects

- 
Employment Generation
 Short-term employment opportunities created and economic recovery initiatives developed geared towards improvement of livelihoods and basic social services delivery.
- 
Local Economic Development
 Enhanced local economic development through skills-matchnig, MSMEs growth and capacity development.
- 
Municipal and Social Services
 Improved delivery of municipal and social services.



The boundaries and names shown and the designations used on this map do not imply official endorsement or acceptance by the United Nations.



In the Kurdistan Region of Iraq, UNDP's project, Accelerated Support for non-camp Syrian Refugees and their Host Communities is assisting local communities to cope with the influx of Syrian refugees. It helps reinforce resilience mechanisms and enhance capacities of key stakeholders for inclusive basic service provision, economic empowerment, and social cohesion.

Another project, Enhancing Protection for Vulnerable Women and Girls among the Syrian Refugees from sexual and gender-based violence (SGBV) and trafficking, helps establish prevention and protection mechanisms for vulnerable women and girls.

UN DSRSG/RC/HC and UNDP RR: Jacqueline Badcock [jacqui.badcock@one.un.org]
 UNDP Country Director: Adam Abdelmoula [adam.abdelmoula@one.un.org]

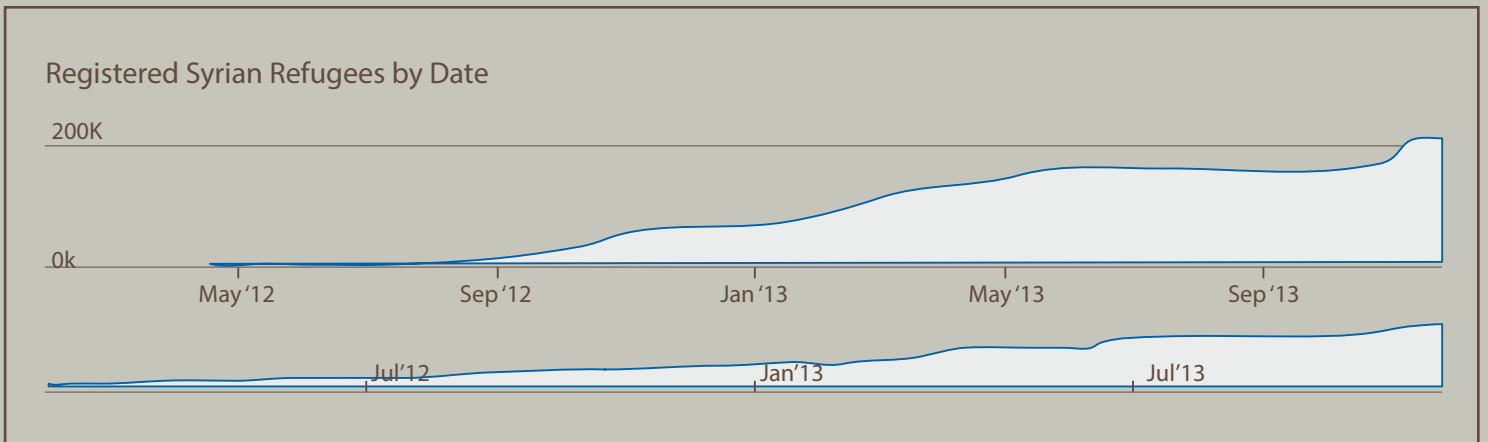
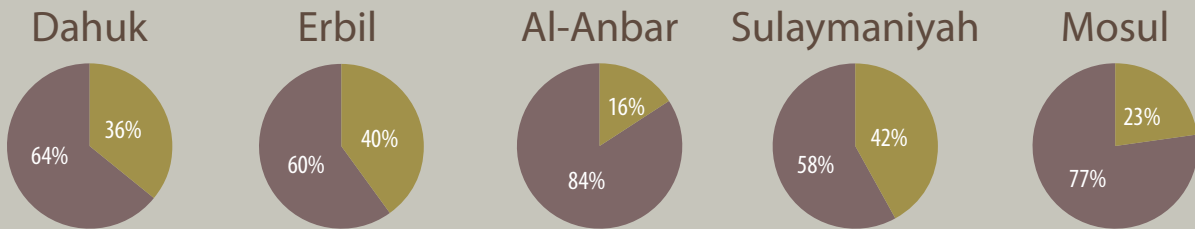
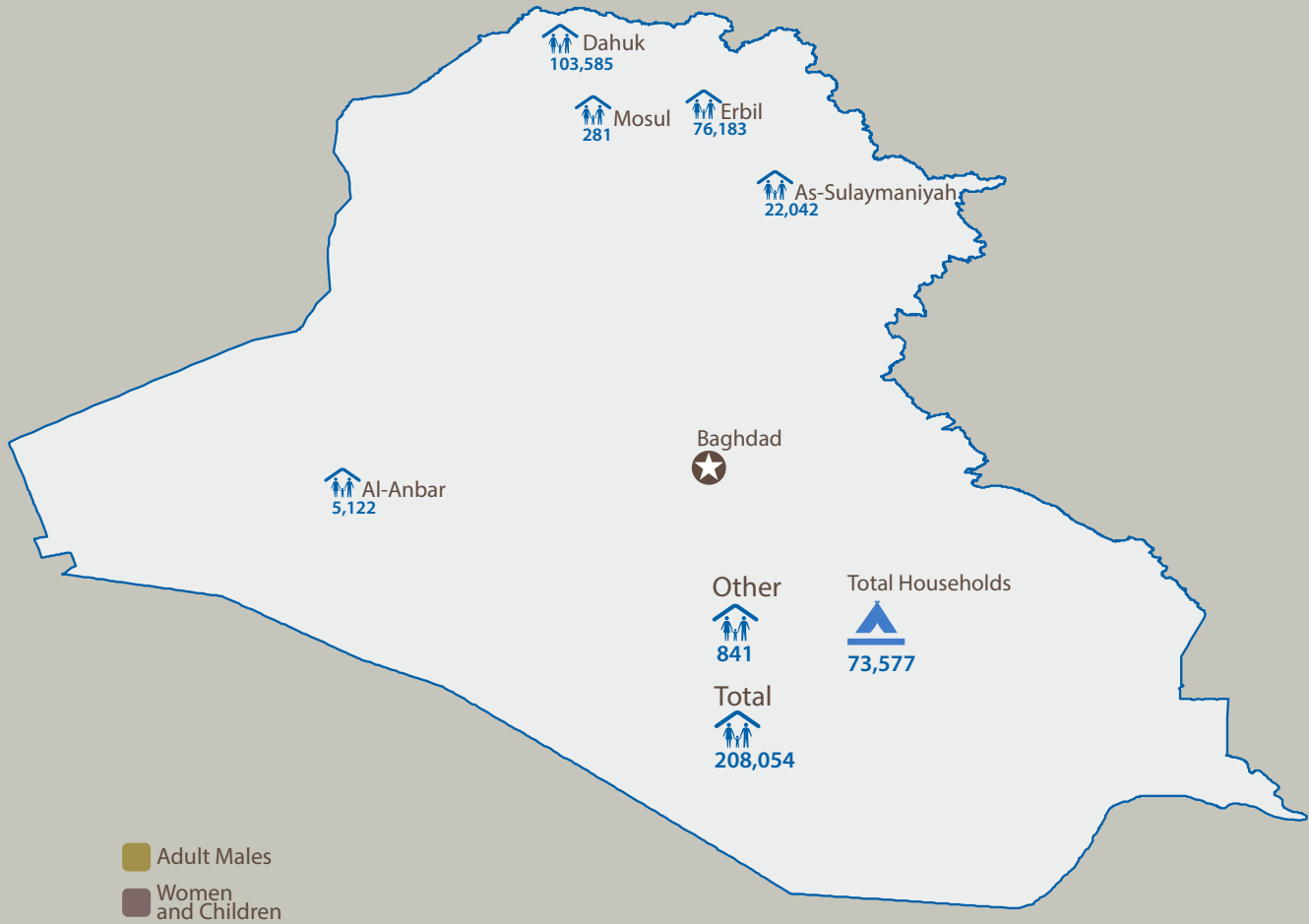
Some current and planned activities include:

- Enhancing capacities of local governments for strengthened coordination and improved service delivery through participatory and inclusive mechanisms to ensure responsiveness to the needs and priorities of Syrian refugees and host communities, especially women and with a focus on improving housing conditions;
- Ensuring equitable access to essential services through establishing grant schemes for civil society organizations and developing infrastructure projects based on gender-disaggregated priority identified through participatory processes that bring together local and refugee populations, government authorities and other partners;
- Identifying local economic opportunities, products and services with potential for growth and job-creation in local and refugee communities, and conducting vocational training, targeting on- and off-camp refugees with a clear focus on the most vulnerable people, including female household heads, women and youth;
- Facilitating access to credit, financial resources and business support services for SMEs in host-communities and in the refugee population, and providing small grants for innovative local level livelihoods and economic development initiatives;
- Supporting and developing the capacity of youth and women groups and civil society organization for collaborative leadership and implementation of multi-cultural/social integration dispute resolution and meditation activities, bringing local and refugee populations together, in order to strengthen social cohesion;
- Raising awareness and providing information on human rights, citizens' entitlements and access to social services with emphasis on equal rights of refugees, women, and vulnerable groups in host communities;
- Raising community awareness on sexual and gender-based violence and human trafficking in host communities and ensuring that refugees, particularly women and girls - are aware of the legal rights of victims, and providing legal counselling and services to victims; and
- Supporting and empowering refugees with disabilities by helping to provide emergency employment, as well as working with NGOs to provide and maintain ortho-prosthetic devices, physiotherapy services and walking aids.

Iraq Funding Requirements

Outputs	Resources required (US\$ million)
Institutional strengthening for improved basic service provision	7.85
Economic empowerment and livelihood enhancement	2.0
Social reconciliation and cohesion	0.85
TOTAL	10.7

Syrian Refugees in Iraq: Location of the Registration





The UNDP programme, Mitigating the Impact of the Syria crisis on Turkish Communities in the Southern Anatolia Region is helping strengthen the resilience and absorption capacity of Turkish communities in the Southern border areas affected by the Syria crisis (in particular those hosting refugees, in Kilis, Gaziantep and Sanliurfa). It aims to contribute to overall stability and prevent escalation of tension between host communities and Syrian refugees.

UNRC and UNDP RR: Kamal Malhotra [kamal.malhotra@undp.org]
 UNDP Deputy Resident representative: Matilda Dimovska [matilda.dimovska@undp.org]

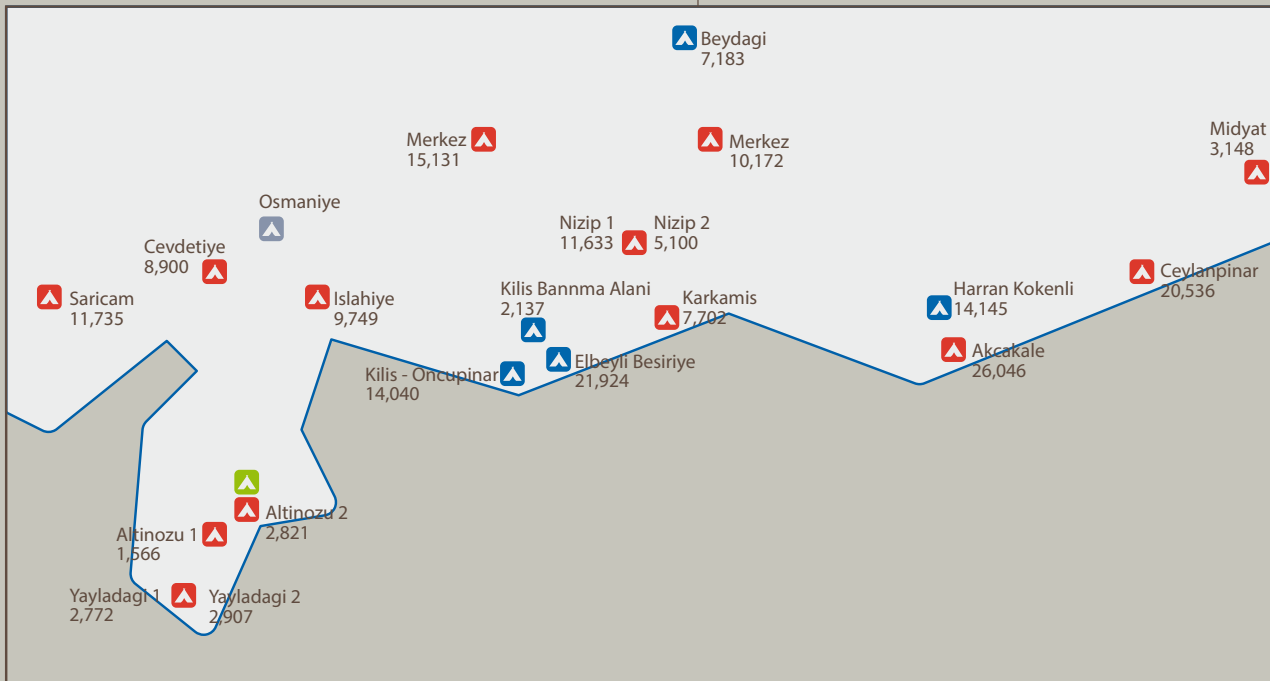
Some current and planned activities include:

- Providing cash grants to households hosting refugees and to most vulnerable households in hosting communities to improve basic living conditions through social assistance;
- Creating immediate, short term employment opportunities through public works focusing on solid waste management, including the removal of garbage from drinking water systems and park protection;
- Providing vocational and business skills training and job placement in social sectors for unemployed Turkish youth, with a focus on young women. The target group will be beneficiaries who received cash grants, but also include other vulnerable groups;
- Carrying out comprehensive livelihoods assessments in Kilis, Gaziantep and Sanliurfa, in coordination with other UN agencies;
- Bridging short to medium term recovery, through implementing compulsory saving schemes for “cash for work” beneficiaries and supporting business plan development for beneficiaries of emergency employment projects, with small grants for most promising proposals, prioritizing those related to cross border trade, women’s economic empowerment and environmental sustainability (the green sector);
- Working with local municipalities and provinces to help equip and assist them in the implementation of annual work plans that are developed in a participatory manner, addressing needs and gaps in terms of access to socio community services and infrastructure, with a particular focus on Solid Waste Management;
- Working with local authorities to build mechanisms for transparent and participatory local community engagement, based on mutual understanding and willingness to work with the authorities to address priority issues, enhancing civil society abilities to claim for rights and the population’s rights in public decision making and monitoring of service delivery through the inclusive manner; and
- Strengthening capacities of local level government structures to respond timely to crisis situations.

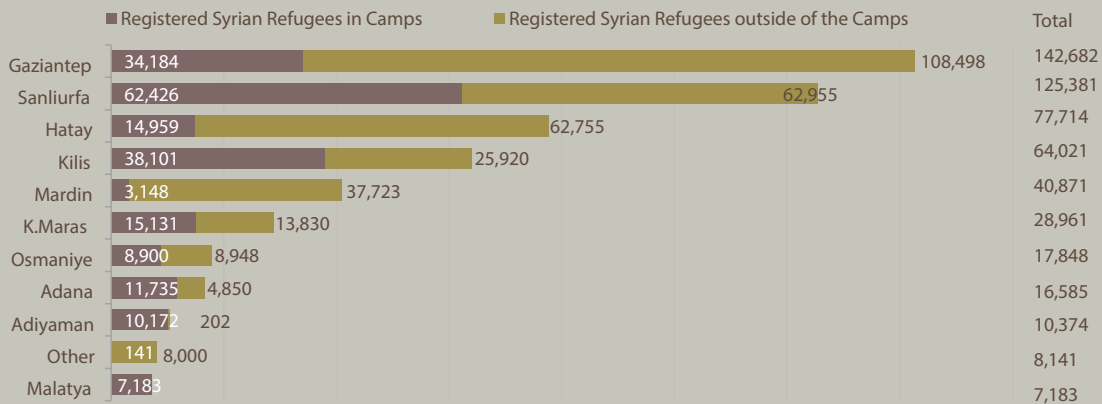
Turkey Funding Requirements

Outputs	Resources required (US\$ million)
Stabilized livelihoods and improvement of basic living conditions for the most vulnerable households hosting Syrian refugees and those living in close proximity of refugee camps.	10.0
Comprehensive livelihoods needs assessment carried out in Kilis, Gaziantep and Sanliurfa	0.1
Resilience of Turkish communities affected by the crises strengthened through diversified livelihoods opportunities	6.5
Institutional mechanisms strengthened at the municipal level to enhance service delivery as well as response capacity for possible future crises (both disaster and conflict related)	4.0
GMS, ISS and Project Management Costs	2.0
TOTAL	22.6

Turkey Syrian Refugee



Population of non Camp Syrian Refugees December 2013



The boundaries and names shown and the designations used on this map do not imply official endorsement or acceptance by the United Nations.