

SD15: SAMPLE OUTLINE OF A COBRA ASSESSMENT REPORT



1. INTRODUCTION

This section may outline the purposes and the objectives of the CoBRA assessment and describe the overall CoBRA assessment team structure (Reference: **SD1: Sample Outline of a CoBRA Assessment Plan** Section 1 and 2).

2. APPROACH

2.1. Characteristics of Field Site

This sub-section may provide the background of the assessment target area and population, citing secondary socio-economic, policy, environment, livelihoods and other contextual information. A map of the assessment target area should be included.

2.2. CoBRA Methodology/Field Data Collection

This sub-section may explain how and when the CoBRA was carried out, by providing the overview of the CoBRA assessment phases and steps, including the details on the field data collection. Tables (see examples below) summarising: 1) the timeframe of the CoBRA assessment (Reference: SD8 Section 4), and 2) the number and location of FGDs and KIIs carried out (Reference: **SD7: Sample Outline of a CoBRA Assessment Logistics Plan**) might be useful. Readers should be referred other background documents such as the **CoBRA Conceptual Framework and Methodology** and the **CoBRA Implementation Guidelines** for full details on the CoBRA methodology.

Steps	Implementation Timeline															
	[Month]				[Month]				[Month]				[Month]			
	W1	W2	W3	W4	W1	W2	W3	W4	W1	W2	W3	W4	W1	W2	W3	W4
Assessment preparation (Step 1&2)																
Field staff training (Step 3)																
Field data collection (Step 4)																
Data Analysis (Step 5)																
Validation workshop (Step 6)																
Report finalization (Step 7)																
Policy/programme advocacy (Step 7)																

Location	Sub-Location	Population	Main Livelihoods	# FGDs	# KIIs
[Location Name E.g. District, Region Municipality, etc.]	[Name]	[No.]	[E.g. Pastoral, Agro-pastoral Peri-urban/Urban, etc.]	[No.]	[No.]
Total		[No.]		[No.]	[No.]

2.3. Constraints and Limitations of Data Collection Process

This sub-section may outline any challenges or limitations faced by the CoBRA assessment team in the data collection or analysis of results. Include efforts made to mitigate or address the challenges.



3. FGD FINDINGS

This section reports on the summarized findings from the CoBRA FGDs. The findings may be presented in the following sub-sections:

- FGD Step 1: What the main hazards or crises facing the communities assessed?
- FGD Step 2-3: What are the main building blocks of a resilient community?
- FGD Step 4: What does a resilient household look like?
- FGD Step 5: Which existing interventions contribute to build resilience and what additional intervention should be prioritized?

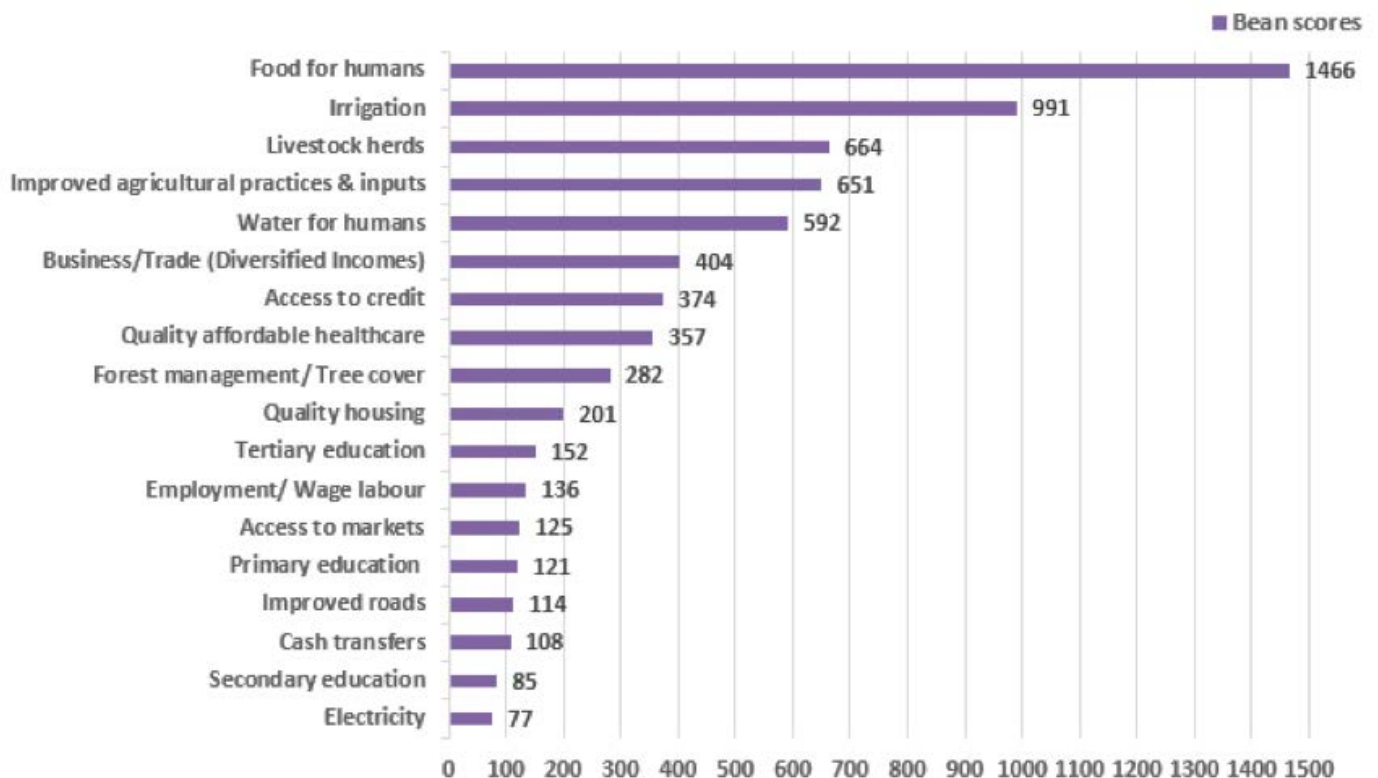
Any comments, inputs and/or feedback provided by the FGD participants during or at the end of the discussion should be included in the relevant sub-sections. Additional information/data gathered from the literature review should also be incorporated into respective sub-sections to cross-compare/ complement the CoBRA findings.

3.1. Main Hazards and Crises

This sub-section reports on the results and findings from the CoBRA FGD Section 2 on what the main hazards or shocks facing the sample communities in the target area are.

3.2. Statements to Define the Community Resilience

This sub-section reports on the results and findings from the CoBRA FGD Section 3 on what their community would look like if everyone had achieved the described 'resilience' status. Full list of the statements may be presented in a chart/tabular format in order from highest to lowest bean scores with narrative explanations (See below example).



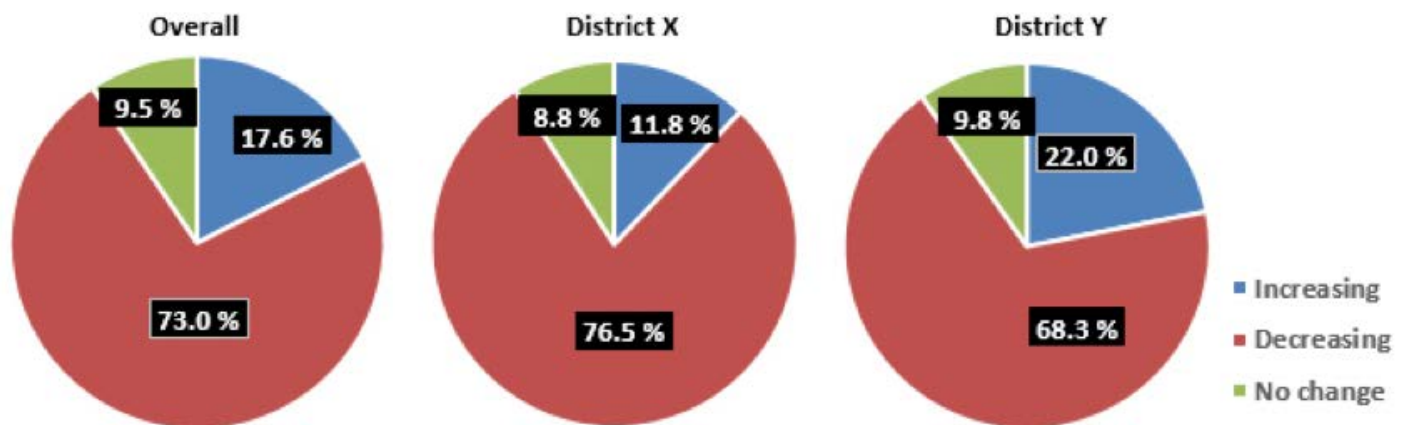


This sub-section reports on the results and findings from the CoBRA FGD Section 3 on what their community would look like if everyone had achieved the described 'resilience' status. Full list of the statements may be presented in a chart/tabular format in order from highest to lowest bean scores with narrative explanations (See below example).

Gender/ Age	District X		District Y	
	External Livelihood Support	Bean Scores	Resilience Statements	Bean Scores
Women	Food for humans	609	Food for humans	386
	Water for humans	216	Improved agricultural practices & inputs	237
	Irrigation	215	Irrigation	160
	Livestock herds	185	Business/Trade (Diversified Incomes)	142
	Improved agricultural practices & inputs	120	Livestock herds	104
Men	Irrigation	215	Irrigation	191
	Food for humans	209	Livestock herds	177
	Water for humans	142	Food for humans	147
	Forest management/Tree cover	119	Improved agricultural practices & inputs	132
	Improved agricultural practices & inputs	114	Access to credit	105
Youth	Irrigation	103	Irrigation	107
	Water for humans	79	Food for humans	79
	Quality affordable healthcare	69	Tertiary education	67
	Forest management/Tree cover	46	Livestock herds	62
	Business/Trade (Diversified incomes)	40	Access to credit	61

3.3. Features of Resilient Households

This sub-section reports on the results and findings from the CoBRA FGD Section 4 on who have attained all/most of the resilience statements in the community and what the common features and attributes are among resilient households. It also presents whether the number or proportion of households considered resilient were increasing, decreasing or staying the same in a chart format with narrative explanations (See below examples).

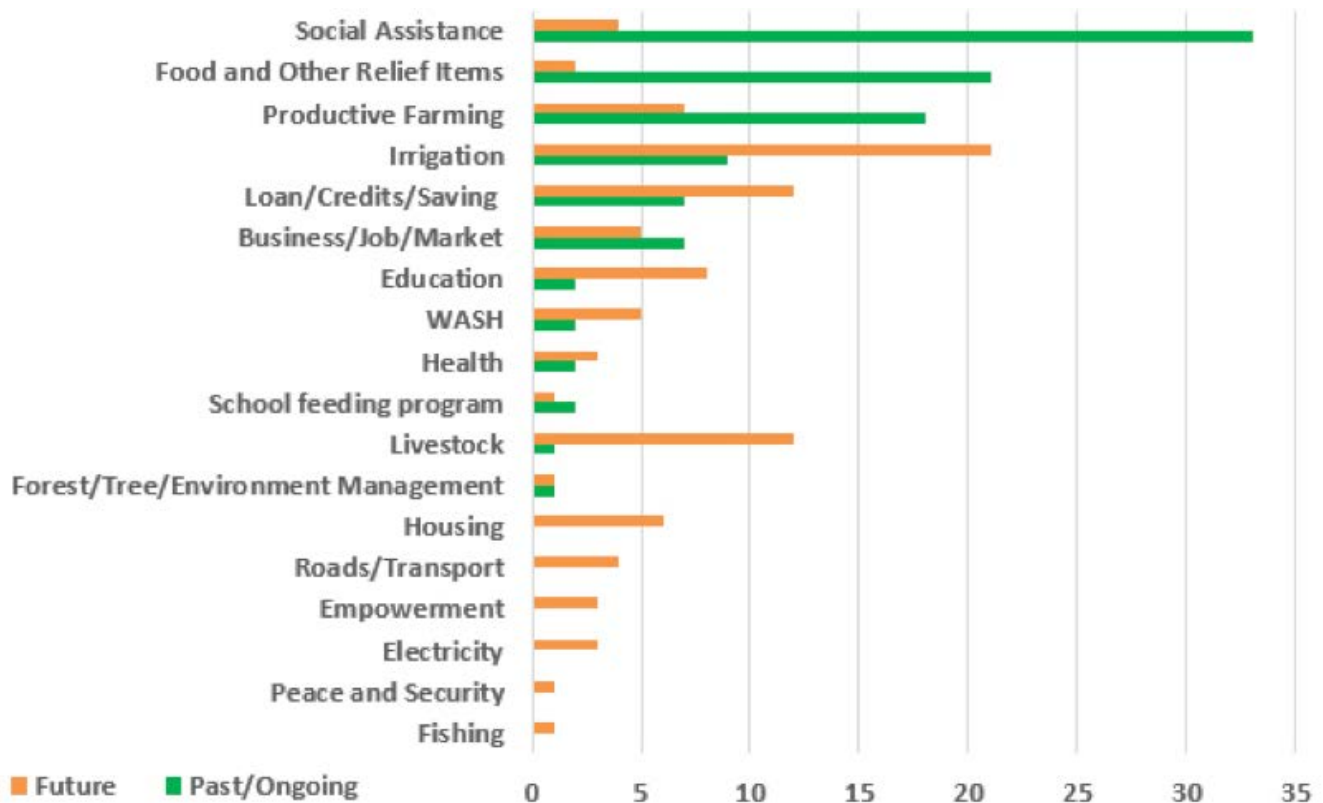


Gender/ Age	District X			District Y		
	Increasing	Decreasing	No change	Increasing	Decreasing	No change
Women	0%	100%	0%	11%	83%	6%
Men	23%	69%	8%	6%	76%	18%
Youth	14%	57%	29%	100%	0%	0%



3.4. Interventions to Drive Resilience Building

This sub-section reports on the results and findings from the CoBRA FGD Section 5 on what types of interventions have best helped in the past and at present/will best help in the future to enhance resilience in the community. The findings on priority interventions in the past/present and future may be presented in a chart/tabular format for ease of comparison (See below example).



4. KII FINDINGS

This section reports on the summarized findings from the CoBRA KIIs. The findings may be presented in the following sub-sections:

- Characteristics and economic activities of resilient households;
- Pathways to resilience; and
- Priority interventions recommended by resilient households.

Any comments, inputs and/or feedback provided by the key informants during or at the end of the interviews should be included in the relevant sub-sections. Additional information/data gathered from the literature review should also be incorporated into respective sub-sections to cross-compare/ complement the CoBRA findings.

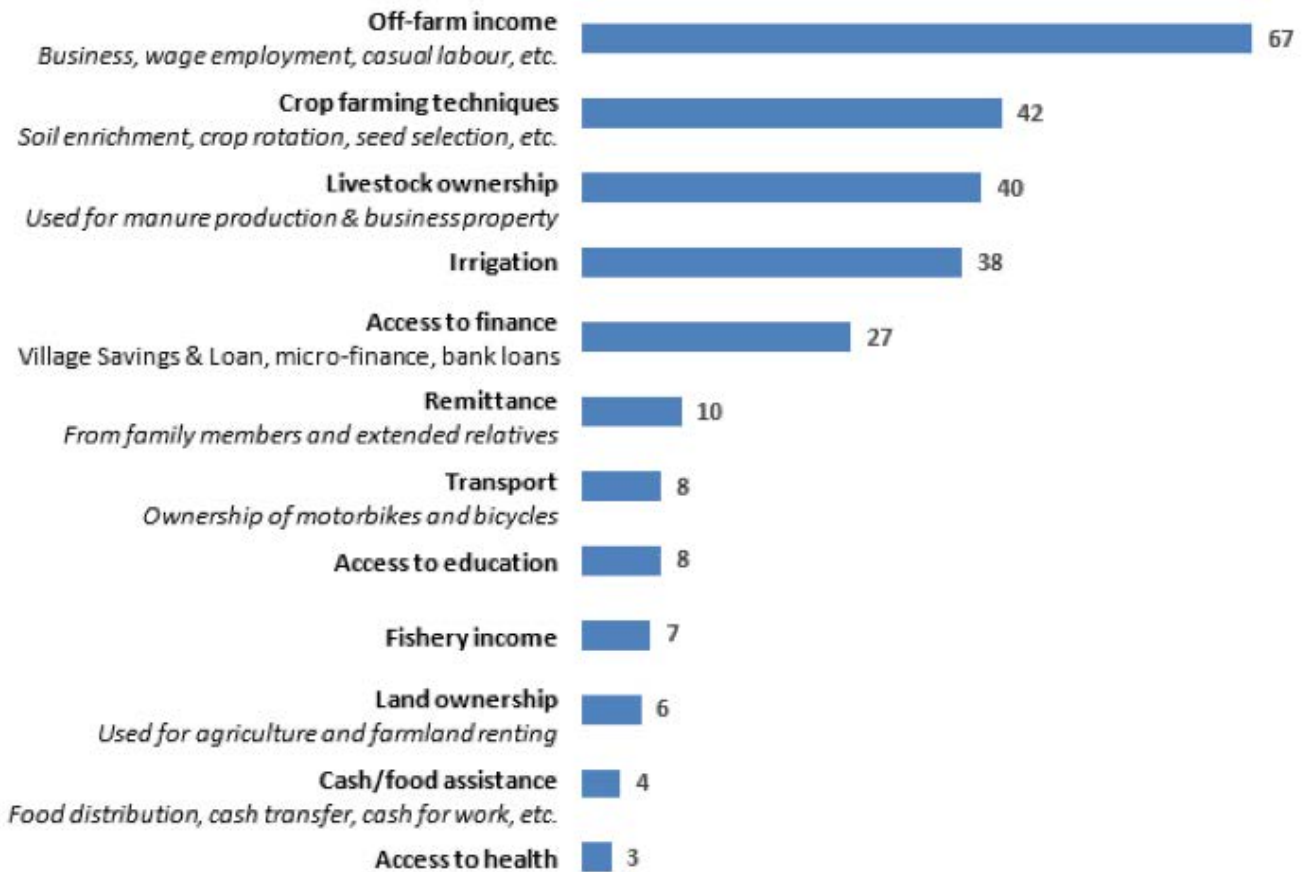
4.1. Composition and Characteristics of Resilient Households

This sub-section reports on the results and findings from the CoBRA KII Section 1 and 2, and summarizes major commonalities and differences observed among the key informants' households (HHs) such as the number of HH members, proportion of male-/female-headed HHs, education level, sources of income, level of access to social assistance/relief support, etc. Sources and types of income should be analyzed particular in terms of degree of reliant on on-farm and off farm activities.

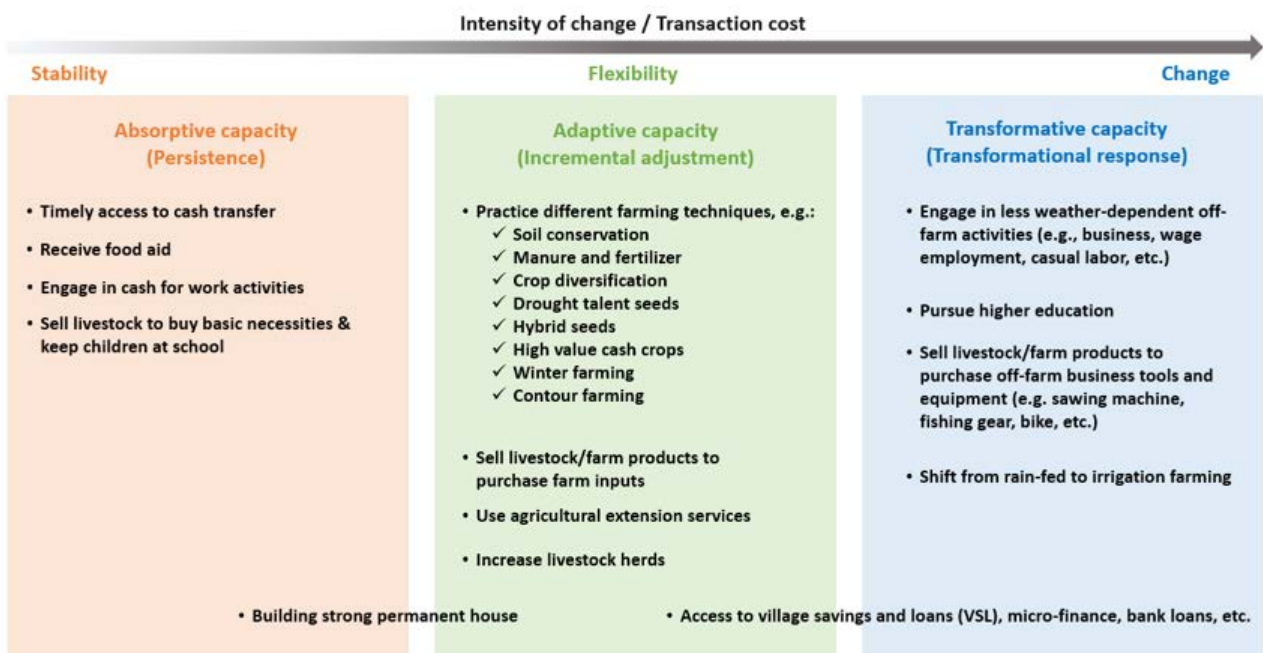


4.2. Pathways to Resilience

This sub-section reports on the results and findings from the CoBRA KII Section 3. Contributing factors to HH resilience (Question 3.1) and duration of HH's resilience (Question 3.3a) may be illustrated in a chart format in order of frequency of mention (See below example).



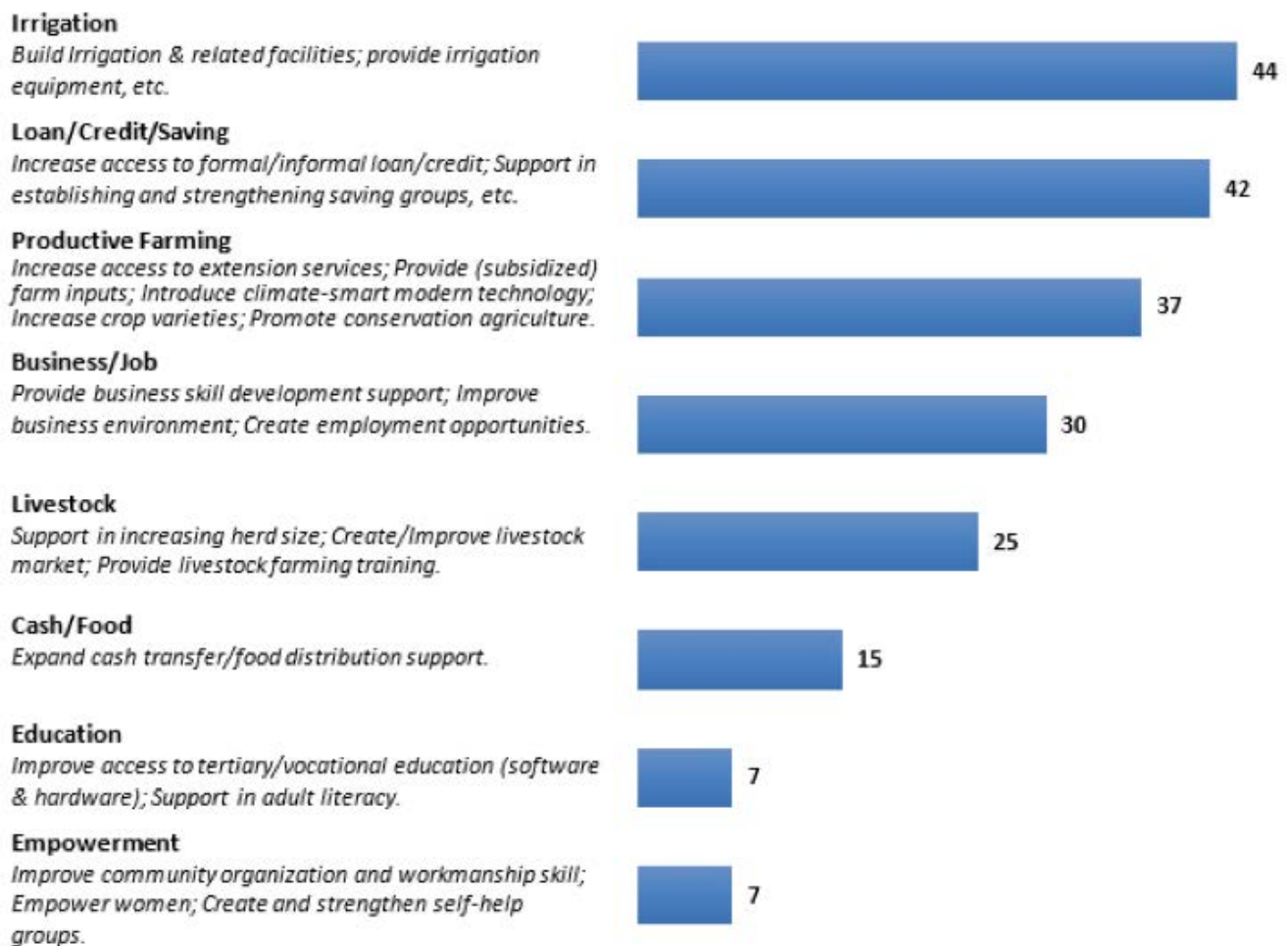
Meanwhile, narrative answers concerning the specific steps taken by the HHs to be resilient may be mapped out as per their contributions to absorptive, adaptive and transformative capacity (See below example).





4.3. Priority Resilience Building Interventions

This sub-section reports on the results and findings from the CoBRA KII Section 4. Results may be presented in a chart format in order of frequency of mention (See below example). Findings in this sub-section should be compared with those in sub-section 3.4 to examine how the visions vary between the nominated resilient households and the rest of the community members.



5. SUMMARY OF COBRA ASSESSMENT REPORT VALIDATION

This section outlines the process of reviewing and validating the CoBRA assessment results and findings with the assessment field team and other local stakeholders. It should summarize the key comments and inputs provided during the discussion and explain how these have informed analysis, conclusions and recommendations. Alternatively, the outputs from the validation process may be integrated into the sections on results (i.e. Section 3 and 4) and/or on conclusions and recommendations (Section 6).



6. CONCLUSIONS AND RECOMMENDATIONS

6.1. Conclusions

This sub-section summarises main findings from the CoBRA assessment, which may include, among others:

- What are the key factors and attributes of community and household resilience in the target area?
- What are the key differences between resilient HHs and others in the assessment target area, and how do resilient HHs have become and remain resilient?
- What types of interventions/services/changes/actions are perceived to best build local resilience?

6.2. Recommendations

This sub-section provides a set of recommendations drawn from the CoBRA data analysis and the subsequent review/validation process for future resilience policymaking, programming, monitoring and evaluation, research and other processes in the assessment target area.

7. ANNEXES

Annexes may be added at the end of the report to provide relevant additional details on the CoBRA assessment such as the list of in the CoBRA assessment field team training participants (Reference: **SD8**), etc.