

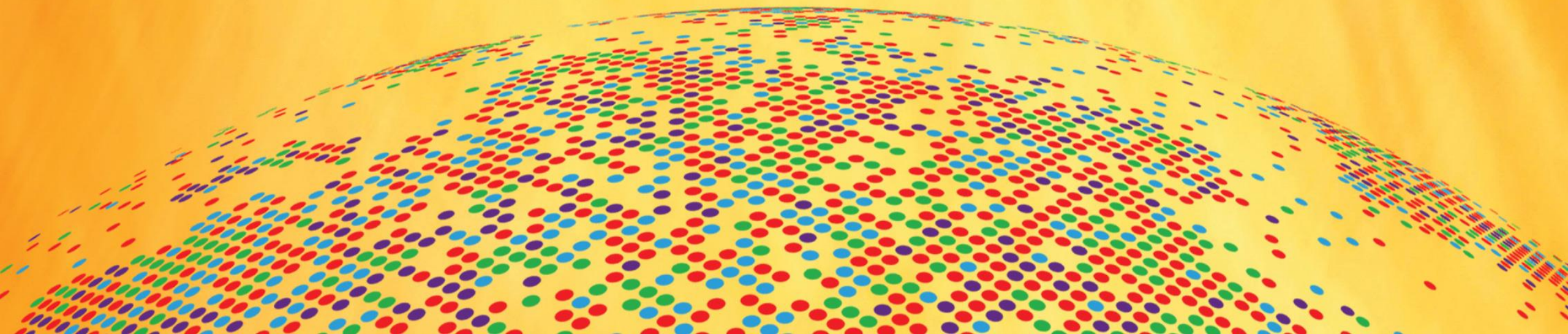
# Human Development Report 2019

**Beyond income, beyond averages, beyond today:**  
Inequalities in human development in the 21<sup>st</sup> century

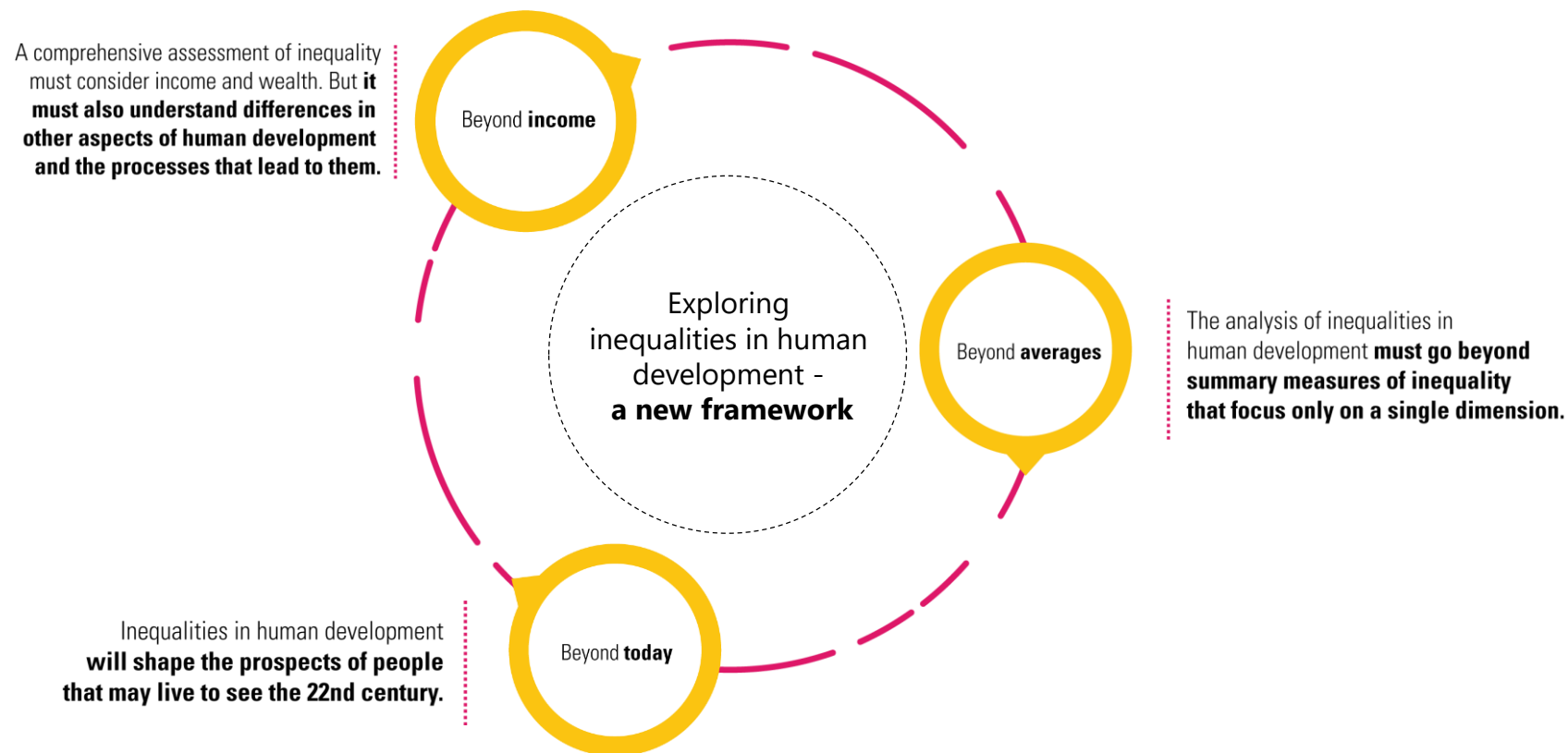


**GLOBAL LAUNCH**

9 December 2019, Bogotá



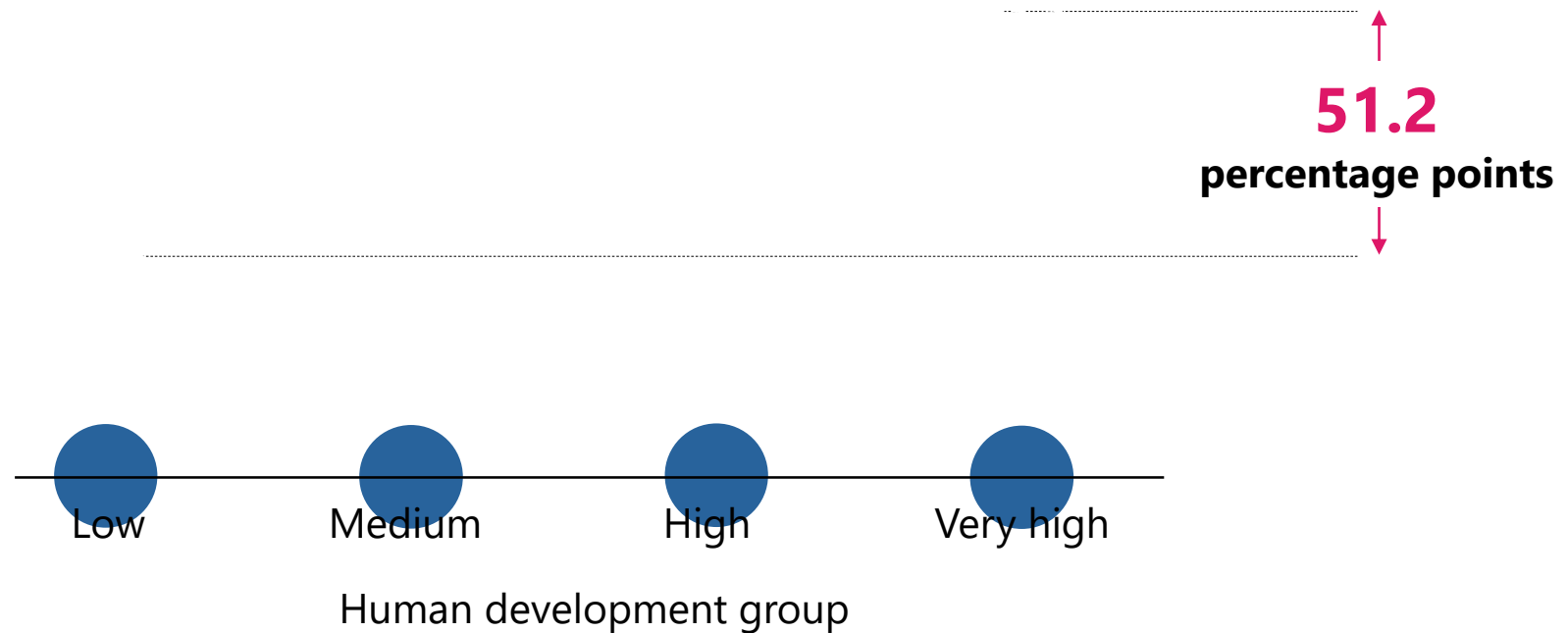
# INEQUALITY IN HUMAN DEVELOPMENT: BEYOND INCOME, AVERAGES AND TODAY



# 1: MANY ARE STEPPING ABOVE MINIMUM FLOORS, BUT WIDESPREAD DISPARITIES REMAIN



Population with a primary education, 2017  
(percent)



## 2: A NEW GENERATION OF INEQUALITIES IN HUMAN DEVELOPMENT IS EMERGING

### Examples of achievements:

- Early childhood survival
- Primary education
- Entry level technology
- Resilience to recurrent shocks

Basic  
capabilities

### Examples of achievements

- Access to quality health at all levels
- High-quality education at all levels
- Effective access to present-day technologies
- Resilience to unknown new shocks

Enhanced  
capabilities

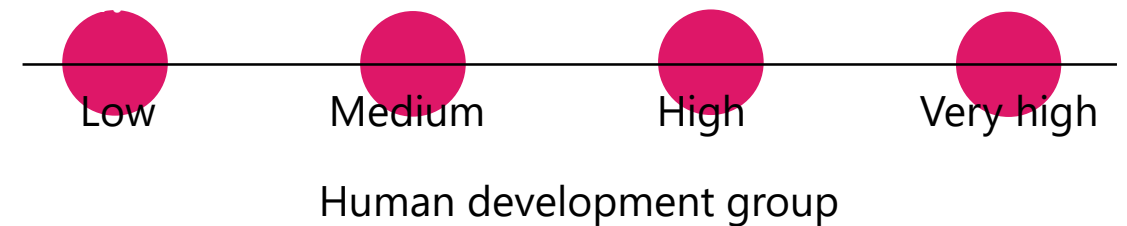
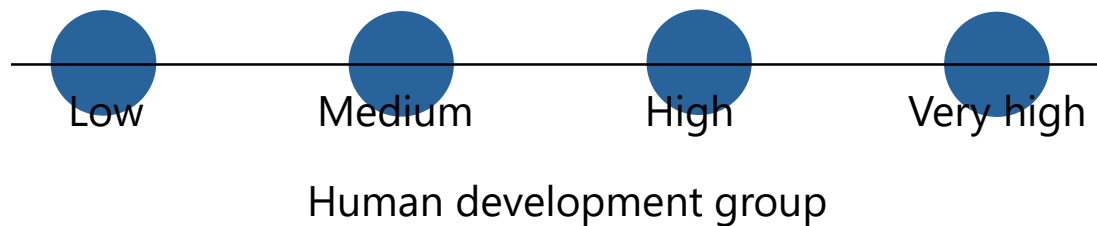
# 2: A NEW GENERATION OF INEQUALITIES IN HUMAN DEVELOPMENT IS EMERGING

## Primary education

Change between 2007-2017 (percentage points)

## Tertiary education

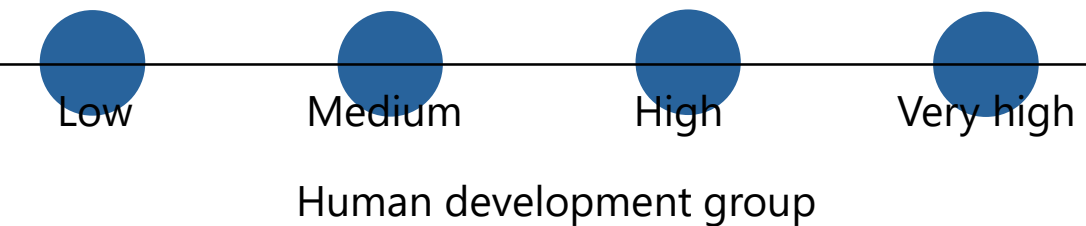
Change between 2007-2017 (percentage points)



# 2: A NEW GENERATION OF INEQUALITIES IN HUMAN DEVELOPMENT IS EMERGING

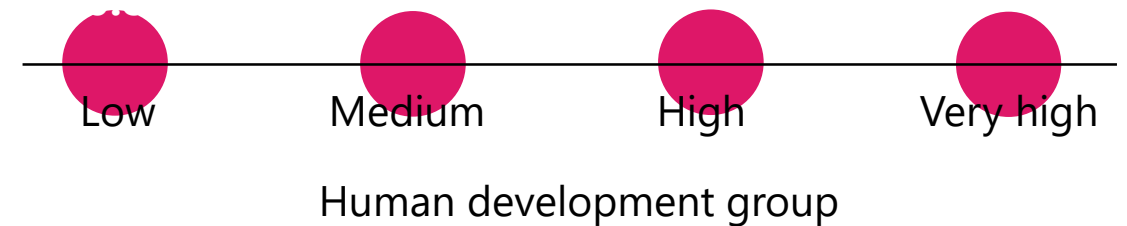
## Mobile-cellular subscriptions

Change between 2007-2017 (per 100 inhabitants)

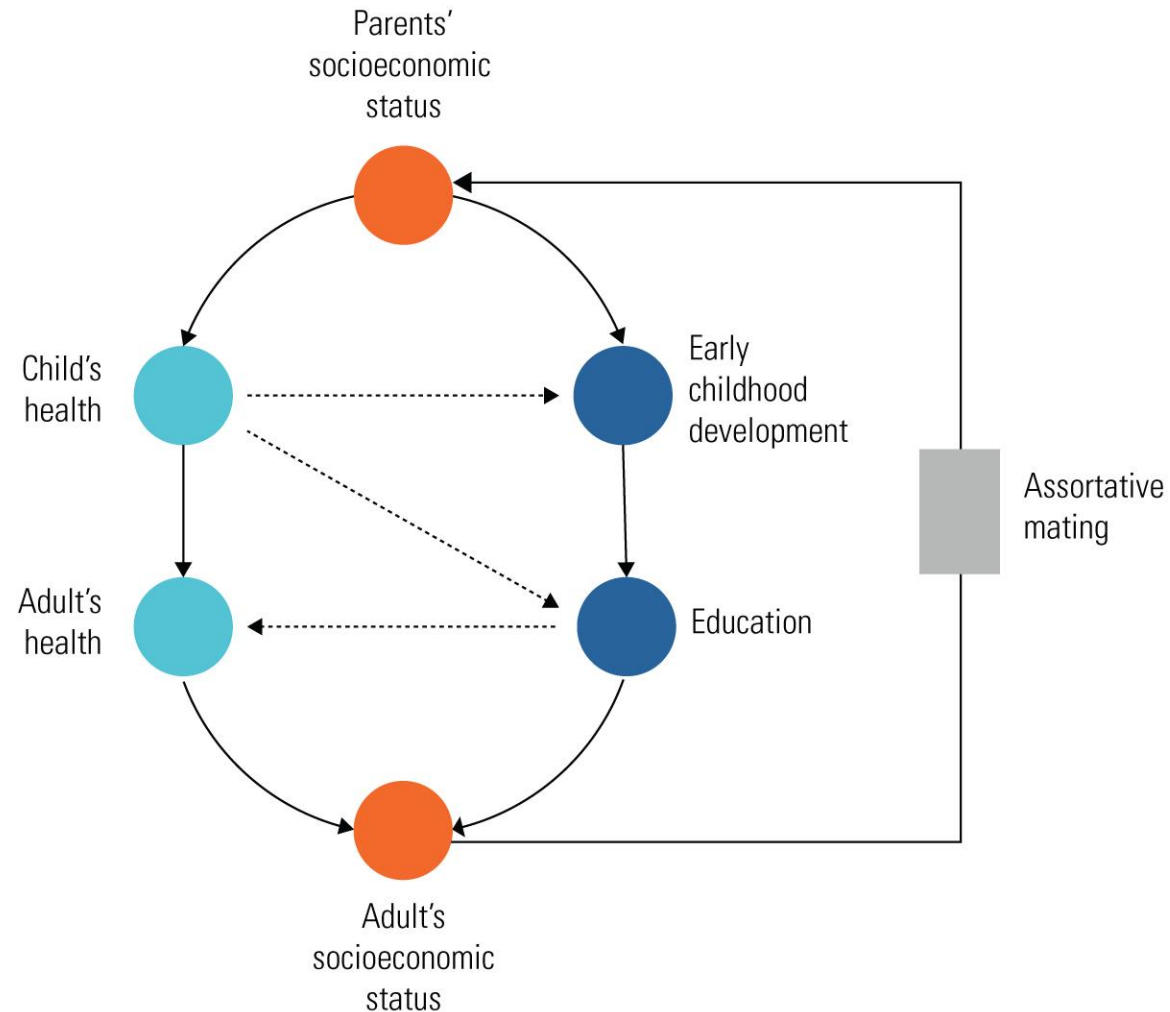


## Fixed broadband

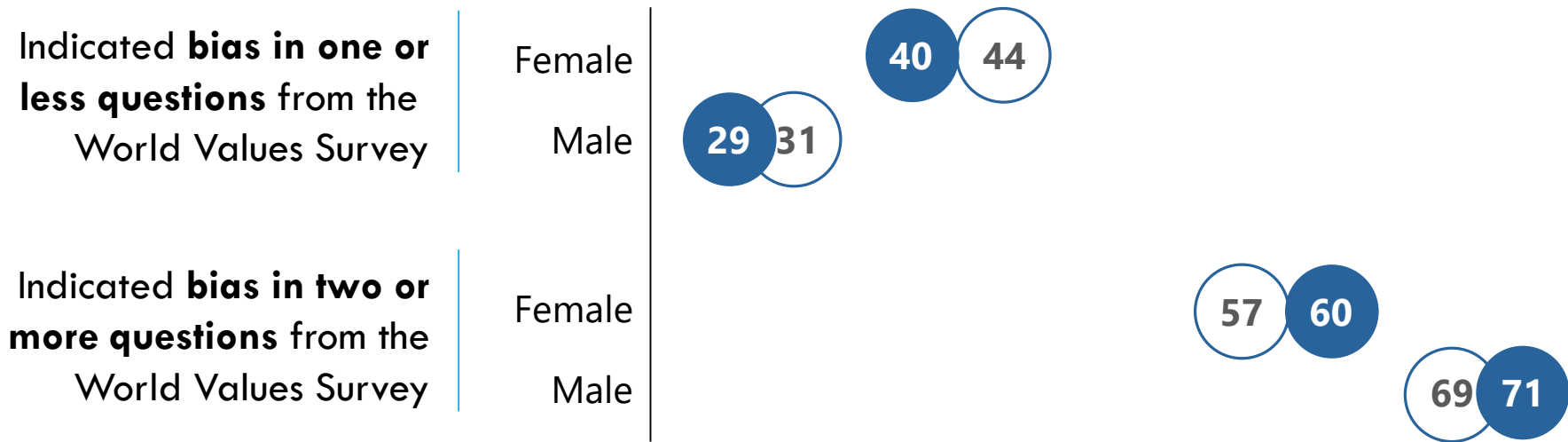
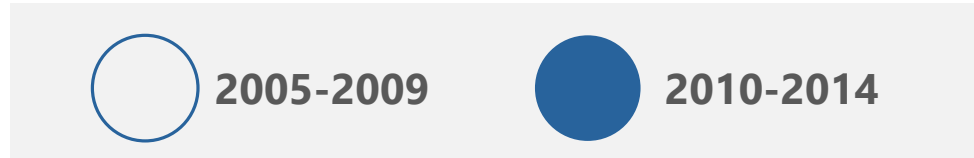
Change between 2007-2017 (per 100 inhabitants)



# 3: INEQUALITIES IN HUMAN DEVELOPMENT CAN ACCUMULATE THROUGH LIFE

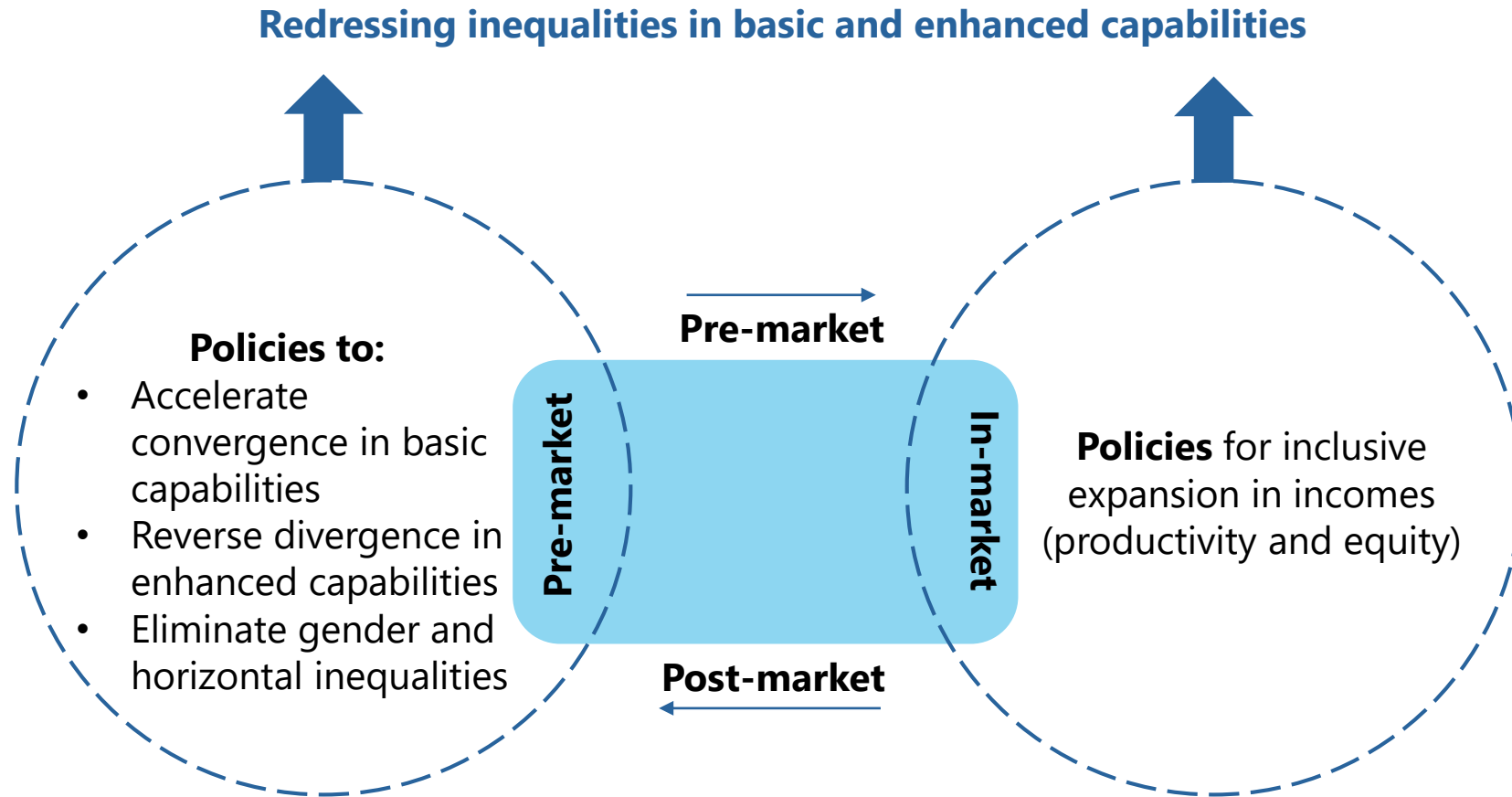


# 4: ASSESSING INEQUALITIES DEMANDS A REVOLUTION IN METRICS





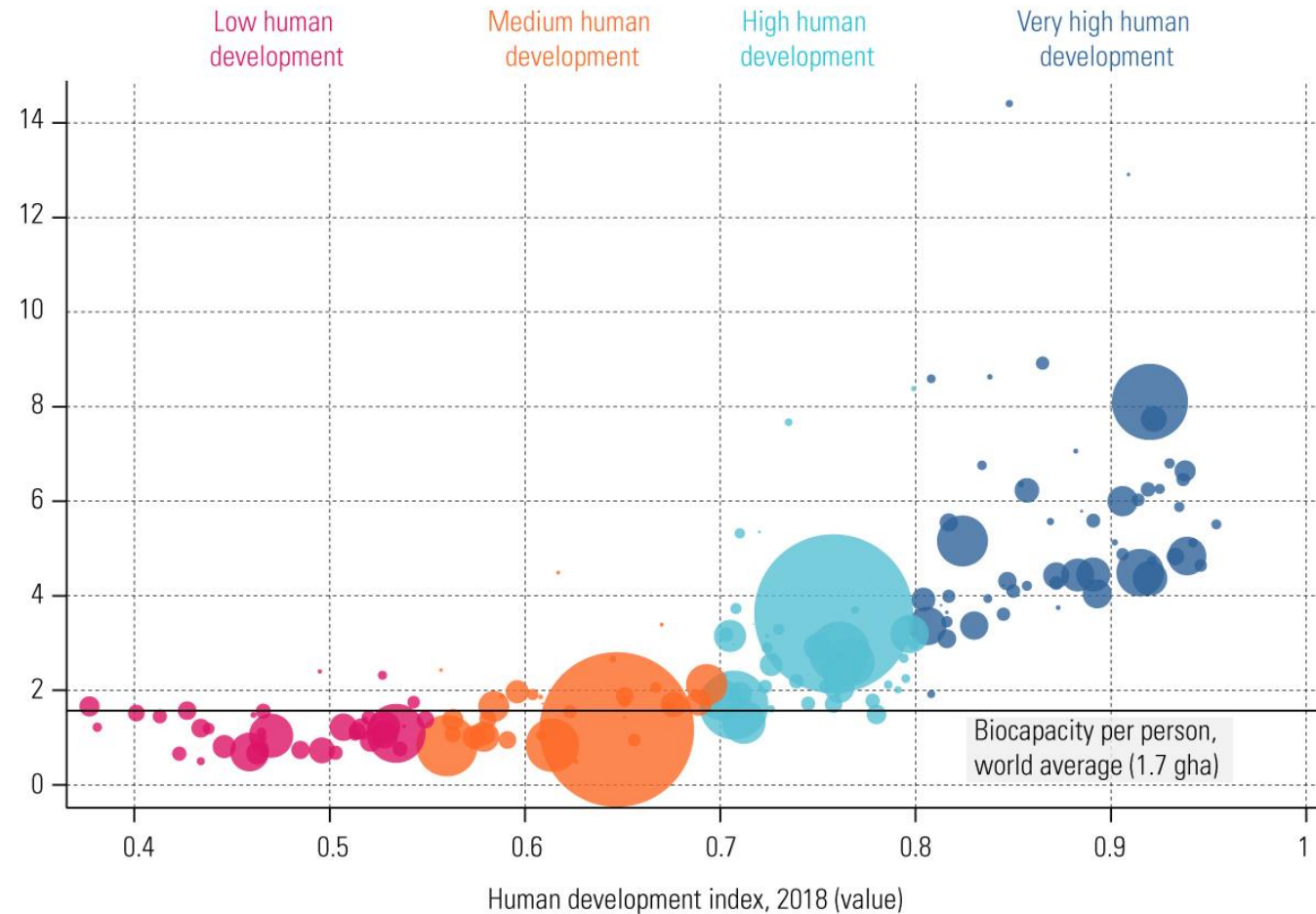
# 5: TACKLING INEQUALITIES IS IN OUR HANDS, BUT WE MUST ACT NOW



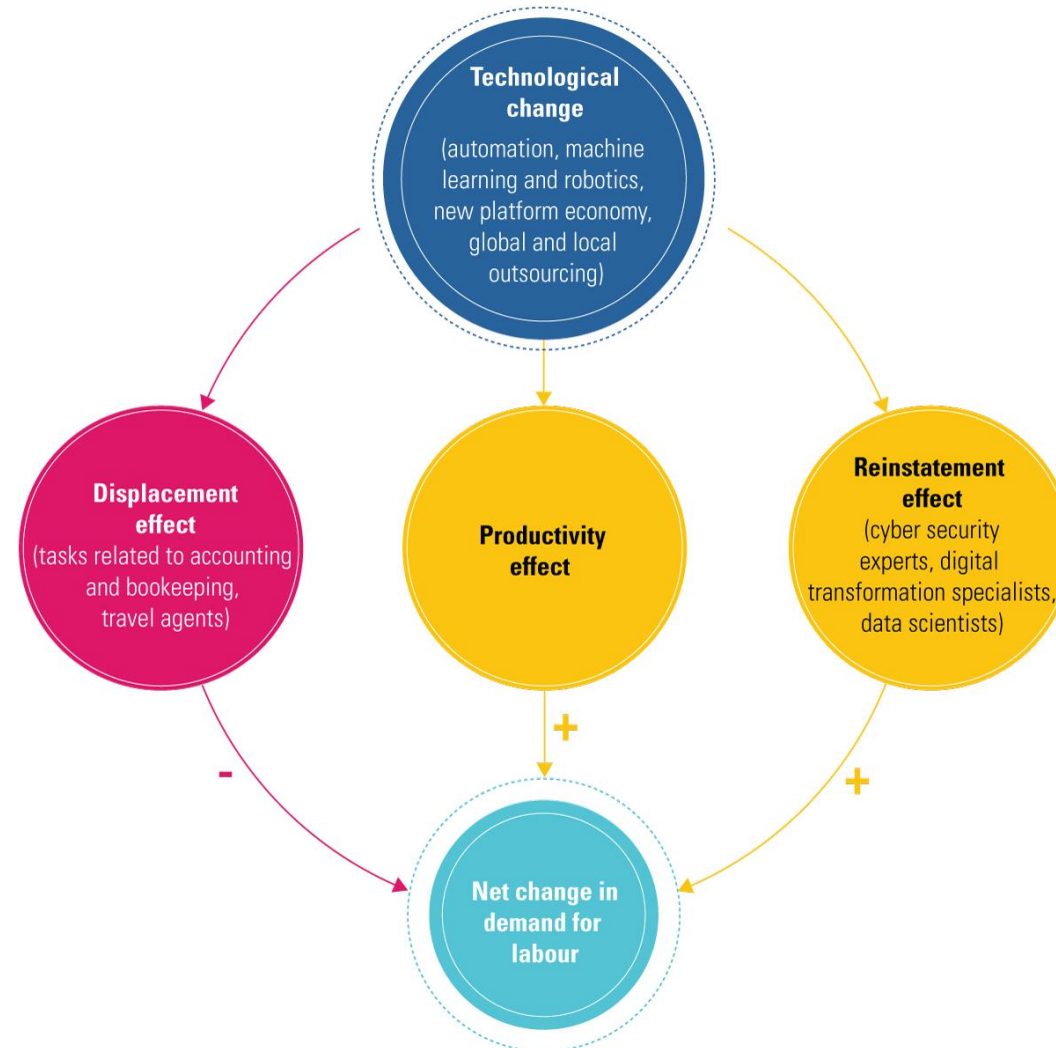
# THE CLIMATE CRISIS



Ecological footprint, 2016  
(global hectare per person)



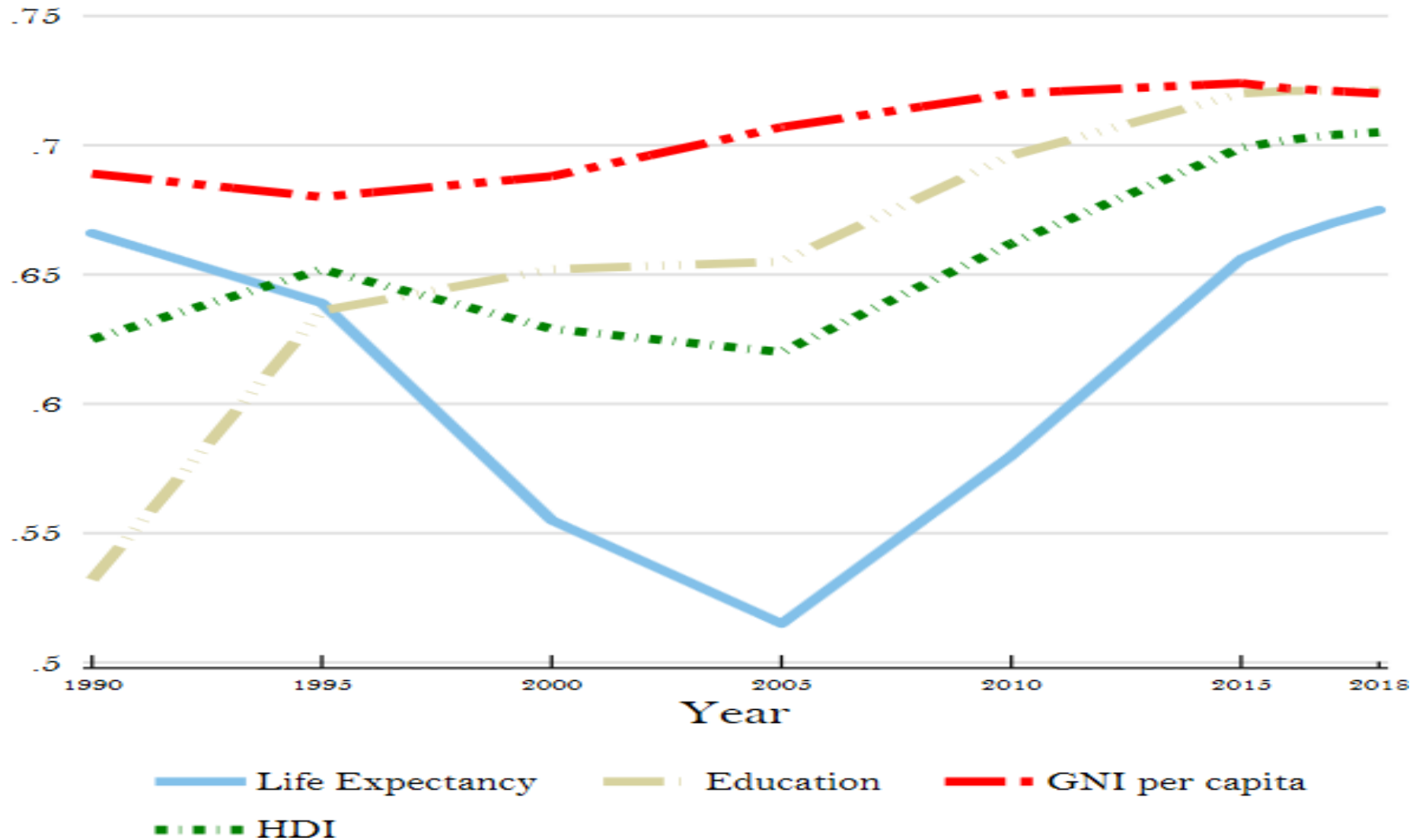
# TECHNOLOGY: GOOD SERVANT, BAD MASTER



# SOUTH AFRICA CONTEXT: TRENDS IN SOUTH AFRICA'S HDI COMPONENT INDICES 1990-2018



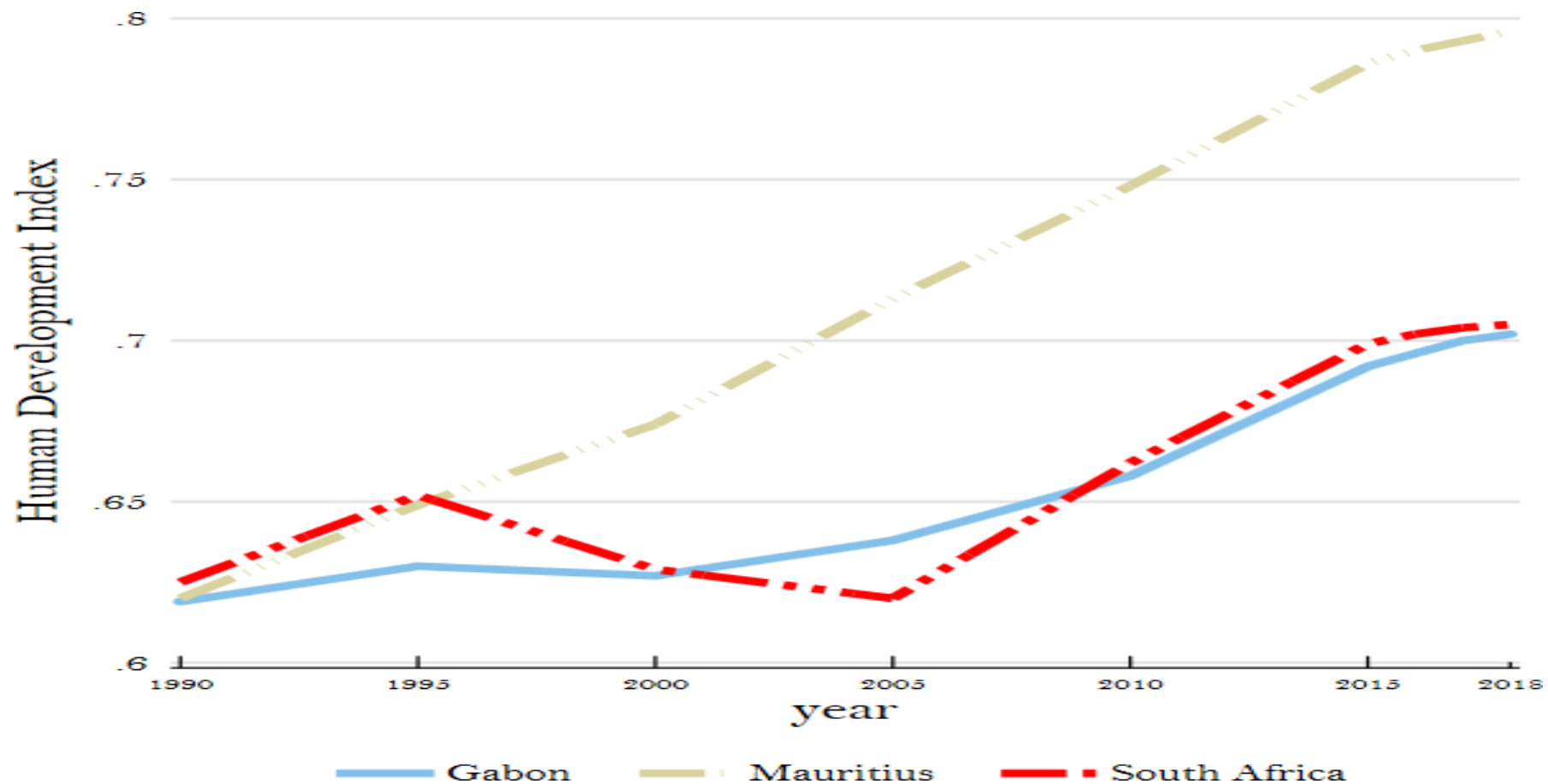
HUMAN  
DEVELOPMENT  
REPORT OFFICE



# HDI TRENDS FOR SOUTH AFRICA, MAURITIUS AND GABON, 1990-2018



HUMAN  
DEVELOPMENT  
REPORT OFFICE



# SOUTH AFRICA'S IHDI FOR 2018 RELATIVE TO SELECTED COUNTRIES AND GROUPS



HUMAN  
DEVELOPMENT  
REPORT OFFICE

	IHDI value	Overall loss (%)	Human inequality coefficient (%)	Inequality in life expectancy at birth (%)	Inequality in education (%)	Inequality in income (%)
South Africa	0.463	34.4	31.4	19.2	17.3	57.7
Congo	0.456	25.0	24.9	22.8	20.9	31.0
Namibia	0.417	35.3	33.6	22.1	25.0	53.6
Sub-Saharan Africa	0.376	30.5	30.4	29.7	34.0	27.6
High HDI	0.615	17.9	17.6	10.0	14.8	27.9

# TRACKING INEQUALITIES – DASHBOARDS

- Classifies countries into three groups
  - i. Bottom third
  - ii. Performing better than bottom third but lower than the top third
  - iii. Top third
  
- analyses performance on indicators in comparison with other countries

# DASHBOARD 1: QUALITY OF HUMAN DEVELOPMENT



HUMAN  
DEVELOPMENT  
REPORT OFFICE

This dashboard contains a selection of 14 indicators associated with: the quality of health, education and standard of living.

The indicators on quality of health are life expectancy, number of physicians, and number of hospital beds.

The indicators on quality of education are pupil-teacher ratio in primary schools, primary school teachers trained to teach, percentage of primary (secondary) schools with access to the internet, and the Programme for International Student Assessment (PISA) scores in mathematics, reading and science.

The indicators on quality of standard of living are the proportion of employed people engaged in vulnerable employment, the proportion of rural population with access to electricity, the proportion of population using improved drinking water sources, and proportion of population using improved sanitation facilities.



# SUMMARY OF SOUTH AFRICA'S PERFORMANCE ON THE QUALITY OF HUMAN DEVELOPMENT INDICATORS RELATIVE TO SELECTED COUNTRIES



HUMAN  
DEVELOPMENT  
REPORT OFFICE

	Quality of health (3 indicators)			Quality of education (7 indicators)			Quality of standard of living (4 indicators)			Overall (14 indicators)			Missing indicators
	Top third	Middle third	Bottom third	Top third	Middle third	Bottom third	Top third	Middle third	Bottom third	Top third	Middle third	Bottom third	
	Number of indicators												
South Africa	0	2	0	0	0	1	1	2	1	1	4	2	7
Congo	0	1	1	0	1	0	0	0	4	0	2	5	7
Namibia	0	1	2	0	1	0	0	1	3	0	3	5	6

# DASHBOARD 2: WOMEN'S EMPOWERMENT



HUMAN  
DEVELOPMENT  
REPORT OFFICE

This dashboard contains a selection of 13 woman-specific empowerment indicators that allows empowerment to be compared across three dimensions – reproductive health and family planning, violence against girls and women, and socioeconomic empowerment.

# SOUTH AFRICA'S PERFORMANCE ON THE WOMEN'S EMPOWERMENT DASHBOARD RELATIVE TO SELECTED COUNTRIES



HUMAN  
DEVELOPMENT  
REPORT OFFICE

	Reproductive health and family planning (4 indicators)			Violence against girls and women (4 indicators)			Socioeconomic empowerment (5 indicators)			Overall (13 indicators)			Missing indicators
	Top third	Middle third	Bottom third	Top third	Middle third	Bottom third	Top third	Middle third	Bottom third	Top third	Middle third	Bottom third	
	Number of indicators												
South Africa	0	4	0	1	1	0	2	3	0	3	8	0	2
Congo	0	3	1	0	1	0	1	0	1	1	4	2	6
Namibia	0	3	1	1	1	0	3	0	2	4	4	3	2

# DASHBOARD 3: ENVIRONMENTAL SUSTAINABILITY



HUMAN  
DEVELOPMENT  
REPORT OFFICE

This dashboard contains a selection of 11 indicators that cover environmental sustainability and environmental threats.

The environmental sustainability indicators present levels of or changes in energy consumption, carbon-dioxide emissions, change in forest area, fresh water withdrawals, and natural resource depletion.

The environmental threats indicators are mortality rates attributed to household and ambient air pollution, and to unsafe water, sanitation and hygiene services, percentage of land that is degraded, and the International Union for Conservation of Nature Red List Index value, which measures change in aggregate extinction risk across groups of species

# SOUTH AFRICA'S PERFORMANCE ON THE ENVIRONMENTAL SUSTAINABILITY DASHBOARD RELATIVE TO SELECTED COUNTRIES



	Environmental sustainability (7 indicators)			Environmental threats (4 indicators)			Overall (11 indicators)			Missing indicators
	Top third	Middle third	Bottom third	Top third	Middle third	Bottom third	Top third	Middle third	Bottom third	
	Number of indicators									
<b>South Africa</b>	0	3	4	0	1	3	0	4	7	0
<b>Congo</b>	4	1	1	1	1	2	5	2	3	1
<b>Namibia</b>	1	4	1	1	1	2	2	5	3	1

# DASHBOARD 5: SOCIOECONOMIC SUSTAINABILITY



HUMAN  
DEVELOPMENT  
REPORT OFFICE

This dashboard contains a selection of 11 indicators that cover economic and social sustainability.

The economic sustainability indicators are adjusted net savings, total debt service, gross capital formation, skilled labour force, diversity of exports, and expenditure on research and development

The social sustainability indicators are old age dependency ratio projected to 2030, the ratio of the sum of education and health expenditure to military expenditure, changes in inequality of HDI distribution, and changes in gender and income inequality

# SOUTH AFRICA'S PERFORMANCE ON THE SOCIOECONOMIC SUSTAINABILITY DASHBOARD RELATIVE TO SELECTED COUNTRIES



HUMAN  
DEVELOPMENT  
REPORT OFFICE

	Economic sustainability (6 indicators)			Social sustainability (5 indicators)			Overall (11 indicators)			Missing indicators
	Top third	Middle third	Bottom third	Top third	Middle third	Bottom third	Top third	Middle third	Bottom third	
	<b>Number of indicators</b>									
<b>South Africa</b>	2	2	2	1	1	3	3	3	5	0
<b>Congo</b>	1	0	3	2	0	3	3	0	6	2
<b>Namibia</b>	0	4	1	2	2	1	2	6	2	1

# WE HAVE A CHOICE




HUMAN  
DEVELOPMENT  
REPORT OFFICE


- For an upper middle income country, South Africa's has a significant number of indicators at the bottom third. ----It is not too late to act: but the time to act is now
- Policy goals must evolve from leaving no behind, to bringing everyone ahead
- Policies must tackle underlying drives not just the symptoms of inequality.
- The 2019 Human Development Report offers analysis and options to help governments consider how best to act
- Need to be conscious and to mitigate against the new drivers of inequality :  
Climate change and Inequalities





**HUMAN  
DEVELOPMENT  
REPORT OFFICE**

 [www.hdr.undp.org](http://www.hdr.undp.org)

 [facebook.com/HumanDevelopmentReport](https://facebook.com/HumanDevelopmentReport)

 [twitter.com/hdrundp](https://twitter.com/hdrundp)