



# **ANA KAINIBAIRE TEKARANGA IBUKIN KATANAN MARIN TAARI**

## **Tekaranga Vision**

*In three years' time, sustainable livelihood in Tekaranga will flow from its ever lushing marine resources that are conserved and protected within its milkfish ponds, marine protected areas and in the lagoon. mataniwiin abana ae e teimatoa itiakina.*

## Contents

1. Background of the management Plan .....	2
2. Statement of Endorsement.....	3
2.1. Tekaranga Village statements of endorsement: .....	3
2.2. Maiana Island Council Statements of endorsement:.....	3
2.3. Ministry for Fisheries and Marine Resources Development statements of endorsement: ...	3
3. Fisheries Management Plan: .....	4
3.1. Application of the Plan .....	4
3.2. Objective of the Plan.....	4
3.3. Sustaining marine resources in Tekaranga village.....	4
3.3.1. 1st Target: Ban destructive activities and fishing methods.....	4
3.3.2. 2 <sup>nd</sup> Target: Protection Species that Spawn.....	4
3.3.3. 3 <sup>rd</sup> Target: Managed Species .....	4
3.3.4. 4 <sup>th</sup> Target: Milkfish pond .....	5
3.3.5. 5 <sup>th</sup> Target: Protected Resource .....	5
3.3.6. 6 <sup>th</sup> Target: Marine protected area: .....	5
3.4. Theme 2: Maintaining the health of Marine Habitats .....	5
3.4.1. 7 <sup>th</sup> Target: Maintaining coastal and marine cleanliness .....	5
4. Implementation .....	5
4.1. Entry into force and Implementation: .....	5
b. Monitoring and Enforcement Strategies:.....	6
c. Management plan review .....	6
Annex 1: Names of members of Tekaranga village .....	7
Annex 2: Schedule 1(as per the Fisheries Regulations 2019) .....	8
Annex 3: Schedule 2 (as per the Fisheries Regulations 2019) .....	9
Annex 4: Map of marine managed areas in Tekaranga .....	10
Annex 5: Coordinates of Marine Managed Areas .....	11

## 1. Background of the management Plan

This management plan was initially developed and endorsed in \*\*\*\* by members of Tekaranga Village for the entire people of Tekaranga. The development of this management plan is a consolidation of ideas and concerns through a series of consultations held prior the finalization and endorsement of the plan. A large number of communities were involved in the preparation of the plan and some of the members are listed in Annex 1.

Tekaranga became an established incorporated coastal community in \*\*\*\* pursuant to the Incorporated Societies Act 2000 and includes among its purposes, the purpose of participation in the conservation, management and protection of marine resources in adjacent coastal areas.

A review and finalization of the management plan was conducted in \*\*\*\*, for the people of Tekaranga Village to make necessary amendments and align with the requirements as per the Fisheries (Conservation and Management of Coastal Marine Resources) Regulations 2019.

This management has the full support of the entire people of Tekaranga Village. (see Section 2 statement of Endorsement)

Maiana Island Council has given support and endorsement for this management plan (see Section 2, statement of endorsement by the Island Council).

A statement of endorsement by the Minister of Fisheries and Marine is provided in Section 2.

This is a duly endorsed plan by the village of Tekaranga, the Island Council of Maiana Island and the Ministry of Fisheries and Marine Resources Development.

## 2. Statement of Endorsement

### 2.1. Tekaranga Village statements of endorsement:

Name: \_\_\_\_\_

Signature: \_\_\_\_\_

Position: \_\_\_\_\_

Date: \_\_\_\_\_

### 2.2. Maiana Island Council Statements of endorsement:

Name: \_\_\_\_\_

Signature: \_\_\_\_\_

Position: \_\_\_\_\_

Date: \_\_\_\_\_

### 2.3. Ministry for Fisheries and Marine Resources Development statements of endorsement:

Name: \_\_\_\_\_

Signature: \_\_\_\_\_

Position: \_\_\_\_\_

Date: \_\_\_\_\_

### 3. Fisheries Management Plan:

#### 3.1. Application of the Plan

Fisheries management measures as written in this fisheries management plan are enforceable Only within Tekaranga Village waters as Mapped on Annex 4 with coordinates on Annex 5.

#### 3.2. Objective of the Plan

The general objective for this plan is to guarantee the revitalization, sustainability and security of Tekaranga's major marine resources through a well-managed fishing and non-fishing practices for the wellbeing of the current and future generations of Tekaranga villagers.

The specific objectives of the plan are as follows:

- a) Restore the health and abundance of important finfishes and marine invertebrates
- b) Maintain a healthy and intact marine ecosystem
- c) Ensure clean coastal and marine environment
- d) Increase awareness and support towards the Fisheries (Conservation and Management of Coastal Marine Resources) Regulations 2019.

#### 3.3. Sustaining marine resources in Tekaranga village

##### 3.3.1. 1st Target: Ban destructive activities and fishing methods.

- a) The use of fishing nets with mesh sizes of under 2.5 inches is prohibited
- b) Te ororo fishing method is banned in all of Tekaranga waters

##### 3.3.2. 2<sup>nd</sup> Target: Protection Species that Spawn

- a) No person shall fish for bonefish (*ikari*) during the spawning times outlined below:
  - (i) Three (3) days before full moon
  - (ii) During full moon
  - (iii) Three (3) days after full moon
- b) No person shall fish for bonefish (*ikari*) during the spawning times outlined below:
  - (i) During full moon
  - (ii) Three (3) days after full moon

##### 3.3.3. 3<sup>rd</sup> Target: Managed Species

- a) No person shall harvest te koikoi (*Asaphis violascens*) with shells sizes less than 2 inch
- b) No Person shall harvest te Koumwara (*Gefrarium pectinatum*) with shell sizes less than 0.5 inch

#### 3.3.4. 4<sup>th</sup> Target: Milkfish pond

- a) No person shall enter the milkfish pond as Mapped on Annex 4 with coordinates on Annex 5 without first approval from Tekaranga Village and Tematantongo Village

#### 3.3.5. 5<sup>th</sup> Target: Protected Resource

- a) Harvesting, collecting and fishing of every species of marine turtle and te bun (*Anadara uropigimelana*) is prohibited.

#### 3.3.6. 6<sup>th</sup> Target: Marine protected area:

- a) No one is to enter, swim, fish or float at areas marked over Naatabu, Ten Teaoi, Ten Teea and Teteirio without first approval from the village of Tekaranga. Refer to a map on Annex 4 and coordinates on Annex 5 for more information

### 3.4. Theme 2: Maintaining the health of Marine Habitats

#### 3.4.1. 7<sup>th</sup> Target: Maintaining coastal and marine cleanliness

- a) Destructing and disrupting any form of coral life is prohibited
- b) Defecation on the beach is prohibited
- c) Littering any sort of biodegradable and non-biodegradable rubbish or waste on the beach, shoreline and mangrove areas is banned

## 4. Implementation

#### 4.1. Entry into force and Implementation:

- a) This management plan will come into force once signed off by the Minister for Fisheries and Marine Resources Development.
- b) Te Komete n Tararua, village wardens, special constables and the fisheries assistant are responsible in driving the implementation and monitoring of this management plan
- c) Every member of Te Komete n tararua will be nominated by Te Bouanikaua
- d) Role of the Te Komete n Tararua:
  - (i) Conduct monitoring and inspection
  - (ii) Monitor coastline for littering
  - (iii) Receive reports of breaching cases from the villagers
  - (iv) Report breaches to the Tekaranga Maungatabu for judgements
  - (v) Keeping a record of fines imposed, the number of breaching cases and the number of fines issued.
- e) Role of Tekaranga maungatabu



Teuabu Maungatabu is a name given to a village meeting that is attended by every household member (*bukinibwai*) of the village.

- i. In this plan, Teuabu maungatabu will be the primary judge for every breach to the plan.
- ii. For every breach of the plan, Teuabu maungatabu will decide whether the culprits will be penalized under the mwaneaba or they will be taken to court.

**b. Monitoring and Enforcement Strategies:**

- i. Monitoring of the management plan will be carried out by every member of the village but will be led by Te Komete n Tararua
- ii. It is a responsibility of every villager in Tekaranga to report any noticeable breaches to Te Komete n Tararua
- iii. Te Komete n Tararua will record and collect more information on these breaches before reporting to te Bowi ni Kawa meeting for further actions on imposing penalties.
- iv. Reports will be made on the progress of enforcement and monitoring by te Komete n Tararua during the monthly meetings of te Tekaranga Maungatabu
- v. Tekaranga Maungatabu will decide penalties for offenders whether to take it to court or decide the penalty under the mwaneaba.

**c. Management plan review**

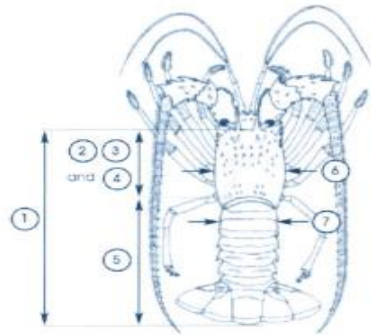
- a) The plan shall be revised every year or when the Minister considers necessary, upon the advice of the Director and of the community involved. Any amendments to the plan shall be endorsed by the community involved and approved by the Minister in writing.

## Annex 1: Names of members of Tekaranga village

*Beneata Tiare*  
*Aaro Tengkam*  
*Tebaerae Tengata*  
*Maraea Tentao*  
*Tiriam Mikaere*  
*Teatunrenga Temwatie*  
*Mwargarita Teatia*  
*Teniraki Uere*  
*Mokoa Tuen*  
*Tiie Arobwati*  
*Teebora Takoto*  
*Tebutia Beeni*  
*Kamoirere Raieta*  
*Bakoa Taam*  
*Uere Aatera*  
*Tebwatau Teitikai*  
*Merimeri Arebonto*  
*Eetera Itikara*  
*Kabenta Karotu*  
*Bwenawa Nation*  
*Tiroua Binataake*  
*Ngauea Batiara*  
*Aatera Iaabo*  
*Tebutia Arebonto*  
*Teangoa Arebonto*



## Annex 2: Schedule 1(as per the Fisheries Regulations 2019)



1. from the front edge of the carapace to the rear edge of the telson
2. carapace length
3. from the midline behind the rostral horns to the rear edge of the carapace
4. from the base of the supra orbital spines to the end of the oedophaeothorax
5. tail length
6. carapace width
7. tail width between the lateral notches of the first tail segment

Fig. 1 Rock Lobster carapace length

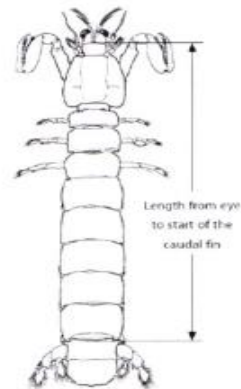


Fig. 2 Mantis shrimp

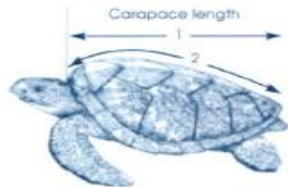


Fig. 3 Turtle carapace length

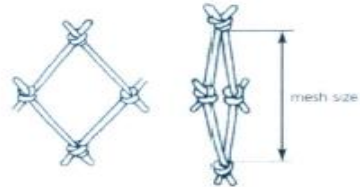
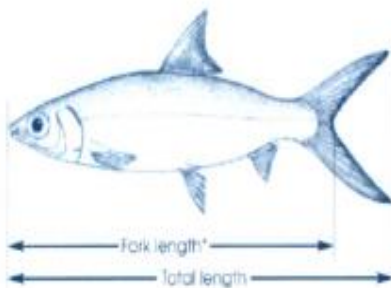


Fig. 4 Stretched mesh size



\* or, measure taken at the middle of the tail

Fig. 5 Finfish fork and total length

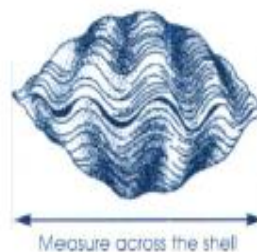
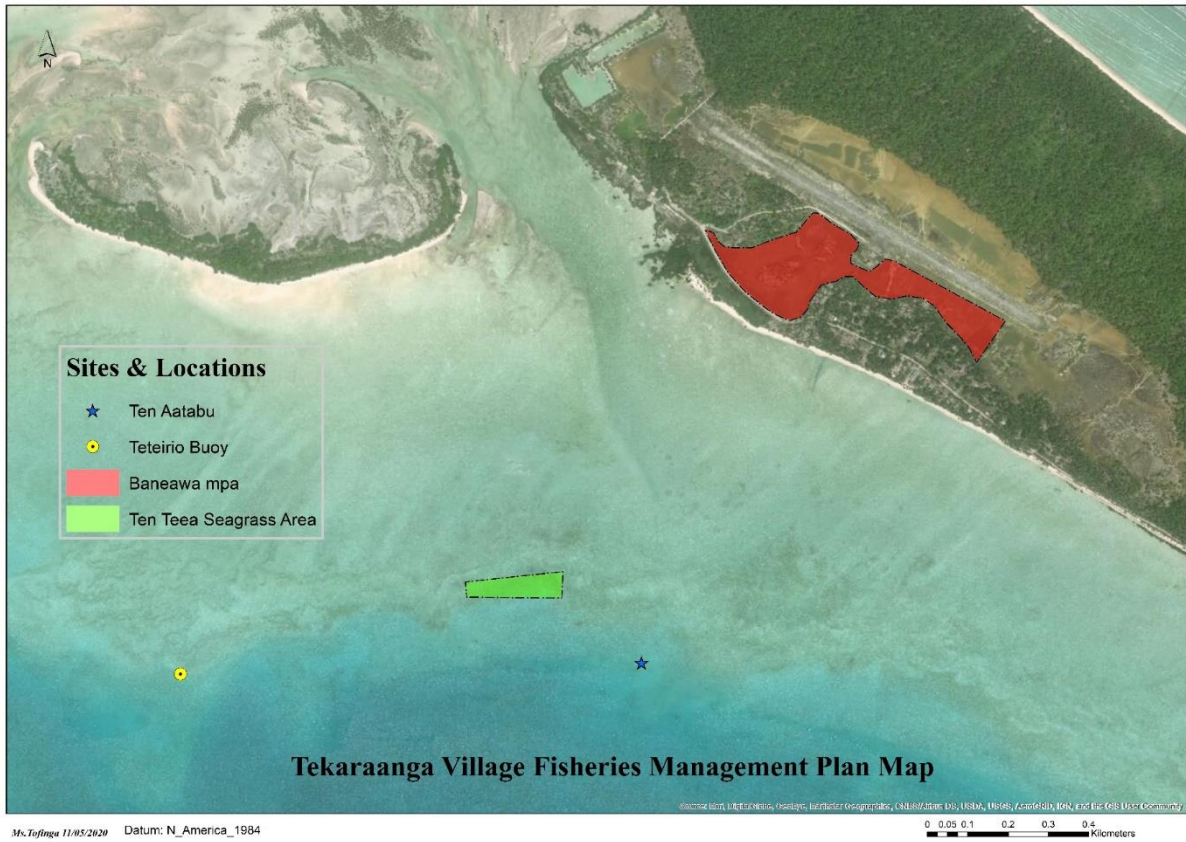


Fig. 6 Bivalve total length

### Annex 3: Schedule 2 (as per the Fisheries Regulations 2019)

Goatfish ( <i>Upeneus taeniopterus</i> )	Maebo	Minimum fork length 20 cm	Three (3) days before and three (3) days after new moon
Exocoetidae (flying fish)			
Flying fish ( <i>Cypselurus suttoni</i> )	Onauti	Minimum fork length 20 cm	Three (3) days before and three (3) days after new moon
<b>2. INVERTEBRATES</b>			
Bivalves (ark, clams)			
Ark shell <i>Anadara sp.</i>	Te bun	Minimum size 4 cm	Director to declare closed season and areas.
Clam ( <i>Tridacna maxima</i> )	Were	Minimum size 15 cm	Director to declare closed season and areas.
Clam ( <i>Tridacna squamosa</i> )	Were	Minimum size 20 cm	Director to declare closed season and areas.
Giant clam ( <i>Tridacna gigas</i> )	Kima	Total ban	Special protection warranted
Crustaceans			
Rock lobster ( <i>Panulirus sp.</i> )	Nnewe	Minimum carapace length 8.5cm from front edge of carapace to rear edge of carapace	Director to declare closed season
Mantis shrimp <i>Lysiosquilla maculate</i>	Waro	Minimum size 18cm measured from eye to start of caudal fin	Director to declare closed season
<b>3. SEA TURTLES</b>			
Green Turtle ( <i>Chelonia mydas</i> )	Te On	Minimum carapace length 86cm	Director to declare closed season
Hawksbill Turtle ( <i>Eretmochelys imbricate</i> ) (not fit for consumption)	On-tabwakea	Minimum carapace length 68cm	Director to declare closed season

## Annex 4: Map of marine managed areas in Tekaranga



## Annex 5: Coordinates of Marine Managed Areas

### Coordinates set 1

1.00388	173.02722	✓	<b>1</b>
1.00382	173.02740	✓	<b>2</b>
1.00362	173.02751	✓	<b>3</b>
1.00350	173.02765	✓	<b>4</b>
1.00348	173.02789	✓	<b>5</b>
1.00348	173.02825	✓	<b>6</b>
1.00366	173.02872	✓	<b>7</b>
1.00377	173.02905	✓	<b>8</b>
1.00383	173.02926	✓	<b>9</b>
1.00407	173.02945	✓	<b>10</b>
1.00426	173.02962	✓	<b>11</b>
1.00425	173.02974	✓	<b>12</b>
1.00415	173.02988	✓	<b>13</b>
1.00402	173.03005	✓	<b>14</b>
1.00378	173.03047	✓	<b>15</b>
1.00357	173.03065	✓	<b>16</b>
1.00344	173.03060	✓	<b>17</b>
1.00332	173.03047	✓	<b>18</b>
1.00314	173.03046	✓	<b>19</b>
1.00305	173.03064	✓	<b>20</b>
1.00295	173.03087	✓	<b>21</b>
1.00306	173.03104	✓	<b>22</b>
1.00323	173.03124	✓	<b>23</b>
1.00319	173.03143	✓	<b>24</b>

### Coordinate set 2

1.00185	173.03391	✓	<b>25</b>
1.00093	173.03327	✓	<b>26</b>
1.00127	173.03309	✓	<b>27</b>
1.00152	173.03288	✓	<b>28</b>
1.00182	173.03258	✓	<b>29</b>
1.00218	173.03233	✓	<b>30</b>
1.00236	173.03207	✓	<b>31</b>
1.00241	173.03172	✓	<b>32</b>
1.00234	173.03135	✓	<b>33</b>
1.00240	173.03101	✓	<b>34</b>
1.00267	173.03069	✓	<b>35</b>
1.00284	173.03052	✓	<b>36</b>
1.00284	173.03031	✓	<b>37</b>
1.00274	173.03014	✓	<b>38</b>
1.00265	173.02980	✓	<b>39</b>
1.00229	173.02955	✓	<b>40</b>
1.00210	173.02949	✓	<b>41</b>
1.00194	173.02935	✓	<b>42</b>
1.00186	173.02910	✓	<b>43</b>
1.00197	173.02884	✓	<b>44</b>
1.00211	173.02860	✓	<b>45</b>
1.00249	173.02812	✓	<b>46</b>
1.00292	173.02773	✓	<b>47</b>
1.00346	173.02742	✓	<b>48</b>
1.00388	173.02722	✓	<b>49</b>

