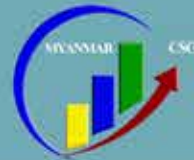




THE WORLD BANK



CENTRAL STATISTICAL ORGANIZATION



Empowered lives.
Resilient nations.

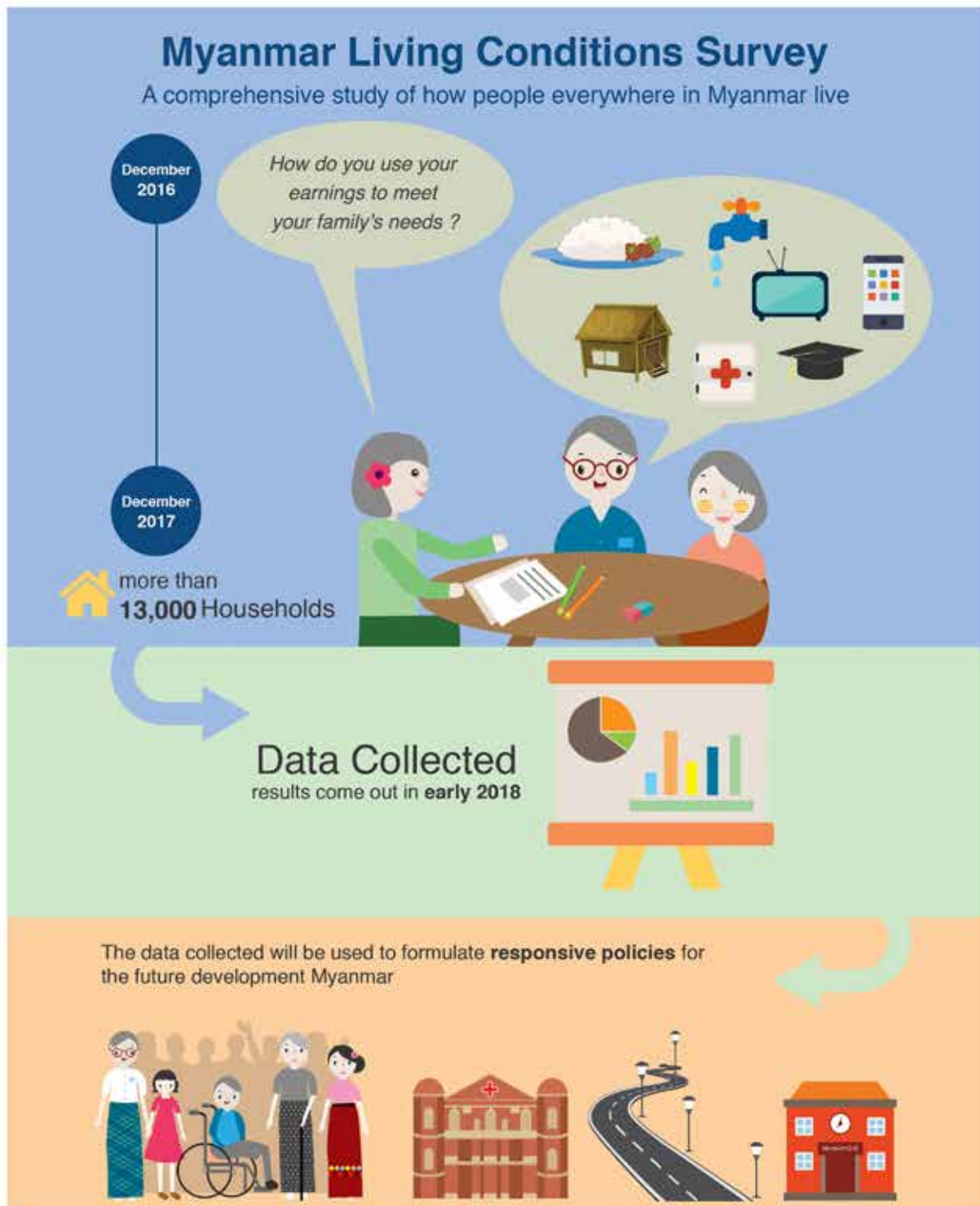


MYANMAR LIVING CONDITIONS SURVEY 2016/17

Factsheet

“Listening to the people of Myanmar to improve their lives”

The Myanmar Living Conditions Survey is a comprehensive study of how people everywhere in Myanmar live. It collects data on the occupations of people, how much income they earn, and how they use this to meet the food, housing, health, education and other needs of their families. The data collected will be used to formulate responsive policies for the future development of the country.



FAQs

What are the objectives of the Myanmar Living Conditions Survey?

The Myanmar Living Conditions Survey is conducted with the following objectives:

- Provide updated estimates of poverty and living conditions at the state/region level, to inform national data needs and selected SDG targets,
- Construct consumption weights for the national CPI basket, and
- Estimate private consumption expenditure for the System of National Accounts.

Where is the survey taking place?

The Myanmar Living Conditions Survey is representative of the entire country and is taking place in all districts and almost all townships of Myanmar. More than 13,000 households in all States and Regions of Myanmar participate in the survey.

Who is conducting the survey?

The Myanmar Living Conditions Survey is being conducted by the Central Statistical Organization with technical support from the United Nations Development Programme and the World Bank. Specially trained interviewing teams are dispatched across Myanmar to conduct the survey.

When did the survey start and when will it end?

The survey is conducted continuously over a 12-month period. Fieldwork started in December 2016 and will end in December 2017.

How will the results of the survey be used?

The results of the survey will become available in early 2018 and can be used by authorities and communities to formulate policies and programmes that meet the needs of all the people of Myanmar. The data will also be used by researchers to better analyze the living conditions in Myanmar, and by civil society organizations to advocate for the needs of vulnerable groups of Myanmar's population.

Is this the first time such a survey is taking place in Myanmar?

Various household surveys have been conducted in the past in Myanmar, in particular the Integrated Household Living Conditions Assessment (2005 and 2010), the Household Income and Expenditure Survey (between 1989 and 2012) and the Myanmar Poverty and Living Conditions Survey (2015).

The Myanmar Living Conditions Survey brings all these previous household surveys together into a single survey, and improves upon them through a more robust design and methodology.

How can we get more information about the survey?

Information about the survey can be found online on the websites of the Central Statistical Organization, UNDP and the World Bank. Specific questions can be directed via email to dgcsmopf@gmail.com.

Central Statistical Organization

Office 32

Nay Pyi Taw

Myanmar

<http://www.csostat.gov.mm>

United Nations Development Programme Myanmar

6 Natmawk Road, Tamwe Township

Yangon

Myanmar

<http://www.mm.undp.org>

World Bank

57, Pyay Road, Hlaing Township

Yangon

Myanmar

<http://www.worldbank.org/en/country/myanmar>