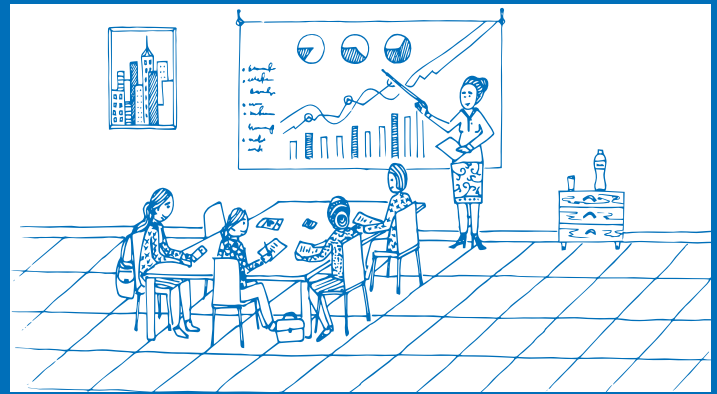




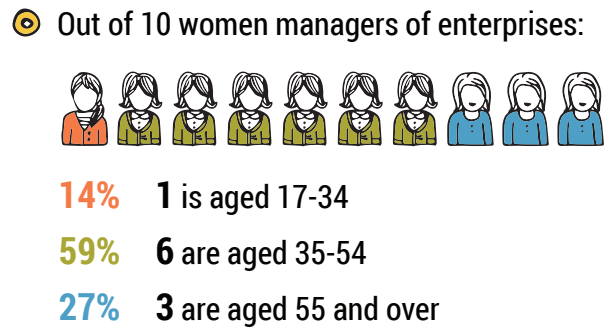
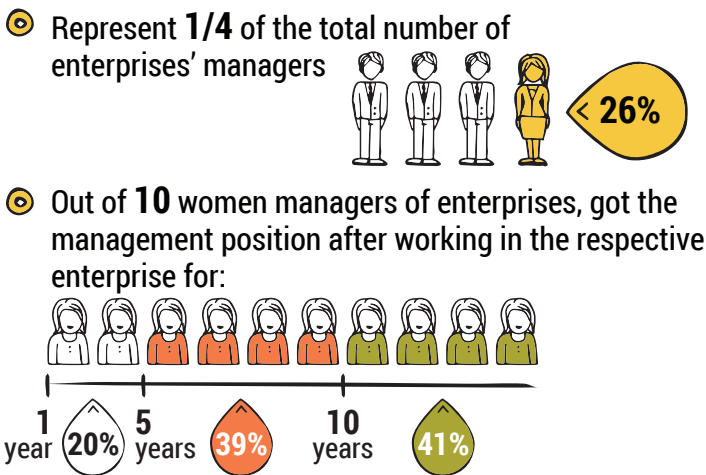
# Profile of Women in Business



## Demographic characteristics of women in business

Note: heads of economic and social units, employers and own-account workers are subjects of entrepreneurial activity

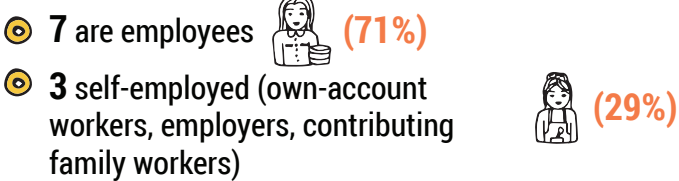
### Women managers of enterprises



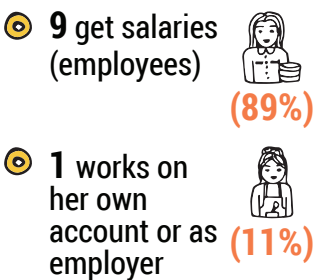
Source: NBS, Annual Survey on wages and number of employees, 2013

### Women with entrepreneurial potential

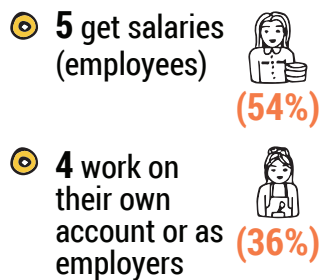
Out of 10 employed women:



In towns:



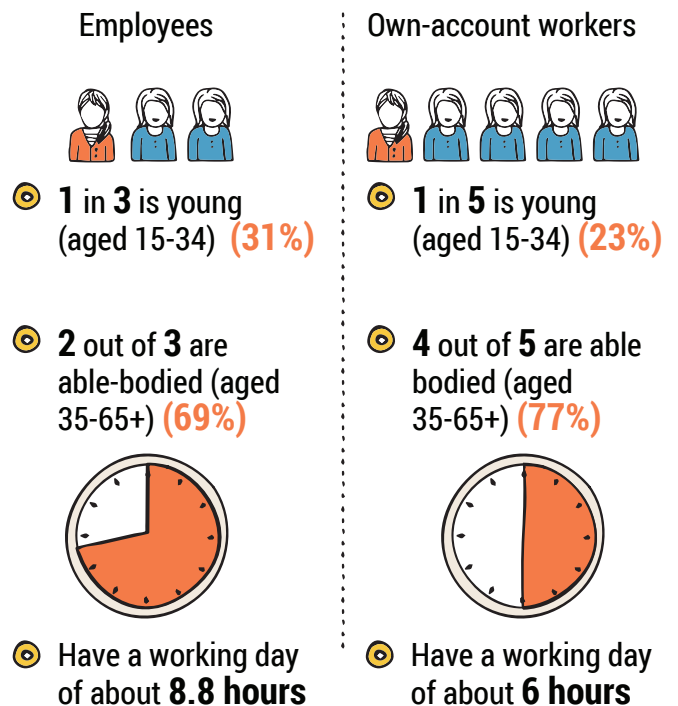
In villages:



Out of total self-employed women:



Out of employed women:



Source: NBS, Labour Force Survey, 2015

## Education level of women in business

Note: heads of economic and social units, employers and own-account workers are subjects of entrepreneurial activity

### Out of 10 women managers of enterprises:

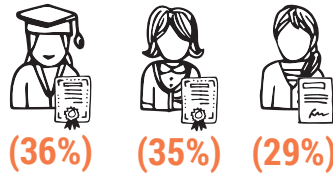
- 8 have higher education (83%)
- 1 has secondary specialized or vocational education (14%)



### Out of employed women with entrepreneurial potential:

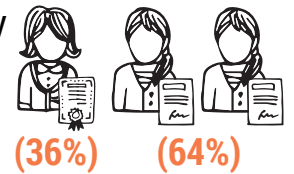
#### Employees

- 1 in 3 has higher education
- 1 in 3 has secondary specialized or vocational education
- 1 in 3 has general secondary and lower education



#### Own-account workers

- 1 in 3 has higher, secondary professional or vocational education
- 2 out of 3 have general secondary or lower education



Source: NBS, Annual Survey on salaries and number of employees, 2013

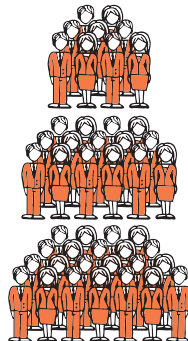
## Activity areas of women in business

Note: heads of economic and social units, employers and own-account workers are subjects of entrepreneurial activity

### Women managers of enterprises

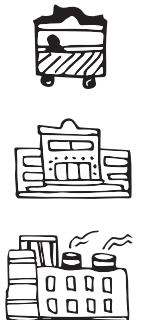
#### By size of managed enterprises, women account for:

- 1 in 3 managers of enterprises with up to 9 employees (31%)
- 1 in 4 managers of enterprises with 10-49 employees (24%)
- 1 in 5 managers of enterprises with 50-100+ employees (18%)



#### By legal form of the managed enterprises, women account for:

- 1 in 3 heads of cooperatives (30%)
- 1 in 4 heads of commercial units (24%)
- 1 in 6 heads of state and municipal enterprises (15%)



### Out of 10 women managers of enterprises:

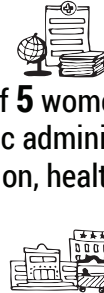
- 2 manage trade units, hotels and restaurants (19%)
- 2 have management positions in public administration, education, health (17%)
- 2 manage enterprises in industry and agriculture (21%)
- 4 manage enterprises from other economic activities (43%)



### Out of employed women with entrepreneurial potential:

#### Employees

- 2 out of 5 women work in public administration, education, health, etc. (39%)
- and 2 work in trade and service, and industry (37%)



#### Own-account workers

- 8 out of 10 women work in agriculture and forestry (80%)
- and 2 work in trade, hotels and restaurants activities (13%)

