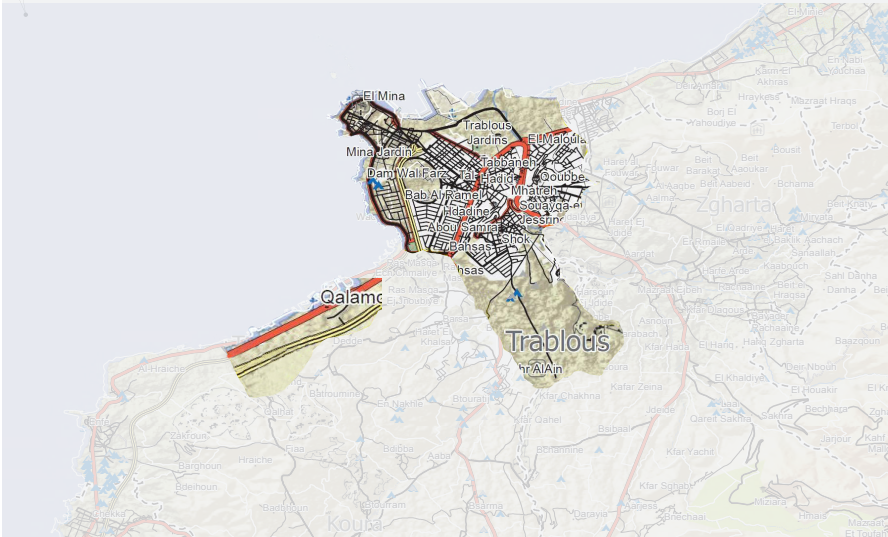


GEOGRAPHIC DATA

The Urban Community Al-Fayhaa map¹

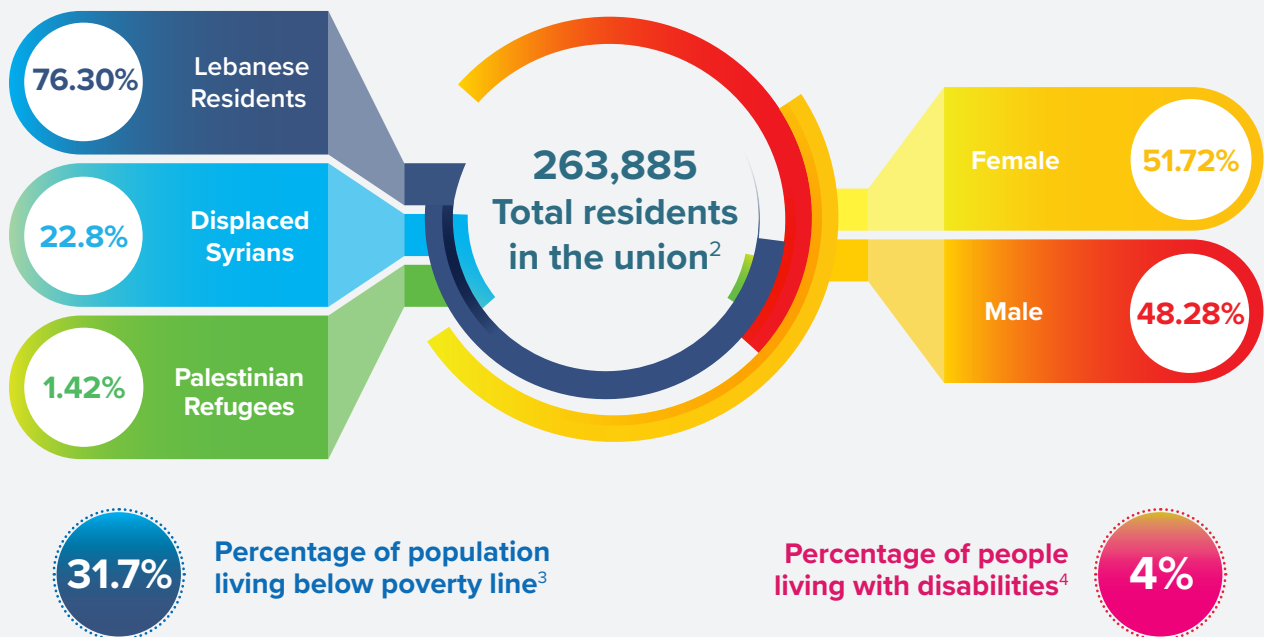


District
Tripoli

3
Municipalities
in the district

4
Municipalities
in the union

DEMOGRAPHIC DATA



¹ United Nations Office for Coordination of Humanitarian Affairs (OCHA) <https://www.unocha.org/media-centre/maps-infographics>

² 2020 LCRP Population Package and PHC Master list: Lebanon Information Hub <https://data2.unhcr.org/en/situations/syria/location/71>

³ and ⁴ Urban Community Al-Fayhaa

COMMUNITY INFRASTRUCTURE



Services available in the community⁵
**Tripoli Port | Transport |
 Power/Water supply | Markets |
 Agriculture | Health | Education |
 Banking | Archeological sites**



Natural resources⁶
Water

ECONOMIC DATA



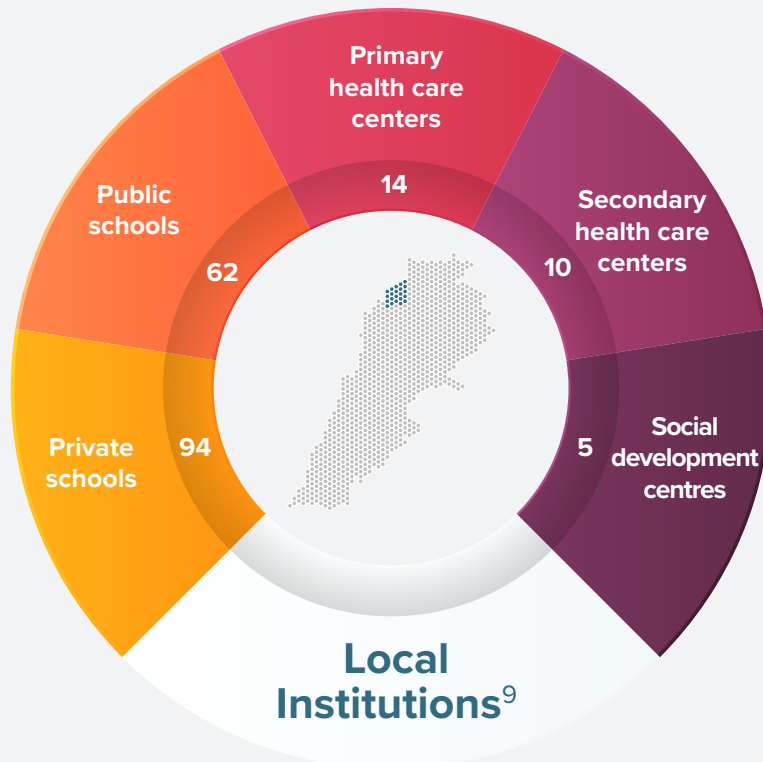
Dominant business sector:⁷

- . Furniture Firms Household
- . Soap Production
- . Paper and Paper Products Industry and Printing firm
- . Foods and Beverage
- . Wood and Carpentry Firms
- . Glass and Porcelain Firms



Income average per Lebanese residents' household:⁸

- Less than 650,000 LBP **19.6%**
- 650-1200 **27.1%**
- 1200-2400 **31.1%**
- 2400-5000 **16.3%**
- 5000+ **5.1%**



5, 6, 7 and 9 Urban Community Al-Fayhaa

8 Labor Force and Household Living Conditions Survey 2018-2019, Central Administration of Statistics Lebanon

9 2020 LCRP Population Package and PHC Master list: Lebanon Information Hub <https://data2.unhcr.org/en/situations/syria/location/71>