

## GEOGRAPHIC DATA

The Union of Tyre Municipalities map<sup>1</sup>

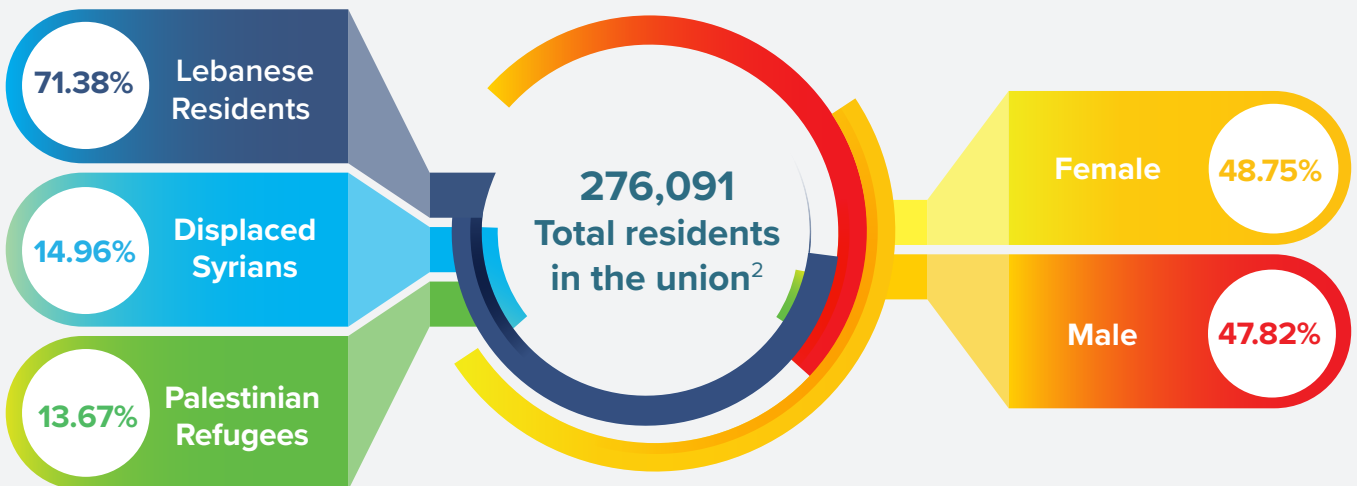


**District**  
Tyre

**62**  
Municipalities  
in the district

**55**  
Municipalities  
in the union

## DEMOGRAPHIC DATA



<sup>1</sup> United Nations Office for Coordination of Humanitarian Affairs (OCHA) <https://www.unocha.org/media-centre/maps-infographics>  
<sup>2</sup> 2020 LCRP Population Package and PHC Master list: Lebanon Information Hub <https://data2.unhcr.org/en/situations/syria/location/71>

# COMMUNITY INFRASTRUCTURE

Services available in the community<sup>3</sup>



**Transport | Power/Water supply |  
Markets | Agriculture | Health |  
Education | Banking | Hotels |  
Restaurants | Archeological sites**

Natural resources<sup>4</sup>



**- Rich water sources  
- A wealth of green spaces  
- A pristine coast**

## ECONOMIC DATA



**Local private institutions:**<sup>5</sup>

Approximately 9,000

**Dominant business sector:**<sup>6</sup>

Tourism, agriculture and trade

**Income average per Lebanese residents' household:**<sup>7</sup>

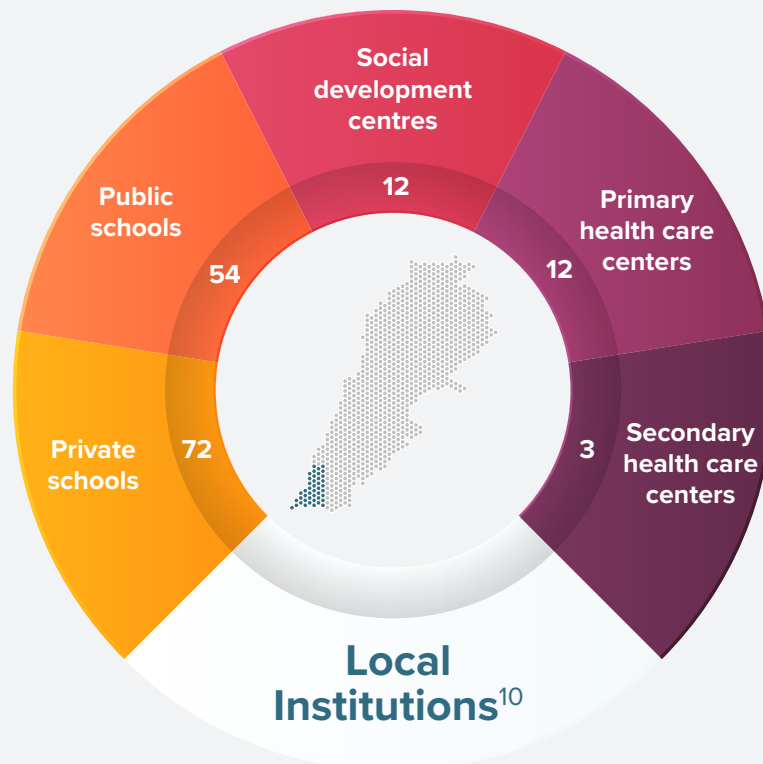
Less than 650,000 LBP **26.6%**  
650-1200 **34.8%**  
1200-2400 **26.2%**  
2400-5000 **10.6%**  
5000+ **1.5%**

**Income average per Syrian Refugees household:**<sup>8</sup>

82,500 LBP

**Unemployment rate:**<sup>9</sup>

**10%**



3 and 4 Union of Tyre Municipalities

7 Labor Force and Household Living Conditions Survey 2018-2019, Central Administration of Statistics Lebanon

5, 6, 8, 9 and 10 2020 LCRP Population Package and PHC Master list: Lebanon Information Hub <https://data2.unhcr.org/en/situations/syria/>