



Republic of Lebanon
Ministry of Social Affairs



*Empowered lives.
Resilient nations.*

LHSP

Lebanon Host Communities Support Programme

| 2017 Annual Report Summary





LHSP

Lebanon Host Communities Support Programme

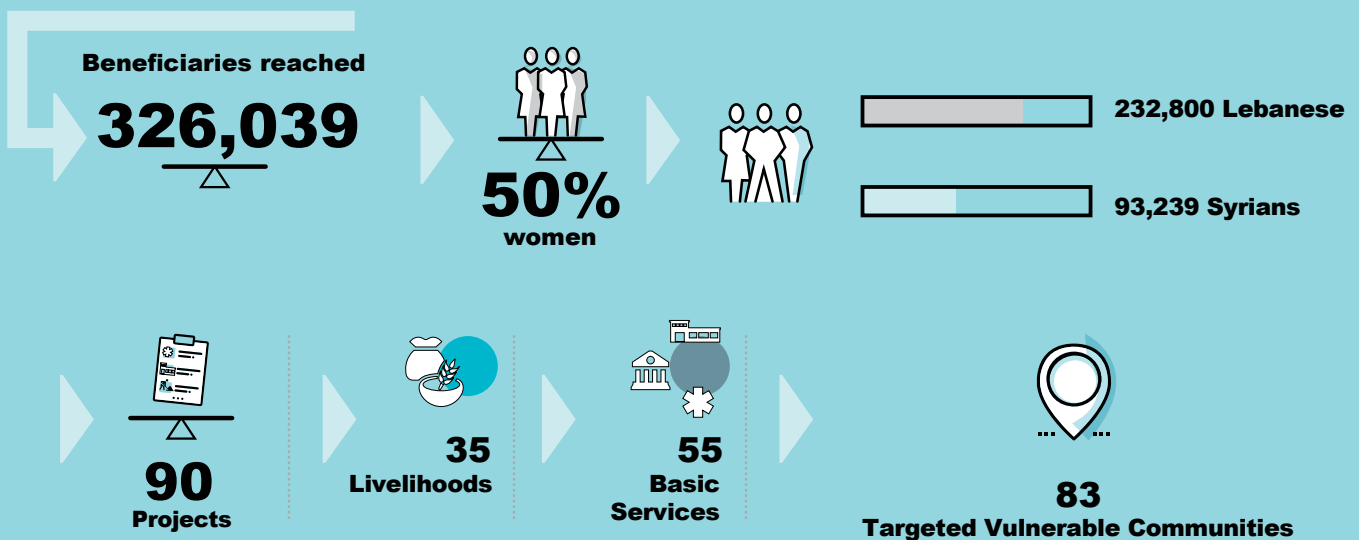
Since 2013, the Lebanon Host Communities Support Programme has been implemented jointly through a partnership between the Ministry of Social Affairs (MoSA) and the United Nations Development Programme (UNDP) as a comprehensive, coordinated, and durable response to the needs of the host communities during the Syrian Crisis given its implications on the country.

The Programme targets localities characterized by high levels of pre-crisis poverty, high pressure based on the ratio of the displaced to the Lebanese, and patterns of increased social tension using the 251 most vulnerable cadasters.

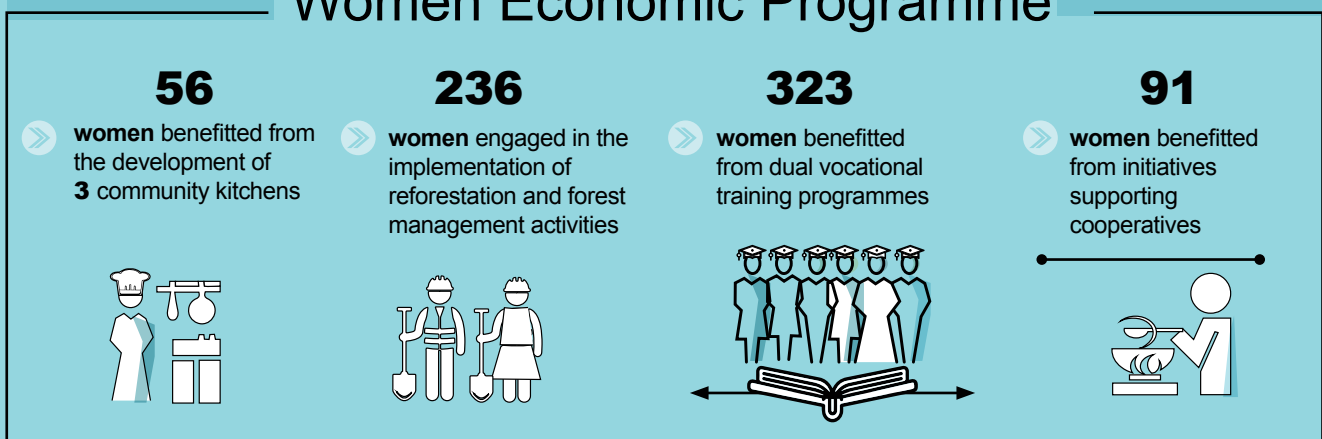
The interventions aim at:

- Improving the delivery of basic services within the municipality or union of municipalities
- Supporting livelihoods and economic opportunities
- Preventing conflict and building stability

2017 IN NUMBERS

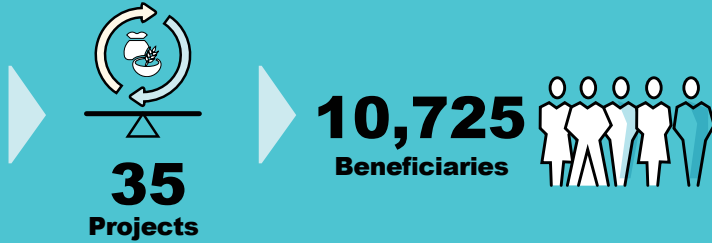


Women Economic Programme





Output 1: Livelihoods and economic opportunities increased



- **200 farmers and their families** (820 vulnerable people in total) improved their livelihood opportunities through the rehabilitation of **2,075 m** of agricultural roads in Machha
- **1,050 inhabitants of Baalbeck Municipality** are benefitting (by boosting their earnings) from the rehabilitation of the old public market
- **298 people** benefitted from reforestation activities in Kfar Rouman
- **115 youths** found employment following the vocational training programmes and paid internships for **680 youths** (**323 females and 357 males**) in the Bekaa, North, South, and Mount Lebanon
- **147 micro, small and medium enterprises (MSMEs)** received in-kind grants to boost their businesses benefitting **7,877 people**
- **5 value chain** assessments were launched to develop action plans and propose interventions to foster job creation
- **1 labour market** assessment was finalized in partnership with the Office of the United Nations High Commissioner for Refugees (UNHCR) to support job creation in Aarsal

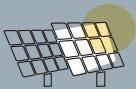




Output 2: Capacity of local actors strengthened in the delivery of basic services



30 municipal services and **25** social services projects, providing **222,198** Lebanese and **93,116** Syrians with improved access to basic services



4,232 people benefitting from the installation of **450** LED lighting posts in Majdel Anjar



79,402 people benefitting from wastewater and solid waste management interventions



78,664 people have access to cultural and recreational spaces



46,882 people have improved access to clean water



6,369 people benefitting from enhanced municipal infrastructure services



99,765 people benefitting from improved access & quality of services following the rehabilitation and/or equipping of
12 Public Schools
10 Social Development Centres (SDCs)
3 Public Healthcare Centres (PHCCs)

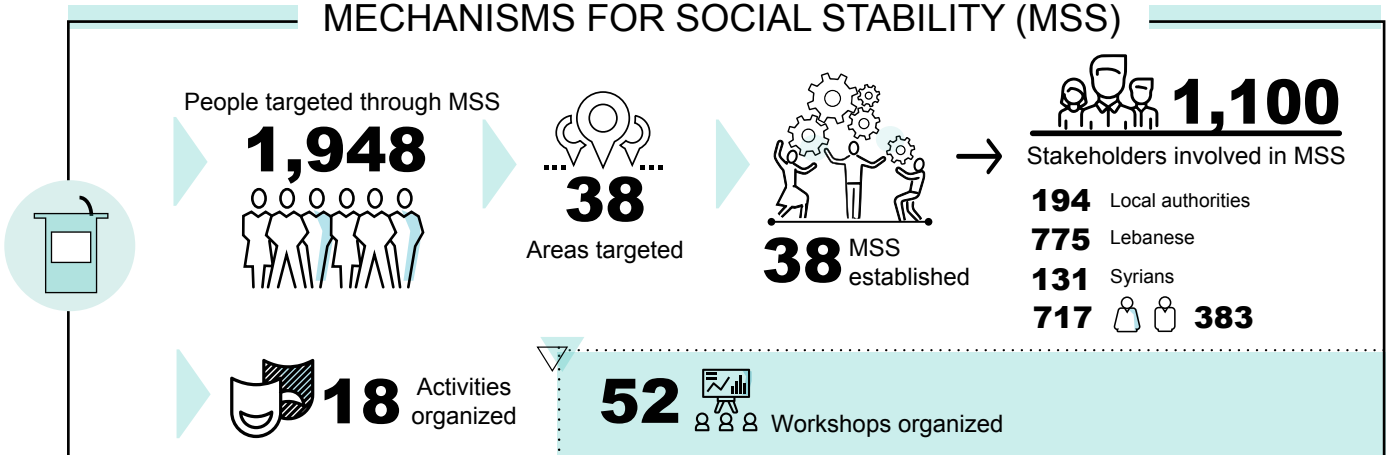


260 newly elected municipal bodies benefitted from **27** training sessions (**737** participants of which 168 were mayors, 113 deputy mayors, 340 municipal members, and 116 municipal employees)

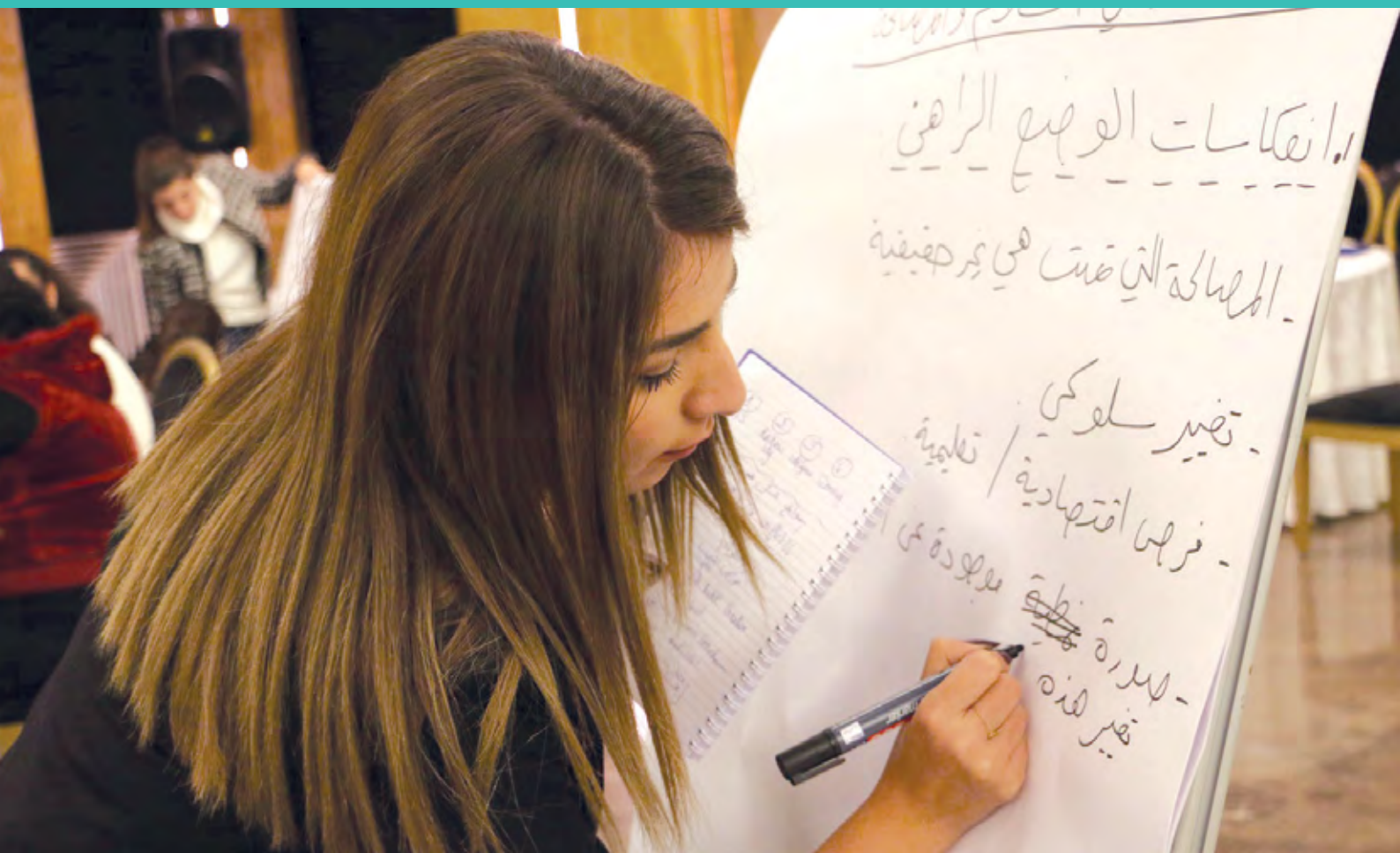


Output 3: Local level dispute resolution and community security improved

MECHANISMS FOR SOCIAL STABILITY (MSS)



CONFLICT MAPPING & ANALYSIS





Output 4: Capacity of the Government of Lebanon to respond to the influx of displaced Syrians strengthened



Support to the MoSA and the training of MoSA staff on:

- Conducting the **Maps of Risks and Resources (MRR)**



LOCAL AUTHORITIES



COMMUNITY



STAKEHOLDERS



MRR Multi-sectorial Municipal Action Plan

- Establishing the **MSS**

- **130 MoSA staff** involved at central and area levels in the MRR and MSS



MRR conducted in **14 clusters** of villages









270 Multi-sectorial municipal action plans and **14 cluster-level plans** available on MoSA's website www.socialaffairs.gov.lb
Out of the total **680 users**, **354 new users** registered in 2017 to access the MRR data online



Support to Governors' offices in coordination at area level

Ongoing contributions in 2017

Donor		Contribution (USD)
Netherlands	 Kingdom of the Netherlands	\$ 21,740,000
Germany – KfW	 german cooperation DEUTSCHE ZUSAMMENARBEIT	\$ 17,452,000
UK – DFID	 UKaid from the British people	\$ 10,640,000
United States – BPRM		\$ 7,000,000
ILO – KfW		\$ 5,000,000
Italy	 ITALIAN AGENCY FOR DEVELOPMENT COOPERATION	\$ 2,765,000
Norway	 ROYAL NORWEGIAN EMBASSY	\$ 1,759,000

New agreements signed in 2017

Donor		Contribution (USD)
UK – DFID	 UKaid from the British people	\$ 33,700,000
United States – BPRM		\$ 5,000,000
Norway	 ROYAL NORWEGIAN EMBASSY	\$ 1,822,000
Agence Catalan de cooperation (ACCD)	 Generalitat de Catalunya Government of Catalonia	\$ 454,000
The Catalan Fund for Development Cooperation (FCCD)	 FONTS CATALÀ DE COOPERACIÓ AL DESENVOLUPAMENT	\$ 135,000
Municipality of Barcelona	 Ajuntament de Barcelona	\$ 136,000
AMB	 AMB	\$ 35,000



Looking
ahead
2018

1- Develop a joint strategy to scale up the LHSP platform aiming to:



Generate job opportunities



Enhance economic development



Support inclusive economic growth



Effective structure



Inter-institutional coordination

Engagement of national and international partners on strategic decisions



Development of a new Theory of Change for LHSP



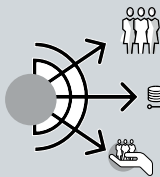
Development of indicators for LHSP within a unified reporting mechanism



Aligning funding modalities with

- Strengthened Programme design
- Longer implementation funding timelines

2- Increase focus on Livelihoods and Local Economic Development



Improve gender equality

Empower women economically

Enhance economic opportunities and innovation for women and youth in vulnerable areas

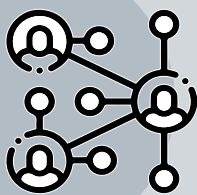
3- Maintaining support to local participatory mechanisms for service delivery and conflict prevention



The capacity development of MoSA staff on MRR and MSS will continue

Merging of MRR and MSS to develop better conflict-sensitive needs analysis process

4- Maintain the platform for coordination and dialogue between local and national actors



- Platform and framework for **coordination** and **strategic implementation of interventions**

- Stability

- Tension prevention

For More Information



Empowered lives.
Resilient nations.

United Nations Development Programme
Arab African International Bank Bldg.
Banks Street
Nejmeh, Beirut 2011 5211
Lebanon
E-mail: registry@undp.org.lb
Website: lb.undp.org



Ministry of Social Affairs
Toufiq Youssef Aouad street, behind the
Ministry of Justice - Badaro
Beirut - Lebanon
E-mail: mosa.undp.lhsp@gmail.com
Website: www.socialaffairs.gov.lb
Phone: +961 1 611260