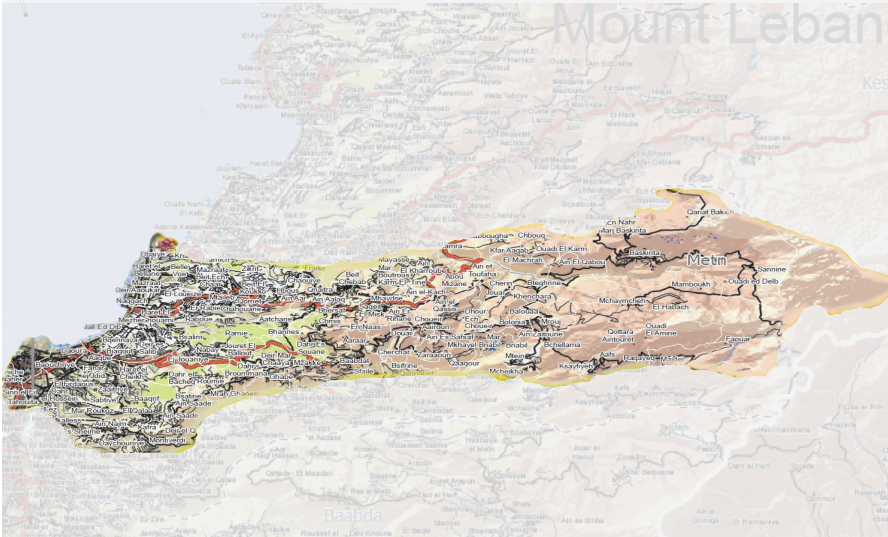


## GEOGRAPHIC DATA

The Federation of Municipalities of the Northern and Coastal Matn map<sup>1</sup>

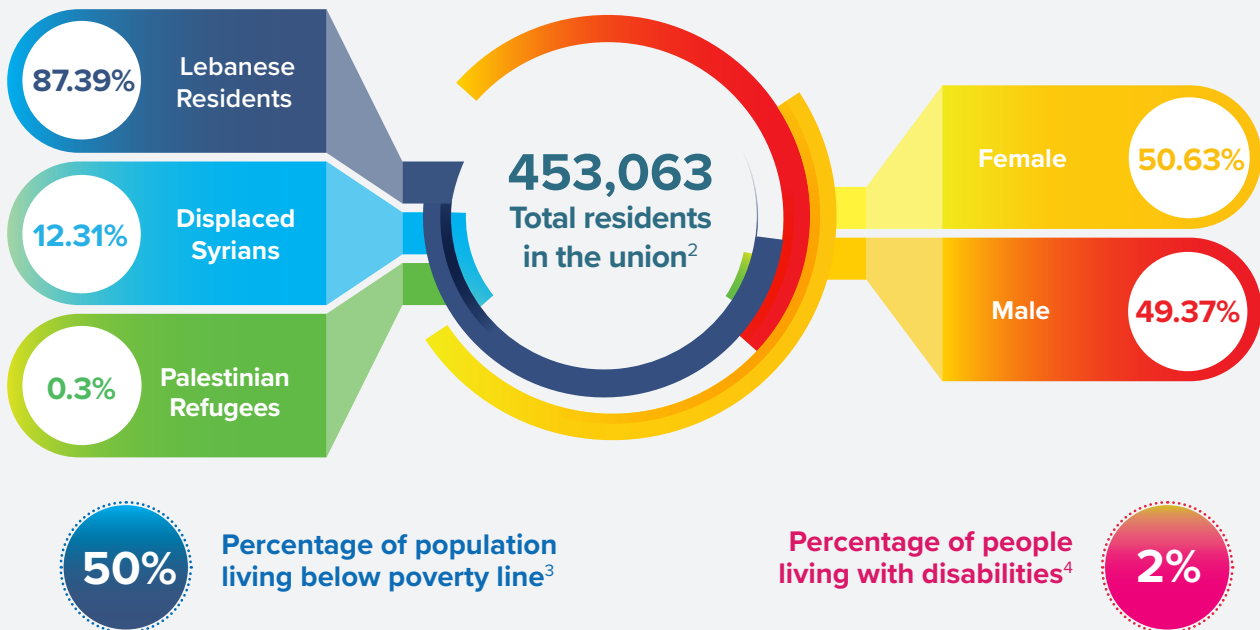


**District**  
Matn

**54**  
Municipalities  
in the district

**33**  
Municipalities  
in the union

## DEMOGRAPHIC DATA



<sup>1</sup> United Nations Office for Coordination of Humanitarian Affairs (OCHA) <https://www.unocha.org/media-centre/maps-infographics>

<sup>2</sup> 2020 LCRP Population Package and PHC Master list: Lebanon Information Hub <https://data2.unhcr.org/en/situations/syria/location/71>

<sup>3</sup> and <sup>4</sup> Federation of Municipalities of the Northern and Coastal Matn

# COMMUNITY INFRASTRUCTURE

Services available in the community<sup>5</sup>

**Power/Water supply |  
Markets | Agriculture |  
Health | Education | Banking |  
Hotels | Restaurants**

Agriculture as natural resources<sup>6</sup>

**- Apples and cherries  
on the mountains.  
- Citrus fruits on the  
coastal Matn.**

## ECONOMIC DATA

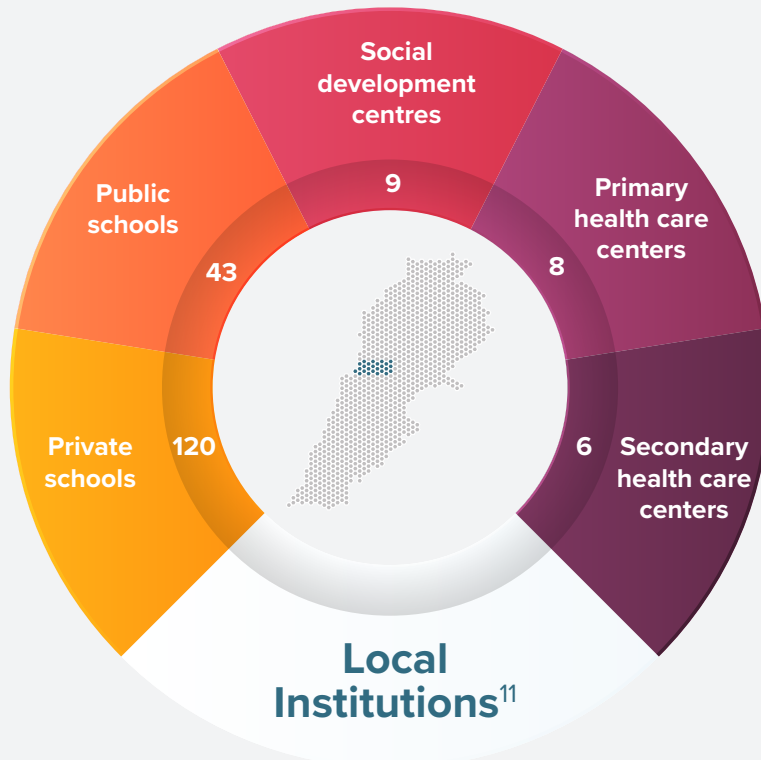


**Dominant  
business sector:<sup>7</sup>**  
Trade and Services

**Income average per  
Lebanese residents'  
household:<sup>8</sup>**  
Less than 650,000 LBP **9.1%**  
650-1200 **16.5%**  
1200-2400 **27.7%**  
2400-5000 **33.5%**  
5000+ **12.6%**

**Income average per  
Syrian Refugees  
household:<sup>9</sup>**  
20,000 LBP and  
above per day

**Unemployment  
rate:<sup>10</sup>**  
**7.1%**



5, 6, 7 and 9 Federation of Municipalities of the Northern and Coastal Matn.

8 Labor Force and Household Living Conditions Survey 2018-2019, Central Administration of Statistics Lebanon

10 and 11 2020 LCRP Population Package and PHC Master list: Lebanon Information Hub <https://data2.unhcr.org/en/situations/syria/location/71>