



**UNITED NATIONS
STRATEGIC FRAMEWORK
(UNSF)
LEBANON
2017-2020**

SIGNATURE PAGE

Through the present United Nations Strategic Framework (UNSF), the United Nations System in Lebanon pledges to work in support to the Government of Lebanon to meet the country's security, political, human rights, humanitarian and developmental priorities for the period starting January 2017 to December 2020.

In implementing the United Nations Strategic Framework, the United Nations system in Lebanon reaffirms its commitment to leverage its resource and capacities in a coherent and integrated manner to improve the lives of the Lebanese people and all those Lebanon seeks to protect.

The United Nations Strategic Framework is the result of consultations carried out by the various members of the UN family in Lebanon with various national authorities to ensure it reflects national priorities.

By signing the below, the Government of Lebanon and the United Nations system in Lebanon approve this United Nations Strategic Framework as the basis of cooperation between the two entities for the 2017-2020 period and express their engagement to the realization of its objectives.

Fouad Fleifel

Secretary General of the Council of Ministers
Government of Lebanon

Philippe Lazzarini

Deputy Special Coordinator
UN Resident and Humanitarian
Coordinator for Lebanon

UN AFP signatures

Iyad Abumoghli

UNEP Director and Regional Representative

Fawzi Al-Zioud

IOM Country Representative

Tanya Chapuisat

UNICEF Representative

Johan Peleman

UNSCOL Chief of Staff

Mireille Girard

UNHCR Representative

Hamed Al Hammami

Representative of UNESCO to Lebanon and Syria, Director of UNESCO Beirut

Dominik Heinrich

WFP Representative

Ruba Jaradat

ILO Regional Director

Bana Kaloti

UNOPS Director

Masood Karimipour

UNODC Regional Representative for the Middle East & North Africa

Asma Kurdahi

UNFPA Assistant Representative

Mohammad Naciri

UN Women Regional Director

Tarek Osseiran

UN-Habitat Programme Manager

Cristiano Pasini

UNIDO Representative to Lebanon, Jordan and Syria

Major General Michael Beary

UNIFIL Force Commander

Luca Renda

UNDP Country Director

Dr. Gabriele Riedner

Acting WHO Representative

Maurice Saade

FAO Representative

Hakam Shahwan

Acting Director of UNRWA Affairs, Lebanon

Abdel Salam Sidahmed

OHCHR Regional Representative

Abbreviations

ALI	Association of Lebanese Industries	MOD	Ministry of Defense
CAS	Central Administration of Statistics	MOE	Ministry of Environment
CBO	Community Based Organizations	MOET	Ministry of Economy and Trade
CDR	Council for Development and Reconstruction	MOEW	Ministry of Energy and Water
CEDAW	Convention on the Elimination of all Forms of Discrimination Against Women	MOF	Ministry of Finance
CERD	Committee on the Elimination of Racial Discrimination	MOFA	Ministry of Foreign Affairs
CNRS	National Council of Scientific Research	MOI	Ministry of Industry
CP	Child Protection	MOIM	Ministry of Interior and Municipalities
CPD	Country Development Plan	MOJ	Ministry of Justice
CRC	Convention for the Rights of the Child	MOL	Ministry of Labour
CSO	Civil Society Organization	MOPH	Ministry of Public Health
CT	Countering Terrorism	MOSA	Ministry of Social Affairs
CVE	Countering Violent Extremism	MOYS	Ministry of Youth and Sports
ECOSOC	Economic and Social Council of Lebanon	MTS	Medium Term Strategy
ESCWA	United Nations Economic and Social Commission for Western Asia	NCLW	National Commission for Lebanese Women
FAO	The Food and Agriculture Organization	NEEAP	National Energy Efficiency Action Plan
FBO	Field Based Organizations	NGO	Non-Governmental Organization
FSMS	Food Safety Management System	NHRI	National Human Rights Institute
GBV	Gender-Based Violence	NPM	National Preventive Mechanism
GDP	Gross Domestic Product	NPTP	National Poverty Targeting Program
GEWE	Gender Equality and Women Empowerment	NREAP	National Renewable Energy Action Plan
GoL	Government of Lebanon	NSSF	National Social Security Fund
GSO	General Directorate of General Security	NTTO	National Technology Transfer Office
HCC	Higher Council for Childhood	OHCHR	Office of the United Nations High Commissioner for Human Rights
ICESCR	International Covenant on Economic, Social and Cultural Rights	OMSAR	Office of the Minister of State for Administrative Reform
ICT	Information and Communications Technologies	PCHR	Palestinian Center for Human Rights
IHRS	International Human Rights System	PCM	Presidency of the Council of Ministers
ILO	The International Labour Organization	PHC	Primary Health Care
IMS	Information Management System	PMO	Prime Minister's Office
IOM	International Organization for Migration	PMT	Programme Management Team
IRI	Industrial Research Institute	POP	Persistent Organic Pollutants
ISF	Internal Security Forces	POW	Programme of Work
ISG	International Support Group for Lebanon	PSD	Personal Status Department
LAF	Lebanese Armed Forces	PVE	Preventing Violent Extremism
LCPC	Lebanese Cleaner Production Center	RACE	Reaching All Children with Education in Lebanon
LCRP	Lebanon Crisis Response Plan	RCO	Resident Coordinator's Office
M&E	Monitoring and Evaluation	RPTA	Railway and Public Transport Authority
MEHE	Ministry of Education and Higher Education	SCR	Security Council Resolution
MOA	Ministry of Agriculture	SDG	Sustainable Development Goals
		SME	Small and Medium-sized Enterprises
		SOP	Standard Operating Procedures
		SPF	Social Protection Floor

UN Habitat	United Nations Human Settlements Programme	UNIDO	United Nations Industrial Development Organization
UN Women	United Nations Entity for Gender Equality and the Empowerment of Women	UNIFIL	UN Interim Force in Lebanon
UNCT	United Nations Country Team	UNODC	United Nations Office on Drugs and Crime
UNDAF	United Nations Development Assistance Framework	UNOPS	United Nations Office for Project Services
UNDP	United Nations Development Programme	UNRC/HC	United Nations Resident Coordinator/Humanitarian Coordinator
UNEG	UN Evaluation Group	UNRWA	United Nations Relief and Works Agency for Palestine Refugees
UNEP	United Nations Environment Programme	UNSCOL	Office of the UN Special Coordinator for Lebanon
UNESCO	United Nations Educational, Scientific and Cultural Organization	UNSF	United Nations Strategic Framework
UNFCCC	United Nations Framework Convention on Climate Change	UPR	Universal Periodic Review
UNFPA	United Nations Population Fund	WASH	Water, Sanitation and Hygiene
UNHCR	United Nations High Commissioner for Refugees	WB	World Bank
UNICEF	United Nations Children's Fund	WFP	World Food Programme
		WHO	World Health Organisation

Contents

1. Executive summary	3
2. Situation analysis	5
3. Normative framework of the UNSF	9
4. Strategic objectives	12
Core priority 1: All people in Lebanon enjoy peace and security	12
Key challenges to be addressed	13
Strategy of engagement	14
Core priority 2: Lebanon enjoys domestic stability and practices effective governance	16
Key challenges to be addressed	16
Strategy of engagement	18
Core priority 3: Lebanon reduces poverty and promotes sustainable development while addressing immediate needs in a human rights/gender-sensitive manner	21
Key challenges to be addressed	21
Strategy of engagement	25
5. Principles of partnership	33
6. Coordination and management	35
7. Monitoring and evaluation	38
8. UNSF Results matrix	39
Annex I: Summary of UNSF Consultation Process	56
Annex II: List of international human rights instruments ratified by Lebanon and reporting periods.	59
Annex III: UNSF links to the SDG framework	60

1. Executive summary

1. The United Nations Strategic Framework (UNSF) represents the UN's cooperation framework with Lebanon for the period 2017-2020. It replaces the previous United Nations Development Assistance Framework (UNDAF) for Lebanon (2010-2016). The UNSF presents the key shared objectives of the UN system, the areas in which it intends to support the Government of Lebanon and its people, and the expected outcomes of its assistance.
2. In view of the multi-dimensional challenges Lebanon is facing, and the multiple global mandates under which the UN operates, the UN recognizes that an effective response to support Lebanon in maintaining peace, stability and development requires unity of purpose and the integration of strategies and interventions under a common vision: the 'Whole-of-Lebanon' approach. The approach calls for a holistic analysis and UN response to Lebanon's challenges. It proposes leveraging and integrating the UN's diverse expertise, capacities and resources to support the Government of Lebanon to meet its priorities and manage security, political, governance and socio-economic challenges to stability. The approach also aims to support Lebanon on the path to longer term sustainable development in accordance with the vision, principles and goals of the 2030 Agenda.
3. Accordingly, the UN's agreed mission statement is to support '*a secure, stable and prosperous Lebanon, exercising full sovereignty while respecting, protecting and ensuring the rights of all*'. In carrying out this mission, three core priorities - which constitute fundamental preconditions for Lebanon's long term stability and prosperity - will frame UN system support to government:

Core Priority 1: All people in Lebanon have peace and security.

4. The UN intends to help mitigate external threats to Lebanon, strengthen domestic security and law and order and defuse local inter-communal tensions. To mitigate threats to Lebanon's territorial integrity, this will include support for: strengthening border control, prevention of violent extremism and reinforcing LAF institutional capacities and advocating for continued international support for defending Lebanon against terrorism; all in accordance with humanitarian, human rights principles and Lebanese law and regulations. To strengthen domestic security, interventions planned include supporting internal security forces at national level as well as reinforcing municipal policing at the decentralized level. To defuse inter-communal tensions, efforts foreseen include strengthening capacities of district authorities to monitor local tensions and increase local peace-building/conflict resolution initiatives with a particular focus on preventing youth radicalization through increased community engagement. Communities will also be engaged to ensure women's interests are addressed consistent with the women's Peace and Security Agenda. The orientation of the UNSF towards this long-term priority aligns particularly with the 16th sustainable development goal of creating peaceful and inclusive societies.

Core Priority 2: Lebanon enjoys domestic stability and practices effective governance.

5. The UN intends to support mechanisms which promote accountability and inclusive participation, including through elections and civil society engagement. The UN further plans to support the strengthening of core executive and legislative capacities of the state, public administration, economic and financial management, national policy-development and statistical and planning capacities. Support will also include strengthening of judicial and human rights institutions, improving prison administration and addressing impunity. The advancement of gender equality and women as well as youth empowerment in political, social and economic spheres will also be prioritized. These efforts are strongly related to: SDG 16 on peaceful and inclusive societies with access to justice and effective, accountable and inclusive institutions, SDG 10 on the reduction of inequality including in terms of political inclusion, as well as to SDG 5 on gender equality and empowerment of women and girls.

Core Priority 3: Lebanon reduces poverty and promotes sustainable development while addressing immediate needs in a human rights/gender sensitive manner.

6. The UN will pursue a ‘dual-track’ approach that focuses both on mitigating the impact of the Syrian conflict and addressing pre-existing structural constraints. UN support to address these socio-economic challenges will be provided in three areas. These consist of strengthening productive capacities and generating inclusive growth, improving equitable access and delivery of social services, and promoting environmental protection and effective natural resource management. The planned support of the UN under this heading is directly and indirectly linked to nearly the full range of Sustainable Development Goals, as detailed in annex 3.
7. The UNSF was developed by the United Nations system in Lebanon in consultation with national counterparts including line ministries, Government technical offices, civil society organizations, as well as international partners. Annex I of the UNSF includes a summary of the consultation process and associated recommendations.
8. While the UNSF provides the overall vision for UN system-wide engagement in country, it will be implemented through the country programmes of its specific UN Agencies, Funds and Programmes, as well as through joint programming in priority areas where it is of strategic importance to leverage a wide range of UN capacities and resources. Progress made against the overall commitments outlined in the UNSF will be jointly monitored by the Government of Lebanon and the United Nations on an annual basis and reviewed at mid-term.
9. The present document summarizes the UN’s planning assumptions in terms of context analysis and key priorities identified. It describes the normative framework underpinning and guiding UN priorities and proposed cooperation in country. The document outlines the proposed UN engagement strategy for the medium term and the results framework agreed with the GoL to guide UN assistance, including arrangements for coordination and joint monitoring and evaluation.

2. Situation analysis

The following section describes the UN's shared understanding of the operational environment in Lebanon including key challenges and risks to the country's stability, the UN's ongoing efforts in country and its comparative advantages. These serve as a basis for defining the UN's strategic priorities in country.

Operational environment

10. Five years into the Syrian conflict, Lebanon's resilience is being tested and its stability threatened. A growing number of Lebanese have expressed concerns that the mass influx of Syrians constitutes an existential crisis, threatening to upset the complex dynamics of the country. There is a consensual position across the Lebanese society and Government that any form of local integration, including naturalization is not an option. Lebanon has so far been remarkably resilient to pressures that have impacted it and exacerbated existing domestic challenges. Nevertheless, the situation is fragile and a number of factors pose significant threats to peace, stability and development.
11. There are three main potential drivers of insecurity in the country: First is the situation in the south and with Israel. The situation during 2015 has been relatively calm, but the risk of miscalculation from both sides remains – particularly related to developments in the south of Syria. Second, the threat to Lebanon's border with Syria remains significant. Lebanese security forces – particularly the LAF – have done a remarkable job in deterring these risks and combating terrorism. However, these risks remain, as evidenced by the continued detention of nine Lebanese servicemen by ISIL. Third is the effect of the Syrian conflict on domestic political dynamics generally and in specific hot spots of the country. An ongoing concern is the risk of increased inter-communal tension and violence.
12. The conflict in Syria has had a direct impact on political stability in Lebanon. The political deadlock and paralysis, endemic to Lebanon even before the onset of the crisis and exacerbated by the conflict in Syria, has impacted the effective functioning of institutions, including on key decisions required to be taken by the state, such as national parliamentary elections, and the approval of the national budget. The national budget, for example, has not been approved since 2005. Furthermore, Parliament - which is responsible for electing the President - has been unable to convene to do so due to a lack of quorum since the end of the former President Sleiman's term in May 2014.
13. Socio-economically, a number of factors are of concern given their potential to affect the stability of the country. The Lebanese economy has struggled in recent years, managing only a weak annual growth rate of two percent on average¹. Lebanon has incurred losses related to the Syria crisis (as main drivers of the economy: industry, construction and tourism, were directly affected)

¹ World Bank Lebanese Economic Monitor - Fall 2015

and increased expenditure related to the population increase. The total number of people living in poverty has been increasing². Unemployment rates have also been rising and longstanding inequalities are deepening. Public services are overstretched with demand exceeding the capacity of institutions and infrastructure to meet needs. Limited localized tensions at local level have been noted, mostly over competition for jobs and access to resources/services. Lebanese are extremely concerned about the protracted presence of around 1.5 million externally displaced Syrians including 1.1 million refugees registered with UNHCR³. The emigration of large pools of talent has led to concern about the possibility of brain drain negatively impacting on the country's economic and innovation potential.

14. Over the medium-term, and based on the continuation of the present dynamics, the most likely prospect is that Lebanon will continue to cope, with possible gradual deterioration of the current situation as macro-economic/fiscal challenges deepen and critical reforms remain stalled. Contingent on developments in Syria, the prospective medium-term scenario for Lebanon includes a continued fragile security environment and continuing threats to law and order. Underlying tensions between communities may be exacerbated by occasional acts of terrorism or inter-communal violence. Further challenges faced by state institutions and of capacity for public services delivery as well as mounting socio-economic, humanitarian and environmental challenges - including reduced capacity of the productive sectors to compete in the global markets, ability to attract investments and generate jobs - may also be noted. Further reduction in livelihood opportunities, along with increased competition for work, could further depress wages, increase tension at community level and further degrade living and working conditions, especially for the most vulnerable – the poor, persons with disabilities, youth and women. Environmental deterioration, poverty increase, crowding, poor shelter conditions, and population mobility furthermore increase the risk of communicable diseases and outbreaks and overall population health deterioration.

The UN's role and comparative advantage

15. The UN system has a long history of cooperation with Lebanon. Today it operates in Lebanon through 23 UN Agencies, Funds and Programmes, a Peacekeeping Mission (the UN Interim Force in Lebanon) and a Political Mission (the Office of the UN Special Coordinator for Lebanon) with an estimated 10,000 peacekeepers and approximately 2,500 civilian staff.
16. Lebanon has been a key item on the agenda of the Security Council, which has long been concerned with security and stability in the country. Twenty-six Security Council resolutions have been adopted since 1978 aimed at helping Lebanon restore its sovereignty, stability and political independence. Resolution 1701 of August 2006, which ended the devastating 34-day war that

² Poverty figures are estimated separately for the individual population cohorts (Lebanese, Syrians, Palestinian refugees). For current estimates, see LCRP 2015-2016.

³Inter-agency portal, <http://data.unhcr.org/syrianrefugees/country.php?id=122>

same year, remains a cornerstone for continued stability and security for Lebanon and the region⁴.

17. Aside from its political and peacekeeping missions, the UN has for many years supported the Government of Lebanon in meeting international standards and obligations and in supporting national development efforts through the provision of policy support and technical assistance across a number of areas ranging from public and financial reform, elections, human rights, health, education, agriculture, support to small and medium enterprises and building the capacity of the national statistical system for supplying statistics and data for evidence based policy making
18. As a result of the impact of the Syrian conflict in Lebanon, the UN has since 2012 scaled up its presence in Lebanon, through its humanitarian agencies, to support the government in meeting the pressing needs of the most vulnerable.
19. Since 2015, the UN in Lebanon is managing an annual portfolio of approximately \$ 1 billion including humanitarian and development assistance particularly in assistance to the most vulnerable; support to municipalities and to the delivery of basic public services such as education and water.
20. On the basis of its past and current engagement in Lebanon, the UN assesses its comparative advantages to be:
 - Its historic and trusted partnership with the Government and people of Lebanon, as well as its role in coordinating international assistance at both global and country levels;
 - A combination of its good offices⁵ and peacekeeping functions in helping maintain peace and security, and creating an enabling environment for provision of humanitarian and development assistance;
 - Operational versatility, flexibility and capacity, including ability to target the most vulnerable populations, given the extensive presence and operations of UN agencies and their partners across the country;
21. Proven expertise and experience in providing technical assistance to the Government to support the implementation of international standards and strengthen institutional capacities. The UN achieves this potential through partnerships with beneficiary populations, close collaboration with national and regional and local government authorities and by bringing to bear the expertise of its international and national staff combining local knowledge and skills with international know-how and best practices.

⁴ <https://documents-dds-ny.un.org/doc/UNDOC/GEN/N06/465/03/PDF/N0646503.pdf?OpenElement>

⁵ Good offices are steps taken by the United Nations Secretary-General or his Special Representatives on his behalf, publicly and in private, drawing upon their independence, impartiality and integrity, to prevent disputes from arising, escalating or spreading

Strategic Priorities

22. Against this background, and taking into account national priorities, international mandates, and the UN's comparative advantage, the UN system in Lebanon has identified a number of priorities in support of the Government and the people of Lebanon. These include: 1) increasing support to Lebanese security forces to safeguard security and deter terrorism; promote a principled approach to maintaining law and order and mitigating localized tensions; 2) continuing support for national dialogue efforts, improved governance functions and the strengthening of the rule of law; 3) supporting the promotion of inclusive, sustainable and diversified economic growth; 4) and promoting inclusive, sustainable and equitable access to quality services to all, with particular attention to the most vulnerable, in accordance with Lebanese laws and regulations. These in turn will contribute towards achieving the Sustainable Development Goals placing particular focus on key groups such as women and youth.
23. Support to Lebanon in mobilizing increased financial resources to be channeled to national institutions will also be necessary to meet growing needs and mitigate a further deterioration of the situation.
24. The UN will support Lebanon to achieve these objectives by building on its efforts and capacity deployed so far and through a mixture of policy support, technical assistance, support to productive sectors of the economy, reinforcement of social services capacity including in health and education sectors, capacity development and direct delivery of humanitarian aid.
25. The present challenges to Lebanon's peace, stability and development require the adoption of a holistic 'Whole of Lebanon' role for the UN in Lebanon, and a stronger and more coherent system-wide approach to supporting government in addressing these complex challenges. As such, and unlike previous UNDAFs, a system-wide integrated cooperation plan for Lebanon is proposed, outlining UN support in each of the three areas of concern: peace and security, political stability and governance, socio-economic and sustainable development.

3. Normative framework of the UNSF

This section describes the key national and international frameworks and mandates that underpin the identification of national priorities and the UN's proposed interventions.

26. The UN's engagement in Lebanon is guided by relevant national priorities and international frameworks and builds on its on-going cooperation programmes and comparative advantages vis-à-vis other relevant partners in Lebanon.
27. The objectives and results presented in the UNSF were derived from the stated priorities of the Government of Lebanon and adhere to a range of Security Council resolutions and relevant General Assembly resolutions, most notably the Sustainable Development Goals.

National normative framework

28. In the absence of an approved national development plan and an updated national budget, the UN system in Lebanon currently operates under the framework of national priorities as defined in the Lebanese Government Declaration (adopted in March 2014). The Government's declaration stresses security and stability, including tackling the threat of terrorism, as issues of highest priority. Beyond security, the Government emphasizes the importance of revitalizing the national dialogue and strengthening the economy to improve the living conditions of the Lebanese people. Reinforcement of the public administration apparatus is also a priority, as it is a necessary precondition for achieving several government priorities. The Government has also called for international support to develop the country's natural resources and the Prime Minister and the UN Secretary-General have exchanged letters in this regard⁶. Finally, the Government calls for international support in meeting immediate humanitarian needs (see note on terminology below) and other affected populations in Lebanon, and also points to the need to tackle the wider consequences of the Syrian crisis, which has longer-term impacts on almost all aspects of Lebanese society.
29. A number of national policy and or strategy documents at sector/theme level, approved by the Council of Ministers or by Parliament have also been taken into account in the development of the UNSF. These are referenced in the Results and Resources Framework of the present document.
30. Furthermore, the priorities of the Lebanese Government as reflected in the Lebanese statement at the London Conference on February 4th 2016, also serve as a guide for UN support under the UNSF within the areas of education, economic opportunities and jobs.
31. At the time of development of the UNSF, the Government of Lebanon had not finalized the National Sustainable Development Strategy. However, the UNSF outlines how each proposed intervention contributes to the overall objectives proposed in the Sustainable Development

⁶ As per exchange of letters between the Prime Minister and the UN Secretary-General in March and May 2016.

Goals (SDGs). The UNSF is also informed by the Lebanese visions and priorities for sustainable development outlined in the Lebanon National Report to the United Nations Conference on Sustainable Development (Rio+20) from 2012.

32. When a national development plan or national budget is approved, the UNSF will be reviewed with government to ensure continued alignment with government priorities.
33. The UNSF reaffirms humanitarian principles in relation to the impact of the Syria crisis, including the needs of over 1 million Syrian refugees, and acknowledges the continued requirement for a Lebanon Crisis Response Plan (LCRP) that supports the Syrian refugees while also strengthening the resilience of local institutions and host communities to manage the current situation. UN support for the LCRP, which is expected to be extended to cover the 2017-2020 period, is outlined in the UNSF. The LCRP and UNSF are thus fully aligned and complementary.

A note on terminology

The UN characterizes the flight of civilians from Syria as a refugee movement, and consider that these Syrians are seeking international protection and are likely to meet the refugee definition.

The Government of Lebanon considers that it is being subject to a situation of mass influx. It refers to individuals who fled from Syria into its territory after March 2011 as temporarily displaced individuals, and reserves its sovereign right to determine their status according to Lebanese laws and regulations.

International normative framework

34. In working to support the Government of Lebanon advance towards the goals laid out in the Government declaration, the UN will continue to operate according to relevant Security Council Resolutions, including SCR 1701, which calls for a long-term security solution in Lebanon - including the territorial integrity, sovereignty and political independence of Lebanon - and for the international community to contribute to the development of Lebanon.
35. UN activities and support to reinforce the capacities of the Lebanese Armed Forces are also mandated by SCR 2236, calling for further international support for these forces. The proposed support with regards to border control and countering terrorism and violent extremism are in accordance with SCR 2249, 2195, 2178 and other relevant resolutions.
36. The activities of the UN in Lebanon are similarly framed by SCR 1325 and subsequent resolutions on women, peace and security, which call for increased participation and inclusion of women in security, peace and stabilization efforts, as well as by SCR 2250, which calls for better protection and strengthened societal participation of youth.
37. The activities of the UN in Lebanon will also remain framed under the full spectrum of legal international obligations with regards to human rights, including the follow up of

recommendations of the 2015 Universal Periodic Review and the CEDAW Convention. A list of international human rights based conventions ratified by Lebanon is included in Annex II.

38. The UN will continue to apply relevant international norms and standards providing for the protection of, and durable solutions for refugees. The ultimate goal for the United Nations is the realization of durable solutions to the plight of refugees. In light of the position of the Government of Lebanon according to which any form of local integration, including naturalization⁷ is not an option, the durable solutions being pursued for Syrians displaced into Lebanon, including those registered with UNHCR, are their repatriation in safety and dignity to their country of origin, abiding by the principle of non-refoulement and resettlement to a third country.

The position of the Government of Lebanon is: *Any form of local integration is unconstitutional and therefore not an option. The Government considers that the only durable solution being pursued for Syrians displaced in Lebanon is their safe return to their country of origin in accordance with applicable norms of international law and taking into full consideration the vital interests of the host country. Resettlement to third countries are seen as a possible but partial solution.*

Key Security Council resolutions:

Symbol	Title	Date of adoption
S/Res/1325	ON WOMEN AND PEACE AND SECURITY	31 Oct 2000
S/Res/1701	ON FULL CESSATION OF HOSTILITIES IN LEBANON AND ON EXTENDING AND STRENGTHENING THE MANDATE OF THE UN INTERIM FORCE IN LEBANON (UNIFIL) TO MONITOR THE CEASEFIRE	11 Aug 2006
S/Res/2178	ON FOREIGN TERRORIST FIGHTERS	24 Sep 2014
S/Res/2195	ON TERRORISM AND CROSS-BORDER CRIME	9 Dec 2014
S/Res/2236	ON UNIFIL	21 Aug 2015
S/Res/2249	ON TERRORISM	20 Nov 2015
S/Res/2250	ON YOUTH, PEACE AND SECURITY	9 Dec 2015
S/Res/2254	ON SYRIA	18 Dec 2015
S/RES/2258	ON SYRIA	22 Dec 2015

Aligning to the Sustainable Development Goals

39. Equally, the activities of the UN will be guided by the newly adopted Sustainable Development Goals (SDGs) and related 2030 Agenda agreed upon by all UN Member States at a summit held in September 2015. In the absence of a national SDG plan, indicators and targets, a significant effort has been made to align the UNSF to the global SDGs. Annex III illustrates how outcome statements and related indicators in the UNSF results framework contribute towards the achievement of the SDG Goals and relevant indicators. These will be revised and updated as Lebanon's SDG framework is developed and approved.

⁷ Naturalisation hereby refers to the process whereby a foreigner is granted citizenship.

4. Strategic objectives

40. In order to effectively support Lebanon in maintaining peace, stability and enabling development, the UN will integrate its resources and interventions under a common vision: the ‘Whole-of-Lebanon’ approach.
41. In line with this approach, the overarching strategic goal of the UN system is ‘a secure, stable and prosperous Lebanon exercising full sovereignty and while respecting, protecting and ensuring the rights of all.’
42. In working towards this overarching goal, the UN system in Lebanon will, in conformity with its mandates and Lebanese laws and regulations, aim to support the Government in addressing three inter-connected and “core” priorities which constitute fundamental prerequisites for long term stability and prosperity, and which provide the overall strategic framework for its assistance:

Core Priority 1: All people in Lebanon enjoy peace and security.

Core Priority 2: Lebanon enjoys domestic stability and practices effective governance.

Core Priority 3: Lebanon reduces poverty and promotes sustainable development while addressing immediate needs in a human rights/gender sensitive manner.

43. The following sections describe for each of these core priorities: the key challenges and needs the UN system hopes to help address during the 2017-2020 period, proposed partnerships and strategies for the achievement of objectives and priorities, and expected outcomes. A final section outlines the system-wide mechanisms through which the UN Strategic Framework will be coordinated, implemented and monitored.
44. Together, the UN support proposed under these three heading contributes directly or indirectly to nearly all of the SDGs, and as such the UNSF is specifically geared to support Lebanon in the first years of SDG implementation – from SDG 1 to SDG 16 and 17. That the UNSF resonates with the full range of SDGs attests to the holistic nature of the approach, combining support for security, development and humanitarian response under one common framework encompassing a resilient centered approach at every level.

Core priority 1: All people in Lebanon enjoy peace and security

Summary:

In support to peace and security objectives, the UN intends to help mitigate external threats to Lebanon, strengthen domestic security and law and order and defuse local inter-communal tensions. To mitigate threats to Lebanon’s territorial integrity, efforts foreseen include support to strengthening border control; prevention of violent extremism and reinforcing LAF institutional capacities and advocating for continued international support for defending Lebanon against terrorism; all in accordance with humanitarian, human rights principles and Lebanese law and regulations. To strengthen domestic security, interventions

planned include supporting internal security forces at national level as well as reinforcing municipal policing at the decentralized level. To defuse inter-communal tensions, efforts foreseen include strengthening capacities of district authorities to monitor local tensions and increase local peace-building/conflict resolution initiatives with a particular focus on preventing youth radicalization through increased community engagement and educational productive activities.

Key challenges to be addressed

45. Lebanon currently faces challenges to its security at the external, national and community levels. Threats at all levels have been compounded as a result of the conflict in neighboring Syria where dedicated efforts, including by the UN, are being made to bring about a political solution. Until a solution is found, it is likely that the conflict will continue to negatively impact Lebanon's security.
46. Lebanon's vulnerability is increased by the fact that the state faces continued challenges in controlling and managing its borders. Despite the considerable successes of the Lebanese Armed Forces and security services, not all movement into and out from Lebanon is regulated, and there remains a risk of infiltration with possibly violent intent. Since the start of the conflict in Syria, there have been over 20 terrorist attacks in Lebanon by UN-listed terrorist organizations, and nine Lebanese servicemen continue to be detained by ISIL. Concerted cooperation between the UN and Lebanese authorities border management matters, with due consideration to the principle of non-refoulement, will need to continue in the coming period.
47. Radicalization, and its association with violent extremism, especially among youth, is another concern, which has been highlighted in the recently adopted Secretary General's Plan of Action to Prevent Violent Extremism⁸. As far as children are concerned, their association with armed violence is a grave violation of the international rights of the child, and a peace and security concern which is closely monitored by the UN as per related Security Council Resolutions. The UN continues to receive allegations in this respect, and will continue to engage in constructive dialogue with relevant authorities in order to better address this threat to stability. A key challenge is also the implementation of the Women's Peace and Security agenda to ensure the role of women in preventing radicalization and countering violent extremism.
48. While new challenges have arisen along Lebanon's Eastern border, we should not confuse the relative calm along the Blue Line with long-term stability. Work still needs to be done to maintain and strengthen the commitments of all parties to stability along the blue line, as well as to ensure the strengthening of state authority across the entire Lebanese territory⁹, including through investments in security and public services. In the long term, it is hoped that such investment and UN engagement with the parties, including through the Tripartite Forum, will contribute to reducing the risks of renewed conflict across the Blue Line. This speaks directly to the long-term stability objectives of SCR 1701.

⁸ A/70/674, adopted on 12 February 2016

⁹ Security Council Resolution 1701

49. Peaceful civil protests, which surged during 2015, illustrated public reactions to the ongoing institutional on-going institutional paralysis. If left unattended, such actions are likely to grow and potentially to create instability in the country. It will require the UN to work closely with the Government to ensure more inclusive and equitable participation by citizens in setting the national agenda.
50. Tensions heightened by regional conflict are also manifest at the local level. Socio-economic, religious and political factors all play a role. Certain areas are fraught with difficult socio-economic conditions which, combined with lack of opportunity and political exclusion, can create an environment conducive to radicalization.

Strategy of engagement

Outcome 1.1: Territorial integrity and security strengthened in accordance with human rights principles

51. The Special Coordinator will continue to exercise the good offices mandate of the Secretary-General in order to defuse tensions and prevent their escalation into violence. In the area South of the Litani, UNIFIL continues working to prevent a resumption of hostilities between Lebanon and Israel and to assist the Government of Lebanon in extending its effective authority in the South. Through its maritime taskforce, UNIFIL assists the Government of Lebanon in securing its maritime borders and entry points by carrying out maritime interdiction operations. Continued efforts will be made in this respect subject to the direct mandate of the Security Council.
52. Control over borders is a key component of territorial integrity. The UN therefore aims, through specific programmes, to strengthen Lebanon's capacities to manage and control its borders. The UN will cooperate with Lebanese authorities including the Ministry of Interior and Municipalities/the General Directorate of General Security and the General Directorate of Internal Security Forces and Ministry of Finance/Customs to strengthen efforts to detect, deter and manage cross-border security threats, thus protecting migrants from trafficking and reducing the likelihood of irregular entry.
53. The UN will continue to promote with the international community, expedited support for the LAF particularly in the context of its updated Capabilities Development Plan, and the Strategic Dialogue. This will be done through existing platforms such as the Security Council, the International Support Group for Lebanon (ISG), and via local ambassadorial level meetings. UNIFIL will continue to privilege its strategic partnership with the LAF and facilitate increased support to reinforcing LAF capabilities for its continued assumption of sustained authority in South Lebanon. Cooperation with the LAF will also include the development of child-sensitive procedures to be followed during the conduct and follow-up of security operations, including in cases where they come in contact with the law, to ensure their referral from military to justice for children jurisdiction.

Outcome 1.2: Lebanese authorities are better equipped to maintain internal security and law and order in accordance with human rights principles.

54. The UN will continue to support the GoL in strengthening municipal and community based policing capacities in line with international human rights standards. The UN will support the further development of legal and regulatory frameworks for internal security and municipal policing. The UN will also help draw up and support training to implement the code of conduct developed jointly with the ISF, and support the General Directorate of the General Security to develop a similar code of conduct for its personnel based on human rights principles and standards. Special attention shall be given to considering the specific needs of vulnerable groups in police work, in particular those of women and children.
55. There is also broad consensus that security measures must be combined with interventions that address the socio-economic conditions contributing to the rising risk of radicalization across the region. The UN will initiate work to reinforce Lebanon's ability to prevent violent extremism and build its legal capacities to counter terrorism in support of the implementation of the Secretary General's Plan of Action to Prevent Violent Extremism¹⁰. The UN is currently drawing up a system-wide approach to guide its proposed interventions. These will include: strengthening the legal regime against terrorism, including rule of law and human rights compliant investigations and prosecutions and working with criminal justice and law enforcement officials, legislators, policy makers, and financial authorities. The UN will, as part of its prison reform efforts, also assist with the problem of radicalization in prisons, giving active consideration to human rights standards that are applicable to lawful detention and treatment of detainees, including women. Additional measures to address the socioeconomic dimensions of radicalization are addressed under Core Priority 3 of the UNSF.
56. The UN will continue to support the Government of Lebanon in implementing its "Work Plan to prevent and respond to the association of children with armed violence in Lebanon" (2014). In terms of capacity building, the Work Plan aims at strengthening its collaboration with inter-ministerial efforts of the Ministries of Defense, Interior and Municipalities and Justice around child-sensitive procedures to be applied as a way to prevent or better address the documented incidences of arrest and detention of children associated with armed groups in Lebanon.
57. In addition, the UN will support and build on commendable steps by other entities, such as the 2013 commitment not to involve children in hostilities signed by Palestinian factions. In this framework, the UN will scale-up its rehabilitation and socio-economic reintegration programmes for children at high risk of, or survivors of, association with armed forces and groups. The UN will also continue to advocate for the ratification of the "Optional Protocol to the Convention on the Rights of the Child on the Involvement of Children in Armed Conflict", signed by Lebanon in 2002.

¹⁰ A/70/674

Outcome 1.3: Lebanon has institutionalized mechanisms to promote peace and prevent, mitigate and manage conflict at municipal and local level.

58. Monitoring tensions and conflict risks is a key step to initiate and calibrate response. The mapping of areas susceptible to violence (so-called “hot spots”) is one such example. The United Nations will work with district authorities, security services and communities to develop systems and capacities to this effect.
59. The United Nations will support local peacebuilding and conflict prevention initiatives. Continued intervention at the local level will be key to ensuring enduring stability and defuse tensions early on. As part of increased community engagement, the United Nations will continue to foster the establishment of local peacebuilding committees, e.g. bringing together displaced populations and host community representatives, including meaningful representation of women. Such structures will be supported to identify, analyze and address both the causes and expressions of tensions. While inter-community tensions are often fuelled by the socio-economic shock of the Syrian crisis, and notably competition for jobs and the pressure on services and resources, in many instances prejudices, misperceptions and lack of interaction between groups also drives tensions. This will require not only identifying socio-economic development solutions to address resource pressure but also targeted initiatives to enable dialogues and confidence building between communities. Dedicated projects will promote social stability, mitigate tensions, and counter misconceptions by promoting among youth the values of dialogue, tolerance, peaceful communication and respect for diversity.

Core priority 2: Lebanon enjoys domestic stability and practices effective governance

Summary:

With regard to domestic stability and effective governance, the UN intends to support mechanisms which promote accountability and inclusive participation, including through elections and civil society engagement. The UN further plans to support the strengthening of core executive and legislative functions of the state, public administration, economic and financial management, national policy-development and statistical and planning capacities. Efforts will likewise aim at strengthening judicial and human rights institutions, improving prison administration, justice for children and addressing impunity. The advancement of gender equality and women as well as youth empowerment in political, social and economic spheres will also be prioritized.

Key challenges to be addressed

60. Existing tensions in Lebanon have been amplified as a result of evolving regional and domestic dynamics. Lebanon’s key state institutions have been paralyzed or function at reduced capacity as a result of these dynamics. If unaddressed, institutional weaknesses risk impacting Lebanon’s ability to provide adequate services to its people, manage economic challenges, and peacefully resolve political differences.

61. The level of accountability of the political leadership of Lebanon has come under increased scrutiny as a result of the civil society protests of 2015. These protests also reflect a central but unresolved issue of the level of inclusive participation and accountability in political life, and the very low levels of women's participation. This is amplified by widely spread public perceptions of corruption and elite-capture within Lebanon's body-politic.
62. In recent years, with the expansion of social media and internet use, there has been some remarkable progress by several public agencies with the support of the UN. The Ministry of Finance for example, implemented online tax declarations and provided publication of relevant budget information, public expenditure, and debt data. This important starting point for ensuring interest in and access to knowledge of the public sector, however, is hampered by the absence of a parliamentary approval of the annual general budget since 2005. At another institution, OMSAR, the UN supported the disclosure of government forms and application on a government portal as part of e-government services. The widespread use and implementation of information technology aims at creating a direct relationship between the public and public administrations and greater progress needs to be made in this regard.
63. The judiciary continues to face a number of challenges including delays in court cases, limited availability of legal aid and public defender programmes, access to justice to vulnerable groups, high court costs and the urgent need to strengthen and further establish a dedicated child friendly Justice system for children. In relation to the juvenile justice system there has been improvements on many grounds, including proposed reforms introduced through law 422/2002 and public statements on government's consideration to raise the age of criminal responsibility from 7 to 12 years, though these reforms still need to be adopted by parliament. According to successive CRC reports this remains an important priority to be addressed by the GOL. Other needs include reducing the number of children in pre- and post-trial detention, expanding the use of alternative measures to detention and the use of alternatives to formal judicial proceedings, and reducing the number of children in contact with the justice system. Finally, while government statements have repeatedly indicated readiness to introduce changes, challenges remain with regards to mandates and procedures of exceptional courts, such as the Military Court in particular concerns of arrest and trial of Minors under military jurisdiction, and of the Justice Council.
64. Under the Lebanese law and according to the Lebanese Constitution, men and women enjoy equal rights in social and economic spheres. Yet, gender parity has not been achieved in Lebanon. The 2015 Global Human Development Report ranked gender inequality index for Lebanon 78 out of 188. A wide gender gap still exists in accessing opportunities at the decision making, political, economic, and social levels. Women continue to face legal discrimination under personal status laws. Politically, significant underrepresentation of women in public and political life, political parties and labor unions remains. For instance, women's representation in parliament remains very low at 3.1 percent¹¹. Obstacles to women's access to the justice system are also of concern,

¹¹ Out of 128 parliamentarians, 4 are women

in particular lack of adequate legal aid and lack of knowledge and sensitivity of justice officials regarding women's rights.

65. Young people represent a large segment of the total population in Lebanon. Youth participation in decision-making processes remains limited. As a consequence, significant numbers of youth and adolescents feel disempowered or excluded. Under-investment in youth risks undermining social cohesion and represents a missed opportunity to build the social capital needed to foster the sustainable development of Lebanon.

Strategy of engagement

Outcome 2.1: Government's ability to improve the performance of institutions and promote participation and accountability increased.

66. UNSCOL will continue to employ the Secretary General's good offices and key statements to promote political consensus, dialogue, participation and preventive mechanisms in Lebanon and the region as well as key fora in the Security Council and the International Support Group for Lebanon. In this context, the UN will continue providing technical support for national dialogue on issues in the Taef Agreement and the constitution, such as: institutional effectiveness, security, the basis for elections (or potentially a new election law), decentralization. The UN will also provide support dialogue on mitigating the impact of the Syrian crisis on Lebanon. Lebanon has successfully organized peaceful and orderly municipal elections in the spring of 2016 and is expected to organize parliamentary elections in the summer of 2017. The UN will continue to provide technical support to the elections management body, the Ministry of Interior and Municipalities and to the other relevant institutions - such as the Special Commission on Elections Campaigns and the Constitutional Council - in order to ensure effective and successful elections according to international standards and best practice. Technical support will be also provided for the adoption of electoral reforms which will enhance the domestic application of international standards and best practice and which will promote more inclusive participation by women and youth. The final parameters of such assistance will be subject to the approval of the Focal Point for Electoral Assistance after conduct of a needs assessment. Advocacy (through the High Council for Children and line ministries) will also be carried out so that children are not involved in political violence that could occur during the electoral process. Strengthening accountability will be mainly through the promotion of parliamentary oversight, civil society organizations' engagement in legislative and public policy consultations, and through decentralized oversight and accountability monitoring.
67. The UN will continue to respond to government requests for policy and technical support as needed, including formulation and implementation, modernization and automation of business processes reform and specialized technical assistance within an institutional capacity development framework. Key priority areas for this assistance include: capacities for developing and implementing fiscal, economic and social policies. Government and line ministries will also

be supported in their development of policies and plans vis-à-vis displaced Syrians, in line with the Lebanese constitution and relevant laws, as well as Lebanon's international obligations.

68. The UN will continue its support to the Office of the Minister of State for Administrative Reform (OMSAR) for the implementation of the 2012 National Administrative Reform strategy. Support will be provided for the implementation of specific plans related to strategic planning, simplification of procedures, e-government, human resources development and ICT.
69. The UN will support relevant government and non-government counterparts to operationalize the National Youth Policy through the development of an Action Plan with clearly defined and costed activities, responsible institutions for implementation and a monitoring framework to measure progress. Support will be provided to the Ministry of Youth and Sports to develop adequate institutional capacity and lead the inter-ministerial mechanism that will be mandated to develop the Action Plan and monitor its implementation by responsible institutions both at central and local level in close collaboration with civil society organizations. To promote and reaffirm meaningful participation of youth and adolescents in decision making process, without any difference and exclusion, as well as in building of a sense of active citizenship and social responsibility, the UN will support the establishment and empowerment of youth mechanisms/councils/clubs as fora for direct civic and policy engagement.
70. Finally, the UN will solicit all possible support for the implementation of the National Statistical Master Plan in cooperation with the Central Administration for Statistics (CAS). At the same time, work will be initiated on updating the Master Plan towards the development of a new National Strategy for the Development of Statistics (NSDS), following the methodology and guidelines developed under the auspices of the Partnership for Statistics in 21st Century (PARIS21). The UN will provide technical assistance to CAS in undertaking the surveys and compiling relevant economic and social statistics, disaggregated according to factors such as sex, age, region and migratory status in a functional integrated system of information.

Outcome 2.2: State has institutionalized mechanisms for enhanced protection of human rights, rule of law and access to justice for all people in Lebanon.

71. In November 2015, the government of Lebanon reviewed its human rights record with the Human Rights Council and received 219 recommendations, of which 128 were accepted and 89 recommendations were noted¹², to enhance the situation of human rights in the country. The government also, within the same year submitted several reports to treaty bodies including ICESCR, CEDAW, CERD and CRC. Nonetheless, according to international reports, human rights violations persist in some police stations and detention facilities.

¹² See page 2 of the Report of the Working Group on the Universal Periodic Review Lebanon, Addendum, Views on conclusions and/or recommendations, voluntary commitments and replies presented by the State under review (A/HRC/31/5/Add.1) available on <http://www.ohchr.org/EN/HRBodies/UPR/Pages/LBSession23.aspx>

72. The UN will work closely to support national counterparts in their implementation of the National Human Rights Plan of Action and enhance the country's responsiveness to recommendations made by international human rights mechanisms by supporting the establishment of a National Mechanism for Reporting and Follow-up to work closely with human rights mechanisms and follow up on UPR and treaty bodies' recommendations. Furthermore, the UN will advocate for the adoption of the draft law to establish a National Human Rights Institute (NHRI) in line with Paris Principles as well as a National Preventive Mechanism (NPM) to address impunity in line with the guidelines developed by the Subcommittee on Prevention of Torture and Other Cruel, Inhuman or Degrading Treatment or Punishment. In addition, the UN will support civil society members in their efforts to support the country's implementation of UPR recommendations as well as develop and implement training programmes on international Human rights for law enforcement agencies and the judiciary. Among the legal measures supported would be those facilitating timely and affordable access to justice for vulnerable groups, including refugees, migrant workers, poor Lebanese and potential victims of trafficking.
73. The UN will continue to support the implementation of the law provisions on trafficking in persons (164/2011) and will support national counterpart in developing and implementing institutional referral mechanism for potential victims of trafficking. The UN will strengthen the capacity of the judiciary including law enforcement in dealing with cases on trafficking in persons. In addition, the UN will further support civil society in providing adequate protection services for potential victims of trafficking.
74. Deprivation of liberty for children must be exceptional and for the shortest period of time and all procedural safeguards must be in place to protect the child in criminal or civil court proceedings. As a priority, the UN will support government to reform the justice system for children, so as to appoint specialized judges for children (both offenders and victims) provide training and child friendly facilities within or outside court structures, work on preventive measures and promote diversion and restorative justice as a rule.
75. In accordance with national laws and international principles and practice, the government will continue to be supported in its efforts to register the birth of newborn babies in Lebanon, including foreigners.

Outcome 2.3. Institutional mechanisms and policies strengthened for improving the legal status of women, eliminating gender based violence and promoting gender equality.

76. The Concluding Observations on the combined fourth and fifth periodic reports of Lebanon by the Committee on the Elimination of Discrimination against Women (November 2015) will constitute the basis for determining key strategic actions to be supported by the UN system in Lebanon to improve the legal status of women.
77. Under this framework, the UN will support the Government of Lebanon to harmonize its laws with international standards for gender equality and women's empowerment, including CEDAW. The UN will also work with NCLW and civil society to enhance capacities to promote and mainstream gender equality and empowerment of women and girls in various levels and sectors.

The UN will support the implementation and reporting on CEDAW recommendations and support national capacities for establishing an action plan on SCR 1325. Finally, national capacities including those of NCLW will be strengthened for establishing and operationalizing a gender audit system.

78. While the UNSF has an outcome dedicated to gender equality and eliminating gender based violence, gender issues will be meaningfully mainstreamed across programme activities related to other outcomes during implementation.

Core priority 3: Lebanon reduces poverty and promotes sustainable development while addressing immediate needs in a human rights/gender-sensitive manner.

Summary:

In support to socio-economic stabilization and sustainable development efforts, the UN will pursue a 'dual-track' approach that focuses both on mitigating the impact of the Syrian conflict and addressing pre-existing development constraints. UN support to address these socio-economic challenges will be provided in three areas. There will be a focus on strengthening productive capacities and generating inclusive growth, improving equitable access and delivery of social services and promoting environmental protection and effective natural resource management.

Key challenges to be addressed

79. Lebanon's social and economic growth has been significantly impacted by the conflict in Syria, which in turn have exacerbated pre-existing development constraints. Economic stagnation, deepening poverty and vulnerability, a weak fiscal position and immense debt burden undermine the country's stability and weaken its ability to manage political and other threats to peace.
80. The conflict in Syria has stunted economic growth and development trajectories. Direct consequences of the conflict in Syria include: interrupted regional trading activity, reduced investments due to security concerns, and increased macro-economic volatility. The presence of over 1 million Syrian refugees registered with UNHCR – out of which over 500,000 are children¹³ - has increased demand on social services, which lack the fiscal requirements and capacities to meet increased needs. The distribution of the displaced Syrian population in areas with high concentration of Lebanese poor has also compounded an already problematic economic situation, increasing poverty and social tensions¹⁴. Since 2011, growth in Lebanon has declined.

¹³ Lebanon Crisis Response Plan 2015-16 (Annexes): Vulnerable Lebanese, Displaced Syrians and Palestine refugees under total people in need economically, socially and legally vulnerable.

¹⁴ See World Bank and UN (2013) Lebanon Economic and Social Impact Assessment of the Syrian Conflict and World Bank (2015) Lebanon - Promoting poverty reduction and shared prosperity. A systematic country diagnostic

The World Bank has estimated that Lebanon has incurred losses of \$13.1 billion since 2012 out of which \$ 5.6 billion in 2015 alone. At present, 170,000 Lebanese risk poverty, in addition to the current 1 million living below the poverty line¹⁵, out of which 470,000 are poor Lebanese children¹⁶. An estimated 260,000 to 280,000 of the 450,000 registered Palestine refugees in Lebanon depend on UNRWA service provision. 65% of Palestine refugees from Lebanon live in poverty, with 3% in extreme poverty, and 90% of Palestine refugees from Syria live in poverty, with 10% living in extreme poverty¹⁷.

81. Lebanon's development model has been characterized by striking inequalities, deep 'pockets' of persistent poverty, and weaknesses in the allocation and provision of services. Together with a significant debt burden and volatile macro-economic environment, these have resulted in productive sectors that are inefficient and under-performing, a difficult business and investment climate, and labor markets that cannot provide jobs in sufficient numbers. An estimated 220,000-324,000 Lebanese, primarily unskilled youth, were unemployed between 2011-2014, doubling the unemployment rate to above 20 percent¹⁸.
82. Lebanon has a large informal economy, but exact statistics are not available. Before the mass influx of Syrian nationals into Lebanon, the work informality ratio was estimated to account for 44 per cent, with significantly higher levels in agriculture (92.4 per cent) and construction (80.7 per cent)¹⁹. The World Bank estimates that informal work as a share of the labour market has increased by 10 percentage points vis-à-vis prior to the mass influx²⁰. The increasing informality has resulted in decreasing real wages and downward spiraling working conditions. Current wages in the informal sector are significantly lower than the Lebanese minimum wage of USD 450 per month. Minimum wage requirements for formal employment therefore are a considerable bottleneck for formalization. The transition to formality would also require legislative changes. For example, seasonal labour in the agriculture sector is not covered by the labour law and farmers are not recognized as enterprises.
83. The discrepancy in access to quality health care that was observed before the Syrian crisis, at the detriment of the poor and vulnerable populations in Lebanon has been accentuated by the Syrian crisis. It is estimated that 28% of the Lebanese and at least 70% of the displaced Syrians are vulnerable and may require subsidy for accessing timely and adequate health care²¹.

¹⁵ World Bank and UN (2013) Lebanon Economic and Social Impact Assessment of the Syrian Conflict

¹⁶ Lebanon Crisis Response Plan 2015-16 (Annexes): Vulnerable Lebanese, Displaced Syrians and Palestine refugees under total people in need economically, socially and legally vulnerable.

¹⁷ AUB (2016) Survey on the socioeconomic status of Palestine refugees in Lebanon (forthcoming)

¹⁸ World Bank and UN (2013) Lebanon Economic and Social Impact Assessment of the Syrian Conflict

¹⁹ ILO, S. Ajluni and M. Kawar (2015), Towards Decent Work in Lebanon: Issues and Challenges in Light of the Syrian Refugee Crisis. This report cites data from the Central Administration of Statistics (CAS): Both the CAS Household Survey 2004 (Labour Force Module) and the CAS Multiple Indicators Cluster Survey 2009 (Labour Force Module) yield a 44 per cent informality ratio using the ILO's definitions and excluding employers.

²⁰ World Bank (2013), *Lebanon: Economic and Social Impact Assessment of the Syrian Conflict*.

²¹ National Poverty reduction Program estimates and UNHCR Vulnerability assessment of Syrian refugees in Lebanon 2015

84. Lebanese health facilities (hospitals and PHC centers) have been overburdened by a sudden increase in utilization of up to 50% in some cases²², greatly affecting their infrastructure and financial sustainability. While Lebanon stays polio-free, measles immunization coverage rates remain constrained. Supporting the health facilities to cope with the case load, and improving the resilience of the health system in general, is crucial for service delivery. Palestine refugees are provided primary health care services and support for hospitalization through UNRWA.
85. The World Bank Assessment (2013) identifies a deficiency in quantity through water supply networks in Lebanon leading to chronic water shortages across the country. Water quality, including increasing salinity due to over extraction of groundwater and bacteriological contamination of 33% of household supply (in 2004)²³ due to unsafe waste discharge, is simultaneously deteriorating as evidenced in GoL MDG 2013 report. Although network coverage is high (80%), 'unaccounted for' (leakage) water averages 48% and supply continuity is low²⁴. Sanitation services are failing causing unsafe water supply and environmental health problems in children. The wastewater network coverage of 60%²⁵ is higher than the average of the region, however treatment of wastewater is much lower with less than 8% of total consumed.
86. The alarming water and sanitation situation has already had health impacts on children, with dysentery, Hepatitis A and typhoid being the leading types of water-borne diseases within children under five prior to the Syrian crisis. The Ministry of Public Health has observed increasing incidences of Hepatitis A over the last 2 years.
87. The June 2010 Policy Paper for the Electricity Sector adopted by the GoL, identified the deficit in installed generating capacity, reaching 61% only of the instantaneous peak demand in summer. The Policy Paper recognized the critical needs of the electricity sector and outlined policy, investments and reforms aiming at increasing the level and quality of electricity supply, managing demand growth, decreasing the average cost of electricity production, increasing revenues and improving sector governance – all aimed at ultimately improving service delivery and reducing the fiscal burden that the sector places on public resources.
88. Lebanon is experiencing increasing poverty rates and a deepening of socio-economic disparities, partly as a result of the Syrian crisis. Since the start of the crisis, the populations affected in Lebanon have experienced a gradual shrinking of space for livelihoods and income-generation, translating into the poor and displaced families' inability to secure their basic needs and access social services. The pressure on the housing market means that the most vulnerable have limited access to affordable and adequate housing, and consequently that high percentages are resorting to substandard and overcrowded dwellings in the urban centres and the existing Palestine refugee camps.

²² MOPH utilization records, 2014, 2015

²³ Lebanon Millennium Development Goals report 2013

²⁴ National Water Sector Strategy, 2010, (Resolution No.2, date 09/03/2012)

²⁵ National Water Sector Strategy, 2010, (Resolution No.2, date 09/03/2012)

89. The socio-economic profile of the populations displaced from Syria, as well as the income poor Lebanese share similarities: lack of financial means, inability to meet basic needs and depletion. In addition, the vulnerabilities of the displaced are further impacted by their displacement, and lack of social network. As a result, these socio-economically vulnerable households are more reliant on social and basic assistance.
90. Food insecurity is a growing concern. According to the UN's recently published Review on Food Security and Nutrition 49 percent of Lebanese have reported being worried about their ability to source enough food, while 31 percent say they were unable to eat healthy and nutritious food over the course of a year. Displaced Syrians are almost completely dependent on food aid and in 2015, 11% were food insecure. Agriculture has fallen from as high as 23 percent of economic output at the end of the last civil war to make up only 4 percent of GDP today, indicating that the sector is being left behind. There is no national infant and young child feeding (IYCF) policy to guide optimal child nutrition during the first two years of life. Exclusive breastfeeding rates are low among the Lebanese community (25%) and among Syrians registered as refugees by UNHCR (34%)²⁶.
91. Socio-economic vulnerabilities, exacerbated by a protracted emergency, translated, according to UN reports, into an increase in the levels of violence against children and women and a reliance on harmful practices, such as child marriage and engagement of children in the worst forms of child labour including armed violence²⁷, as coping mechanisms²⁸, as well as increased risk of traffickers preying upon the heightened vulnerability of populations. The Government of Lebanon constantly reaffirms its commitment to combat violence against children and women, in accordance with the applicable international and national law. Joint efforts between the UN and Lebanon are needed in order to remedy this situation.
92. Children and youth with disabilities are at high risk of violence, discrimination and exclusion. These risks are exacerbated in gradual emergency settings and when there are no targeted interventions in place to aim at reducing inequities for those children living with disabilities. In Lebanon, a data gap on disability persists, limiting targeted interventions aimed at improving the situation for children and youth living with disabilities.
93. In terms of education, almost 42% (443,484 children)²⁹ of refugee children are aged between three and 18 years. An estimated 50,000 Lebanese (28,000 boys and 22,000 girls) and 184,000

²⁶ UNICEF (2016), *Baseline Survey*.

²⁷ Trends of association of children with armed violence or conflict have been reported in the paragraphs on Lebanon of the UN Secretary-General's Annual Reports on Children and Armed Conflict covering 2009 (A/64/742-S/2010/181), 2010 (A/65/820-S/2011/250), 2012 (A/67/845-S/2013/245), 2013 (A/68/878-S/2014/339), 2014 (A/69/926-S/2015/409), 2015 (A/70/836-S/2016/360)

²⁸ Based on evidence collected by UNICEF in conformity with its mandate.

²⁹ UNICEF (2016), *Baseline Survey*.

displaced Syrian children (90,000 boys and 94,000 girls)³⁰ in primary school age (6-14 years) remain out of school.

94. The challenges facing the environment in Lebanon remain numerous and vary across thematic areas. Additional difficulties were faced as of 2011 due to an increase in demand on natural resources including impacts on water and wastewater, solid waste, air quality, land use and increased pollution loads. Lebanon's water resources are under stress due to several factors: unsustainable water management practices, increasing water demand from all sectors, water pollution, and ineffective water governance. Forested areas (representing 13% of land cover³¹) are threatened by deforestation despite playing an important watershed and climate mitigation role. The burden on national institutions that have a direct role in environmental issues, particularly the Ministry of Environment, Ministry of Energy and Water and the Ministry of Interior and Municipalities, also grew tremendously, given the new challenges faced in the sector
95. Lebanon's past integration policies have brought some economic benefits to the country. For example, Lebanon's exports grew at an annual average rate of 13.8% over the period 2000-2013³². However, some challenges remain. Widespread restrictions on foreign firm's operations have been coupled with undue regulatory constraints severely limiting competition. Lebanon's integration with the global economy remains superficial and limited, both in quantities and sophistication of exports, undermining competitiveness.

Strategy of engagement

96. *The activities proposed by the UN in this section will be guided by existing Ministerial sectoral plans and strategies, the National Physical Master Plan as well as by the newly adopted Sustainable Development Goals (SDGs). It also reflects activities presently being undertaken by UN agencies under the Lebanon Crisis Response Plan (LCRP) that are likely to be continued under future joint Government and UN crisis response plans in the coming years. The activities proposed below aim at supporting all vulnerable populations in Lebanon, with particular focus on the Lebanese. The approach focuses on building the resilience of the target group at every level. The UNSF results and resource framework below outlines the relevant delivery frameworks to which activities aim to contribute.*

Outcome 3.1. Productive sectors strengthened to promote inclusive growth and local development especially in most disadvantaged areas

97. In light of the current stagnation of the Lebanese economy, the UN will aim to promote an enabling environment for increased production. This will be achieved by contributing to capacity

³⁰ UNICEF (2016), *Baseline Survey*.

³¹ State and Trends of the Environment Report, 2010.

³² World Bank Lebanese Economic Monitor - Fall 2015 and ESCWA (2015) Assessing Arab Economic Integration Report: towards the Arab Customs Union

building of business support entities that provide services such as financial support, business development services, technology input and employment services. The UN similarly aims at maximizing its support in improving productivity, competitiveness and employment potential by supporting optimization of value chains, business management services, workplace improvements as well as job creation programmes in vulnerable areas. There will be a particular focus on SMEs and start-ups in these efforts, to ensure increased entrepreneurship and economic activities in poor or rural areas and in sectors which have a large potential for growth. Support will also be provided in enabling the country's manufacturing sector to become the catalyst for job creation, economic inclusion and spearheading socio-economic suitability among all cohorts of the population in Lebanon. Sustained investment in infrastructure, technology and innovation will be crucial drivers for the economic growth, and inclusive and sustainable industrial development.

98. In line with the statement of intent made by the GoL at the London conference in February 2016 and subject to agreement with national counterparts, the UN Strategic Framework will also aim to support the most vulnerable with improved access to income generating activities and job creation in conformity with GoL policies and Lebanese laws and regulations.
99. The vast majority of jobs created will be temporary and targeted at the most vulnerable sectors of the populations in Lebanon. Furthermore, the strategy will be to employ the excess labour available in the market in the development and rehabilitation of assets that benefit the Country employing labour intensive methodologies. Efforts will be made at increasing female participation via activities that can be done in the home, and also seeking other activities where women can be employed without upsetting cultural sensitivities.
100. In addition, the UN will also focus on strengthening local economic development through a comprehensive approach for attracting new investment opportunities that foster long term employment for Lebanese in close collaboration with national institutions, the private sector and the international community.
101. The UN will support the government to establish and sustain the activities of the National Technology Transfer office (NTTO), in coordination with the National Council of Scientific Research (CNRS). This office would allow the industrial and production sectors to seek solutions from national research centers and academic institutions and would help universities and research institutes to commercialize their patents and innovative solutions in industry.
102. The UN will also assist line ministries to enhance the innovation ecosystem. This assistance could be expressed by showcasing best international and regional practices in innovation, and by providing policy recommendations on the needed amendments to current legal framework to support the deployment of innovation for socio-economic development.
103. Palestine refugees have gained legal access to employment in some sectors in Lebanon. Employment challenges and legal limitations however remain for Palestine refugees. UNRWA will seek to enable access to financial services and create employment opportunities, a part of the services it provides, including through employment service centers and micro-finance initiatives.

104. The UN will ensure that an appropriate enabling environment specific to the agricultural sector in collaboration with the Ministry of Labour to promote: the free movement of people and goods; enhanced legal flexibility for the recruitment of agricultural workers; legal protection for women and children; and establishment of a minimum wage for all agricultural workers yielding higher value added to the sector. Beyond agriculture, the UN will focus on enabling and supporting growth in other sectors with a large growth potential, including the creative and cultural industries as well as fisheries and other under-utilized resources (while ensuring a sustainable approach to natural resources).
105. The UN, through its specialized agencies, will support the Government of Lebanon in promoting the development of inclusive and sustainable industrial development (ISID). This will be done by focusing on the establishment of new industrial parks and supporting the rehabilitation of the existing one, especially in the most vulnerable areas; by promoting industrial SME competitiveness in promising sub-sectors of the economy; assisting selected value chains in the agro-industrial sector, to comply with food safety requirements and by increasing the participation of women and youth in productive activities; developing creative industries clusters as a mean to create new jobs and economic opportunities; and by facilitating the promotion of manufacture innovation, specialization and integrated production. Additional technical assistance will be provided to GoL to improve nation branding through media support.
106. Initiatives will be undertaken in the field of food safety and control to enhance the capacity of relevant GoL entities to conduct risk assessments and monitor food safety standards.
107. Support will be provided to Government Ministries for a range of activities promoting local growth. This includes the development of local economic development plans, and establishment of economic free zones, particularly in the most vulnerable areas.
108. To underpin the efforts to promote local and inclusive growth, the UN will also support the Government in developing infrastructure critical to local economic activities, including for example roads, electricity, and waste and water management facilities.
109. To bolster Lebanon's international trade, the UN will be delivering support to the GoL on trade capacity building. The assistance will take the form of policy and strategy support as well as activities aimed at lowering technical barriers, boosting national economic competitiveness and creating a more conducive international trade ecosystem for manufacturing products made in Lebanon. The UN will deploy technical assistance support aimed at enabling SMEs to access global supply chain networks; and increasing the ability of SMEs to compete on export markets.
110. The UN will support the government to re-assess its global integration strategy by accelerating its economic integration with its biggest trading partners, building on recent positive steps such as the 2014 MoU with MERCOSUR. It is important for the government to assess the relevance of pre-existing regional FTAs, deepen ties with other key partners in the region, or consider agreements with potential new partners. Currently, three main areas of deepening the integration of Lebanon's economy in the global and regional levels are being considered. The first relates to the Arab Customs Union. The second is the current new wave of partnerships suggested

by the EU to most of its partners involved in the Euro-Med partnership in the form of a Deep and Comprehensive Free Trade Agreements (DCFTA). The third channel of integration is through the accession to the WTO which will ensure Lebanon to access a large number of markets with a maximum of transparency. The UN will support the government in the analysis of potential costs and benefits of selecting each option separately or in a complementary fashion to assess the challenges and opportunities linked to these new trade agreements; identify the best options of an integration strategy looking forward, and develop policy options. The UN will support the government in the analysis of potential costs and benefits related to various options for the integration of Lebanon's economy at global and regional levels (Arab Customs Union, EU and WTO) linked to new trade agreements and support the development of policy options.

111. The UN will support the Government in developing its national comprehensive development plan to ensure integration of the 2030 Agenda by providing support to the government in reviewing the draft national development plan, and in providing advisory services to the Government as a whole, line ministries and relevant entities on topics related to the 2030 Agenda.
112. The UN will support GoL in the following areas related to resilience: strengthening policy, institutional and legal frameworks for disaster management, risk assessment, preparedness for response (early warning and contingency planning) and community based disaster risk management.

Outcome 3.2. Improved equitable access to and delivery of quality social services, social protection and basic assistance.

113. The United Nations aims to promote equitable access to social services, protection and basic assistance by supporting the government of Lebanon to establish and implement a national Social Protection Floor (SPF). Social Protection Floors are nationally defined sets of at least basic social security guarantees, ensuring for those in need access to essential health care and to basic income security, which together secure effective access to goods and services, defined as necessary at the national level. UN assistance will also be provided in relation to key governmental policies as well as ministerial priorities and strategies, including by the Ministry of Public Health, Ministry of Education and Higher Education, Ministry of Energy and Water, the Ministry of Social Affairs, the Ministry of Environment, Ministry of Labour and the Ministry of the Interior and Municipalities.
114. Acknowledging the outlined challenges, the UN aims to provide support to the host government in increasing access to and quality of public primary health care at the primary health care (PHC) centers – extending to Lebanese as well as displaced populations. This involves supporting government to expand the network of existing PHC centers that meet the Ministry of Health's criteria in terms of the scope and quality of services delivered. The UN supports the Ministry of Public Health and its NGO partners to improve the capacity of PHC centers to provide quality services through additional staffing, procurement of medications, and other health commodities, vaccines and medical equipment and training of health care providers.

115. The UN will continue supporting access to displaced from Syria for hospital care, with focus on life saving interventions and mother and child care.
116. To enhance the prevention and control of communicable disease outbreaks the UN with health partners will support efforts by the government to reinforce the national surveillance system through strengthened district level management of communicable disease surveillance and the establishment of enhanced sentinel surveillance sites for outbreak prevention and control. The UN will also continue to provide continuous support to the MoPH immunization and polio program in order to keep Lebanon polio free and prevent outbreaks of vaccine preventable diseases.
117. The UN will support the Ministry of Public Health and other concerned sector Ministries through continued policy dialogue, promoting inter-sectoral coordination and strategic public-private partnerships. The UN will with national and international partners support capacity development for monitoring of public health and will support the UHC program of the MoPH, with special attention to exploring and implementing optimized health financing solutions.
118. In continuation of previous efforts, UNRWA will provide essential services to protect the health of Palestine refugees and reduce the disease burden – as the provider of first resort of the majority of these services to them.
119. Responding to Lebanon’s commitment to achieving inclusive and equitable quality education and lifelong learning for all by 2030 (SDG4/Education 2030 Agenda), the UN envisages a more strategic and coherent approach with the Ministry of Education and Higher Education (MEHE) to achieve its national goals as set in the education sector plan (RACE II). Given the continuing and protracted Syrian humanitarian crisis and its significant impact on the provision of relevant, quality education in Lebanon, the UN will scale up its support by increasing equitable access to education, by improving the quality of education services delivered, and by strengthening the systems and policy environments that can sustainably support the education system and its stakeholders.
120. In terms of access in instances where formal public education may not be accessible for children, MEHE with support from the UN will facilitate the standardization and regularization of non-formal education programmes and vocational training as a pathway to re-integrate these children into the formal certified/accredited education system – into pre-primary, primary, secondary, and vocational education – and increase youth employability. The UN, jointly with key stakeholders, will support the MEHE address systemic barriers and negative externalities that hinder access to education opportunities; via the full/partial subsidy of learning fees (school tuition, NFE enrolment fees) and education-related costs (stationery, books, transportation) and the expanded availability of accessible and conducive learning environments (schools and NFE learning spaces). As important, will be the UN’s coordinated approach to support the MEHE and its institutions to facilitate inclusive access to those children with physical or learning disabilities.
121. In terms of quality, the UN also aims to ensure the right of all children and youth to relevant quality education that enhances their learning outcomes, prepares them for life, for further

studies, and moves them towards a gainful employment. The UN will also support the improvement of the quality of education provided to children and youth by: making it more connected and relevant to the community, supporting the technical and pedagogical capacity development of teachers, educators, school administrators, and the school-community, institutionalizing the adoption of a whole-school approach and promoting vocational training in a sustainable manner. Finally in terms of system strengthening, the UN will support MEHE in strengthening the education system by employing an evidence-informed approach to governance and management of the sector, undertaking advocacy for equity and equality, engaging in policy dialogue, enhancing institutional capacities to achieve national education goals, and building a more resilient national education system that promotes lifelong learning for all.

122. The issue of access is of particular importance with regards to Palestine refugee children – an issue which the UN seeks to address through the UNRWA, and its mandate to serve Palestine refugees, as well as the support of other UN agencies. UNRWA’s network of schools represent the main educational system for Palestine refugees in Lebanon, and UNRWA will continue to provide education for Palestine refugee children, including those displaced from Syria. In terms of quality, the UN also aims to ensure the right of all children and youth to relevant quality education that enhances their learning outcomes, prepares them for life, for further studies, and moves them towards a profession.
123. The social exclusion of children with disabilities is a violation of their human rights and a significant equity gap. Failure to respond will exacerbate the situation and lead to later-stage interventions that will be less effective and more costly. Until 2016, stakeholders had largely overlooked this issue. UN will work across its programme outcomes to gather robust data and mainstream the needs of children and youth with disabilities, planning specific interventions to address their needs during the 2017-2020 period.
124. Effort will be undertaken to support the Government in providing a comprehensive response to delivering safe water to the most vulnerable populations of Lebanon, including poor and urban neighborhoods. Water interventions systematically ensure that the water delivered is fit for purpose, can be properly treated, and is properly stored. Key interventions by the UN will include providing safe water in schools, health facilities and informal settlements, and implementing wastewater projects in priority areas where wastewater risks contaminating the water source of vulnerable communities. To ensure a sustainable approach, efficiency awareness campaigns to rationalise household and industrial water consumption will also be implemented. Capacity support will also be provided at the central and regional levels to improve water data, water management, planning and coordination.
125. In the Palestinian refugee camps, the UNRWA will continue to support adequate quality and quantity of water supply to camp inhabitants and apply necessary precautions to avoid floods in camps. Over the course of the UNSF, UNRWA will seek to support projects addressing water resource, supply and networks, sewerage networks and water drainage in camps that suffer from deteriorated environmental infrastructure conditions.

126. The increasing socio-economic vulnerability of the population in Lebanon has increased the need to strengthen existing social safety net mechanisms and develop new ones for the displaced populations. The National Social Development Strategy, developed by the Ministry of Social Affairs, has not yet been fully developed into a coherent national social protection policy encompassing the various components of social insurance and social assistance. The UN aims to support the review of the National Social Development Strategy in line with the Social Protection Floor and the strengthening of national capacities for its implementation. The UN will also support a review of the legal framework of the agricultural sector to define options for its structure to ensure equal access to social protection benefits and decent work conditions.
127. To address critical day-to-day and seasonal needs, the UN will continue to support government institutions and international and national organizations to provide support to Lebanese and non-Lebanese families and their children. Where there is no direct Government intervention, the UN will continue to support directly the most severely economically vulnerable of the refugee populations (Syrians and Palestine refugees) through programmatic interventions and direct cash assistance support, including a particular focus on women and female headed households. The approach is to assist households in meeting their basic needs in a manner that allows choice and promotes dignity. The UN will ensure that the Government of Lebanon is duly informed, through the agreed mechanisms, of the details of these interventions.
128. The UN will work towards strengthening the national policy framework and institutions to put in place safety nets and other social transfers by building upon existing systems, such as the National Poverty Targeting Programme, for the progressive realization of a national Social Protection Floor. In addition, the UN aims to strengthen the National Social Security Fund (NSSF) so as to ensure adequate and sustainable benefits for those covered by the NSSF (just 593,834 Lebanese as per NSSF statistics of 30/9/2015) and the rest of the most vulnerable Lebanese population. The UN will also support national capacities for the provision of adequate public housing for the most vulnerable through the development of an affordable housing scheme.
129. The Social Protection Floor includes both NPTP (social safety net) and NSSF (national insurance), but also health insurance, etc. as part of nationally-defined sets of basic social security guarantees which seek to secure protection aimed at preventing or alleviating poverty, vulnerability and social exclusion. Under this UNSF, the UN is looking to assist Lebanon to define these guarantees which ensure at a minimum that, over the life cycle, the disadvantaged have access to essential health care and basic income security.
130. In accordance with Lebanese laws and in full transparency, social safety nets will be extended to refugees in the sense of a basic set of essential social transfers, in cash and in kind, to enhance food and nutrition security, provide minimum income security and ensure equal access to essential services (including education and health care) without compromising safety, preventing and mitigating any emerging protection risks. To improve living conditions for Palestine refugees, the UNRWA aims to rehabilitate shelters and support adequate standards of housing for inhabitants in refugee camps. With the support of the Government of Lebanon and donor partners, the UN aims to reconstruct the Nahr El Bared Palestine refugee camp.

131. In the past years, in partnership with key line Ministries and civil society, UN agencies have focused on the strengthening of the core building blocks of the child protection (CP) system in Lebanon to address the fundamental child protection and gender-based violence (GBV) issues affecting children and women prior to the crisis, namely violence in the home, school, institutions, and communities.
132. UN agencies will continue to work with the main government counterparts (MOSA, MEHE and MoPH) and civil society to advance the child rights agenda and pursue the national investments needed in implementing child protection standards. During emergencies, access to free, adequate, and quality services (including psychosocial, medical, legal, safety and protection services) will be provided.

Outcome 3.3. Lebanon has improved environmental governance.

133. Given that Lebanon has a fragile natural environment particularly in terms of biodiversity, forest management, land management and water ecosystems, focus on the protection of these resources will remain a priority. In addition, the reduction of pollution to water, air and soil from power plants, generators, industrial and other sources will be tackled through various programmes in order to meet both national and international obligations and legislation.
134. UN specialized agencies will support the effective management of solid waste and the improvement or protection of water quality. Environmentally sound approaches that promote waste reduction, recycling and/or proper management of solid waste, including medical waste, are planned.
135. Support will also be provided to the government in putting a mid- to long-term strategy on integrated waste management in place. In doing so, water, air and land resources will be better protected.
136. In Palestine refugee camps UNRWA will continue to collect and dispose of solid waste, while looking for mechanisms to reduce waste and recycle. UNRWA will build awareness of refugees on water use, solid waste management, and ensuring a healthy environment.
137. Support to meet the adaptation and mitigation needs of climate change on the country will be provided through various interventions (namely loans and grants). The application of renewable energy technologies in the productive sectors as well as its use at the household and communal levels will be promoted as a means to increase access to green sustainable energy. These approaches feed into the overall strategic approach of working towards a low carbon economy that is promoted by the UN agencies and in line with the Sustainable Development Goals.
138. The protection of coastal zones will also be targeted taking into account environmental hotspots that will become more sensitive as a result of climate change.
139. All UN interventions will include direct policy and technical advisory support to the national government and regional and local authorities.

5. Principles of partnership

The following section describes the key principles of partnership within the UN and between the UN, the GoL and other stakeholders for the delivery of the UNSF.

140. The successful implementation of the UNSF will need to rely on strong partnerships with the Government of Lebanon and a variety of national and international stakeholders. Partnerships shall be based on the following broad principles:
- Alignment with national priorities, including the national SDG agenda/roadmap (when adopted), and in conformity with Lebanese laws and regulations.
 - Promotion and support for the strengthening of national/government implementation capacity
 - Adherence and promotion of UN values and principles
 - Promotion of a strong human rights and gender equality and women's empowerment perspective
 - Promotion of integrity, and in particular transparency and accountability, in fulfilling mutual commitments
 - Adherence to international aid effectiveness principles and commitments
 - Regular monitoring of collaboration and coordination to determine the success of the partnership(s)
141. Internally within the UN, strong emphasis will be placed on joint assessments and collaborative programming and support by UN agencies with a view to catalyzing joint efforts and maximizing the results and impact of UN support. In particular, joint programming will be promoted and undertaken in areas of convergence of UN agencies' mandates and priority thematic sectors (see section 6). Economies of scale and efficiency improvements within the UN system will also be sought through identification and further investment in common services and operations. The UNSF will also provide a framework for joint resource mobilization by the UNCT by facilitating joint priority-setting and development of innovative joint proposals in areas where the UN is best positioned to deliver. A risk analysis mechanism will be established to analyze the effects of UN financial flows and disbursement mechanisms in country in view of increasing accountability and minimizing risks.
142. Engagement with Government will involve the central state institutions including Parliament and partners at decentralized level, including municipalities, union of municipalities, governorates and community organizations. The relationship with central government counterparts, notably the Prime Minister's Office (PMO), Ministry of Foreign Affairs and the Council on Development and Reconstruction (CDR) will be developed as the central coordination platform and support will be provided accordingly. Inter-sector partnerships to achieve the outcomes in the UNSF may be developed.

143. The UNSF will also be used as the basis for strengthening partnership with other multilateral, regional and bilateral actors present in Lebanon, including notably the World Bank and the European Union, where the UN will seek to complement and align its efforts and technical capacities to maximize strategic, programmatic and operational synergies.
144. Efforts will be made - in coordination with GoL - to strategically develop partnerships with the private sector. Within the context of implementation, at sector or output levels, partnerships with civil society will also be developed.

6. Coordination and management

The following section describes the suggested coordination arrangements within the UN and between UN and other stakeholders for the delivery of the UNSF.

145. The UNSF will constitute the main reference document for the United Nations system in Lebanon. To ensure the coordinated, coherent and efficient implementation of the objectives defined in the strategy, the UN – in partnership with the Government of Lebanon – will utilize various coordination and delivery mechanisms as outlined in this section.

Oversight

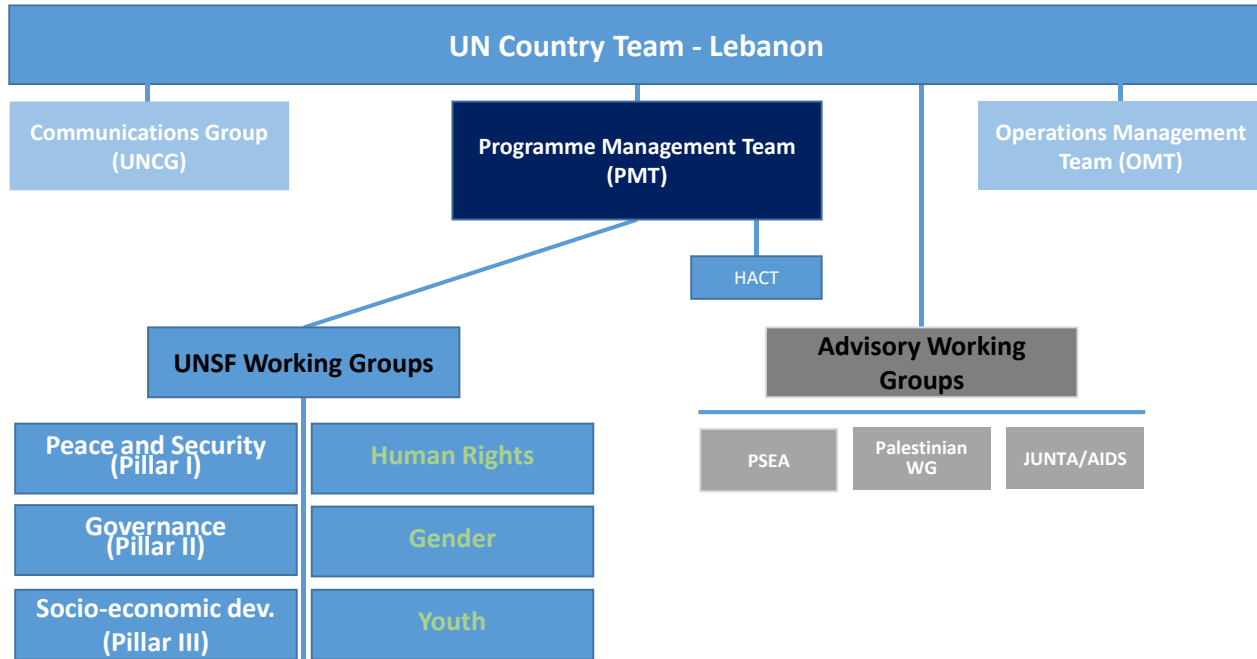
146. The overall responsibility for the UNSF will lie with the Prime Minister of Lebanon, supported by the line ministries and the UN Special Coordinator for Lebanon supported by the Deputy Special Coordinator/UNRC/HC. A joint mechanism with the government will be established to facilitate provision of guidance and review implementation progress on an annual basis.
147. Within the UN system, the strategic oversight for the implementation of the UNSF will be led by the UNSF Steering Committee chaired by the Special Coordinator for Lebanon and co-chaired by the Resident/Humanitarian Coordinator. The UNCT will remain the main body for coordinating efforts within the UNSF and assessing progress on a periodic basis.

Internal UN Coordination arrangements.

148. In order to minimize transaction costs, the overall internal UN coordination, monitoring and reporting on the strategy be overseen through existing UN coordination mechanisms. programmatic overview of the implementation of the UNSF will be carried out by the Programme Management Team (PMT) on behalf of the UNCT, which will report both to the UNSF Steering Committee and the UNCT.
149. The PMT will work through three main “Results Groups” responsible for programme coordination and implementation of the UNSF, including through Joint Workplans and the development of joint programmes (see below). These three groups correspond to the three pillars of the strategy:
- Peace and Security (group led by UNSCOL)
 - Governance and political stability (group led by UNDP)
 - Socio-economic development (group led by the RCO through the PMT).
150. In addition to the Pillar results groups, a number of ad hoc thematic groups will be maintained or created as needed on a time limited basis to advance particular dossiers related to the UNSF, particularly in areas where coordination mechanisms do not currently exist (for instance SDG implementation/monitoring and UN support for strengthening national data and statistical capacities). These groups will be responsible for providing the UNCT with advice and recommendations regarding inter-agency priority initiatives, including joint research products, studies, common strategic and programmatic approaches, and joint programmes.

151. Through the inter-agency mechanism led by UNHCR and UNDP, a number of existing “sectors” established under the LCRP will be engaged – according to their relevance – for the oversight/implementation of some outputs of the UNSF.
152. Aside from these internal coordination mechanisms, the UN system in Lebanon will continue to participate and support the reinforcement of national coordination mechanisms around key national priorities.

Suggested coordination mechanisms and thematic groups:



Implementation and management

153. All UN agencies commit to ensuring the implementation of activities reflected in the UNSF and to strive to achieve the objectives outlined in the strategy. As such, agency Country Development Plans (CPDs) or equivalent documents, will be aligned to the UNSF in view of contributing to its implementation. Through their country plans, UN agencies will assume the responsibility for the programme and financing of their activities reflected in the various pillars of the strategy and identify priority programmes/initiatives for which funding will be mobilized.
154. As indicated above, the three ‘pillar results groups’ will have a primary responsibility for programmatic-level planning and coordination. A key function in this regard consists of developing Joint Work Plans for each pillar, which will serve as the main instruments for operationalizing the UNSF by translating its outcomes into concrete, measurable and time-bound outputs. These in turn will form the basis for monitoring and evaluation of the UNSF (see section 7, below). The three pillar results groups will also be responsible for undertaking joint analysis of the policy environment, key development issues and emerging trends to ensure UN system responsiveness to developments in the national context. The pillar results groups will also

contribute to the development of common UNCT advocacy and joint messaging, and inform policy dialogue with government counterparts. Finally, they will also be responsible for ensuring information sharing between agencies.

155. Emphasis will also be placed on joint programming and alignment by UN agencies as a vehicle for maximizing inter-agency synergies and delivering results within the UNSF framework. Pillar results groups will in this regard work to assist formulation of joint programming in areas of convergence between various UN mandates and of identified priority thematic issues. In line with the commitment in the Whole of Lebanon approach to coordinated and integrated UN response, initial **priority areas to be considered for alignment and joint programming** across the UN system in Lebanon will include:

- Developing and implementing a UN-wide strategy for efforts to **Prevent Violent Extremism** and supporting the implementation of the SG Plan of Action
- Collectively supporting the roll-out of the **Sustainable Development Goals** in Lebanon and the forming of a vision for how the 2030 Agenda can help Lebanon’s development in the current context.
- Aligning efforts to support increased protection and societal participation of **youth** and support the development and implementation of an action plan for the National Youth Policy.
- Joining forces with the wider international community in Lebanon to analyze opportunities for creation of **economic opportunities and jobs** and move towards a common strategy for supporting inclusive long term growth in the country.
- Comprehensive support for Lebanese **administrative capacity development** – particularly with regards to statistical data.

7. Monitoring and evaluation

The following section describes the means, frequency, tools and responsibility for monitoring and reporting on the implementation of the UNSF.

156. The monitoring and evaluation (M&E) of the UNSF will be based on the UNSF Results and Resources Framework and individual UNSF pillar Joint Work Plans, which includes key commitment in terms of indicators and their means of verification, and baselines and targets. M&E for the UNSF will exploit synergies with the follow-up on the SDGs included in the Results and Resources Framework. The M&E process will facilitate strategic and programmatic adjustments and identification/analysis of challenges to date to inform future planning.
157. In close cooperation with the existing thematic working groups and task forces, the lead agency of the three UNSF pillars³³, supported by the PMT, will be responsible for coordinating with key agencies and GoL counterparts identified for each indicator of the UNSF and for the recording and reporting of indicators on an annual basis. The following M&E products will be developed and presented to the UNCT and UNSF Steering Committee:
- An annual Common Country Results Report will be produced summarizing the progress made by the UN against output indicators and will highlight key achievements and major bottlenecks. A final report will be developed to take stock of the UNCT achievements and progress throughout the four year framework and to generate evidence of the UN cooperation towards national priorities.
 - A mid-term evaluation will be undertaken end-2018 aiming to provide feedback to enhance the UNSF effectiveness and contribution to national priorities and needs. The mid-term evaluation will provide an opportunity to assess progress, identify challenges and make necessary adjustments to the strategy and/or results framework.
 - A final evaluation will be conducted on the UNSF contribution to enhancing the coherence, efficiency and effectiveness of the UN assistance in Lebanon and as well to provide informed recommendations for the next planning framework.

Both evaluations will be conducted with the help of external experts and in line with the norms and standards of the UN Evaluation Group (UNEG).

158. After the first year of implementation, or when a national development plan or national budget is approved, the UNSF will be reviewed in partnership with government to ensure continued alignment with national priorities and the changing situation in the country. This review will also take into account the focus and priorities of the nationally contextualized SDG agenda in Lebanon.

³³ Pillar one - peace and security: UNSCOL; Pillar two - political stability and governance: UNDP, and Pillar three - socio-economic development: RCO.

8. UNSF Results matrix

Core Priority 1: All people in Lebanon enjoy peace and security.				
Outcome 1.1: Territorial integrity and security strengthened in accordance with human rights principles (i.e. external security).				
Contributing agencies: UNSCOL, IOM, UNOPS, UNODC, UNICEF, UNDP, UNHCR, UNIFIL				
Counterparts: ISF, LAF, MOJ, MOIM, MOD, MoSA, MoFA, GSO				
Indicators, baselines (2015) and targets (2020)	Means of verification	Role of UN	UN Indicative Resources	Delivery framework (UN)
1.1.1. Border security policy and border management strategy adopted and implemented. <i>Baseline: 0</i> <i>Target: 2</i>	-GoL decisions and approvals -Border policy and strategy documents	<ul style="list-style-type: none"> Support state authorities to strengthen immigration and border management systems through: the provision of expertise towards formulation of a border policy and strategy; refurbishment of border posts; and sensitization on applicable international standards for refugee protection and asylum seekers. Support the LAF in updating its Capability Development Plan in line with the UN Human Rights Due Diligence Policy. Assistance in securing maritime borders and entry points by carrying out maritime interdiction operations. Provision of support to MOSA and MOIM (including General Security) to develop administrative procedures and ensure their implementation at borders. 	IOM: \$ 10 million	IOM strategy
1.1.2. Number of Lebanon-Syria border infiltration attempts by armed militants detected. <i>Baseline: 12</i> <i>Target: 0</i>	-LAF records		UNOPS: \$ 5 million	UNICEF: Work Plan to Prevent and Respond to the Association of Children with Armed Violence in Lebanon
1.1.3. Number and type of administrative procedures to identify individuals in need of international protection and access to territory adopted and implemented at border points by national authorities. <i>Baseline: 0</i> <i>Target: 1</i>	-MOSA records -Internal circulars		UNICEF: \$ 6.04 million	UNICEF CPD
			UNHCR: \$ 1 million	
			UNDP: \$ 4 million	UNDP CDP
			UNODC: \$ 2 million	PRST
			Indicative total: \$ 28.04 million	

Outcome 1.2: Lebanese authorities are better equipped to maintain internal security and law and order in accordance with human rights principles.					
Contributing agencies: UNSCOL, UNOPS, UNODC, UNICEF, UNDP, UNHCR, OHCHR, UNFPA, UNIFIL, UN Women, IOM					
Counterparts: MOIM, MOJ, LAF, GSO, MOSA, GSO					
Indicators, baselines (2015) and targets (2020)	Means of verification	Role of UN	UN Indicative Resources	Delivery framework (UN)	
1.2.1. Number of municipalities providing policing services in line with regulatory framework and code of conduct. <i>Baseline: 80</i> <i>Target: 200</i>	-MOIM statistics -Municipal police by-law approval documents	<ul style="list-style-type: none"> ● Support the development of legal and regulatory frameworks on internal security and municipal policing in line with Lebanon’s international human rights obligations, such as ICCPR, CAT, CRC, CERD, CEDAW, CESC, OPCAT and the UDHR. ● Support municipal and community based security enforcement bodies to undertake effective policing in their respective constituencies. ● Support the General Directorate of the General Security to develop a code of conduct in line with Lebanon’s international human rights obligations, such as ICCPR, CAT, CRC, CERD, CEDAW, CESC, OPCAT and the UDHR. ● Provision of training to municipal police units to uphold SOPs and Code of Conduct. ● Support state authorities to prevent violent extremism and counter terrorism through the provision of technical expertise on PVE and the development of a national PVE/CT plan. ● Support implementation of Work Plan for Children associated with armed forces and groups. ● Support MOIM to establish district security cells in accordance with defined standards to carry out conflict analysis and prepare tension monitoring reports. 	IOM: \$ 2 million	Justice for Children Strategy for Lebanon	
1.2.2. Number of internal security incidents recorded (disaggregated by extremist violence and armed conflict). <i>Baseline: 135 incidents of extremist violence, 6 incidence of armed conflict in Palestinian camps (Ain El Helwe) and 72 incidence of armed clashes with armed groups along the Syrian border (Arsal, Ras Baalbek).</i> <i>Target: Significant reduction compared to baseline³⁴</i>	-Data from ISF and LAF -UN conflict analysis reports		UNOPS: \$ 10 million	UNDP: \$ 2.5 million	Work Plan to Prevent and Respond to the Association of Children with Armed Violence
1.2.3. Number of District level security cells that respond to cases of tension based on regular tension monitoring and coordination. <i>Baseline: 6</i> <i>Target: 25</i>	-UN Conflict analysis reports -Lebanon Support incident map		UNHCR: \$ 1 million	UNFPA: \$ 150,000	UN Common Approach Document on PVE-CT
			UNODC: \$ 2 million	UNFPA CPD 2017-2020	
			Indicative total: \$ 17.65 million		

³⁴ Target to be determined with Government at implementation of relevant interventions

		<ul style="list-style-type: none"> ● Through strategic partnership with LAF, facilitate increased support to reinforcing LAF capabilities for its gradual assumption of sustainable security control of South Lebanon and territorial waters. ● Support rehabilitation and reintegration programmes for children associated with armed conflict or violence. 		
Outcome 1.3: Lebanon has institutionalized mechanisms to promote peace and prevent, mitigate and manage conflict at municipal and local level. Contributing agencies: UNSCOL, UNDP, UNHCR, UNRWA, UNIFIL, UNICEF, UN Women, UNFPA, IOM Counterparts: MOIM, MOSA, MEHE, NCLW				
Indicators, baselines (2015) and targets (2020)	Means of verification	Role of UN	UN Indicative Resources	Delivery framework (UN)
1.3.1. Number of communities maintaining peace and security through improved service provision and peace building efforts. <i>Baseline: 95</i> <i>Target: 200</i>	-UN Conflict analysis reports and incident map (UNDP) -Proceedings of the social stability working group (LCRP)	<ul style="list-style-type: none"> ● Local peacebuilding initiative and service provision financed and implemented by the UN. ● Mobilization of Lebanese and host communities, establishment of peace building structures and their capacity building. ● Support to local civil society and women’s groups to engage on peacebuilding and conflict resolution ● Strengthen capacities of children, families and communities in vulnerable localities in Lebanon to protect themselves and to promote practices that safeguard children and women, including promotion of social cohesion and through implementation of the inter-ministerial Work Plan to Prevent and Respond to Children Associated with Armed Violence in Lebanon. ● Support local initiatives by community members (local leaders, caregivers, youth, children, etc.) and groups (CBOs, FBOs, informal networks, etc.) to manage conflict and disputes in their communities 	IOM: \$ 10 million UNICEF: \$ 400,000 UNDP: \$ 10 million UNHCR: \$ 7 million UNFPA: \$ 150,000 UNRWA: \$ 50,000 UN Women: \$ 3 million Indicative total: \$ 30.6 million	LCRP (social stability sector) Social stability working group Work Plan to Prevent and Respond to the Association of Children with Armed Violence in Lebanon UNFPA CPD 2017-2020 UNSCR 1612
1.3.2. Number of structures/mechanisms comprising Lebanese and refugee communities that play an active role in dispute resolution and conflict prevention. <i>Baseline: 0</i> <i>Target: 50</i>	-UNHCR and UNDP project monitoring reports -MOIM records			

Core Priority 2: Lebanon enjoys domestic stability and practices effective governance.

Outcome 2.1: Government's ability to improve the performance of institutions and promote participation and accountability increased.

Contributing agencies: UNDP, UNSCOL, ILO, IOM, UNICEF, UNFPA, UNESCO, UN Women, UN Habitat, UNIFIL, UNHCR

Counterparts: PCM, MOIM, OMSAR, MOF, MOET, CAS, MEHE, CDR, RPTA, Parliament, MoSA, MoPH, MoL, NCLW

Indicators, baselines (2015) and targets (2020)	Means of verification	Role of UN	UN Indicative Resources	Delivery framework (UN)
2.1.1. Number and type of policies agreed as a result of dialogue on national policies. <i>Baseline: 2</i> <i>Target: 3</i>	-Official Gazette and Lebanese Parliament website for laws and official Ministries' decrees and reports for new procedures.	<ul style="list-style-type: none"> Support institutional strengthening to facilitate consensus building on policy and reform issues. These issues include decentralization, regional and local development, electoral law reform and the impact of the Syrian crises as well as gender issues. Support civil society, youth, gender groups, employers organizations and trade unions to effectively participate in national decision making processes. 	UNDP: \$ 40 million UNHCR: \$ 12 million UNICEF: \$ 30 million	SCR 2250 National Youth Policy UNICEF CPD (2017 – 2020) MoSA National Plan to Safeguard Women and Children in Lebanon (phase II - 2017)
2.1.2. Number and type of laws passed by the Lebanese Parliament in consultation with civil society. <i>Baseline: 1</i> <i>Target: 8</i>	-Official Gazette	<ul style="list-style-type: none"> Support GoL for a more efficient and effective administration of justice. Support the strengthening of the Oversight Capacity of Parliament for enhanced legislative functions and accountability. 	UNFPA: \$ 1.5 million UN Habitat: \$ 2 million	National CP strategy led by HCC
2.1.3. Number of justice reform initiatives and procedures implemented. ³⁵ <i>Baseline: 0</i> <i>Target: 8</i>	-MoJ records -UNDP monitoring reports	<ul style="list-style-type: none"> Technical support to parliamentary committees on oversight functions and research. Support to concerned ministries (including MOIM, MOSA, MOPH, MEHE and others) for the development of policies and plans in line with 	UN Women: \$ 3 million ILO: \$ 3 million	UN-Habitat CPD (2017-2020)

³⁵ No major justice reform initiatives were implemented. Some access to justice activities such as a website, directory of services and public information services were provided.

<p>2.1.4. Number and type of policies and plans adopted by the Government vis a vis: refugees, asylum seekers, women and children in line with international standards. <i>Baseline: 5 (0 UNHCR and 5 UNICEF)</i> <i>Target: 13 (3 UNHCR and 10 UNICEF)</i></p>	<p>-UNICEF and UNHCR monitoring reports -MOIM, MOSA, MOPH and MEHE policies and plans</p>	<p>international standards of international protection for refugees and asylum-seekers.</p> <ul style="list-style-type: none"> ● Support the government of Lebanon to apply international and minimum standards on child protection and gender based violence in policies and programmes. This includes reinforcing different line ministries to implement and mainstream child protection and GBV in their sector related policies. 	<p>Indicative total: \$91.5 million</p>	<p>UNFPA CPD 2017-2020</p>
<p>2.1.5. Number of people (including refugees, women, children, youth, elderly, persons with disabilities, and others) accessing services from Social Development Centers. <i>Baseline: 300,000 (2015 achievement of UN as per MoSA NP)</i> <i>Target: 750,000</i></p>	<p>-MOSA statistics and Activity Info</p>	<ul style="list-style-type: none"> ● Support Government in electoral reforms to undertake elections in accordance with international standards. ● Support relevant ministries with improved capacities to develop and implement fiscal, economic and social policies. ● Support GoL for a more efficient customs processes, better trade border controls, more effective land and cadastre administration, and advanced tax reforms. 		
<p>2.1.6. Number and nature of irregularities observed according to international standards during municipal and parliamentary elections. <i>Baseline: Irregularities included in 2009 Observers Report on Parliamentary Elections and 2010 Municipal Elections Observers Report.</i> <i>Target: 2016 Municipal elections – 0 irregularities and; 2017 Parliamentary elections – 0 irregularities</i></p>	<p>-Elections Observation Reports -Ministry of Interior and Municipalities elections results -Gender audit report</p>	<ul style="list-style-type: none"> ● Support GoL capacities to implement public administration reform strategy in a transparent and accountable manner using e-government and other tools. ● Support the local business environment by enhancing support services for SMEs, encouraging young entrepreneurs, and increasing access to financing. ● Advocacy for official statistics, and support capacity development for official statistics to enable evidenced-based planning and implementation of economic and social policies, 		
<p>2.1.7. ³⁶Number and type of key initiatives for reform implemented (disaggregated by: Fiscal reforms, Admin Reform Strategy, SME</p>	<p>Ministry of Finance, Ministry of Economy and Trade, CAS and</p>	<p>international standards of international protection for refugees and asylum-seekers.</p> <ul style="list-style-type: none"> ● Support the government of Lebanon to apply international and minimum standards on child protection and gender based violence in policies and programmes. This includes reinforcing different line ministries to implement and mainstream child protection and GBV in their sector related policies. 		

³⁶ Administrative Reform Strategy adopted by OMSAR in 2012, SME Strategy developed in 2014, and Statistical Master plan developed 2011.

Strategy and Statistical Master Pan). <i>Baseline: 0</i> <i>Target: 10</i>	OMSAR periodic and annual reports	in particular poverty reduction measures and gender gaps. ● Support (technical and monitoring) provided by the UN team at PCM for the development of a decision support system.		
2.1.8. Number and type of decision support systems implemented and operational at PCM/PMO. <i>Baseline: 0</i> <i>Target:1</i>	-UNDP monitoring reports and PCM reports -Web based decision support system	● Support the revival of ECOSOC and its work on social dialogue. ● Support national and local capacities to undertake disaster risk management.		
2.1.9. Economic and Social Council of Lebanon assumes its functions. <i>Baseline: 0</i> <i>Target:1</i>	-MoL reports -ECOSOC work plan -ECOSOC meeting minutes and decisions	● Support to MOYS for the establishment of a multi-sectoral coordination body to oversee the implementation of the national youth policy, development of an action plan for the national youth policy and a monitoring and evaluation framework. ● Support in advocacy efforts for increasing the number of Gender focal points in all administrations/ministries, support in elaboration of guidance note regarding role of GFP, support in revising role of GFP and developing a capacity development plan for GFP.		
2.10. Number of key recommendations in the national youth policy and its action plan implemented. <i>Baseline: 10</i> <i>Target: 50</i>	-Decisions of coordination body -Youth Action Plan	● Support NCLW's advocacy and lobbying efforts to ensure that NCLW/women's machinery is consulted and advises parliamentary committees.		
2.11. Number of Gender Focal Points appointed in line ministries and public administrations <i>Baseline: 53</i> <i>Target: 65</i>	-PM circular - NCLW Strategic Plan - GFP reports			
2.12. Number of advises/consultations addressed to parliamentary committees issued by the women machinery/NCLW. <i>Baseline: 0</i> <i>Target: 5</i>	-Administrative advises, minutes/procee			

	<p>dings of meetings</p> <p>-NCLW Strategic Plan</p> <p>-Parliamentary records</p>			
<p>Outcome 2.2: State has institutionalized mechanisms for enhanced protection of human rights, rule of law and access to justice for all people in Lebanon.</p> <p>Contributing agencies: OHCHR, UNDP, UNFPA, UNSCOL, UNRWA, UNICEF, ILO, UNODC, UN Women, UNHCR, IOM</p> <p>Counterparts: PCHR, MOFA, MOJ, MOL, CDR, MOSA, NCLW</p>				
Indicators, baselines (2015) and targets (2020)	Means of verification	Role of UN	UN Indicative Resources	Delivery framework (UN)
<p>2.2.1. Percentage of UPR recommendations implemented.</p> <p><i>Baseline: 219³⁷</i></p> <p><i>Target: 60%</i></p>	-National Report submitted by the State for UPR third cycle	<ul style="list-style-type: none"> ● Provide institutional support for the establishment and functioning of a Human Rights Institution and a National Preventive Mechanism in line with Lebanon’s international Human Rights obligations under the Optional Protocol of the Convention Against Torture and Paris Principles. ● Support the GoL in establishing a National Mechanism for Reporting and Follow-up on international human rights mechanisms ● Support the Higher Council for Childhood in the review process of the CRC and monitoring of the implementation of the concluding observations. ● Support GoL to perform an effective judicial role in the protection of groups at risk (e.g. children and migrant) including development of alternative measures to detention and family 	OHCHR: \$ 700,000	CRC review process including list of issues and concluding observations
<p>2.2.2. Percentage of CRC concluding observations implemented.</p> <p><i>Baseline: 0</i></p> <p><i>Target: 50%</i></p>	-CRC reports		UNHCR: \$2 million	
<p>2.2.3. Number of court rulings making reference to international human rights, refugee and labor norms.</p> <p><i>Baseline: 3</i></p> <p><i>Target: 10</i></p>	-Courts’ records -Administrative instructions -Laws issued		ILO: \$ 5 million	UNFPA CPD 2017-2020
<p>2.2.4. Number of functioning institutionalized mechanisms established to promote/protect human rights.</p>	-Number of submission-ns to the International		UNFPA: \$ 150,000	UNODC: \$5.5 million

³⁷ In November 2015, the government of Lebanon reviewed its human rights record with the Human Rights Council and received 219 recommendations, of which 128 were accepted and 89 recommendations were noted, to enhance the situation of human rights in the country

<p><i>Baseline: 2 (Mol and Parliamentary committee)</i> <i>Target: 4</i></p>	<p>Human Rights System (IHRS)</p>	<p>based care arrangement in line with international human rights and labor conventions.</p>	<p>UNRWA: \$ 1.7 million</p>	
<p>2.2.5. Percentage of children in conflict with the law benefiting from alternative measures to detention and diversion implemented by trained professionals. <i>Baseline: 25%</i> <i>Target: 60%</i></p>	<p>-UNODC Reports on Prison Reform</p>	<ul style="list-style-type: none"> ● Support GOL capacities to ensure prisons and detention facilities function in line with international Basic Principles for the Treatment of Prisoners. ● Support Government to check and reduce child labor in Lebanon. ● Protection of individuals in accordance with applicable international norms and Lebanese laws and regulations. 	<p>IOM: \$ 3 million</p>	
<p>2.2.6. Number of new legal measures adopted to facilitate timely and affordable access to justice to vulnerable groups (refugees, migrant workers, Lebanese poor, victims of trafficking). <i>Baseline: 0</i> <i>Target: 3</i></p>	<p>-Lebanon report on the CRC by the Committee on the Rights of the child (2017) and MoJ database</p> <p>- Lebanon report to CEDAW Committee, and the Committee’s concluding observations.</p> <p>- MOJ prison data base</p> <p>- Reports of the Prosecutors’ Office</p>	<ul style="list-style-type: none"> ● Support government to establish an institutional referral mechanism for potential victims of trafficking, and to enhance the institutional capacity to deal with TIP cases ● Support to Personal Status Department and MOSA on conducting birth registration, in accordance with applicable international norms and Lebanese laws and regulations, and awareness of birth registration among refugees. ● Support civil society to effectively participate in implementing recommendations of international human rights mechanisms. 	<p><i>Indicative total:</i> <i>\$ 28.05 million</i></p>	
<p>2.2.7. Percentage of refugee newborn babies having their birth registered with Lebanese authorities (PSD/Nofous). <i>Baseline: 32%</i> <i>Target: 90%</i></p>	<p>-PSD records and UNHCR reports</p>			

Outcome 2.3. Institutional mechanisms and policies strengthened for improving the legal status of women and girls, eliminating gender based violence and promoting gender equality.

Contributing agencies: UNFPA, UNDP, UNSCOL, UNICEF, OHCHR, UNRWA, UNIDO, UN Women

Counterparts: NCLW, CDR, Parliamentary women commission, MOSA, MOFA, CAS

Indicators, baselines (2015) and targets (2020)	Means of verification	Role of UN	UN Indicative Resources	Delivery framework (UN)
<p>2.3.1. Number of women candidates who stand for municipal and parliamentary elections [linked to SDG 5.5.1]. <i>Baseline: Municipal 1,080 candidates in 2010 and Parliamentary 12 candidates in 2009</i> <i>Target: Municipal 4,400 candidates in 2020 and Parliamentary 76 candidates in 2017</i></p>	<p>-Elections Observation Reports</p>	<ul style="list-style-type: none"> ● Support NCLW with the harmonization of the Gender equality and women empowerment legal framework in line with international standards, including CEDAW. ● Enhance institutional capacities of NCLW – among others, to promote gender equality and empowerment of women and girls. 	<p>UNRWA: \$ 80,000</p> <p>OHCHR: \$ 60,000</p> <p>UNFPA: \$ 2.5 million</p>	<p>CEDAW recommendations</p> <p>National women strategy/action plan</p>
<p>2.3.2. Number of laws and directives to remove discriminatory articles against women and to achieve gender equality, [linked to SDG 5.1.1]. <i>Baseline: 12</i> <i>Target: 25</i></p>	<p>-CEDAW reports -National gazette</p>	<ul style="list-style-type: none"> ● Support national capacities including of NCLW for establishing and operationalizing the gender audit system. ● Support capacities of NCLW to lead the establishment of an Action Plan on SCR1325. ● Support NCLW and civil society organizations for the implementation and reporting on CEDAW recommendations. 	<p>UNICEF: \$ 17 million</p> <p>UNDP: \$ 50,000</p>	<p>SCR 1325 (women, peace and security)</p> <p>UNICEF CPD (2017-2020)</p>
<p>2.3.3. Number of ministries/public institutions (aside from NCLW) that have increased their annual budget allocation for gender related initiatives [linked to SDG 5.c.1]. <i>Baseline:</i> <i>Target: 2</i></p>	<p>-Gender audit reports</p>	<ul style="list-style-type: none"> ● Support related entities for the production, analysis and adoption of knowledge products on GEWE, including engaging men and boys. ● Support civil society, including youth movements on engaging on GEWE. 	<p>UN Women: \$ 3 million</p> <p>UNIDO: \$130,000</p>	<p>MOSA National Plan to Safeguard Children and Women</p>
<p>2.3.4. National Action plan to implement UNSCR 1325 developed, validated and adopted by governmental institutions in consultation with CSO [linked to CEDAW recommendations]. <i>Baseline: 0</i></p>	<p>-CEDAW reporting -National Action Plan -National gazette</p>		<p>Indicative total: \$ 22.82 million</p>	<p>UNFPA CPD (2017-2020)</p>

<i>Target: 1</i>				
2.3.5. % girls and women reporting satisfaction with services provided (disaggregated by Lebanese and refugees). <i>Baseline: 0%</i> <i>Target: 50%</i>	-Beneficiary feedback survey			
2.3.6. Number of CEDAW committee's recommendations implemented. <i>Baseline:1</i> <i>Target: 5</i>	-CEDAW reports			

Core Priority 3: Lebanon reduces poverty and promotes sustainable development while addressing immediate needs in a human rights/gender-sensitive manner.

Outcome 3.1. Productive sectors strengthened to promote inclusive growth and local development especially in most disadvantaged areas.

Contributing agencies: ILO, IOM, UNDP, UNIDO, FAO, UNICEF, UNRWA, UNFPA, UN Women, WFP, IOM

Counterparts: MOI, MOA, MOSA, MOET, MOL, CAS, MOIM, CDR, NSSF, NCLW

Indicators, baselines (2015) and targets (2020)	Means off verification	Role of UN	UN Indicative Resources	Delivery framework (UN)
3.1.1. Number of people accessing new and ³⁸ decent short and long-term employment through policy support and employment creation programmes within Lebanese law (disaggregated by gender and age as well as Lebanese and refugees). <i>Baseline: 500</i> <i>Target: 25,000</i>	-MoI statistics -MoA statistics -MoL statistics -CAS Statistics -MOSA Lebanese Host Community Service Project	<ul style="list-style-type: none"> Support the most vulnerable with improved access to income generating activities and communal infrastructure in line with Lebanese law and regulations. Support relevant line ministries and departments to develop economic infrastructure that facilitates local economic growth in a participatory and equitable manner. 	UNDP: \$ 250 million UNIDO: \$ 20 million ILO: \$ 40 million	UNRWA Medium Term Strategy 2016-21 and Strategic Response Plan for Lebanon 2016-21

³⁸ Decent work sums up the aspirations of people in their working lives. It involves opportunities for work that is productive and delivers a fair income, security in the workplace and social protection for families, better prospects for personal development and social integration, freedom for people to express their concerns, organize and participate in the decisions that affect their lives and equality of opportunity and treatment for all women and men.

<p>3.1.2. Number of people with improved access to local, communal infrastructure and services in the 251 most vulnerable cadastres (disaggregated by gender and age as well as Lebanese and refugees). <i>Baseline: 1.5 million (including all cohorts of the population resident in Lebanon)</i> <i>Target: 2 million (including all cohorts of the population resident in Lebanon)</i></p>	<p>-UNDP monitoring reports</p>	<ul style="list-style-type: none"> ● Strengthen SME competitiveness in host communities by focusing on i) clustering cultural and creative industries in Lebanon; ii) continuing support to private sector institutions through the provision of enterprise development and investment promotion services and iii) direct support to selected value chains through the Community Empowerment and Livelihood Recovery project as well as the improvement of Lebanese food-industries compliance with food safety requirements. 	<p>IOM: \$ 12 million</p> <p>FAO: \$ 24 million</p>	<p>UNIDO Country Programme Framework 2015-2018</p>
<p>3.1.3. Percentage share of small and medium-scale enterprises in total industry value added [SDG 9.3.1]. <i>Baseline: 20%</i> <i>Target: 25%</i></p>	<p>-CAS establishments survey -Business incubators reports -Chambers of Commerce statistics</p>	<ul style="list-style-type: none"> ● Support the efforts of the Ministry of Industry in: i) the development of industrial zones especially in the most vulnerable and marginalized areas of the country; ii) formulation and implementation of a comprehensive industrial strategy and; iii) provide Lebanese vulnerable communities affected by the Syrian crisis with job creation and livelihood opportunities. 	<p>UNRWA: \$269,592</p> <p>UN Women: \$5 million</p> <p>IOM: \$ 12 million</p>	<p>FAO Country Programme Framework (2016-2019)</p> <p>UNICEF CPD 2017-2020</p>
<p>3.1.4. Manufacturing value added as a percentage of GDP and per capita (SDG 9.2.1). <i>Baseline: 7 percent</i> <i>Target: 10 percent</i></p>	<p>-CAS National Accounts data -UNIDO monitoring reports</p>	<ul style="list-style-type: none"> ● Strengthen relevant line ministries capacities to act as a catalyst for economic growth and promote partnerships with the private sector (e.g. industrial zones, trade capacity building initiatives, and relevant line ministries' innovation and ITC training programmes). 	<p>Indicative total: \$ 363.27 million</p>	<p>ILO Decent Work Country Framework for Lebanon (2016-2019)</p>
<p>3.1.5. Agriculture value added as a proportion of GDP and per capita. <i>Baseline agriculture: 4.5%</i> <i>Target Agriculture: 6%</i></p>	<p>-MoA statistics FAO monitoring reports -CAS National Accounts</p>	<ul style="list-style-type: none"> ● Support to official statistical system, including the establishment of the statistical business register, and to the production of indicators and statistical surveys. ● Provide support to MoA to register farming as a recognized profession in Lebanon in order to 		

<p>3.1.6. Number and type of unregistered professions recognized and registered.</p> <p><i>Baseline: 0</i> <i>Target 1 (agriculture)</i></p>	<p>-MoSA social protection policies</p> <p>-Registration documentation</p>	<p>enable the inclusion of farming in social protection programmes.</p>		
<p>Outcome 3.2. Improved equitable access to and delivery of quality social services, social protection and direct assistance.</p> <p>Contributing agencies: WHO, UNICEF, UNHCR, UNDP, ILO, FAO, UNRWA, UNFPA, UN Women, UN Habitat, WFP, UNESCO, UNOPS, UNIFIL</p> <p>Counterparts: PMO, MOPH, MEHE, MOEW, MOA, MOL, MOJ, MOE, MOIM, MOSA, CDR, CAS, NSSF, NCLW</p>				
Indicators, baselines (2015) and targets (2020)	Means of verification	Role of UN	UN Indicative Resources	Delivery framework (UN)
<p>3.2.1. % increase of population without formal health insurance coverage, who access primary, secondary and tertiary health care at affordable cost with support from UN (disaggregated by Lebanese and Syrians and Palestinian refugees and gender and age).</p> <p><i>Baseline: 70% of vulnerable Lebanese and 72% of vulnerable refugees³⁹.</i> <i>Target: 85% of vulnerable Lebanese and 85% of vulnerable refugees</i></p>	<p>-PHC reports</p> <p>-MoPH reports</p> <p>-WHO reports</p> <p>-UNRWA Results Based Management System</p> <p>-NSSF statistics as of 30/09/2015</p>	<ul style="list-style-type: none"> ● Support Lebanese Public health service capacities for improved access to health care for vulnerable people with a focus on institutional resilience (capacity building). ● Support the Lebanese national education system to provide inclusive and equitable access to quality education opportunities for all children and youth (females and males). ● Support MEHE to strengthen the education system by employing an evidence-informed approach to governance and management of the sector, undertaking advocacy for equity and equality, engaging in policy dialogue, as well as enhancing capacities to achieve national education goals. ● Strengthen national systems and capacities to provide sustainable, culturally and gender 		<p>LCRP</p> <p>WHO joint program of work with MoPH</p> <p>UNRWA Medium Term Strategy 2016-21 and Strategic Response Plan for Lebanon 2016-21</p>
<p>3⁴⁰.2.2. % of children enrolled in pre-primary, primary and secondary education (Lebanese and non-Lebanese (disaggregated by gender).</p> <p><i>Pre-primary and primary:</i> <i>Baseline: TBD in discussion with MEHE</i></p>				<p>RACE II</p> <p>UNICEF CPD 2017-2020</p>

³⁹ Just 593,834 Lebanese are covered by the NSSF and 2,490 Palestinian refugees are registered by the NSSF and 692 Palestinian refugees benefit from the end of service by the NSSF.

⁴⁰ These indicators are being finalized in discussion with MEHE. Note: UNRWA's contribution to 3.2.2. and 3.2.3. is as follows: Baseline - 38,000 students in school and 1,100 students in vocational training and target 38,000 students in schools and 1,100 students in vocational training.

<p><i>Target: TBD in discussion with MEHE</i></p> <p><i>Secondary:</i></p> <p><i>Baseline: 1.6 % (non-Lebanese)</i></p> <p><i>Target: TBD in discussion with MEHE</i></p>		<p>appropriate equitable access to safe water and wastewater services for all.</p> <ul style="list-style-type: none"> ● Ensure environmental considerations are integrated into all infrastructure projects and social initiatives particularly electricity, water and wastewater solutions (using both conventional and alternative/sustainable sources) and other environmental priorities in line with national legislation and international best-practice. 	<p>UNICEF: \$ 806 million</p>	<p>National Water Sector Strategy</p>
<p>3.2.3. % youth (boys and girls) in TVET.</p> <p><i>Baseline: TBD in discussion with MEHE</i></p> <p><i>Target: TBD in discussion with MEHE</i></p>	<p>-MEHE statistics</p> <p>-UNRWA Results Based Management System</p>	<ul style="list-style-type: none"> ● Support for MOSA to social protection including the following: <ul style="list-style-type: none"> ▪ Review and revision of MOSA/NPTP programme, which is targeting Lebanese, to strengthen both the exit strategy and the programme's ability to help the Lebanese poor out of income poverty through vocational training, stronger links to service provision, and vouchers. ▪ Re-evaluate the poor and targeting based on US\$4,8 per day income. ▪ Continue possible linkages to humanitarian assistance – food assistance, seasonal shocks and technical assistance. ▪ Together with WB, look at the plan and design of the MOSA/NPTP and the quality of its services: child-friendly nature, training of social workers and capacity building in NPTP (i.e. M&E). ● Provide social protection including social safety nets, health services, education and vocational 	<p>UNFPA: \$ 4 million</p> <p>UNESCO: \$ 8 million</p>	<p>UNDP CPD</p> <p>UNESCO 38 C/5</p> <p>UNESCO Syria Crisis Response</p>
<p>3.2.4. % of population using safely managed drinking water services with support from the UN (disaggregated by Lebanese and refugees and gender) [SDG 6.1.1].</p> <p><i>Baseline: 0</i>⁴¹</p> <p><i>Target: 10% above baseline</i></p>	<p>-JMP</p> <p>-SitAn</p> <p>-Activityinfo</p> <p>-MEW statistics</p>		<p>FAO: \$ 6 million</p> <p>UNOPS: \$ 10 million</p>	<p>NPTP/MOSA/Prime Minister's Office, IA Basic Assistance Working Group, UNRWA social safety net programme</p>
<p>3.2.5. Percentage of wastewater safely managed with support from the UN (disaggregated by Lebanese and refugees) [SDG 6.3.1].</p> <p><i>Baseline: 8%</i></p> <p><i>Target: 15%</i></p>	<p>-JMP</p> <p>-SitAn</p> <p>-Activityinfo</p> <p>-MEW statistics</p>		<p>UNHCR: \$ 500 million</p> <p>WFP: \$ 1,220 million</p>	<p>MOSA NP, CP/GBV Sector working groups and other national CP/GBV framework including MOSA National Plan II to Safeguard Children and Women –</p>
<p>3.2.6. Number of vulnerable individuals with access to social protection (including social safety net) disaggregated by gender and age).</p> <p><i>Baseline: Lebanese: 24,000 households with children (including 5,000 – 6%- with food assistance)and Palestinians: 40,000 Palestinian refugees from Syria and 61,000 Palestinian refugees from Lebanon.</i></p>	<p>-UNRWA Results Based Management System</p> <p>- NPTP and NSSF reports</p>		<p>UNRWA: \$ 178.49 million</p> <p>UN-Habitat: \$ 5 million</p> <p>WHO: \$ 24 million</p>	

⁴¹ The baseline for this indicator has been provisionally agreed with MoEW and will be revised in September 2016 once the results of a water quality survey currently underway are available.

<p><i>Target: Lebanese: increase of 20% (including an increase to 11,000 - 14%- with food assistance) and Palestinians: 40,000 Palestinian refugees from Syria and 61,000 Palestinian refugees from Lebanon.</i></p>		<p>training and sanitation services to Palestine refugees in Lebanon.</p> <ul style="list-style-type: none"> ● Support social-economically poor and refugee children, women, youth and their families to gain access to direct assistance including during ad-hoc emergencies (cash assistance, food assistance, seasonal assistance, shelter and non-food in-kind (contingency) items). ● Support national partners to provide improved and equitable prevention of and response to violence, abuse, exploitation and neglect including gender based violence of boys and girls and women. ● Support to MOSA’s social development centers in Lebanon through provision of equipment and training of social workers. ● Support national institutions, in line with the National Policy Paper on Electricity, to ensure that electricity for basic needs are met. 	<p>UN Women: \$ 5 million</p> <p>ILO: 1 million</p>	<p>UNICEF, MOSA, partners</p> <p>UNESCO 38 C/5 and UNESCO Syria Crisis Response</p>
<p>3.2.7. Number of non-Lebanese vulnerable individuals with access to direct assistance (e.g. cash benefits, shelter, emergency assistance, food assistance).</p> <p><i>Baseline: Non-Lebanese and Syrian refugees receiving:</i></p> <ul style="list-style-type: none"> - 710,000- 66%- food assistance - 750,000 - multi-purpose cash benefits, seasonal cash, shelter and emergency (in-kind) assistance - 150,000 children- winter and emergency assistance <p><i>Palestinian refugees receiving: 5,600 for shelter rehabilitation assistance + 100% PRS food assistance + 80% PRS seasonal assistance to children.</i></p> <p>Target: Non-Lebanese and Syrian Refugees:</p> <ul style="list-style-type: none"> - 770,000- food assistance (77%) - 750,00, - multi-purpose cash (500,000), cash winter (750,000), shelter and emergency (in-kind) assistance (50,000) - 250,000 children – winter, emergency assistance and education child grant <p><i>Palestinians: 2,000 (500 annually) for shelter assistance) + 100% food assistance + 80% seasonal cash assistance and emergency assistance for children</i></p>	<p>-UNHCR RAIS database</p> <p>-NPTP</p> <p>-UNRWA database</p> <p>-FSMS</p>		<p>Indicative total: \$ 2,767.499 million</p>	<p>UN-Habitat CPD (2017-2020)</p> <p>UNFPA CPD 2017-2020</p> <p>UNFPA CPD 2017-2020</p> <p>Policy Paper on the Electricity Sector</p>

3.2.8. Percentage of children at high risk or survivors of violence, abuse, exploitation, referred by trained professionals to at least one service including education, social protection and child protection (disaggregated by gender and age). <i>Baseline: 12%</i> <i>Target: 30%</i>	-IMS data systems -Assessment reports - Activityinfo			
3.2.9. # of public institutions (Schools, SDC, PHC) who access water, wastewater and electricity services. <i>Baseline: TBD</i> ⁴² <i>Target: 400</i>	-JMP -SitAn -Activityinfo -MOEW statistics			
3.2.10. % of population with improved access to electricity for basic needs with support from the UN (disaggregated by Lebanese and refugees) <i>Baseline: TBD</i> ⁴³ <i>Target: 10% above baseline</i>	-MOEW statistics			

Outcome 3.3. Lebanon has improved environmental governance.

Contributing agencies: UNDP, UNEP, UNICEF, FAO, UNIDO, UNRWA, UNOPS, UNIFIL, UN Women

Counterparts: MOE, MOEW, MOIM, MOA, CDR, CAS, MOI, IRI, ALI, LCEC

Indicators, baselines (2015) and targets (2020)	Means of verification	Role of UN	UN Indicative Resources	Delivery framework (UN)
3.3.1. Number of initiatives linked to the national solid waste management Strategy implemented at regional and local level.	-National reports of Ministry of Environment and reports to donors.	● Support the improvement of national solid waste management systems (including medical, hazardous and e-waste).	UNOPS: \$ 7 million	LCRP UNDP CPD

⁴² This baseline will be determined by UNICEF, MOEW and MEHE during the course of programme implementation

⁴³ This baseline will be determined by UNDP and MOEW during the course of programme implementation.

<p><i>Baseline: 32</i> <i>Target: 13</i></p>				
<p>3.3.2. Increase in the number of resource efficient and cleaner production initiatives in industry.</p> <p><i>Baseline: 39</i> <i>Target: 69</i></p>	<p>Ministry of Industry reports, ALI, IRI/LCPC and UNIDO annual reports</p>			
<p>3.3.3. Tones of CO₂ eq emissions (or equivalent) reduced in the industrial and commercial sectors.</p> <p><i>Baseline: 0 tones of CO₂ eq</i> <i>Targets: 9,600 tons of CO₂ eq</i></p>	<p>National reports to the UNFCCC, Ministry of Energy and Water (NEEAP and NREAP) reports</p>			
<p>3.3.4. [SDG 15.9.1] Number of national development plans and processes integrating: biodiversity, renewable energy, energy efficiency, sustainable consumption and production, climate change, sound chemical management, sustainable consumption & production and ecosystem services values.</p> <p><i>Baseline: 3</i> <i>Target: 6</i></p>	<p>Statistics reports (CAS), CDR reports, national database of MoE and Council of Ministers decisions</p>			
<p>3.3.5. Number of costed projects for phase-out of POPs developed resulting from survey assessments undertaken.</p> <p><i>Baseline: 0</i> <i>Target: 1</i></p>	<p>-Renewable energy (NEEAP and NREAP) reports, MoE reports and UNEP project reports</p>			
<p>3.3.6. Number of adaptation to climate change projects developed and initiated in various sectors.</p>	<p>-MoE reports and UNFCCC reports</p>			
		<ul style="list-style-type: none"> ● Provide rubbish collection and removal services in Palestine refugee camps. ● Improve access to (sustainable) energy including renewable energy sources and support. ● Assist in awareness raising on key national and international environmental issues. ● Promote the reduction of sources of pollution including air pollution, water and wastewater pollution from various sources. ● Support reduced environmental impact and lowered production costs in industry through integrated pollution prevention and control. ● Improve access to (sustainable) energy including renewable energy sources ● Promote adaptation and mitigation action to combat climate change at the national level. ● Support for the implementation of NEEAP and NREAP ● Support the improvement of natural resources management and the protection of sensitive areas (including terrestrial and marine ecosystems). ● Promote sustainable agriculture production with a reduction of the agriculture footprint on the environment. 	<p>UNIDO: \$ 6 million</p> <p>FAO: \$ 17 million</p> <p>UNDP: \$ 40 million</p> <p>UNICEF: \$ 10 million</p> <p>UN-Habitat: \$ 2 million</p> <p>UN Women: \$ 0.5 million</p> <p>UNEP: \$ 0.1 million</p> <p>Indicative total: \$ 82.6 million</p>	<p>UNIDO Country Programme Framework 2015-2018</p> <p>UNRWA Medium Term Strategy 2016-21 and Strategic Response Plan for Lebanon 2016-21</p> <p>FAO Country Programme Framework (2016-2019)</p> <p>UNEP POW 2016-2017 and MTS, 2018-2021</p> <p>UN-Habitat CPD (2017-2020)</p>

<p><i>Baseline: 5</i> <i>Target:2</i></p>				
<p>3.3.7 Number and type of policies adopted for the reduction of the impact of agriculture on the environment</p> <p><i>Baseline: 0</i> <i>Target: 2</i></p>	<p>FAO monitoring reports GoL policies</p>			
<p>3.3.8. Number of initiatives linked to the energy efficiency and renewable energy action plans implemented at regional and local level.</p> <p><i>Baseline: 100 projects</i> <i>Target: 20% additional number of projects</i></p>	<p>Ministry of Energy and Water (NEEAP and NREAP) reports</p>			

Annex I: Summary of UNSF Consultation Process

Background:

159. The UNSF was developed by the United Nations system in Lebanon in consultation with national counterparts including line ministries, government technical offices, civil society organizations and international partners.
160. Consultations with national stakeholders took place during the month of April 2016 on the basis of a first draft of the UNSF results and resources framework developed by the UN system.
161. Consultations took place in three steps, as follows:

Step I: Bilateral consultations with government representatives

162. An initial round of bilateral consultations between the UN system represented by individual Agencies, Funds and Programmes and the office of the UN Resident Coordinator took place during the month of April on the basis of the proposed UN results and resources framework, as per the attached consultations matrix.
163. Overall, consultations with Government representatives and Line Ministries indicated a high degree of support and agreement with the proposed strategy of the UN. Most line ministries provided concrete feedback with regard to the formulation of indicators, baselines and targets as well as additions or amendments to the proposed role of the UN in support to government priorities. Ministries requested increased UN assistance for technical support and capacity development. There was a general agreement on the need to strengthen and develop the Central Administration of Statistics to meet the need for official statistics (such support would be helpful/necessary as well for the monitoring and evaluation of the UNSF).
164. Comments received during this phase were integrated in a revised results and resources framework and as well in the UNSF narrative. A new revised version was shared with the same stakeholders during step III of the consultations.

Step II: Multi-stakeholder consultation workshop

165. On 13 April 2016, the UN system in Lebanon organized a “Multi-stakeholder Dialogue: UN Cooperation with Lebanon 2017-2020” to discuss the key issues and priorities the UNSF intends to address. Over 150 participants from government, civil society, academia, private sector, donors and UN agencies participated in the workshop.
166. Many of the views and recommendations echoed the priorities and proposed role for the UN contained in the initial draft of the UNSF. Key overarching points included:
 - Strong support for the “Whole-of-Lebanon” approach, which integrates and leverages UN system efforts in a multi-dimensional strategy for strengthening the country’s stability;

- Identification of major cross-cutting challenges, including: sectarian/confessional politics, political paralysis, lack of political will and corruption.
- The importance of restoring trust between state and society, including as an area for UN engagement and support;
- Need for constructive and realistic approach to challenges in Lebanon, while also identifying opportunities for positive change;
- Need for strong UN engagement on capacity development, particularly from specialized agencies to parts of the government that are less vulnerable to political and other institutional challenges.

167. A final recommendation of this Dialogue was for the UN to continue to engage with a broad range of stakeholders as part of UNSF implementation, including in particular through additional dialogue on the implementation of the SDG agenda in Lebanon.

Step III: Bilateral consultations for final validation of the UNSF

168. Having integrated the various suggestions provided by line ministries and technical offices as well as the recommendations emerging from the Multi-stakeholder Dialogue, the UN system shared the final draft of the UNSF narrative and results and resource framework with the government counterparts for final validation (as per consultation matrix below)

169. At the same time, the final draft of the UNSF was shared with the Regional Peer Support Group and the Lebanon ITF for review and comments. The UNCT reviewed and validated the final draft prior to its transmission to other stakeholders.

Bilateral consultations matrix

GoL ministry/ institution	Pillar(lead)	Outcomes	UN focal point
Ministry of Defense (LAF)	Pillar 1 (UNSCOL)	1.1 (external security)	UNSCOL
		1.2 (internal security)	
Ministry of Interior and Municipalities (ISF)	Pillar 1 (UNSCOL)	1.1 (external security)	UNDP (w. UNSCOL, UNHCR and OHCHR)
		1.2 (internal security)	
		1.3 (inter-communal security)	
	Pillar 2 (UNDP)	2.1 (Government performance and participation)	
		2.3 (Gender)	
Pillar 3 (RCO)	3.2 (Social services and protection)		
Ministry of Justice	Pillar 1 (UNSCOL)	1.1 (external security)	UNDP(w. OHCHR)
		1.2 (internal security)	
	Pillar 2 (UNDP)	2.2 (Human rights/rule of law)	
		2.3 (Gender)	
	Pillar 3 (RCO)	3.2 (Social services and protection)	
Office of the Minister of State for administrative Reform	Pillar 2 (UNDP)	2.1 (Government performance and participation)	UNDP

Ministry of Industry	Pillar 3 (RCO)	3.1 (Productive sectors/growth)	UNIDO
		3.3 (Environment)	
Ministry of Labour	Pillar 2 (UNDP)	2.2 (Human rights/rule of law)	ILO (w. UNHCR)
		2.3 (Gender)	
	Pillar 3 (RCO)	3.1 (Productive sectors/growth)	
		3.2 (Social services and protection)	
Ministry of Economy and Trade	Pillar 2 (UNDP)	2.1 (Government performance and participation)	UNDP
	Pillar 3 (RCO)	3.1 (Productive sectors/growth)	
Ministry of Agriculture	Pillar 3 (RCO)	3.1 (Productive sectors/growth)	FAO
		3.2 (Social services and protection)	
		3.3 (Environment)	
Ministry of Social Affairs	Pillar 1 (UNSCOL)	1.3 (inter-communal security)	UNICEF (w. UNHCR)
	Pillar 2 (UNDP)	2.3 (Gender)	
	Pillar 3 (RCO)	3.1 (Productive sectors/growth)	
		3.2 (Social services and protection)	
Ministry of Education and Higher Education	Pillar 2 (UNDP)	2.1 (Government performance and participation)	UNICEF (w. UNESCO)
	Pillar 3 (RCO)	3.2 (Social services and protection)	
Ministry of Public Health	Pillar 3 (RCO)	3.2 (Social services and protection)	WHO (w. UNHCR)
Ministry of Energy and Water	Pillar 3 (RCO)	3.2 (Social services and protection)	UNICEF (w. UNDP)
		3.3 (Environment)	
Ministry of Environment	Pillar 3 (RCO)	3.2 (Social services and protection)	UNDP (w. UNEP, UNIDO)
		3.3 (Environment)	
Ministry of Youth and Sports	UNSF focus on youth		UNICEF (w. UNFPA)
National Commission for Lebanese Women	Pillar 2 (UNDP)	2.3 (Gender)	UNFPA
Ministry of Foreign Affairs	UNSF as a whole	All relevant	RCO (w. OHCHR, UNICEF)
Prime Minister's Office	UNSF as a whole	All relevant	RCO
CDR	UNSF as a whole	All relevant	UNDP
Ministry of Finance	UNSF as a whole	All relevant	RCO (w. UNDP)
CAS	UNSF as a whole	All relevant	UNDP
Parliament (Unit TBD)	UNSF as a whole	All relevant	UNDP (w. OHCHR)

Annex II: List of international human rights instruments ratified by Lebanon and reporting periods.

<u>COUNTRY</u>	<u>Treaty Description</u>	<u>Treaty Name</u>	<u>Signature Date</u>	<u>Ratification Date, Accession(a), Succession(d) Date</u>
Lebanon	Convention against Torture and Other Cruel Inhuman or Degrading Treatment or Punishment	CAT		05 Oct 2000 (a)
Lebanon	Optional Protocol of the Convention against Torture	CAT-OP		22 Dec 2008 (a)
Lebanon	International Covenant on Civil and Political Rights	CCPR		03 Nov 1972 (a)
Lebanon	Second Optional Protocol to the International Covenant on Civil and Political Rights aiming to the abolition of the death penalty	CCPR-OP2-DP		Not ratified
Lebanon	Convention for the Protection of All Persons from Enforced Disappearance	CED	06 Feb 2007	
Lebanon	Convention on the Elimination of All Forms of Discrimination against Women	CEDAW		16 Apr 1997 (a)
Lebanon	International Convention on the Elimination of All Forms of Racial Discrimination	CERD		12 Nov 1971 (a)
Lebanon	International Covenant on Economic, Social and Cultural Rights	CESCR		03 Nov 1972 (a)
Lebanon	International Convention on the Protection of the Rights of All Migrant Workers and Members of Their Families	CMW		Not ratified
Lebanon	Convention on the Rights of the Child	CRC	26 Jan 1990	14 May 1991
Lebanon	Optional Protocol to the Convention on the Rights of the Child on the involvement of children in armed conflict	CRC-OP-AC	11 Feb 2002	
Lebanon	Optional Protocol to the Convention on the Rights of the Child on the sale of children child prostitution and child pornography	CRC-OP-SC	10 Oct 2001	08 Nov 2004
Lebanon	Convention on the Rights of Persons with Disabilities	CRPD	14 Jun 2007	

Fundamental Labour Conventions

Convention	Date	Status
C029 - Forced Labour Convention, 1930 (No. 29)	01 Jun 1977	In Force
C098 - Right to Organise and Collective Bargaining Convention, 1949 (No. 98)	01 Jun 1977	In Force
C100 - Equal Remuneration Convention, 1951 (No. 100)	01 Jun 1977	In Force
C105 - Abolition of Forced Labour Convention, 1957 (No. 105)	01 Jun 1977	In Force
C111 - Discrimination (Employment and Occupation) Convention, 1958 (No. 111)	01 Jun 1977	In Force
C138 - Minimum Age Convention, 1973 (No. 138) Minimum age specified: 14 years	10 Jun 2003	In Force
C182 - Worst Forms of Child Labour Convention, 1999 (No. 182)	11 Sep 2001	In Force

Annex III: UNSF links to the SDG framework

UNSF Goal	UNSF Outcome	SDG Goal	SDG Indicator
Goal 1: Goal 1: All people in Lebanon enjoy peace and security.	Outcome 1.1: Territorial integrity and security strengthened in accordance with human rights principles (i.e. external security).	Goal 16: Peaceful and inclusive societies	16.1.2 Conflict-related deaths per 100,000 population (disaggregated by age group, sex and cause)
	Outcome 1.2: Lebanese authorities are better equipped to maintain internal security and law and order in accordance with human rights principles.	Goal 16: Peaceful and inclusive societies	16.3.1 Percentage of victims of violence in the previous 12 months who reported their victimization to competent authorities or other officially recognized conflict resolution mechanisms (also called crime reporting rate) 16.4.2 Percentage of seized small arms and light weapons that are recorded and traced, in accordance with international standards and legal instruments
	Outcome 1.3: Lebanon has institutionalized mechanisms to promote peace and prevent, mitigate and manage conflict at municipal and local level.	Goal 16: Peaceful and inclusive societies	16.1.3 Percentage of the population subjected to physical, psychological or sexual violence in the previous 12 months 16.1.4 Proportion of people that feel safe walking alone around the area they live
Goal 2: Lebanon enjoys political stability and practices effective governance.	Outcome 2.1: Government's ability to improve the performance of institutions and promote participation and accountability increased.	Goal 16: Peaceful and inclusive societies Goal 17: Partnerships for the goals	16.7.1 Proportions of positions (by age group, sex, persons with disabilities and population groups) in public institutions (national and local legislatures, public service, and judiciary) compared to national distributions 1.6.7.2. Proportion of countries that address young people's multisectoral needs within their national development plans and poverty reduction strategies 1.6.6.2. Proportion of the population satisfied with their last experience of public services
	Outcome 2.2: State has institutionalized mechanisms for enhanced protection of human rights, rule of law and access to justice for all people in Lebanon.	Goal 16: Peaceful and inclusive societies	16.b.1 Percentage of the population reporting having personally felt discriminated against or harassed in the previous 12 months on the basis of a ground of discrimination prohibited under international human rights law, disaggregated by age group and sex

	Outcome 2.3. Institutional mechanisms and policies strengthened for improving the legal status of women, eliminating gender based violence and promoting gender equality.	Goal 5: Gender equality & empower women and girls	5.5.1 Proportion of seats held by women in national parliaments and local governments 5.1.1. Whether or not legal frameworks are in place to promote, enforce and monitor equality and non-discrimination on the basis of sex
Goal 3: Lebanon reduces poverty and promotes sustainable development while addressing immediate needs in a human rights/gender-sensitive manner.	Outcome 3.1. Productive sectors strengthened to promote inclusive growth and local development especially in most disadvantaged areas	Goal 1: End Poverty Goal 2: Hunger, food security and sustainable agriculture Goal 10: reduce inequality Goal 8: sustainable economic growth, full employment, decent work Goal 9: inclusive and sustainable industrialization, innovation and infrastructure Goal 17: Partnerships for the goals	1.2.1. Percentage of population living below the national poverty line 9.2.1 Manufacturing value added as a percentage of GDP and per capita 9.3.1. Percentage share of small-scale enterprises in total industry value added
	Outcome 3.2. Improved equitable access to and delivery of quality social services, social protection and basic assistance.	Goal 4: Quality education and life-long learning Goal 2: Hunger, food security and sustainable agriculture Goal 3: Healthy lives and well being Goal 6: water and sanitation for all Goal 9: Innovation and infrastructure Goal 5: Gender equality & empower women and girls Goal 17: Partnerships for the goals	6.1.1. Percentage of population using safely managed drinking water services 6.3.1. Percentage of wastewater safely treated 3.b.1. Proportion of the population with access to affordable medicines and vaccines on a sustainable basis 4.3.1. Participation rate of youth and adults in formal and non-formal education and training in the last 12 months
	Outcome 3.3. Lebanon has improved environmental governance.	Goal 11: Sustainable cities and communities Goal 13: Combat climate change Goal 12: Responsible consumption and production Goal 15: Terrestrial, ecosystems	11.6.1 Percentage of urban and rural solid waste regularly collected and with adequate final discharge with regard to the total waste generated 7.2.1. Renewable energy share in the total final energy consumption 15.9.1 Number of national development plans and processes integrating biodiversity and ecosystem services values