

WHEN TO USE A MASK

For healthy people wear a mask **only if you are taking care of a person with suspected 2019-nCoV infection**

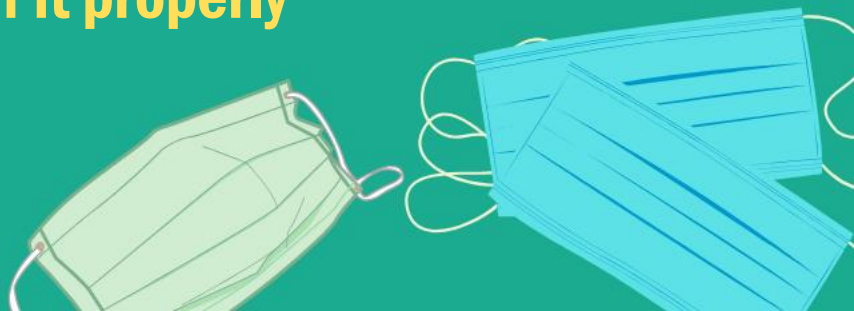
Wear a mask **if you are coughing or sneezing**

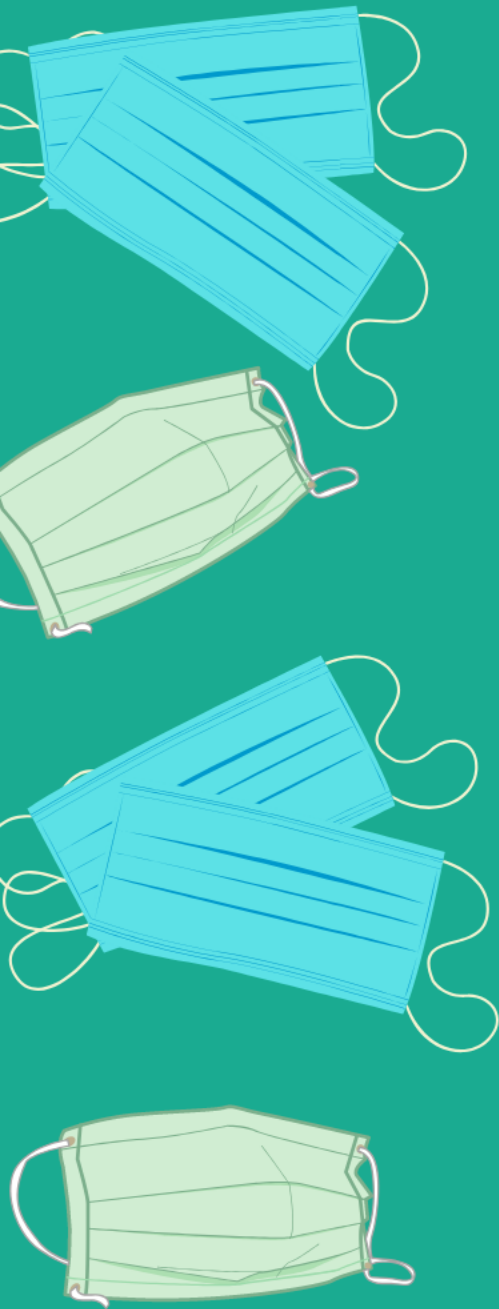
Masks are effective only when used **in combination with frequent hand-cleaning with alcohol-based hand rub or soap and water**

If you wear a mask then you **must know how to use it and dispose of it properly**



World Health
Organization





HOW TO PUT ON, USE, TAKE OFF AND DISPOSE OF A MASK



World Health
Organization

HOW TO PUT ON, USE, TAKE OFF AND DISPOSE OF A MASK

**Before putting on a mask,
clean hands with alcohol-
based hand rub or soap and
water**



HOW TO PUT ON, USE, TAKE OFF AND DISPOSE OF A MASK

**Cover mouth and nose
with mask and **make sure**
there are no gaps
between your face and
the mask**

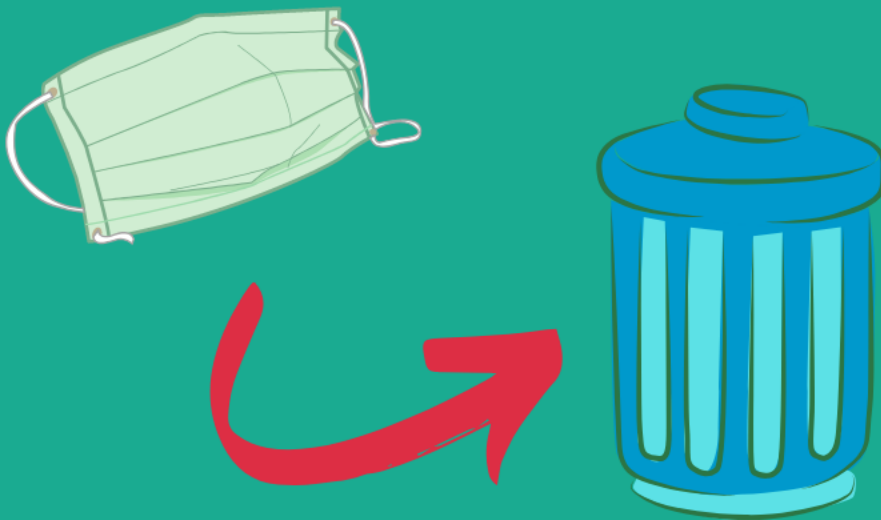


**Avoid touching the mask
while using it;
if you do, clean your
hands with alcohol-based
hand rub or
soap and water**



HOW TO PUT ON, USE, TAKE OFF AND DISPOSE OF A MASK

Replace the mask with a new one as soon as it is damp and do not re-use single use masks



HOW TO PUT ON, USE, TAKE OFF AND DISPOSE OF A MASK

To remove the mask: **remove it from behind** (do not touch the front of the mask); **discard immediately in a closed bin**; **clean hands with alcohol-based hand rub or soap and water**

