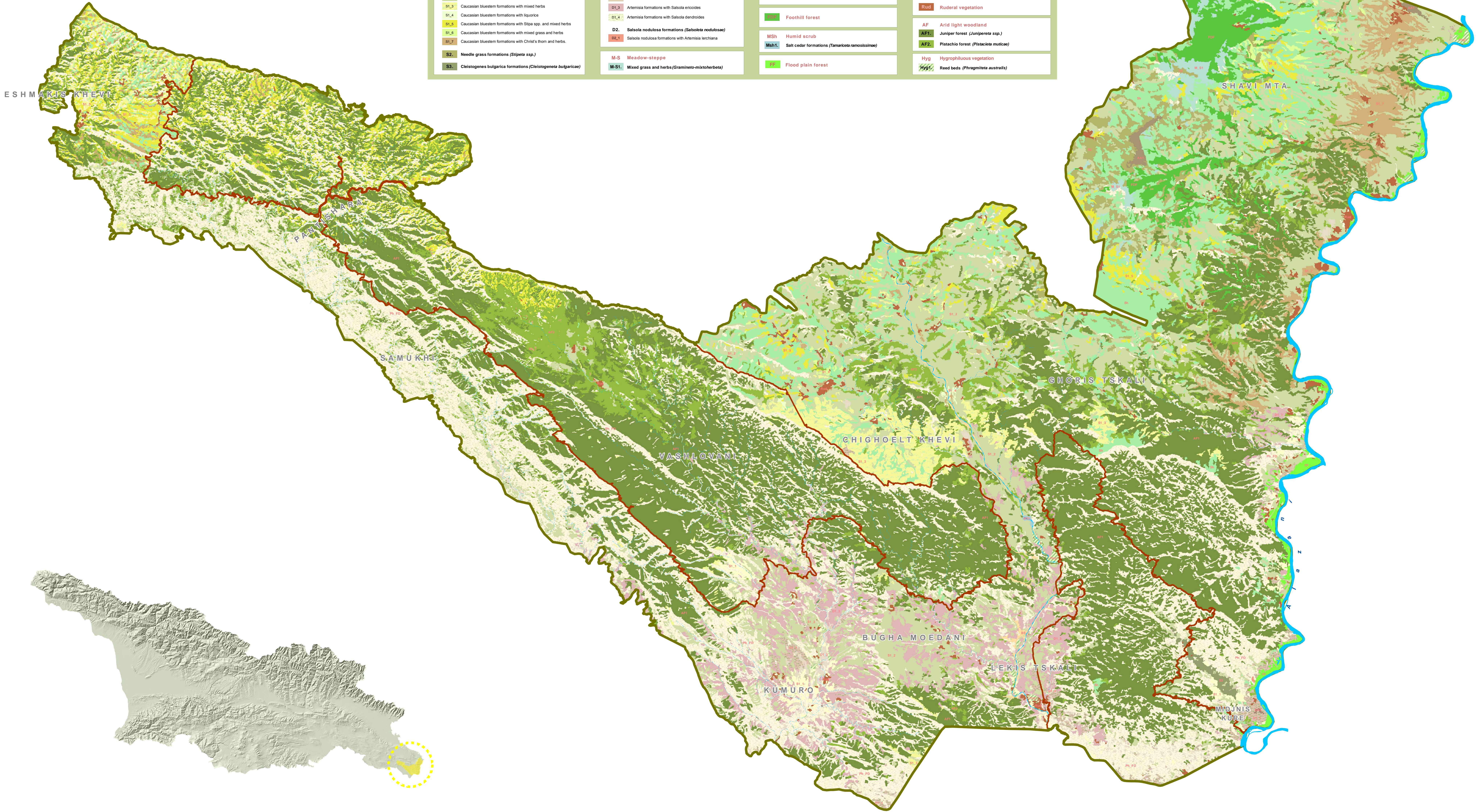


Dominant Vegetation Communities

S Steppe	D Lowland desert vegetation	Sh Shibliak-like hemixerophilous scrub	AA Vegetation of disturbed land
S1 Caucasian bluestem formations (<i>Botriochloa ischaemum</i>)	D1 Artemisia formations (<i>Artemisia lurchiana</i>)	Ph FD Phrygana-like vegetation and foothills desert	AA1 Spontaneous vegetation
S1.1 Caucasian bluestem formations with artemisia	D1.1 Artemisia formations with ephemerals and ephemerals	FF Foothill forest	AA2 Johnson grass formations (<i>Sorghumeta halpensis</i>)
S1.2 Caucasian bluestem formations with serpyllus herbs and ephemerals	D1.2 Artemisia formations with bluestem	MSH Humid scrub	Rud Ruderal vegetation
S1.3 Caucasian bluestem formations with mixed herbs	D1.3 Artemisia formations with <i>Salsola encoides</i>	MSh1 Salt cedar formations (<i>Tamarix ramosissima</i>)	AF Arid light woodland
S1.4 Caucasian bluestem formations with liquorice	D1.4 Artemisia formations with <i>Salsola dendroides</i>	F Flood plain forest	AF1 Juniper forest (<i>Juniperus</i> spp.)
S1.5 Caucasian bluestem formations with Stipa spp. and mixed herbs	D2 <i>Salsola nodulosa</i> formations (<i>Salsola nodulosa</i>)	Hyg Hygrophilous vegetation	AF2 Pistachio forest (<i>Pistacia mutica</i>)
S1.6 Caucasian bluestem formations with mixed grass and herbs	D2.1 <i>Salsola nodulosa</i> formations with <i>Artemisia lurchiana</i>	Hyg1 Hygrophilous vegetation	Hyg2 Reed beds (<i>Phragmites australis</i>)
S1.7 Caucasian bluestem formations with Christ's thorn and herbs	M-S Meadow-steppe		
S2 Needle grass formations (<i>Stipeta</i> spp.)	M-S1 Mixed grass and herbs (<i>Gramineto-mitoheteta</i>)		
S3 <i>Chistogenes bulgarica</i> formations (<i>Chistogenes bulgarica</i>)			



LEGEND

- Vashlovani National park
- Vashlovani Nature Reserve
- Water bodies
- Bare soil

Projection Name: UTM
Spheroid: WGS_1984
Datum: WGS_1984
Zone: 38 North

Map Scale For A8 : 1 : 35 000

VEGETATION OF VASHLOVANI PROTECTED AREAS



Empowered lives.
Resilient nations.