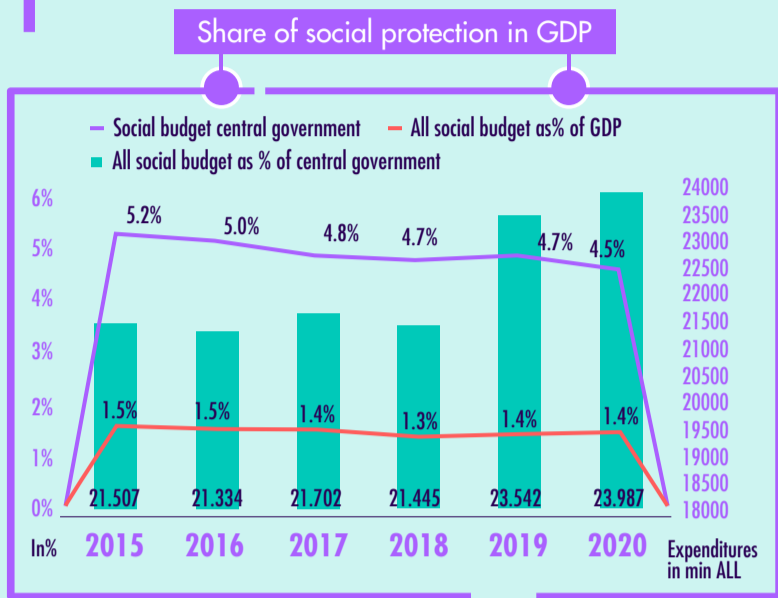


## QUICK FACTS

# Central and Local budget spending on Social Care Services

### 1 Share in GDP and total public spending at central level



Social protection budgets at the central level have steadily increased in nominal terms, but have decreased in relative terms. The pace of growth of general government expenditures has been faster than the increase in social protection expenditures during the recent years.

#### 1.1 Share in GDP



#### Social spending

4,7% of the state budget in 2018 & 2019  
4,5% of the state budget in 2020

#### 1.2 Spending in Social Protection

The social sector budget continues to be dominated by **cash benefit** outlays



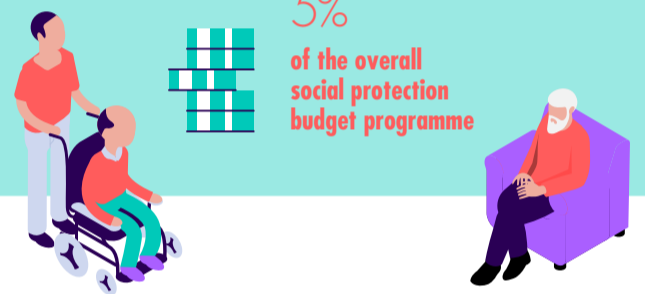
#### Cash benefits

95% of the overall budget in 2018 and 2019



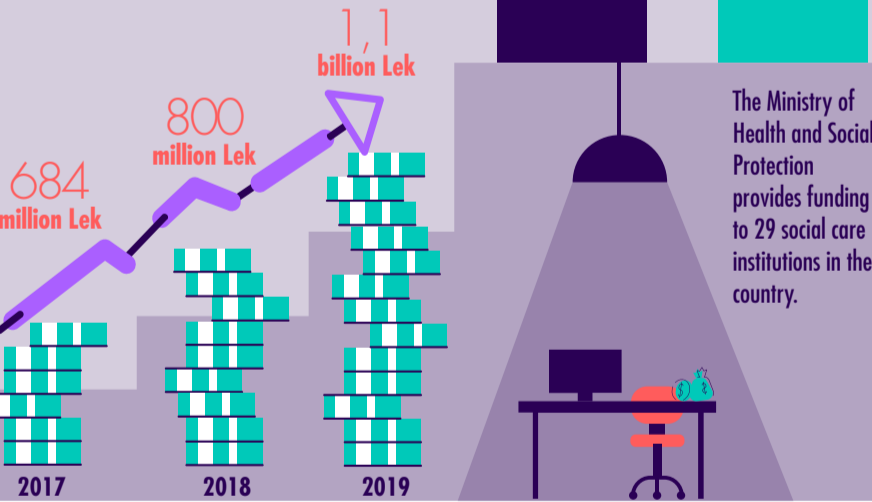
#### Spending in social care services

5% of the overall social protection budget programme



### 2 Spending for social care services at local level

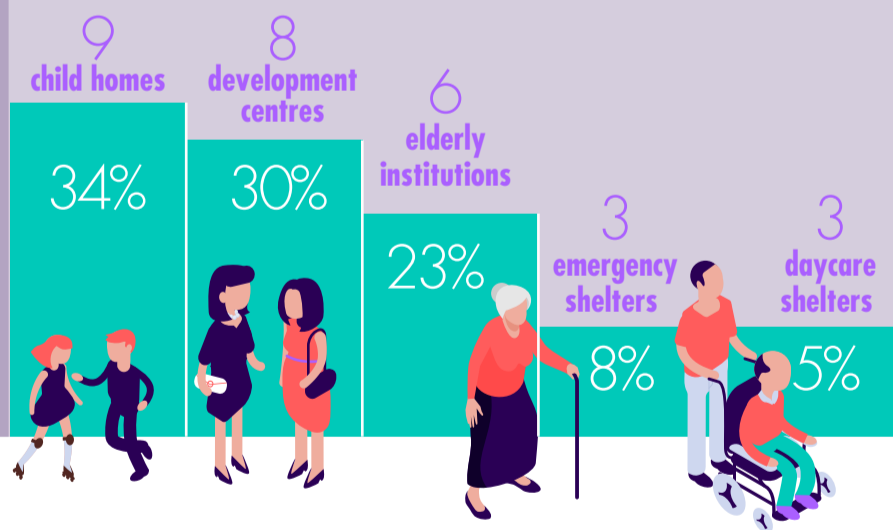
Local government expenditure on social care services has increased dramatically.



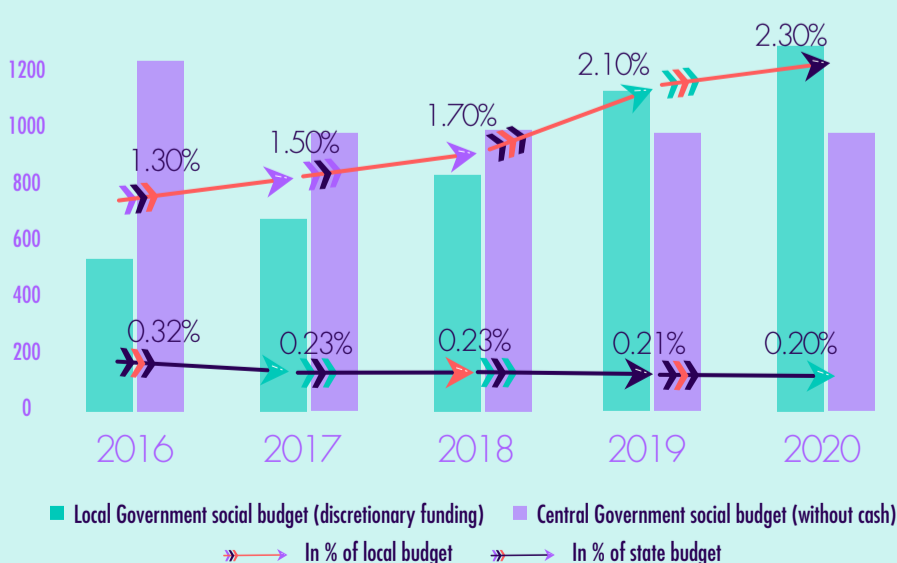
The Ministry of Health and Social Protection provides funding to 29 social care institutions in the country.

#### Composition of social care expenditure

Year	Type	Expenditure (million Lek)			
		Capital expenditure	Personnel cost	Operation and Maintenance	Other Transfers
2017	LG	80	366	105	134
	CG	76	584	328	60
2019	LG	61	666	180	228
	CG	100	546	342	80



### 3 Social spending in central and local budget



Local government expenditure on social care services has steadily increased.

