

# UNDP's Integrated Development Response to Prevent Violent Extremism

in the Sahel, Lake Chad Basin, Great Lakes and Horn of Africa

## Fragility Drivers

1

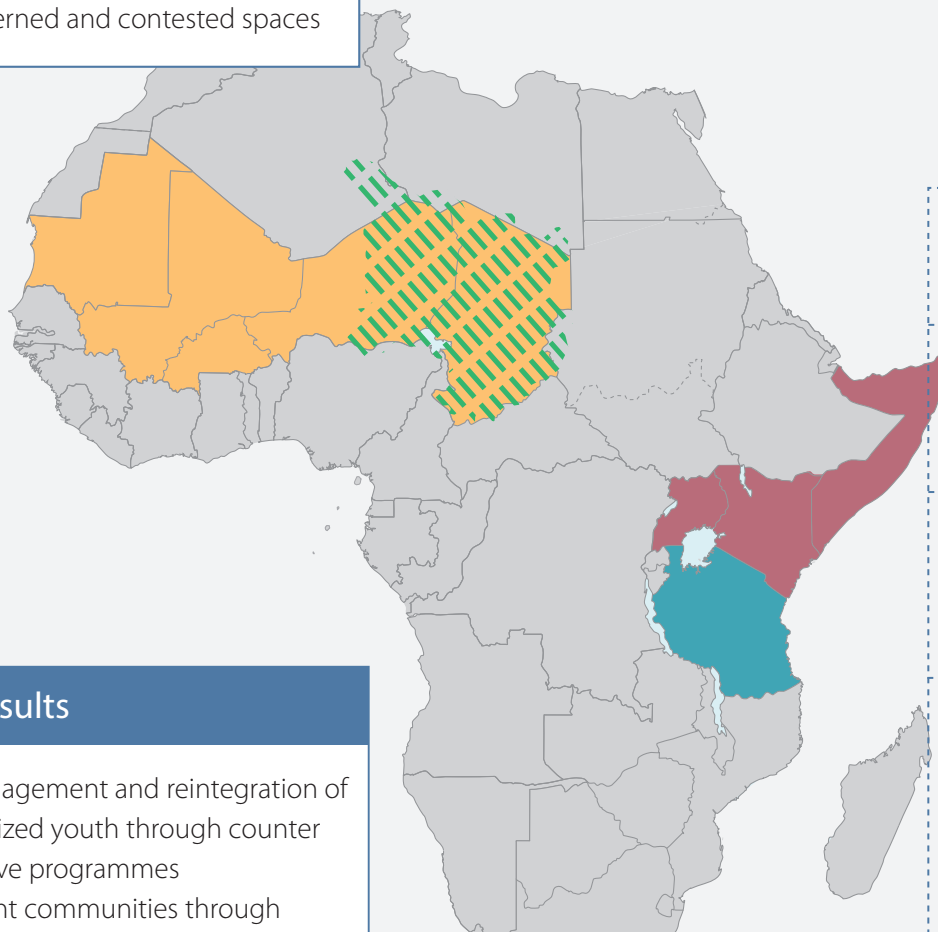
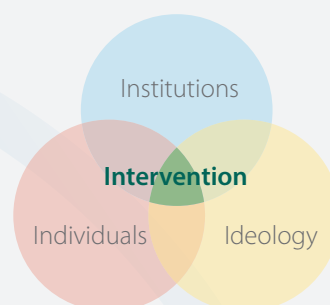
- Limited livelihood choices for a bulging youth demographic
- Social political marginalization
- Adversarial/poor community relations
- Sub-national economic and social development disparities
- Ungoverned and contested spaces

## Strategic Response

2

Addressing **fault lines, risks and threats** in the socio-economic cultural and the institutional landscape at community, national and subregional levels

## UNDP's Theoretical Framework of action



### G5 SAHEL COUNTRIES

UN Integrated Strategy for the Sahel

### LAKE CHAD BASIN

Coherent Programme Responses to Boko Haram in Lake Chad Basin

### GREAT LAKES

Strategy for Supporting the Great Lakes Peace, Security and Cooperation Framework

### HORN OF AFRICA

Strengthening the Capacity of the Intergovernmental Authority on Development (IGAD) in Building Resilience in the Horn of Africa

## Results

- Disengagement and reintegration of radicalized youth through counter narrative programmes
- Resilient communities through inclusive and effective local governance;
- Peaceful coexistence through social cohesion and peacebuilding;
- Strengthened national and regional early warning capacity to mitigate cross border threats;
- Enhanced livelihoods through Communities and religious institutions resilience to the effects of violent extremism.

## How

3

At **national and community** levels, support livelihoods, governance and peacebuilding pathways to engender progress along the continuum of stabilization to transition towards sustainable development.

At **sub-regional levels**, mitigate cross border threats to community security, trade and development, establish early warning capacity and support regional platforms to develop coordinated and rights based responses.