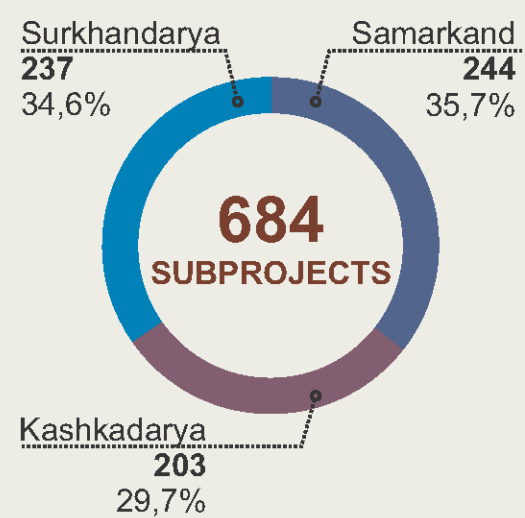
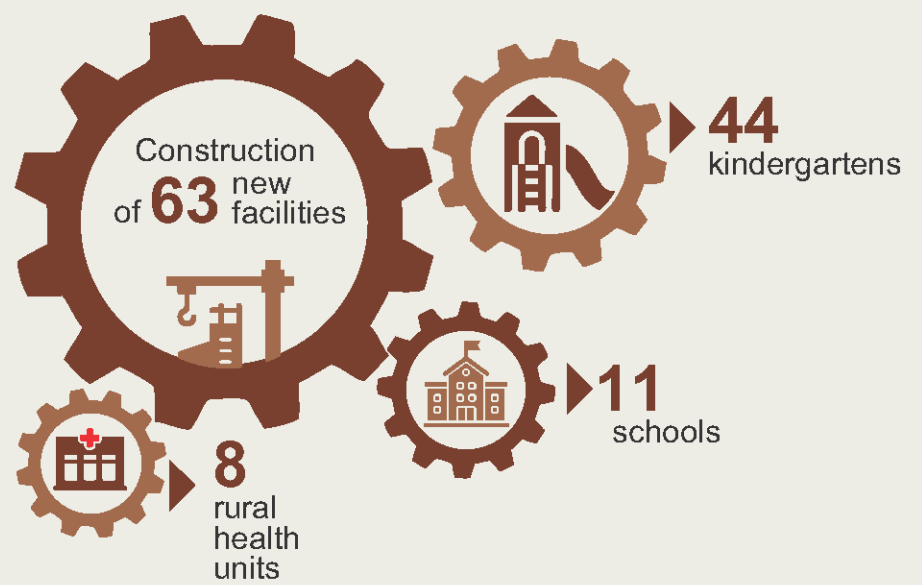
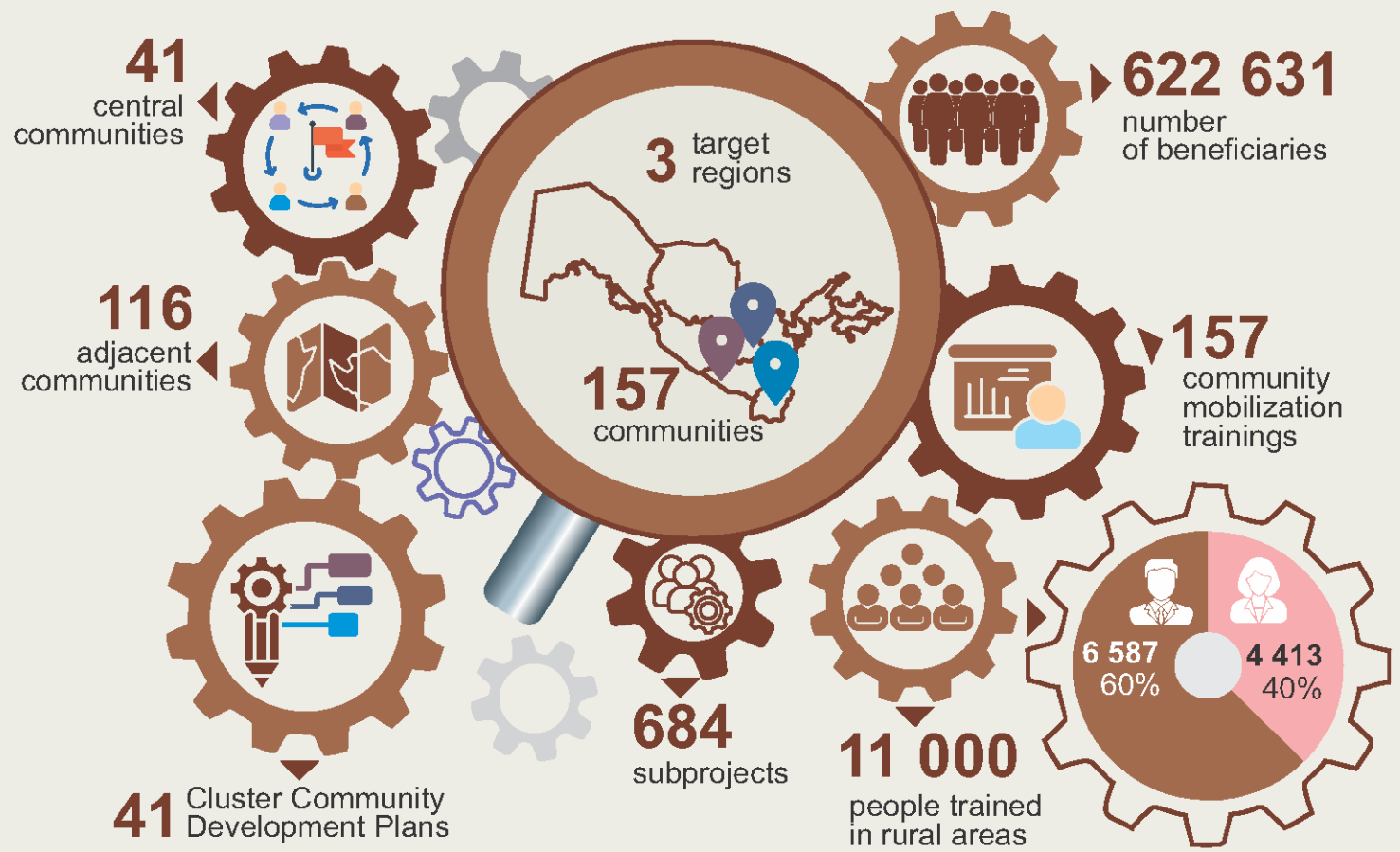


COMMUNITY DEVELOPMENT PLANS

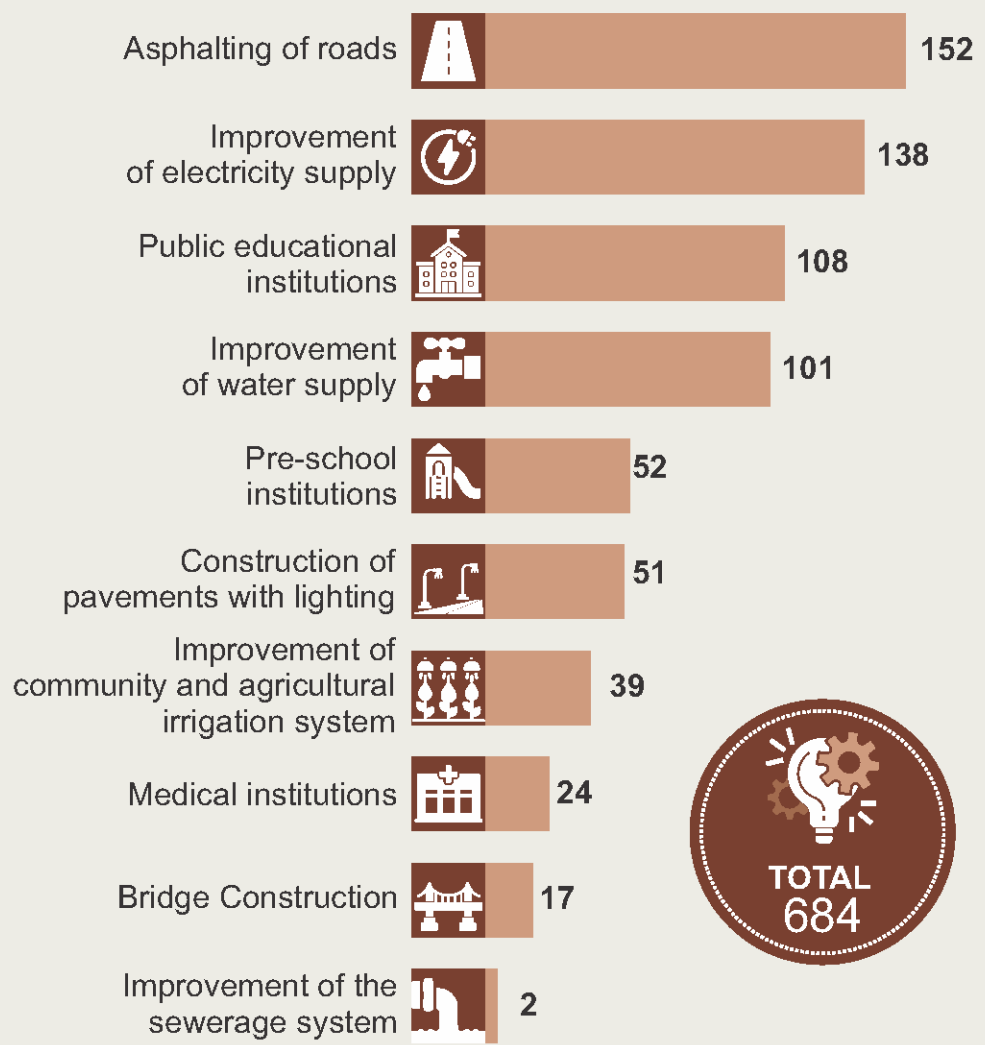
SAMARKAND, KASHKADARYA AND SURKHANDARYA REGIONS

2025

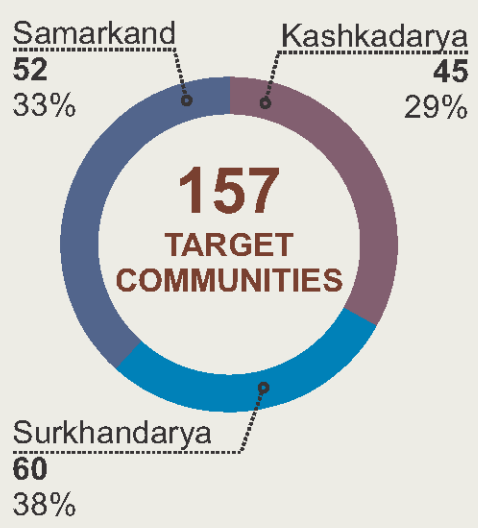
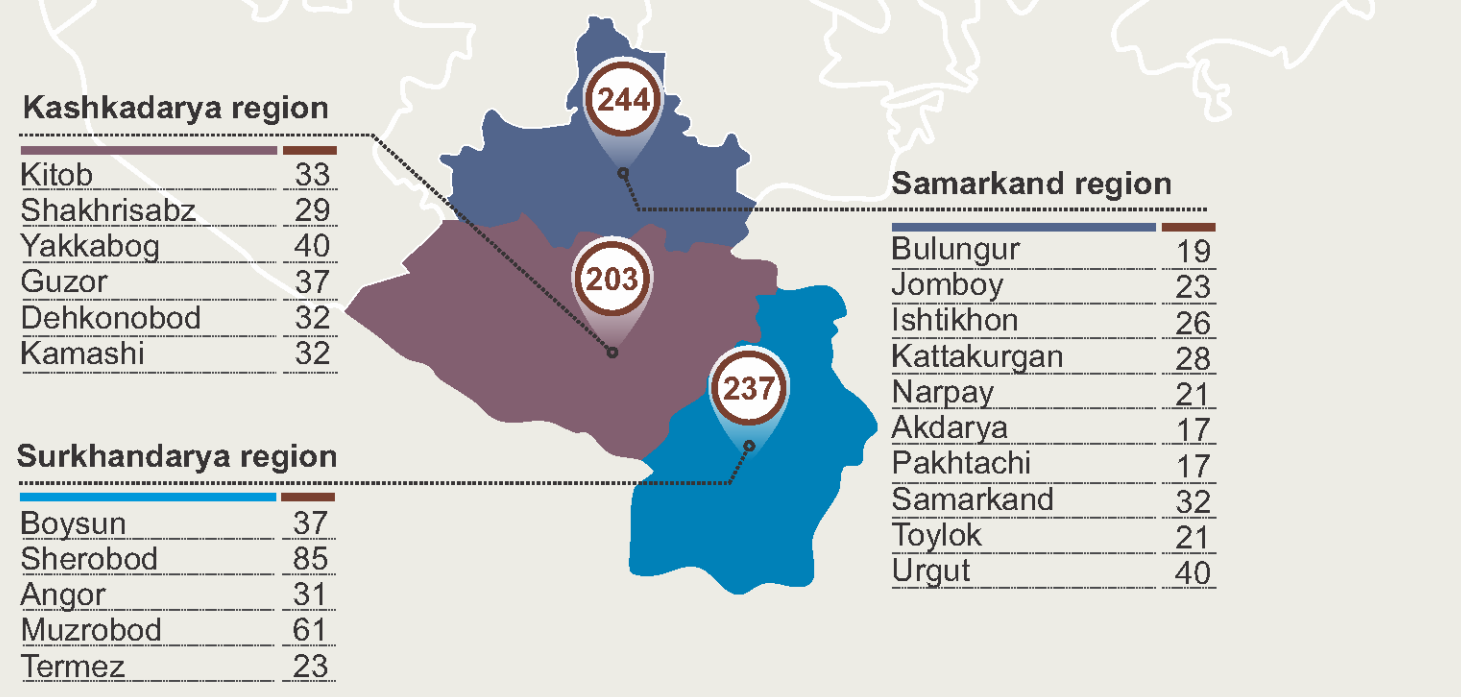
Component B: Consultancy services for rural infrastructure development – Community empowerment of the "Integrated Rural Development" project



SUBPROJECTS BY FOCUS AREA (3 REGIONS)



TARGET REGIONS AND SUB-PROJECTS



TOTAL 684