

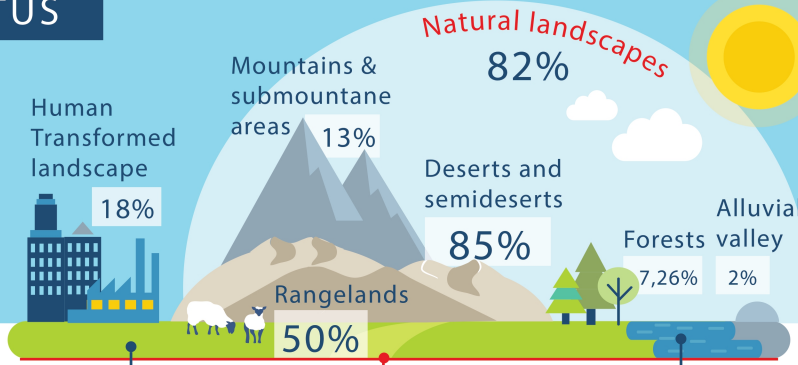


CURRENT STATUS

Flora
4300 species

- 39.5% Fodder plants
- 18.6% Medicinal plants
- 15% Ether-oil plants
- 12% Food plants
- 8% Endemics
- 6.2% Ornamental plants
- 4.6% Culinary herbs and Spices
- 3.5% Dye plants
- 2.3% Saponin plants

Human Transformed landscape 18%



Land surface 95%

LANDSCAPES
447,400 km²
total area

Water surface 5%

2 Rivers;
more than 500 Lakes & reservoirs

National System of Protected Areas (PAs) covers 14,08% of the total landscapes

- 7 natural reserves
- 1 national park
- 1 natural nursery
- 12 species management areas
- 12 natural parks
- 2 biospheric reserves
- 4 Ramsar sites

only 17 of 52 important bird areas (IBAs) are in protected areas

only 12 of 36 key biodiversity areas (KBAs) are in protected areas

Fauna
15614 species

Invertebrate 95%

- 850 protozoa
- 1179 roundworms
- 533 flatworms
- 223 mollusks
- 12,000 arthropods
- 61 annelids

Vertebrate 5%

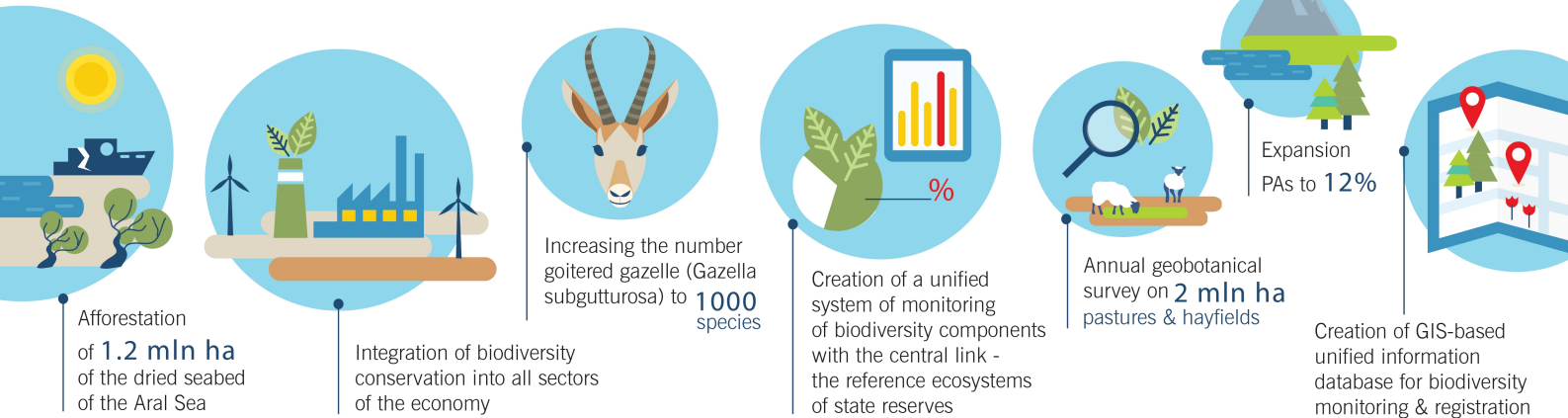
- 3 amphibians
- 60 reptilians
- 460 avian
- 84 fish
- 107 mammals

Endemic species:

- 8 birds
- 30 reptiles
- 15 mammals

NATIONAL PRIORITIES

Biodiversity Conservation (NBSAP 2019-2028)



New Uzbekistan Development Strategy 2022-2026

Goal 24: Active introduction of "green economy" technologies in all sectors & increasing the energy efficiency by 20%

Goal 79: Eliminate & mitigate existing environmental problems that harm the population's health

Goal 80: Protect the ecological & environmental integrity by improving ecological conditions in cities & districts through a nationwide project - "Green Space"

Goal 81: Expand forested regions

Green Economy Transition Strategy 2022-2030

Green, low carbon development of industry & the economy

Support for people & places most impacted by the transition

Innovation & effective, green public investments

Capacity building & human capital development

Enabling policy environment & effective institutions

Sustainable and inclusive urbanization

Strengthened response to disaster & climate change

Green finance

Sustainable & efficient use of natural resources