

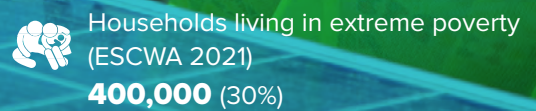
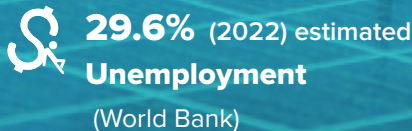
# UNDP - Supporting Host Communities in Lebanon (2014 - JULY 2023)



In the aftermath of the Syria crisis, Lebanon continues to host more than 1.5 million displaced Syrians, the largest number of displaced population per capita in the world. The recent unfolding situation in Lebanon at the political, economic, and financial levels, as well as the impact of the COVID-19 pandemic and Beirut Blast, are increasing pressures on host communities and refugee populations residing in the country.

Data from UNDP's latest Tension Monitoring reports shows that there exists a dramatic increase in risks to social stability both at intercommunal and intracommunal levels. COVID-19 and the Beirut Blast have exacerbated the impact of the socio-economic and financial crisis in the country.

Gender disparities and unequal conditions for disadvantaged groups have increased, with women's unemployment rate increasing to almost double in light of the compounded crises.



UNDP support to host communities reached **5,637,922** of the most vulnerable people through **livelihood** and **local economic development interventions** and enhanced **basic services delivery** across Lebanon.

## Total Beneficiaries



**5,637,922**

**3,983,303** Lebanese



♂ 1,953,379 ♀ 2,029,924

**1,654,619** Syrian



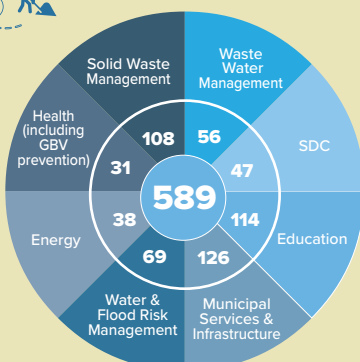
♂ 788,877 ♀ 865,742



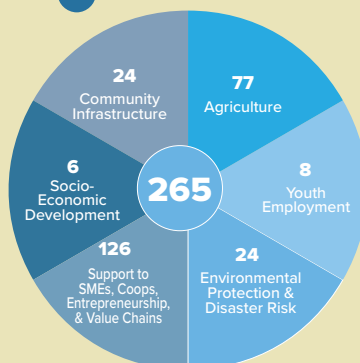
## 854 Projects Implemented



### Basic Services

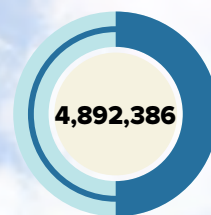


### Livelihoods



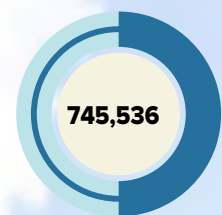
## Beneficiaries by sector

### Basic Services



Lebanese 3,450,331  
 Syrian 1,442,055

### Livelihoods



Lebanese 532,972  
 Syrian 212,564





## Jobs Supported



**33,584** jobs maintained

## Workers



**1,572,214** Total Worker Days generated since 2017

**1,020,769** Lebanese **534,186** Syrian **17,259** Other



**24%** Infrastructure



**39%** Livelihoods



**240** Municipalities

**54** Unions/clusters



## Total Funds

**USD 248,593,210**

## Mechanisms for Stability and Local Development

Projects are identified through the Mechanisms for Stability and Local Development (MSLD) process, a participatory conflict sensitive approach for mapping local priorities and triggers of instability. MSLD processes were launched in **149** communities and **12** clusters to date.

To enhance the management capacity of local authorities and increase sustainability and impact of community interventions, municipalities are provided with technical support and training on operation and management skills.

## National Adaptive Response 2020-2023

Starting 2020, LHSP has adapted its strategy and reprogrammed part of its interventions to respond to the emerging priority needs, (COVID-19, Beirut Blast, economic crisis) where livelihood and environmental interventions were identified as the most relevant and urgent.



Cash for work in PPE production, agro-food production, farming, and housing restoration after the Beirut Blast generated **421,272** worker days for **10,491** workers out of which **5,071** were women (**48%**)



**959** MSMEs, **214** Cooperatives, **40** CBOs, **17** Start-ups, and **3,099** Farmers were provided with in-kind assistance as well as **1,640** Lebanese and Syrian women were equipped with professional toolkits and capacity-building in the form of TVET to supply them with income generation opportunities.



Cash for work activities in forest management generated over **394,075** worker days for more than **9,522** workers out of which **2,332** were women (**24%**), in more than **100** municipalities nationwide.



Eight Government-led COVID-19 isolation centres supported



National awareness campaign on COVID-19 preventive measures disseminated to all municipalities and towns across Lebanon during the early stages of deconfinement



## Strengthening Local Governance



To enhance transparency and accountability in municipal work, increase trust between citizens and municipalities, and promote good governance, **4 Unions of Municipalities** including **40** Municipalities in addition to **23** Civil Society Organization across Lebanon are being capacitated on:

- Corruption Risk Factors and Management
- Good Governance
- Access to Information and other laws related to transparency
- Promoting and strengthening the role of women in municipal work






## Gender Achievements

-  Forest Management: **2,332**
-  PPE Production: **800**
-  Agriculture and Agrofood: **4,271**
-  Women in Infrastructure: **712**

## Women's Economic Empowerment

Improving women-led businesses and cooperatives' productivity, competitiveness, and increasing access to assets

 **51** cooperatives, **4,448** women benefited from support to cooperatives, **180** SMEs, and **21** start-ups

Women have strengthened capacity to integrate into the labour market through selected value chains

### Enhancing Women's Technical Skills Development

**2,920** women across agricultural and non-agricultural value chains

**267** women in marketing and e-commerce

### Supporting Women's Leadership & Communication Development


**2,316** women reached to date


### Solar Employability Program for Women Engineers in Renewable Energy


**60** women engineers enrolled in local universities





## Increasing public support and improving the enabling environment for women's economic empowerment

 **367** women and **329** men from business entities sensitized on PSEA and gender equality


 **102** HR managers, employers, and legal experts initiated the development of anti-sexual harassment strategies to create a safe working environment


 **251** women (160 Lebanese and 91 Syrians) and **85** men (45 Lebanese and 40 Syrians) were supported to enhance equitable and non-violent relationships through participating in **17** community-based gender-based violence prevention sessions

 **75** municipal staff and community leaders (12 female municipal staff, 19 male municipal staff, 35 female community leaders and 9 male community leaders) were supported to build capacities and commitment for taking action promoting gender equality and an environment free of GBV

 Art competition for women creators to advocate for women's economic rights by using their artwork to raise awareness on gender parities, capture the challenges, and lead the conversation towards a more equal world

## Increasing Municipalities' skills, knowledge, and means to be more actively involved in local economic development

 **20** municipalities have completed gender audits to initiate processes towards institutionalizing gender equality and support women's economic empowerment

 **20** women's economic initiatives by municipality and communities completed