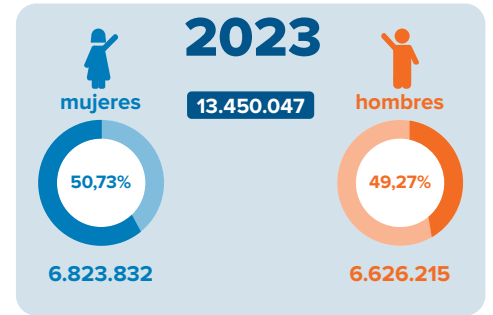
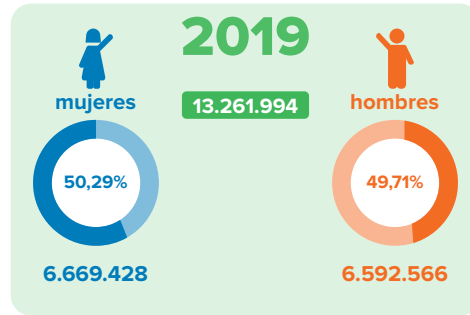
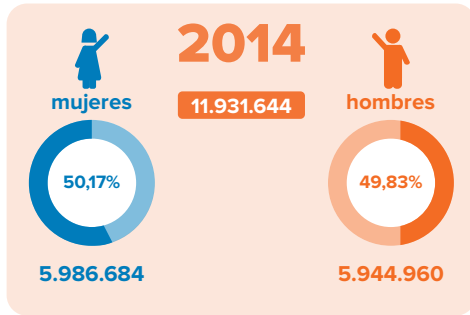
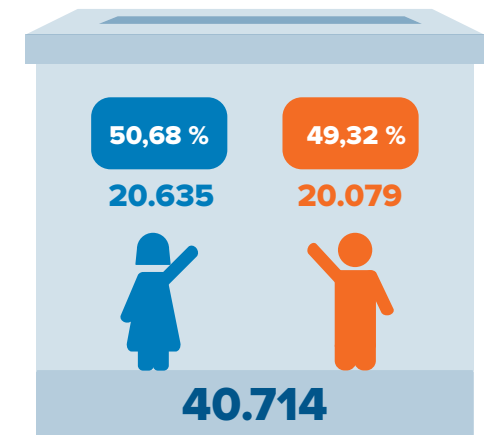
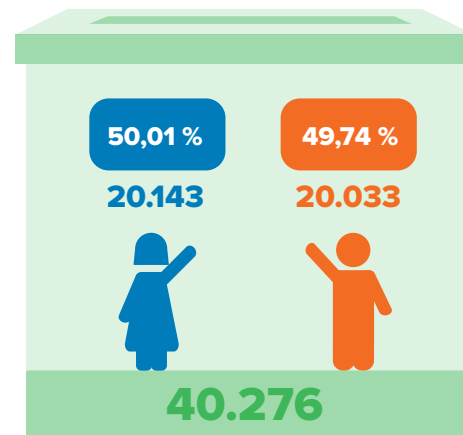
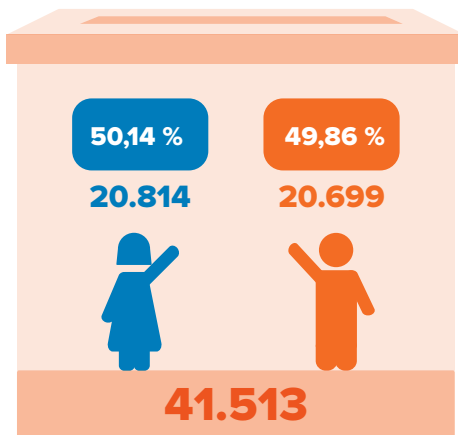


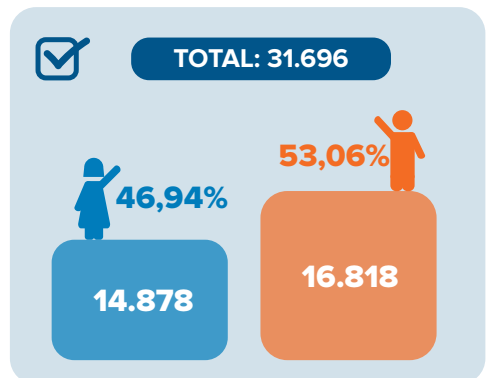
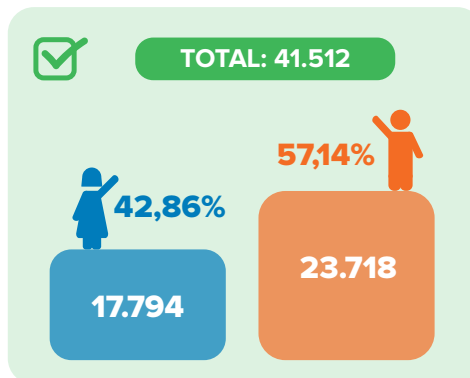
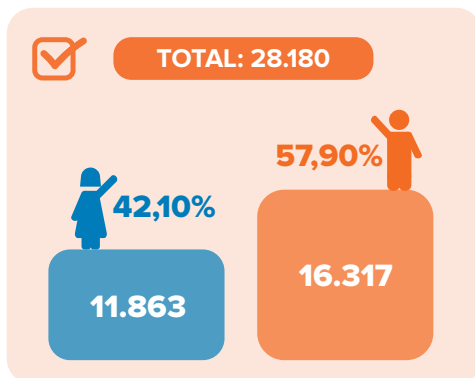
Padrón electoral



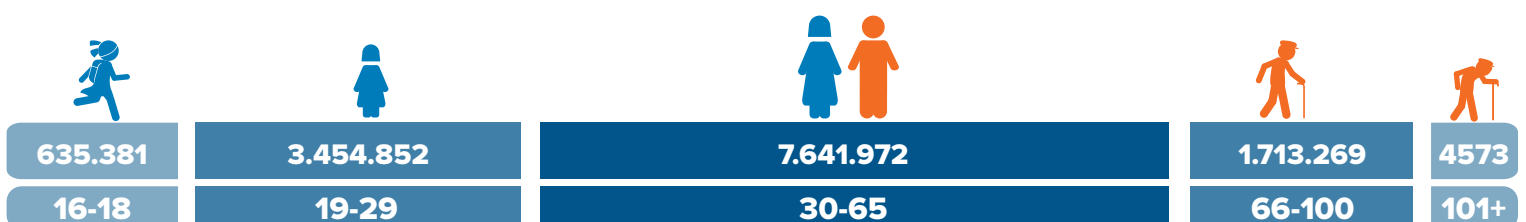
Juntas receptoras



Candidatos y Candidatas Principales



Edades de los votantes 2023



Número de votantes

2014



11.931.644
Votantes

2019



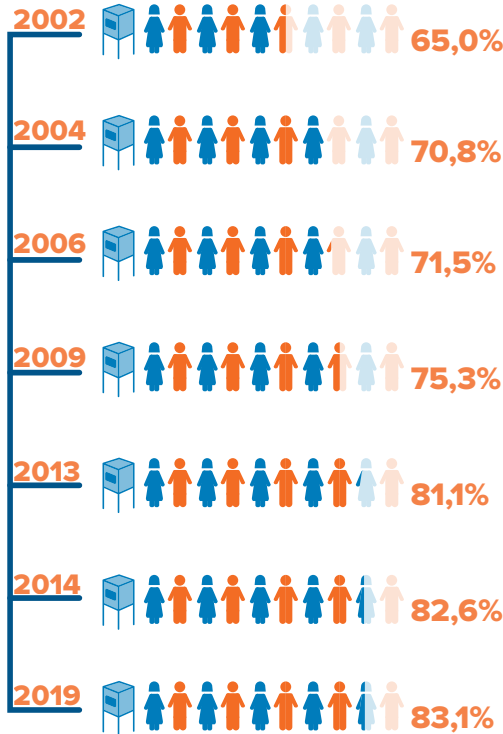
13.261.994
Votantes

2023



13.450.047
Votantes

Participación Electoral



Dignidades a elegir 2023

Alcaldes

221 Alcaldes/as a nivel nacional

Prefectos

23 Prefectas/os
23 Viceprefectas/os

Consejales

864 Consejales Urbanos
443 Consejales Rurales

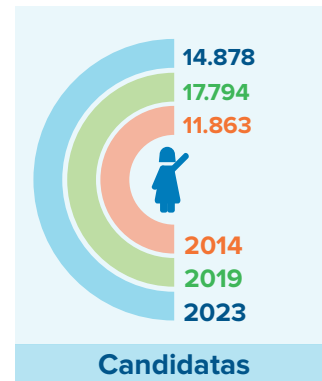
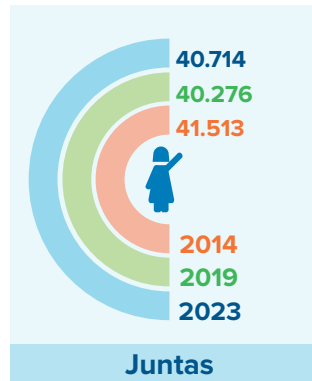
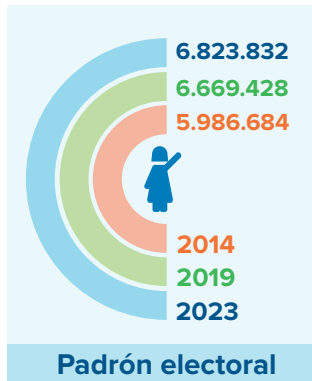
Vocales de las Juntas Parroquiales

4.109 Principales
4.109 Suplentes
Vocales de las Juntas Parroquiales Rurales

CPCCS

7 Consejeras/os
Consejo de Participación Ciudadana y Control Social

Mujeres y las elecciones



Proporción de autoridades electas por género entre 2014 y 2019

