



# GEF-SGP COUNTRY PROGRAMME STRATEGY OPERATIONAL PHASE (OP) SEVEN GHANA



**COMMUNITY ACTION GLOBAL IMPACT**



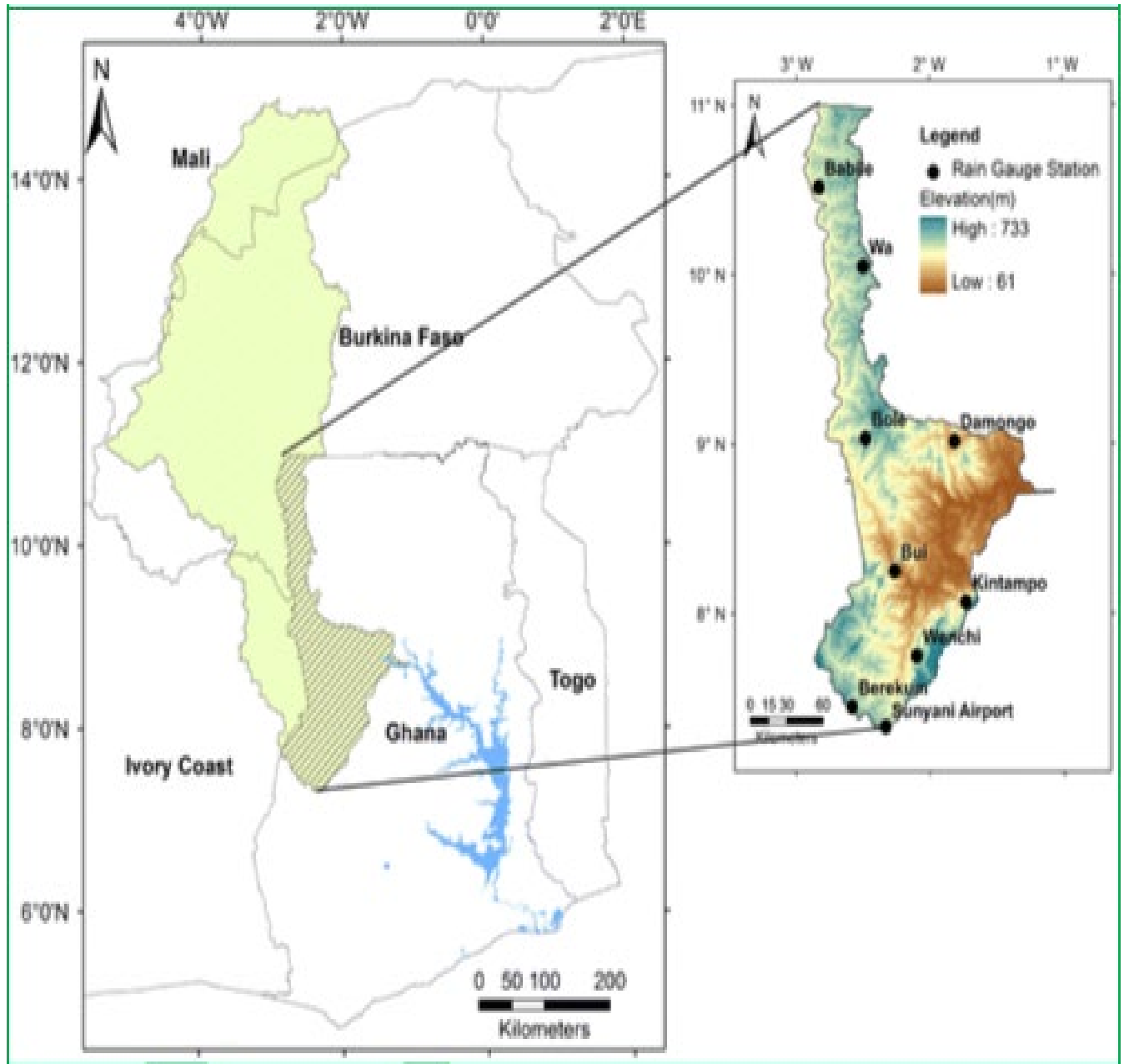


Figure 1: OP7 TARGETED BLACK VOLTA BASIN

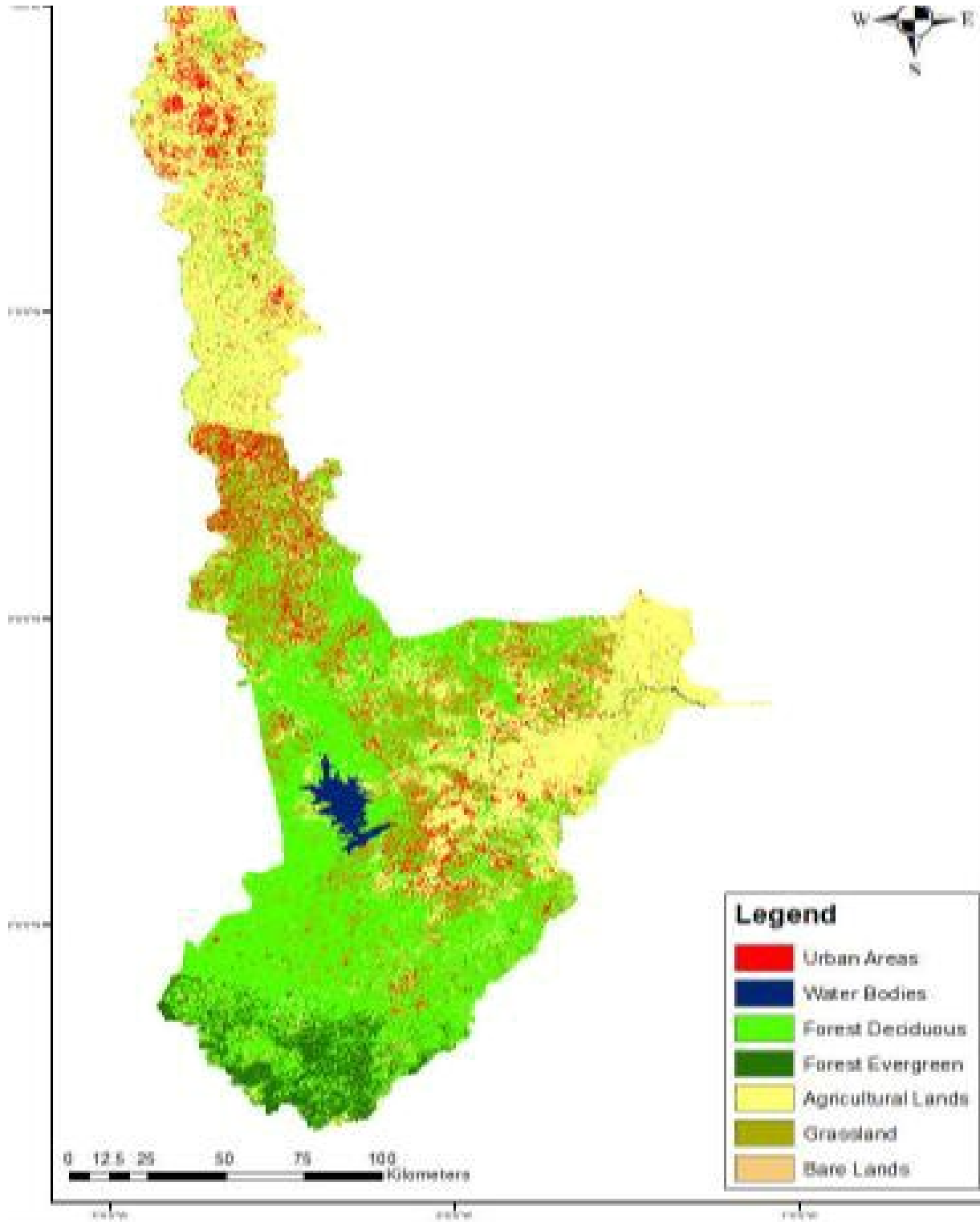


Figure 2 OP7 Priority Socio-ecological Production Landscape of the Black Volta Basin

# INTRODUCTION

The Small Grants Programme (SGP), is a corporate programme of the Global Environment Facility (GEF) that provides financial and technical support to community-led initiatives that address global environmental and sustainable development issues. Launched in 1992, the programme is implemented by the United Nations Development Programme (UNDP) on behalf of the GEF Partnership. It is specifically designed to generate local action by empowering civil society organizations (CSOs) and local communities, including indigenous people and women. It aligns its operational phase strategies with those of the GEF and co-financing partners and provides a global portfolio of *innovative, inclusive, and impactful* projects that address global environmental and sustainable development issues.

The GEF Small Grants Programme in Ghana has successfully gone through six operational phases supporting community level initiatives that simultaneously promote environmental management, sustainable economic growth and social development within the GEF focal areas. The programme integrates poverty reduction as a critical entry point in environmental management and human development.

The seventh operational programme of the GEF Small Grants Programme in Ghana will target the socio-ecological production landscape of the Black Volta Basin. The programme will contribute to the transformational changes in biodiversity conservation, climate change mitigation and adaptation, sustainable land management and chemical and waste management within the landscape.

## KEY FACTS

**OP6 INVESTMENT (2016-2019)** value was US\$3.6 million in cash and co-financing from communities, philanthropists, civil society groups, grantees and the private sector.

**PORTFOLIO OP6:** 44 community projects were implemented within the Black Volta Socio-economic production landscape.

**CATALYTIC SUPPORT:** Grants ranging from US\$25,000 to US\$50,000 were given directly to local communities as seed money to implement new ideas and innovative enterprises for replication and scaling up. Special support was directed towards piloting community small scale mercury-free gold mining.

**SOCIAL INCLUSION:** Grant-making activities in innovative projects were directed towards persons with disabilities, women-led enterprises, and minority women's groups within the Black Volta Basin.

**POLICY IMPACT:** Build capacities of Civil Society Organizations (CSOs) to participate in decision-making, and to engage in dialogue and advocacy.

**OPERATIONAL STRUCTURE:** The National Steering Committee (NSC) provides a decentralized management responsibilities to the programme which encourages maximum country and community level ownership of the initiatives. Decisions about programme strategies and project approval are taken at the country level.

**NETWORKING:** The programme promotes civil society networks at community, national and global levels.

# OUR OP7 STRATEGIC OUTLOOK

The priority geographic areas within the Black Volta Basin landscape selected for the OP7 programme activities are: Nadowli, Lawra, and Wa-West districts (Upper West Region), Banda, Tain (Bono region), Bole, Sawla-Tuna-Kalba districts and West Gonja Municipal (Savannah Region). See fig 3.

Thematically, the strategic initiatives will include:

- a) Community-based conservation of threatened ecosystems and species

The grants at the landscape levels will focus on the sustainability of Indigenous and Communities Conserved Areas (ICCAs) (sacred groves), private protected areas, conservation of corridors and buffer zones around the BVB and major tributaries using bamboo and other fast-growing species, and the establishment of Community

Reserved Management Areas (CREMAs). The programme will promote the sustainable use of biodiversity by utilizing ecotourism processing of biodiversity products, food security, sustainable commodity value chain, and others. Support would be given towards making the existing CREMAs move beyond aid. It will facilitate partnership for effective utilization of the resources under the public-private sector partnership.

- b) Sustainable agriculture and fisheries, leading to food security



The programme will build on the innovative climate smart agro-ecology to support sustainable and ecological agricultural production which provides food security, nutrition, and health benefits in addition to secure and sustainable livelihoods for small-holder farmers, cooperatives, and artisanal fishers. It will link local producers with better market (national and international) sources and promote the use of certification systems, and eco labelling as the means. The programme will also contribute to greening of supply chains for

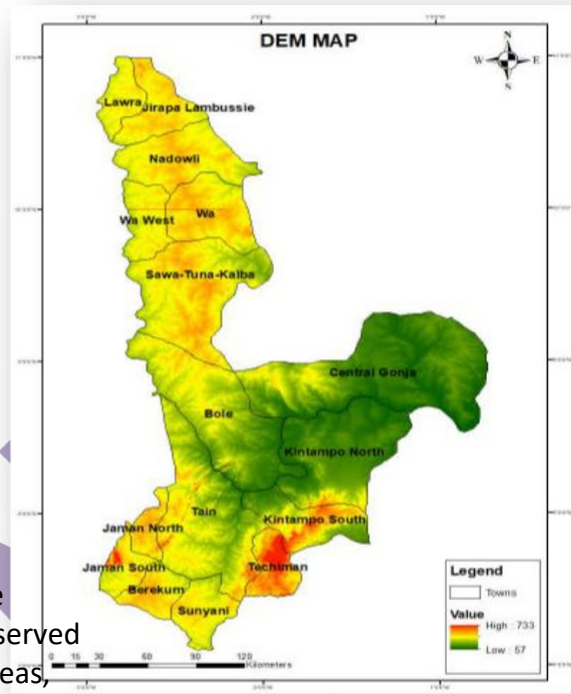


Figure 3 Selected Districts for OP7

local products as well as generation of value addition for local producers. These initiatives will contribute to increasing ecological connectivity, reducing forest fragmentation, and improving forest biodiversity values at landscape levels. It will promote good management practices in community smallholder forestry and farmlands, and develop sound local level land management policy with the view to increasing agriculture resilience to climate change.

c) Low Carbon Energy Access Co-benefits

The programme will focus on grassroots energy efficiency and renewable energy solutions that can help meet the increasing demand for energy in a sustainable manner, while at the same time generating multiple co-benefits contributing to achievement of the Sustainable Development Goals (SDGs). The programme will support the mainstreaming of eco-certification sustainable wood fuel production and efficient renewable energy technologies



within the landscape for improved livelihood. The approach in this initiative will be directed at providing access to affordable modern energy services necessary for development, while safeguarding environmental and social benefits.

d) Local to Global Coalitions for Chemicals and Waste Management

The programme will focus its support towards plastics/solid waste management and will



establish systems of local certification of organic producers in vegetable through producer-consumer agreements and eventually graduating to national government policy that will influence markets. It will seek to promote an alternative to mercury use in artisanal and small-scale gold mining by popularizing community mining concept as a model for small-scale gold mining in Ghana. Activities will include support for innovative, affordable and practical solutions to chemicals and waste management in a joint effort with partners including government agencies, research institutions, private sector and international agencies.

# OUR KEY OBJECTIVES

The OP7 programme seeks to:

- i. promote innovative solutions as well as traditional/local knowledge to safeguard the global environment;
- ii. systematically develop capacity and platforms among local communities, civil society groups, and other stakeholders as a key driver for environmental management and sustainability;
- iii. focus on maximizing global environmental benefits (i.e. key biodiversity areas, clean technologies, etc.) through working with communities and local livelihood issues;
- iv. strengthen and expand partnerships, particularly with government/policymakers and private sector as well as non-GEF programmes, for scaling up and sustainability of proven technologies.



# OUR APPROACH

THE GEF SMALL GRANTS PROGRAMME is rooted in the belief that global environmental problems can best be addressed if local people are involved and there are direct community benefits and ownership. The programme operates on the premise that sustainable development is achieved when **PEOPLE**



The programme links global, national, and local issues through a transparent, participatory, and country-driven approach to project planning, design and implementation.

# GRANT-MAKING OUTSIDE THE PRIORITY LANDSCAPE

In addition to grant making, the SGP plays a crucial role in providing strategic services to the civil society and community organizations by enhancing their institutional, technical, and financial capacities; develop platforms and networks; and expand partnerships and resource mobilization for scaling up. The programme will devote 30% of its grants outside the landscape targeting innovative initiatives. The following activities would be supported under GEF-7:

*a) CSO-Government-Private Sector Dialogue Platform*

The programme will expand its CSO-Government Dialogue Platforms launched in GEF-6 towards a greater engagement with the private sector as a means of leveraging its potential to invest and support sustainability. These platforms will also provide opportunities to discuss possible shifts in relevant policies and practices to promote sustainability. Selected number of CSO-Government-Private Sector Dialogues would be launched with the aim to expand innovative local solutions and bring them to scale, as well as to promote enabling environment and foster strategic coalitions and partnerships.

*b) Promoting Social Inclusion, including gender equality and women’s empowerment*

The programme will continue to promote social inclusion and equity by working and engaging with women, youth, indigenous peoples and the disabled. The SGP will continue its work with indigenous peoples and persons with disabilities in plastic waste management to enhance and strengthen their organizational capacity and leadership to access dedicated resources. It will continue to champion and advocate for the involvement and active participation of women and youth as key constituencies for environmental action and advocacy.



*c) Promoting gender specific actions*

Under OP7, the SGP will take gender-specific actions by ensuring that every project undertakes gender impact and gender vulnerability assessments. The programme will provide gender competence training for all grantees and:

- provide equal access to and control over resources and information, such as gender and age-appropriate training and communication material;
- give equal voice and representation in decision-making, such as quotas for women in community resource management groups;
- reduce women’s workload, such as introducing labor-saving technologies and tools; and



- engage at policy level, such as review of the existing sectorial policies to identify entry points for women’s empowerment.

The SGP will continue to empower indigenous peoples’ leadership through its training and ICCA initiative. It will expand institutional capacities training to traditional health practitioners and natural resource management skills. The programme will promote women networking for conservation management and enterprise development. Youth engagement and empowerment will continue to be a priority and focus on entrepreneurship. More recently, the SGP has been engaging with the persons with disability population in its Community-Based adaptation portfolio and will build on this experience to expand their inclusion across the portfolio.

## OP7 CROSS CUTTING ACTIVITIES TO BE FUNDED

The programme will give priority attention to the following activities within the landscape that will contribute to the programme goal and objectives:

- Promote effective ecosystems management through community landscape and waterscape strategies to conserve biodiversity, sustainably develop the ecosystem goods and services whilst enhancing sustainable utilization biodiversity products for livelihood development. This will help achieve the Aichi CBD targets by 2020.
- Support public-private partnership approach for the conservation and utilization of biodiversity products in the CREMAs and community conserved areas (ICCAs).
- Promote sustainable fishing within the Bui Dam and conservation of sacred groves to protect threatened species within the landscape.
- Support climate-resilient agriculture and food systems by integrating the elements of in-situ conservation of genetic resources, climate smart agriculture, agroecological innovative farming and land-based organic providers (i.e. bio-deposit) to reduce use of chemical based fertilizers while also reducing emission from ozone depleting substances such as nitrites and nitrates.
- Support the mainstreaming of eco-certification sustainable wood fuel production and efficient renewable energy technologies within the Black Volta Basin Landscape for improved livelihood.
- Establish systems of local certification of organic producers in vegetable through producer-consumer agreements and eventually graduating to national government policy that will influence markets.
- Reduce and promote alternative to mercury use in artisanal and small-scale gold mining by popularizing community mining concept as a model for small scale gold mining in Ghana.
- Promote/enhance community voices and participation for Black Volta communities in global and national policy, strategy development related to global environment and sustainable development issues.
- Improve the capacities of CSOs/CBOs and promote targeted initiatives that will involve create wealth and empowerment for the Youth and Persons with disabilities.

- Improve the capacities to promote community-driven, socially inclusive, and integrated solutions to address low-emission and resilient urban development
- Demonstrate innovative socially inclusive urban solutions/ approaches (including waste and chemical management, energy, transport, watershed protection, ecosystem services and biodiversity).
- Build institutional industrial and commercial wood fuel stoves and improved carbonization of wood for sustainable supply of charcoal.
- Decentralize solar energy system for small scale agricultural development and drying of agricultural products.

## ELIGIBILITY REQUIREMENTS

---

Applicants must:

- be local non-governmental or non-profit organizations operating in Ghana with valid Registrar General's Department and Social Welfare certificates; or community groups/ community-based organizations, social enterprise organizations and other Civil Society Organizations recognized by the District Assembly and operating in Ghana; and
- have relevant experience and proven records of working with communities and groups in environmental, forestry and or agricultural-related activities.

Submitted project proposals should:

- succinctly describe the problem related to the GEF focal area priority.
- explain how the proposed project objectives and activities would have a concrete impact and contribute towards the achievement of the goals under the SGP focal areas
- demonstrate how the project is aligned with the targets and objectives of the SGP Country Programme Strategy (CPS).
- should be based or already have a working presence in the Black Volta Basin landscape
- show that projects are innovative, impactful and must demonstrate sustainability.

## KEY STEPS IN APPLICATION PROCESS



The project proponent – a national CBO or CSO – contacts the SGP National Coordinator to receive project application guidelines and forms.

With assistance of the National Coordinator the proponent prepares a brief project concept paper and submits it to the National Coordinator.

The National Coordinator reviews and pre-screens the concept paper to check if it meets SGP's objectives agreed in the Country Programme Strategy (CPS).

If the project is found eligible, the project proponent prepares a project proposal. In some cases, this step may be supported by a planning grant.

Completed project proposals are submitted by the National Coordinator to the National Steering Committee (NSC).

The NSC reviews the proposal and either accepts it, rejects it, or returns it to the proposer with recommendations on formulating and refining the project data.

Approved proposals enter the national SGP portfolio. SGP grants are usually paid in three installments: an up-front payment to initiate the project; a mid-term payment upon receipt of a satisfactory progress report; and a final payment on receipt of a satisfactory project completion and final report.

If you are a registered environmental related organization and you want to receive GEF/SGP funds to implement a development project, then submit a concept or an application to the GEF/SGP secretariat via [george.ortsin@undp.org](mailto:george.ortsin@undp.org) or [lois.sarpong@undp.org](mailto:lois.sarpong@undp.org).

The application form must be accompanied by a detailed budget for the project, a map showing the project site, a feasibility study for the project, and if available, a brochure and a copy of the regulations of your organization. All application must follow a call for proposal.

When submitting your application form, please bear the following in mind

- i. In selecting projects for funding, GEF/SGP places a high priority on the impact and sustainability of the project. First and foremost, you must convince the GEF/SGP secretariat that your organization is capable of the sound management of sustainable development projects. A detailed description of the past achievements of your organization would therefore be appreciated.
- ii. You must demonstrate that you have sufficient funds to cover running costs.
- iii. In some cases a pro forma estimates would be supplied for each budget item so that we can ensure value for money.

The GEF/SGP grants are made directly to community-based organizations (CBOs) and civil society organizations (CSOs) in recognition of the key role they play as a resource and constituency for environment and development concerns. The maximum grant amount per project is US\$50,000.

## FOR FURTHER ENQUIRES

**NATIONAL COORDINATOR  
GEF SMALL GRANTS PROGRAMME  
UNITED NATIONS DEVELOPMENT PROGRAMME  
UN HOUSE NO. 27 RING ROAD EAST  
ACCRA  
TEL: +2335 05740909**

**Email: [george.ortsin@undp.org](mailto:george.ortsin@undp.org)  
Website: [www.sgp.undp.org](http://www.sgp.undp.org)**

