

UNDP

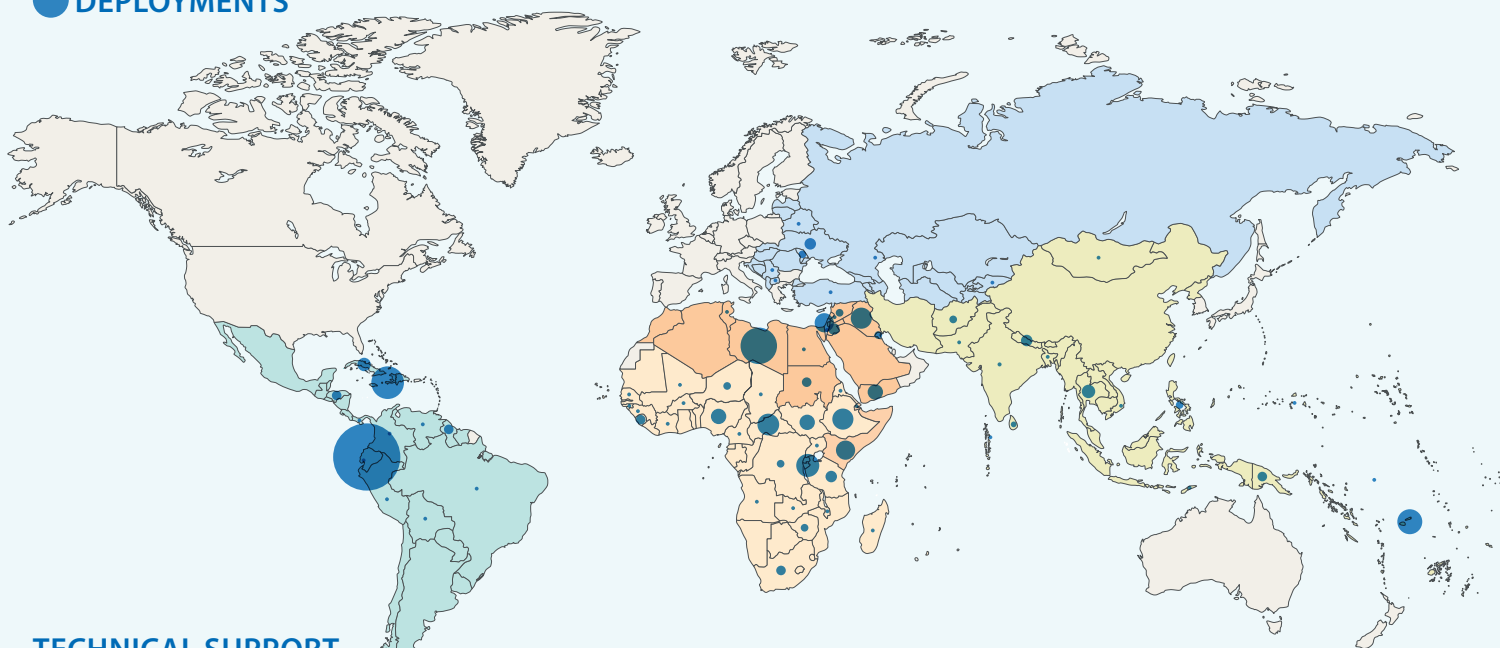
2016 DEPLOYMENTS

for crisis preparedness, response and recovery



Empowered lives.
Resilient nations.

DEPLOYMENTS



TECHNICAL SUPPORT

AFRICA

TOP 3 PROFILES DEPLOYED

CRISIS GOVERNANCE	16
DISASTER RISK REDUCTION	15
RULE OF LAW	13
TOTAL DEPLOYMENTS	109

LAC

TOP 3 PROFILES DEPLOYED

OPERATIONS FUNCTIONS	12
RECOVERY	12
DISASTER RISK REDUCTION	11
TOTAL DEPLOYMENTS	78

ARAB STATES

TOP 3 PROFILES DEPLOYED

OPERATIONS AND PROGRAMME SUPPORT	15
CRISIS GOVERNANCE	10
RULE OF LAW	9
TOTAL DEPLOYMENTS	70

ASIA PACIFIC

TOP 3 PROFILES DEPLOYED

DISASTER RISK REDUCTION	12
M&E	8
CONFLICT PREVENTION AND PEACEBUILDING	5
TOTAL DEPLOYMENTS	55

ECIS

TOP 3 PROFILES DEPLOYED

CRISIS GOVERNANCE	5
DISASTER RISK REDUCTION	5
RULE OF LAW	4
TOTAL DEPLOYMENTS	20

HQ

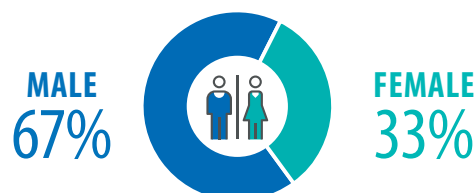
TOP 3 PROFILES DEPLOYED

CRISIS GOVERNANCE	2
CONFLICT PREVENTION	1
M&E	1
TOTAL DEPLOYMENTS	4

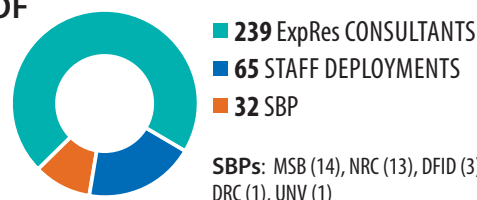
336 EXPERTS DEPLOYED TO 78 COUNTRIES WORLDWIDE IN 2016 TO SUPPORT CRISIS PREPAREDNESS, RESPONSE AND RECOVERY

- 110 deployments to 30 countries worldwide paid from CRU resources (\$5,480,519)
- Average duration – 3 months
- Main thematic support
 - Disaster risk reduction and recovery (14%)
 - Crisis governance (12%)
 - Rule of law (9%)
 - Operations and programme support (8%)
 - Conflict prevention and peacebuilding (7%)
 - Livelihoods and area based development (7%)
 - Early recovery coordination (6%)

DISTRIBUTION BY GENDER



DISTRIBUTION OF DEPLOYMENTS BY MODALITY

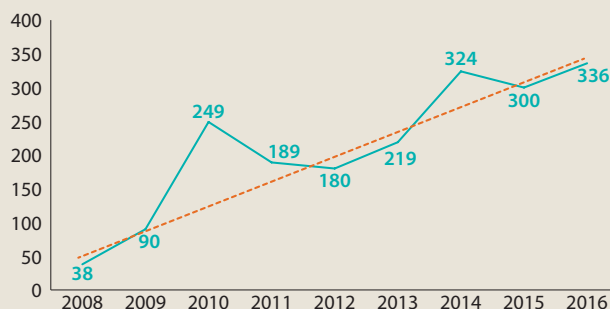


UNDP'S ROSTERS FOR CRISIS RESPONSE

The available deployment mechanisms are:

EXPRES ROSTER (vetted consultants),
SURGE (deployment of staff) and
STAND BY PARTNERS ORGANIZATIONS.

The total deployable capacity is **2,752**
(1,824 male/928 female).



Trend in Overall Deployments 2008-2016. A total of 1925 deployments since the inception of the roster.

MECHANISM

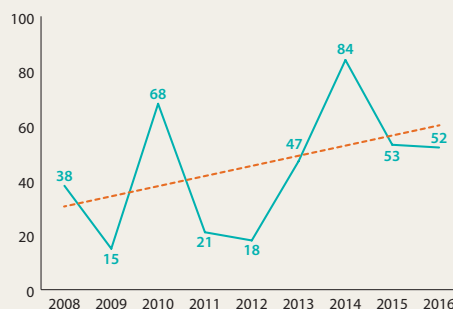
TRENDS DEPLOYMENTS

366 SURGE Advisors

SURGE Advisors are UNDP staff with extensive technical and crisis experience with skills in immediate crisis response including technical/managerial, analytical and communications skills. Deployments are generally from one week to three months.

GENDER DISTRIBUTION

FEMALE	137
MALE	229



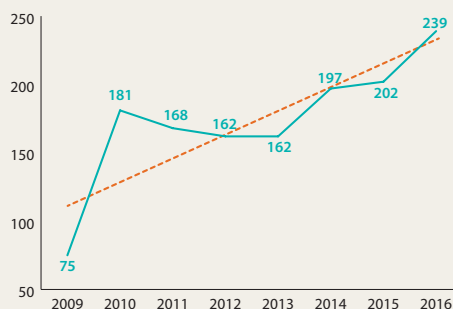
Over 36% increase in SURGE deployments in 2016 compared to 2008.

2,234 ExpRes roster capacity

The Experts Roster for Rapid Response (ExpRes) is a consultant deployment mechanism which maintains pre-vetted consultants for quick support to UNDP Country Offices. The primary purpose of this roster has been to deploy Crisis Prevention and Recovery (CPR) technical experts in the aftermath of a crisis, for recovery, prevention and for CPR Programming.

GENDER DISTRIBUTION

FEMALE	751
MALE	1,486



In 2016, a record 239 ExpRes deployments since the inception of the roster. A 18% increase compared to 2015 and more than tripled compared to 2009.

Stand-by Partner organizations

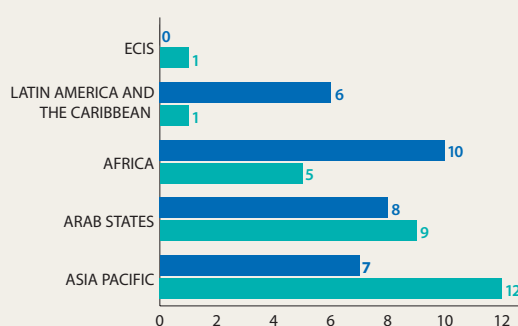
Through its agreements with standby partners, UNDP can deploy additional experts to UNDP offices during crisis and recovery phase. UNDP has currently Memorandum of Understanding with the following Stand by Partner organizations: Swedish Civil Contingencies Agency (MSB), Norwegian Refugee Council (NRC), Danish Refugee Council (DRC), CANADEM, and DFID.

2015 SBP

MSB	16
DFID	6
NRC	5
CANADEM	1

2016 SBP

MSB	14
NRC	13
DFID	3
DRC	1



SBP deployments

2015
2016

UNDP CORPORATE CRISIS RESPONSE SYSTEMS

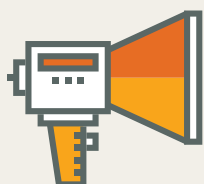


Empowered lives.
Resilient nations.



CRISIS RESPONSE STANDARD OPERATING PROCEDURES

- Clear and efficient processes to provide rapid support to UNDP Country Offices dealing with crises
- Based on three levels of crisis support to the Country Office: Level 1, Level 2, Level 3
- Activation of corporate crisis response systems and tools: deployments of experts, emergency funding allocation, scale up of Country Office capacity, support to interagency processes, etc.



EARLY WARNING

- Situation monitoring: open-source information and analysis on crisis-related situations
- Supporting crisis risks tracking: Crisis Risk Dashboard consolidating and visualizing information to support risk and trends analysis for evidence-based decision-making
- Crisis risks scanning: Launch of the Executive Team for Early Warning, a senior decision-making process for regular crisis risk scanning and corporate crisis preparedness



CRISIS RESPONSE PORTAL

- One-stop-shop for country offices facing a crisis
- Instant access to corporate crisis response procedures, tools and other corporate resources to support the country office



FAST DEPLOYMENT OF EXPERTS & CAPACITY DEVELOPMENT

- In 2016, UNDP deployed 336 experts to 78 countries/offices to support crisis response and recovery
- 261 staff members in 108 country offices and five regional hubs and global headquarters were trained on UNDP's crisis response processes and tools



CRISIS RESPONSE PACKAGES

Four response packages to help UNDP country offices to:

- respond to sudden-onset crises and complex, protracted crises facing new emergencies
- swiftly support governments and communities needs on livelihoods, governance and disaster recovery
- dispatch UNDP crisis response pre-positioned items

UNDP CRISIS RESPONSE TRAINING AND CAPACITY DEVELOPMENT

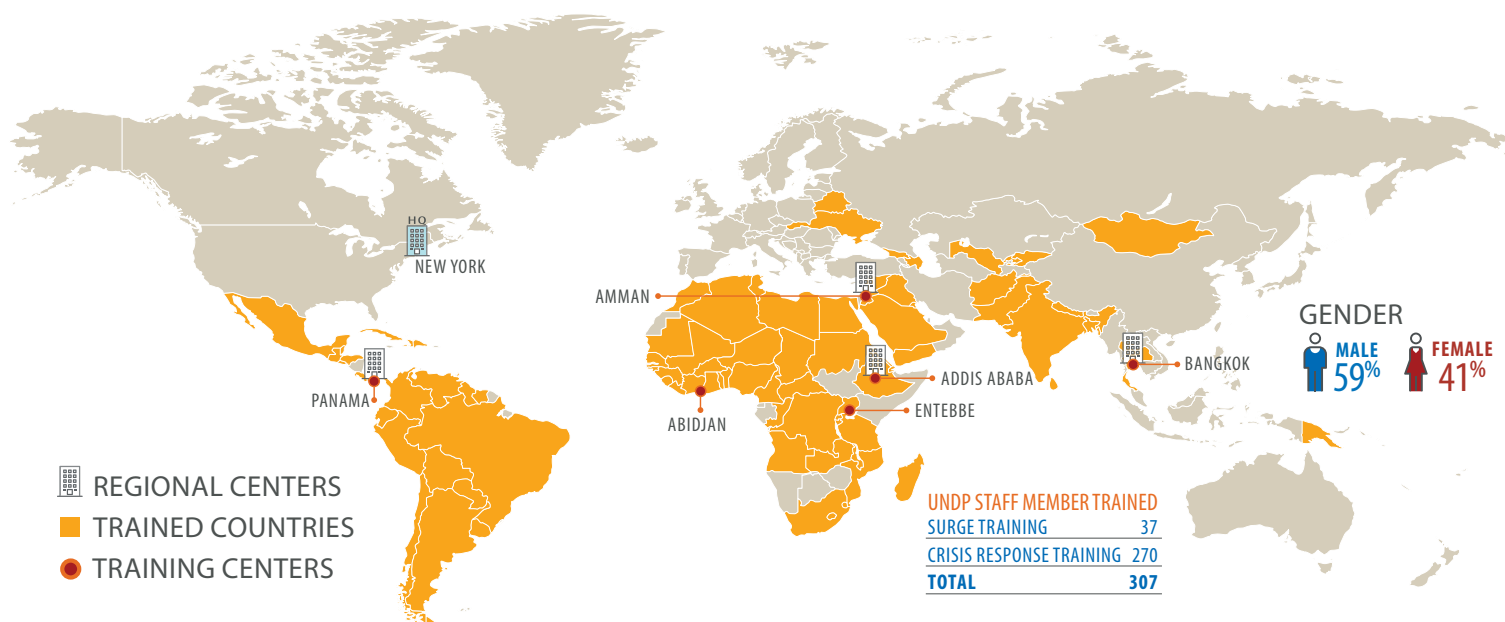


Empowered lives.
Resilient nations.

UNDP COUNTRY OFFICES (COs) have to be ready to respond to sudden onset, protracted or low intensity crises. At the same time, several COs are presented for the first time with the challenge of scaling up for a crisis response, often vernment. UNDP personnel in COs is called to make difficult, far-reaching, and time critical decisions under pressure. It's imperative for the organization to build adequate capacity for UNDP personnel to have a strong command on corporate crisis response tools and systems and operate effectively in interagency processes when a crisis hits.

In 2016 UNDP developed training modules and organized training for all regions to strengthen its personnel capacity to be prepared and respond to crises.

In 2016, **307 STAFF MEMBERS** in **93 COUNTRY OFFICES** and in **REGIONAL HUBS AND GLOBAL HEADQUARTERS** were trained on UNDP's crisis response processes or on the required skills to be deployed as a SURGE advisor.



The training included crisis simulations, presentations, group and plenary exercises targeting programme and operations staff with key managerial or advisory function within country offices or central or regional bureaus.

TRAINING PARTICIPANTS TOOK AWAY A SOLID AND ACTIONABLE UNDERSTANDING OF THE FOLLOWING:

1. UNDP'S CORPORATE CRISIS RESPONSE POLICIES, TOOLS, SYSTEMS, RESOURCES AND SUPPORT MECHANISMS.



2. UNDP'S ROLE IN HUMANITARIAN CONTEXTS INCLUDING THE SUPPORT ON EARLY RECOVERY COORDINATION. NEW INSIGHTS FROM THE OUTCOME OF THE WORLD HUMANITARIAN SUMMIT.



3. UNDP'S ROLE IN PROGRAMME CRITICALITY EXERCISES, POST DISASTER NEEDS ASSESSMENTS (PDNA) AND RECOVERY AND PEACE BUILDING ASSESSMENTS (RPBA)



4. UNDP'S CRISIS RESPONSE PACKAGES AND THEIR KEY ELEMENTS.



EARLY WARNING AND EARLY ACTION IN 2016

The outbreak of a crisis may come with tremendous human cost and undermine development gains with the impact lasting for many years. Crises usually do not erupt without any previous signs. They are the result of an enabling environment and the product of several underlying factors. Tracking and analyzing the root causes over time, and using this knowledge as an evidence base, can support decision-making to improve preparedness, mitigate crisis risks, and take early action. UNDP's Crisis Response Unit provides early warning support to UNDP and to the broader UN system—through UNCTs and inter-agency processes—to increase the organizations responsiveness to crisis:



1. SITUATION MONITORING

Every week, CRU shares open-source information and analysis on crisis-related situations with 500+ staff to keep them informed and aware of persisting or emerging crisis risks globally.



2. CRISIS RISK TRACKING TOOLS

CRU finalized the prototype of Crisis Risk Dashboard: an Intranet-based platform consolidating and visualizing information to support risk and trends analysis and, ultimately, evidence-based decision-making by UNDP and UNCTs.



3. CRISIS RISK SCANNING

CRU launched the Executive Team for Early Warning: a senior decision-making process for regular crisis risk scanning and corporate crisis preparedness that allows UNDP to proactively act to mitigate and to prepare for potential crises. The first edition focused on Armenia-Azerbaijan and resulted in additional preparedness measures.



4. SUPPORT TO COUNTRY OFFICES

- **CAMEROON:** design of a country-specific Crisis Risk Dashboard to track trends and incidents, in particular to facilitate analysis of risks to development in fragile areas of the Far North and East of the country.
- **TANZANIA:** design of a country-specific Crisis Risk Dashboard to support continuous context analysis, particularly of potential and emerging risks to development to allow UNDP to proactively address these risks.
- **VENEZUELA:** deployment of an early warning expert to conduct regular socio-economic analysis and scenario building to inform and advise the Resident Coordinator in a highly complex context.

UNDP GLOBAL CLUSTER FOR EARLY RECOVERY (GCER)



Empowered lives.
Resilient nations.

Integrating the early recovery approach across all humanitarian actors helps people move from humanitarian relief towards self-sustaining development. It makes sure that the humanitarian response emphasizes the importance of building community capacity and skills to strengthen individual's and communities' resilience to future crisis. It reduces dependence on relief, and where possible take steps towards solving some of the issues that contributed to the crisis in the first place.

UNDP is the lead UN agency on early recovery within the framework of the Inter-Agency Standing Committee (IASC), the body responsible for inter-agency cooperation in the humanitarian system.

UNDP in Geneva hosts the Global Cluster for Early Recovery (GCER) whose roles include promoting and clarifying early recovery, and ensuring it is being adopted in humanitarian response in countries affected by crisis.



GCER LEADERSHIP

In 2016, UNDP's Crisis Response Unit (CRU) continued to strengthen its leadership of the GCER.

WEBSITE



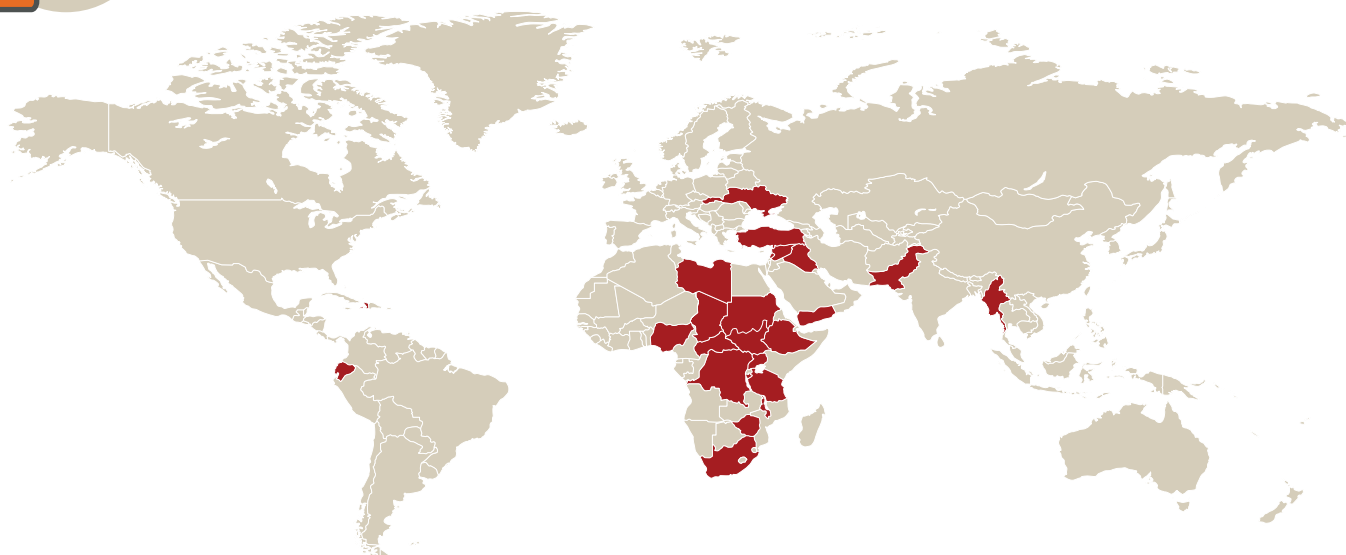
Launched in 2016, the **EARLY RECOVERY ONLINE RESOURCE CENTER** (<http://earlyrecovery.global>) contains policy, guidance and tools pages, **23 UP-TO-DATE COUNTRY PAGES; CAPACITY BUILDING** and training pages; and a library of around **700 DOCUMENTS** available in 7 languages. The Center has quickly become a reference for practitioners and academics in this field.



COUNTRY SUPPORT

■ Countries benefitting from CRU/GCER coordination support

Bangladesh, Burundi, CAR, Chad, DRC, Ecuador, Ethiopia, Gaziantep (Turkey), Haiti, Iraq, Ivory Coast, Lebanon, Libya, Malawi, Myanmar, Nigeria, oPt, Pakistan, South Africa, South Sudan, Sudan, Syria, Tanzania, Uganda, Ukraine, Yemen, Zimbabwe.



EXAMPLES:

- Two in-country workshops facilitated the mainstreaming of Early Recovery in the humanitarian response in Lebanon and Syria.
- A mission reviewed UNDP Nigeria's crisis response portfolio and capacities to tackle the humanitarian crisis and identified ways to strengthen cluster coordination at national and sub-national levels.
- A mission to Afghanistan supported the Government to set up a coordination structure to deal with the large number of returnees (particularly from Pakistan) and the existing caseload of old and new Internally Displaced People.
- A mission to Ukraine conducted a Cluster architecture revision and another mission to DRC contributed to discuss the preparation of the multi-year humanitarian response.

CAPACITY BUILDING



UNDP in Geneva invested in the expertise and capacity of a larger community of practitioners ready to be deployed to the field to ensure the integration of the Early Recovery approach in the humanitarian preparedness and response, as well as to enhance the implementation of a rapid Early Recovery support to affected countries.

IN 2016 THE CLUSTER TRAINED 19 prospective Early Recovery Advisors and 18 Cluster Coordinators for Early Recovery. The vetted trainees are added to the UNDP managed roster, significantly improving UNDP's capacity to deploy experts to crisis countries.

Aiming at providing continuous learning and training opportunities outside the formal training sessions, UNDP develops an **E-LEARNING COURSES** for Cluster Coordinators allowing a thorough understanding of the theory and practice or Early Recovery Cluster Coordination.

EARLY RECOVERY INTEGRATION IN THE HUMANITARIAN RESPONSE

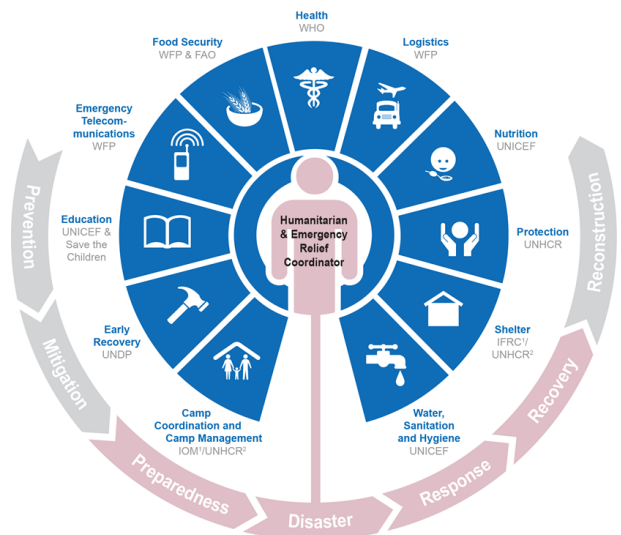
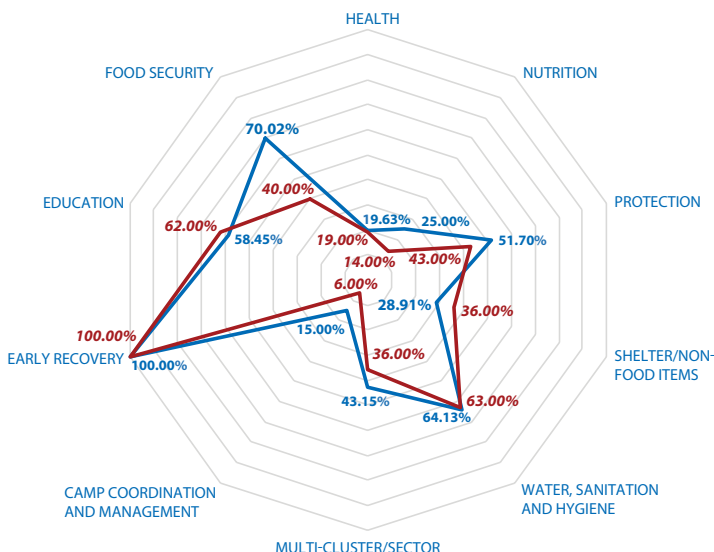
To assess the integration of the Early Recovery approach at the global level, GCER conducted an analysis of Early Recovery in the 2015 and 2016 humanitarian response plans.

The results showed that **49% OF THE PROJECTS PRESENTED IN 2016 ARE EARLY RECOVERY RELATED**; which represented **39% OF OVERALL FUNDING REQUESTED**.

This data shows the success of Early Recovery integration in all clusters throughout the humanitarian response paving the way for strengthening the humanitarian/development nexus in the elaboration and implementation of humanitarian interventions in crisis countries.

— Proportion of Early Recovery related projects per cluster¹

— Proportion of the Early Recovery related funding requested per cluster¹



¹ Data from Logistics Cluster, Emergency Telecommunications Cluster, and from Common Services and unclassified clusters are not presented in the radar graph. However, the data concerning these clusters and groups are included in the global figures.



United Nations Development Programme
One United Nations Plaza
New York, NY, 10017 USA

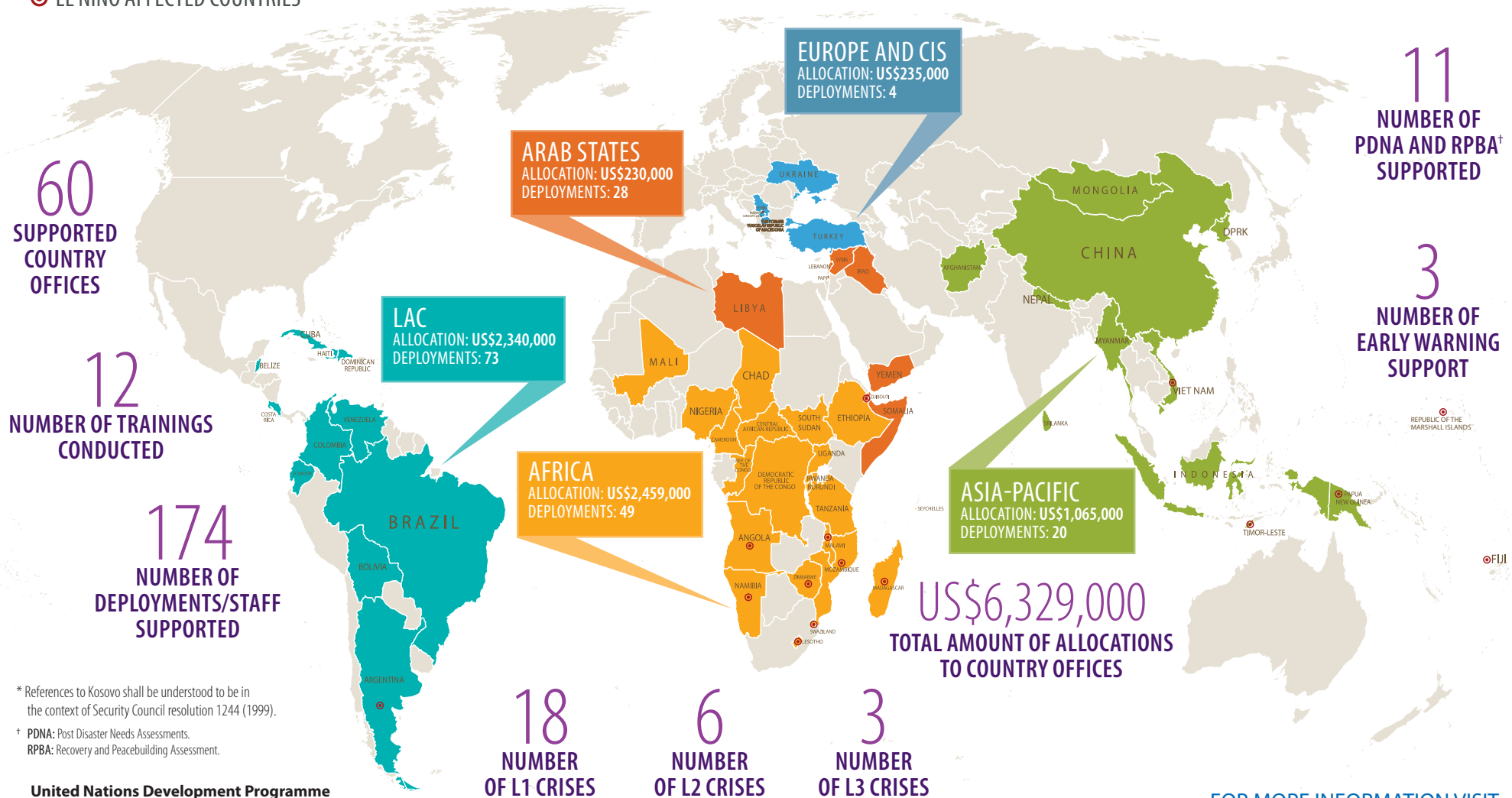
FOR MORE INFORMATION VISIT
WWW.UNDP.ORG
WWW.EARLYRECOVERY.GLOBAL

UNDP CRISIS RESPONSE AND PREPAREDNESS



Empowered lives.
Resilient nations.

📍 EL NIÑO AFFECTED COUNTRIES



* References to Kosovo shall be understood to be in the context of Security Council resolution 1244 (1999).

† PDNA: Post Disaster Needs Assessments.
RPBA: Recovery and Peacebuilding Assessment.

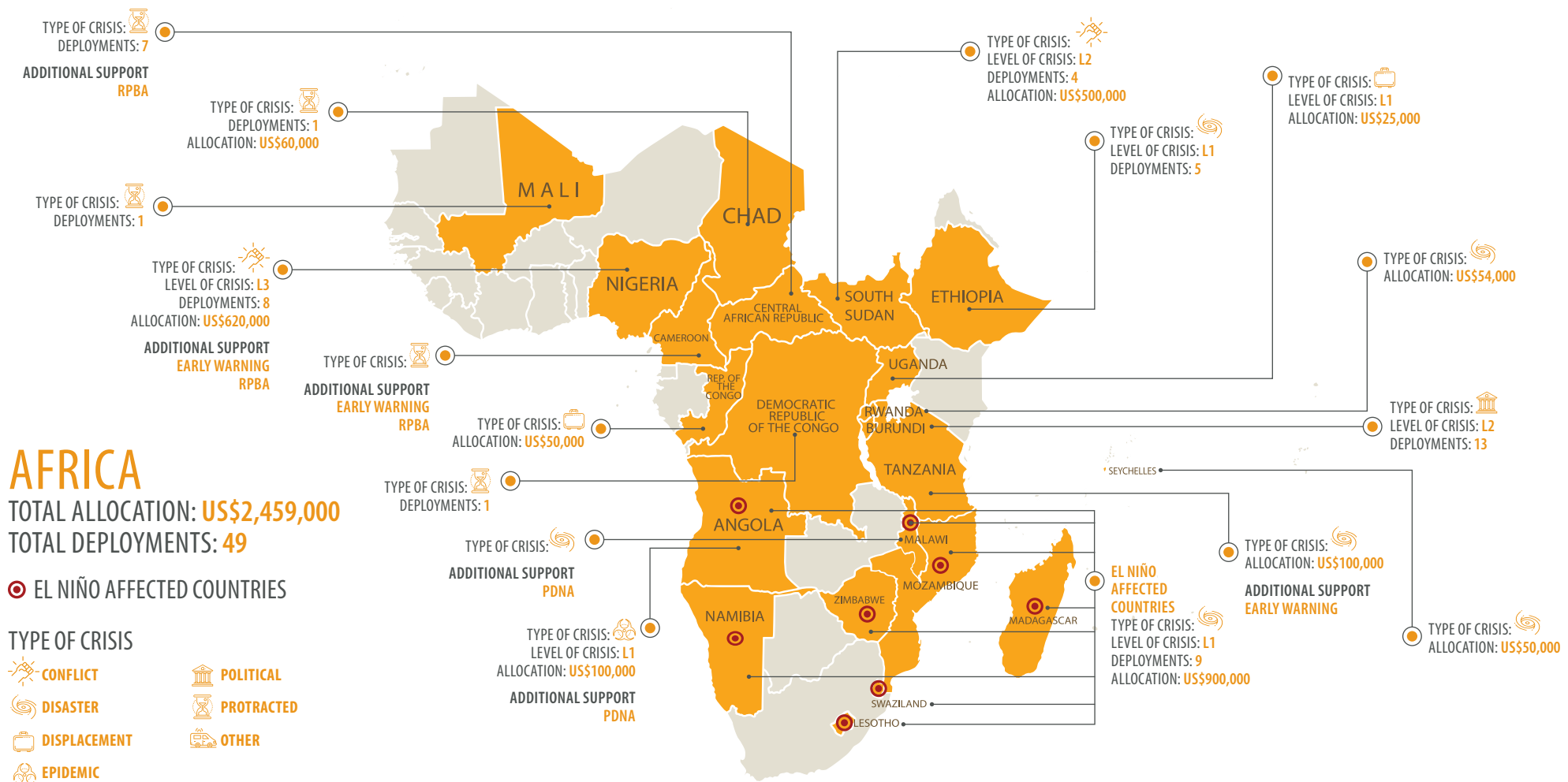
United Nations Development Programme
One United Nations Plaza
New York, NY, 10017 USA

FOR MORE INFORMATION VISIT
www.undp.org

UNDP CRISIS RESPONSE AND PREPAREDNESS IN AFRICA REGION



Empowered lives.
Resilient nations.



United Nations Development Programme
One United Nations Plaza
New York, NY, 10017 USA

FOR MORE INFORMATION VISIT
www.undp.org

UNDP CRISIS RESPONSE AND PREPAREDNESS IN LAC REGION



Empowered lives.
Resilient nations.

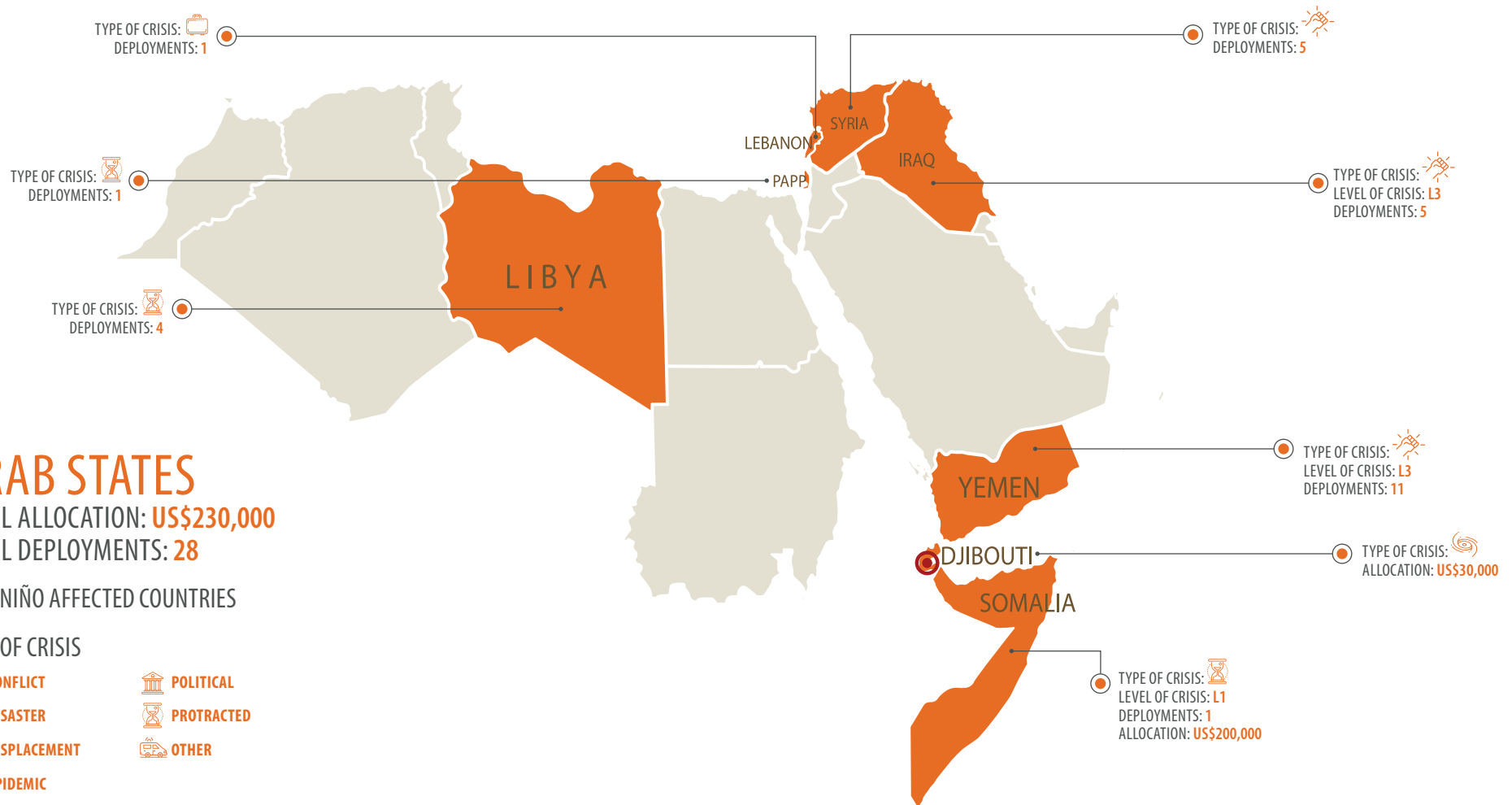


UNDP

CRISIS RESPONSE AND PREPAREDNESS IN THE ARAB STATES REGION



Empowered lives.
Resilient nations.



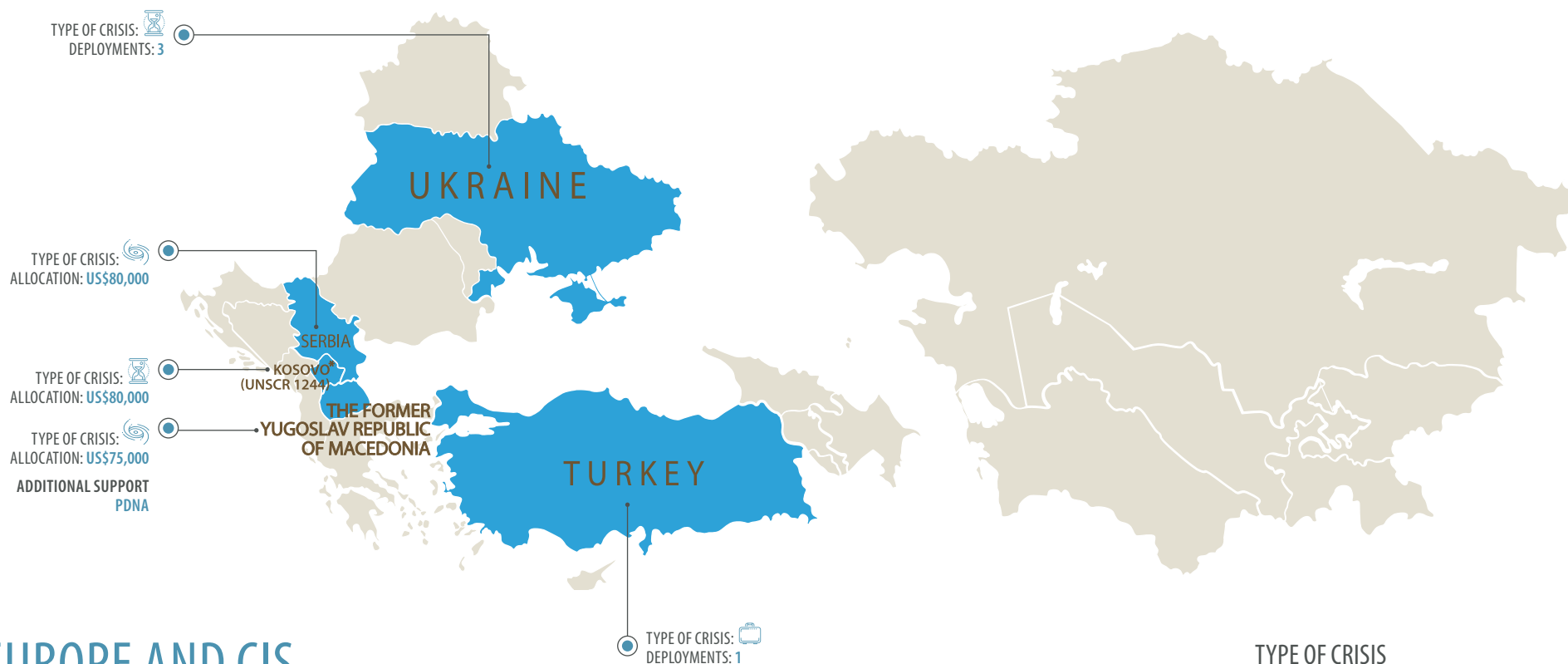
United Nations Development Programme
One United Nations Plaza
New York, NY, 10017 USA

FOR MORE INFORMATION VISIT
www.undp.org

UNDP CRISIS RESPONSE AND PREPAREDNESS IN EUROPE AND CIS



Empowered lives.
Resilient nations.



EUROPE AND CIS
TOTAL ALLOCATION: US\$235,000
TOTAL DEPLOYMENTS: 4

* References to Kosovo shall be understood to be in the context of Security Council resolution 1244 (1999).

United Nations Development Programme
One United Nations Plaza
New York, NY, 10017 USA

TYPE OF CRISIS

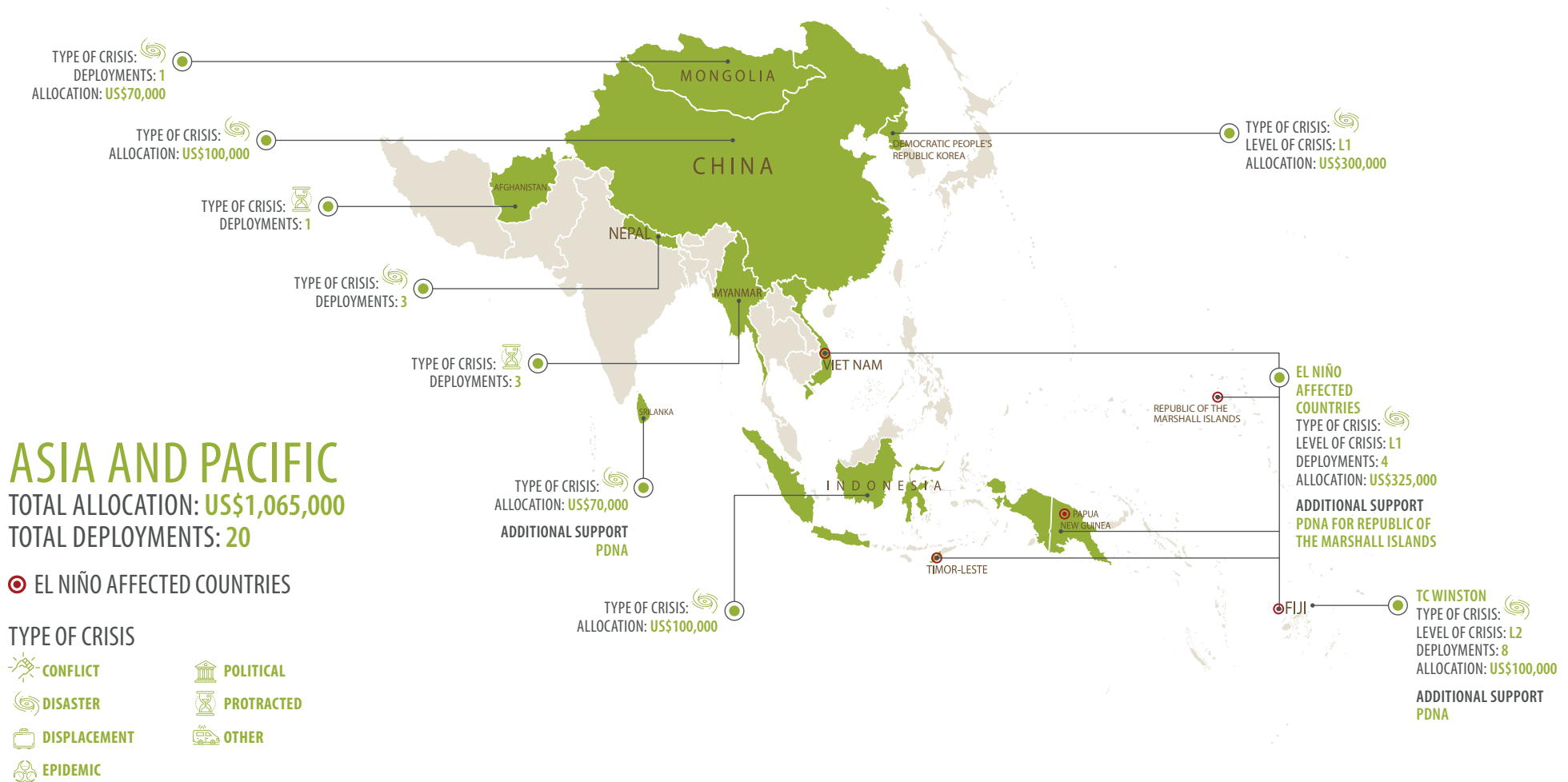


FOR MORE INFORMATION VISIT
www.undp.org

UNDP CRISIS RESPONSE AND PREPAREDNESS IN ASIA AND PACIFIC



Empowered lives.
Resilient nations.



United Nations Development Programme
One United Nations Plaza
New York, NY, 10017 USA

FOR MORE INFORMATION VISIT
www.undp.org