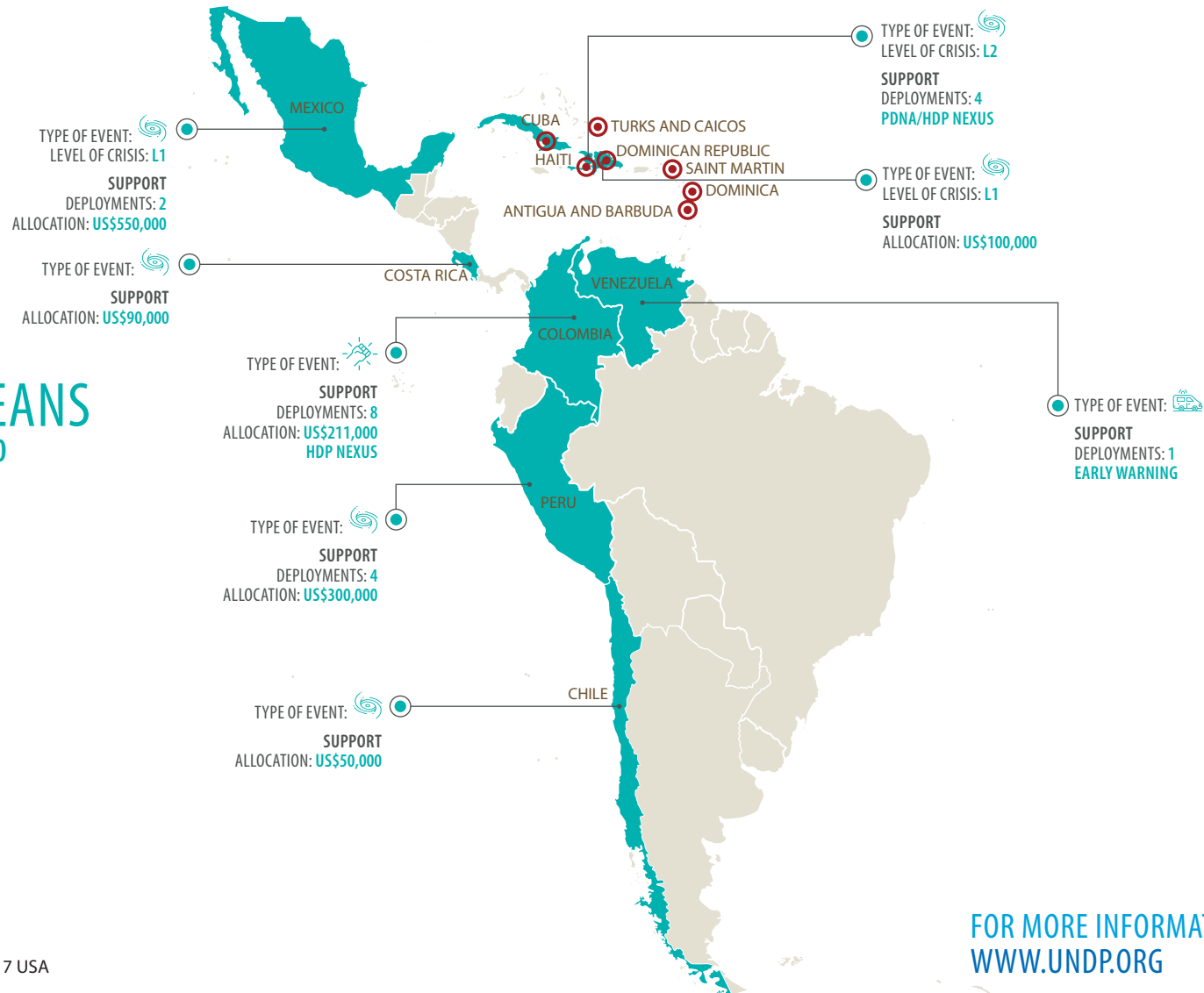


# CRISIS RESPONSE AND PREPAREDNESS IN LATIN AMERICA AND THE CARIBBEANS REGION (2017)



## LATIN AMERICA AND THE CARIBBEANS

TOTAL ALLOCATION: **US\$3,651,000**

TOTAL DEPLOYMENTS: **54**

### TYPE OF EVENT

- CONFLICT
- DISASTER
- DISPLACEMENT
- EPIDEMIC
- POLITICAL
- PROTRACTED
- OTHER

### IRMA AND MARIA AFFECTED COUNTRIES

TYPE OF EVENT:   
LEVEL OF CRISIS: **L1 and L2**

SUPPORT  
DEPLOYMENTS: **35**  
ALLOCATION: **US\$2,350,000**  
PDNA