

Appendix 1: Supporting Material

Here we present a series tables underlying the figures included in the discussion paper *Kenya's Youth Employment Challenge*. Tables are presented in the same order as figures appear in the text and organized by sets corresponding to the report's sections. For example, Table 2.1, 2.2 etc. correspond to chapter 2 of the report, while Table 4.1 corresponds to chapter 4. However, within sections table numbers do not necessarily correspond to figure numbers, as several figures might be based on the same table. Tables are built by author's own processing of the micro records of the Kenya Integrated Household Survey contained in the official CD-ROM. Tables presenting demographic trends are mainly based on UN population estimates. Many figures display data in smoothed form using a spline local regressor or using the "smooth" type of plot of the lattice library for the R software. Most data in tables correspond to the direct frequencies, sums or means obtained from the micro records.

Table 2.1: Economic growth — annual percent change in GDP, 1972–2010

Year	GDP	Smooth	Year	GDP	Smooth
1973	6.5		1992	2.3	3.4
1973	6.8	5.0	1993	0.4	3.2
1974	4.1	4.9	1994	3.0	3.0
1975	3.1	5.0	1995	4.8	2.8
1976	3.1	5.0	1996	4.6	2.6
1977	4.2	5.1	1997	2.4	2.4
1978	8.2	5.2	1998	1.8	2.2
1979	7.9	5.2	1999	1.4	2.1
1980	5.0	5.1	2000	0.2	2.2
1981	3.9	4.9	2001	1.2	2.4
1982	6.0	4.7	2002	0.5	2.7
1983	4.8	4.5	2003	2.9	3.1
1984	2.3	4.4	2004	5.1	3.5
1985	0.8	4.3	2005	5.9	3.9
1986	4.8	4.2	2006	6.3	4.2
1987	5.5	4.2	2007	7.0	4.4
1988	4.9	4.1	2008	1.5	4.5
1989	5.1	4.0	2009	2.6	4.6
1990	5.0	3.9	2010	5.6	4.7
1991	4.3	3.7			

Source: own construction from data in *Economic Survey*, Kenya National Bureau of Statistics (KNBS).

Note: all smooth columns in tables in this first set correspond to spline predicted values using 7 degrees of freedom.

Table 2.2: Population Growth

Year	Annual change					
	Working Age Population		Dependent Population		Total Population	
	Number	Percent	Number	Percent	Number	Percent
1955	1.8	1.7	4.1	4.3	2.9	3.0
1960	1.7	2.2	4.5	4.2	3.1	3.2
1965	2.6	2.7	4.0	4.1	3.3	3.4
1970	3.4	3.1	3.6	3.9	3.5	3.5
1975	3.7	3.5	3.8	3.7	3.7	3.6
1980	3.9	3.8	3.8	3.5	3.8	3.6
1985	4.0	3.9	3.7	3.2	3.8	3.6
1990	4.1	3.9	3.1	2.9	3.6	3.4
1995	4.2	3.8	2.2	2.6	3.2	3.2
2000	3.4	3.6	1.8	2.4	2.6	3.0
2005	3.2	3.3	2.0	2.3	2.6	2.8
2010	2.7	3.1	2.5	2.2	2.6	2.7
2015	2.7	3.0	2.7	2.1	2.7	2.6
2020	2.8	2.8	2.3	2.0	2.6	2.5
2025	2.8	2.7	1.8	1.9	2.4	2.4
2030	2.9	2.6	1.4	1.7	2.2	2.3
2035	2.7	2.5	1.4	1.6	2.1	2.1
2040	2.4	2.4	1.5	1.5	2.0	2.0
2045	2.1	2.2	1.6	1.4	1.9	1.9
2050	1.9	2.0	1.5	1.4	1.8	1.8
2055	1.8	1.8	1.3	1.3	1.6	1.6
2060	1.7	1.6	1.1	1.2	1.5	1.5
2065	1.5	1.5	1.0	1.1	1.3	1.3
2070	1.3	1.3	1.0	1.0	1.2	1.2
2075	1.1	1.1	1.0	1.0	1.1	1.1
2080	0.9	1.0	1.0	0.9	0.9	0.9
2085	0.8	0.8	0.9	0.8	0.8	0.8
2090	0.7	0.7	0.8	0.8	0.7	0.7
2095	0.5	0.5	0.7	0.7	0.6	0.6
2100	0.4	0.4	0.7	0.7	0.5	0.5

Source: own calculations based on UN Population estimates.

Note: see note to Table 2.1.

Table 2.3: Age structure of the population (thousands) and dependency ratio

Year	Population by age group				Dependency Ratio
	0-14 years	65+ years	15-64 years	All ages	
1950	2,417	239	3,420	6,076	0.78
1955	2,990	265	3,726	6,981	0.87
1960	3,764	298	4,043	8,105	1.00
1965	4,601	342	4,564	9,507	1.08
1970	5,519	388	5,344	11,251	1.11
1975	6,694	440	6,352	13,486	1.12
1980	8,129	492	7,646	16,267	1.13
1985	9,819	558	9,278	19,655	1.12
1990	11,488	632	11,324	23,444	1.07
1995	12,757	746	13,923	27,426	0.97
2000	13,841	877	16,538	31,256	0.89
2005	15,220	981	19,414	35,615	0.83
2010	17,200	1,074	22,238	40,512	0.82
2015	19,562	1,283	25,488	46,333	0.82
2020	21,655	1,595	29,311	52,561	0.79
2025	23,387	1,932	33,736	59,055	0.75
2030	24,856	2,276	38,795	65,927	0.70
2035	26,429	2,677	44,152	73,258	0.66
2040	28,203	3,289	49,483	80,975	0.64
2045	29,892	4,238	54,776	88,906	0.62
2050	31,267	5,485	60,134	96,886	0.61
2055	32,267	6,860	65,656	104,783	0.60
2060	33,032	8,058	71,449	112,539	0.58
2065	33,650	9,292	77,142	120,084	0.56
2070	34,136	10,834	82,348	127,318	0.55
2075	34,385	12,681	87,093	134,159	0.54
2080	34,364	14,855	91,305	140,524	0.54
2085	34,121	17,121	95,100	146,342	0.54
2090	33,747	19,322	98,482	151,551	0.54
2095	33,289	21,551	101,271	156,111	0.54
2100	32,764	23,888	103,358	160,010	0.55

Source: own calculations based on UN Population estimates.

Appendix 1: Supporting Material

Table 2.4: Annual change in the youth and adult working age population, 1955–2100

Year	Population (thousands)				Annual % Change in Working Age Population					
	Total	Working Age			All		Youth		Adult	
		All	Youth	Adult	Actual	Smooth	Actual	Smooth	Actual	Smooth
1950	6,076	3,420	1,966	1,454	-	-	-	-	-	-
1955	6,981	3,726	2,162	1,564	1.8	1.7	2.3	2.1	1.2	1.2
1960	8,105	4,043	2,347	1,696	1.7	2.2	1.9	2.6	1.5	1.6
1965	9,507	4,564	2,689	1,875	2.6	2.7	2.9	3.2	2.1	1.9
1970	11,251	5,344	3,239	2,105	3.4	3.1	3.9	3.7	2.5	2.3
1975	13,486	6,352	4,019	2,333	3.7	3.5	4.4	4.0	2.4	2.6
1980	16,267	7,646	5,067	2,579	3.9	3.8	4.8	4.2	2.3	2.9
1985	19,655	9,278	6,260	3,018	4.0	3.9	4.3	4.3	3.4	3.3
1990	23,444	11,324	7,650	3,674	4.1	3.9	4.0	4.1	4.1	3.5
1995	27,426	13,923	9,392	4,531	4.2	3.8	4.1	3.9	4.4	3.7
2000	31,256	16,538	11,171	5,367	3.4	3.6	3.4	3.5	3.6	3.7
2005	35,615	19,414	13,177	6,237	3.2	3.3	3.3	3.2	3.0	3.7
2010	40,512	22,238	14,837	7,401	2.7	3.1	2.5	2.8	3.2	3.7
2015	46,333	25,488	16,464	9,024	2.7	3.0	2.1	2.6	3.8	3.7
2020	52,561	29,311	18,285	11,026	2.8	2.8	2.1	2.4	4.0	3.6
2025	59,055	33,736	20,401	13,335	2.8	2.7	2.2	2.3	3.8	3.5
2030	65,927	38,795	23,196	15,599	2.9	2.6	2.6	2.2	3.2	3.4
2035	73,258	44,152	26,101	18,051	2.7	2.5	2.4	2.1	3.1	3.2
2040	80,975	49,483	28,628	20,855	2.4	2.4	1.9	1.9	3.1	3.0
2045	88,906	54,776	30,945	23,831	2.1	2.2	1.6	1.7	2.8	2.8
2050	96,886	60,134	33,110	27,024	1.9	2.0	1.4	1.5	2.6	2.6
2055	104,783	65,656	35,347	30,309	1.8	1.8	1.3	1.3	2.3	2.4
2060	112,539	71,449	37,626	33,823	1.7	1.6	1.2	1.1	2.2	2.2
2065	120,084	77,142	39,685	37,457	1.5	1.5	1.0	1.0	2.0	2.0
2070	127,318	82,348	41,327	41,021	1.3	1.3	0.8	0.8	1.8	1.8
2075	134,159	87,093	42,590	44,503	1.1	1.1	0.6	0.6	1.6	1.6
2080	140,524	91,305	43,577	47,728	0.9	1.0	0.4	0.5	1.4	1.4
2085	146,342	95,100	44,327	50,773	0.8	0.8	0.3	0.3	1.2	1.2
2090	151,551	98,482	44,837	53,645	0.7	0.7	0.2	0.2	1.1	1.1
2095	156,111	101,271	45,035	56,236	0.5	0.5	0.1	0.1	0.9	0.9
2100	160,010	103,358	44,927	58,431	0.4	0.4	-0.1	-0.1	0.7	0.7

Source: own calculations based on UN Population estimates.

Note: the smooth is spline with 7 degrees of freedom.

Appendix 1: Supporting Material

Table 2.5: Trends in the working-age population structure, 1950–2050 (percent)

Year	Age cohort											
	15-19		20-24		25-29		30-34		35-64		15-64	
	Actual	Smooth	Actual	Smooth	Actual	Smooth	Actual	Smooth	Actual	Smooth	Actual	Smooth
1950	18.4	17.3	15.3	15.2	12.5	13.0	10.7	11.1	43.1	43.5	100	100
1955	17.4	18.1	16.3	15.5	13.5	13.1	10.9	11.2	41.8	42.1	100	100
1960	16.7	19.0	15.6	15.8	14.5	13.3	11.9	11.2	41.3	40.7	100	100
1965	19.9	20.0	14.3	16.2	13.2	13.3	12.3	11.2	40.3	39.3	100	100
1970	22.3	21.0	16.4	16.7	11.8	13.5	10.9	11.1	38.7	37.7	100	100
1975	22.5	21.8	18.2	17.3	13.4	13.7	9.5	11.1	36.4	36.2	100	100
1980	22.5	22.3	18.3	17.8	14.8	14.1	10.8	11.1	33.6	34.8	100	100
1985	22.4	22.5	18.3	18.1	14.8	14.4	11.9	11.3	32.6	33.7	100	100
1990	22.6	22.5	18.1	18.3	14.7	14.6	11.9	11.5	32.8	33.1	100	100
1995	22.4	22.3	18.3	18.4	14.5	14.8	11.8	11.7	33.0	32.8	100	100
2000	22.5	21.8	18.5	18.4	14.5	15.0	11.3	11.9	33.2	33.0	100	100
2005	21.7	21.1	18.9	18.2	15.2	15.1	11.4	12.1	32.9	33.5	100	100
2010	19.3	20.4	18.5	17.8	16.0	15.1	12.5	12.3	33.7	34.4	100	100
2015	18.6	19.6	16.6	17.3	15.8	14.9	13.5	12.5	35.5	35.6	100	100
2020	18.9	19.0	16.0	16.8	14.2	14.7	13.4	12.5	37.6	37.0	100	100
2025	18.8	18.4	16.3	16.4	13.6	14.4	12.0	12.4	39.4	38.4	100	100
2030	18.4	17.8	16.1	16.0	13.9	14.1	11.5	12.3	40.1	39.8	100	100
2035	17.4	17.2	16.0	15.6	13.9	13.9	11.9	12.2	40.9	41.2	100	100
2040	16.3	16.6	15.3	15.2	14.0	13.7	12.1	12.1	42.3	42.5	100	100
2045	15.7	15.9	14.6	14.7	13.6	13.4	12.4	12.0	43.8	43.8	100	100
2050	15.3	15.3	14.2	14.3	13.1	13.2	12.2	12.0	45.3	45.2	100	100

Source: own calculations based on UN Population estimates.

Note: the smooth is spline with 7 degrees of freedom.

Table 2.6: Population structure by area of residence

Year	Thousands			Percent		
	Type of Area of Residence			Type of Area of Residence		
	Rural	Urban	Total	Rural	Urban	Total
1950	5,737	340	6,077	94.4	5.6	100
1955	6,531	448	6,979	93.6	6.4	100
1960	7,508	597	8,104	92.6	7.4	100
1965	8,684	818	9,502	91.4	8.6	100
1970	10,090	1,158	11,249	89.7	10.3	100
1975	11,740	1,741	13,481	87.1	12.9	100
1980	13,707	2,555	16,261	84.3	15.7	100
1985	16,311	3,337	19,648	83.0	17.0	100
1990	19,163	4,271	23,433	81.8	18.2	100
1995	22,278	5,214	27,492	81.0	19.0	100
2000	25,237	6,204	31,441	80.3	19.7	100
2005	28,387	7,429	35,817	79.3	20.7	100
2010	31,799	9,064	40,863	77.8	22.2	100
2015	35,242	11,190	46,433	75.9	24.1	100
2020	38,208	13,826	52,034	73.4	26.6	100
2025	40,503	17,070	57,573	70.4	29.6	100
2030	42,315	20,884	63,199	67.0	33.0	100
2035	43,687	25,248	68,935	63.4	36.6	100
2040	44,519	30,130	74,648	59.6	40.4	100
2045	44,722	35,444	80,166	55.8	44.2	100
2050	44,297	41,112	85,410	51.9	48.1	100

Source: own calculations based on UN Population estimates.

Appendix 1: Supporting Material

Table 2.7: Trends in formal jobs and working age population

Year	Formal Employment	Working Age Population*	Formal Employment/ Working Age (percent)		Formal Employment	Formal Employment GDP Elasticity**	
	Millions		Actual	Smooth***	% change	Actual	Smooth
1972	0.72	5.73	12.6	12.8	0.00	-	-
1973	0.76	5.93	12.8	12.9	5.69	0.84	1.15
1974	0.83	6.14	13.5	13.0	8.54	2.08	1.07
1975	0.82	6.35	12.9	13.0	-0.85	-0.27	0.98
1976	0.86	6.59	13.0	13.0	4.76	1.54	0.90
1977	0.90	6.84	13.2	13.1	5.24	1.25	0.82
1978	0.91	7.10	12.8	13.0	1.00	0.12	0.74
1979	0.97	7.37	13.2	13.0	6.58	0.83	0.69
1980	1.01	7.65	13.2	13.0	3.50	0.70	0.66
1981	1.02	7.95	12.9	12.9	1.79	0.46	0.66
1982	1.05	8.26	12.7	12.9	2.15	0.36	0.69
1983	1.09	8.59	12.7	12.8	4.49	0.94	0.75
1984	1.12	8.93	12.5	12.8	2.47	1.07	0.80
1985	1.17	9.28	12.7	12.7	4.82	0.96	0.83
1986	1.22	9.66	12.6	12.7	4.00	0.83	0.83
1987	1.27	10.05	12.6	12.6	3.60	0.66	0.82
1988	1.35	10.46	12.9	12.5	6.40	1.31	0.80
1989	1.37	10.88	12.6	12.4	1.63	0.32	0.78
1990	1.41	11.32	12.5	12.3	3.07	0.61	0.79
1991	1.44	11.80	12.2	12.1	2.27	0.53	0.84
1992	1.46	12.30	11.9	11.9	1.39	0.60	0.90
1993	1.48	12.82	11.5	11.7	0.96	2.39	0.96
1994	1.51	13.36	11.3	11.5	2.03	0.68	0.97
1995	1.56	13.92	11.2	11.3	3.39	0.71	0.96
1996	1.61	14.41	11.2	11.1	3.21	0.70	0.97
1997	1.64	14.92	11.0	10.9	2.24	0.93	1.01
1998	1.68	15.44	10.9	10.7	2.13	1.18	1.07
1999	1.69	15.98	10.6	10.4	0.66	0.47	1.14
2000	1.70	16.54	10.2	10.2	0.36	1.78	1.20
2001	1.68	17.08	9.8	10.0	-1.06	0.96	1.21
2002	1.70	17.63	9.6	9.8	1.37	2.74	1.15
2003	1.73	18.21	9.5	9.6	1.65	0.57	1.02
2004	1.77	18.80	9.4	9.5	2.14	0.42	0.86
2005	1.81	19.41	9.3	9.4	2.66	0.45	0.75
2006	1.86	19.95	9.3	9.3	2.54	0.40	0.69
2007	1.91	20.50	9.3	9.3	2.80	0.40	0.69
2008	1.94	21.06	9.2	9.2	1.78	1.19	0.72
2009	2.00	21.64	9.2	9.2	2.88	1.11	0.75
2010	2.06	22.24	9.3	9.2	3.00	0.54	0.77

Source: Economic Survey, KNBS and UN-Population estimates.

* Annualized figures from Table 2.2.

** Elasticity is equal to the per cent change in formal employment over per cent change in GDP from Table 2.1.

*** Smoothed with spline with 7 degrees of freedom.

Table 2.8: GDP and employment growth scenarios, 2010–2030

Year	High Job Intensity					
	Slow Growth		Solid Growth		Rapid Growth	
	Formal	Informal	Formal	Informal	Formal	Informal
2010	2.3	11.8	2.3	11.8	2.3	11.8
2011	2.4	12.1	2.5	12.0	2.4	12.0
2012	2.5	12.4	2.7	12.2	2.6	12.3
2013	2.6	12.7	2.8	12.5	2.8	12.5
2014	2.7	13.1	3.0	12.7	3.0	12.7
2015	2.8	13.4	3.3	12.9	3.3	12.9
2016	2.9	13.8	3.5	13.1	3.6	13.0
2017	3.0	14.1	3.7	13.4	3.9	13.1
2018	3.1	14.5	4.0	13.6	4.3	13.2
2019	3.2	14.9	4.3	13.8	4.8	13.3
2020	3.3	15.3	4.6	14.0	5.2	13.3
2021	3.4	15.7	4.9	14.2	5.8	13.3
2022	3.5	16.1	5.2	14.4	6.3	13.3
2023	3.6	16.6	5.6	14.6	7.0	13.2
2024	3.8	17.0	6.0	14.8	7.7	13.1
2025	3.9	17.5	6.4	15.0	8.4	12.9
2026	4.0	18.0	6.9	15.1	9.3	12.7
2027	4.2	18.4	7.3	15.3	10.2	12.4
2028	4.3	18.9	7.8	15.4	11.2	12.0
2029	4.5	19.5	8.4	15.5	12.4	11.6
2030	4.6	20.0	9.0	15.6	13.6	11.0
Year	Medium Job Intensity					
	Slow Growth		Solid Growth		Rapid Growth	
	Formal	Informal	Formal	Informal	Formal	Informal
2010	2.3	11.8	2.3	11.8	2.3	11.8
2011	2.4	12.1	2.4	12.1	2.4	12.1
2012	2.4	12.4	2.6	12.3	2.5	12.4
2013	2.5	12.8	2.7	12.6	2.6	12.7
2014	2.6	13.2	2.8	12.9	2.8	12.9
2015	2.6	13.5	2.9	13.2	2.9	13.2
2016	2.7	13.9	3.1	13.5	3.2	13.5
2017	2.7	14.3	3.2	13.8	3.4	13.7
2018	2.8	14.8	3.4	14.2	3.6	14.0
2019	2.9	15.2	3.6	14.5	3.9	14.2
2020	3.0	15.6	3.7	14.8	4.1	14.4
2021	3.0	16.1	3.9	15.2	4.4	14.7
2022	3.1	16.6	4.1	15.5	4.7	14.9
2023	3.2	17.0	4.3	15.9	5.1	15.1
2024	3.3	17.5	4.5	16.3	5.4	15.4
2025	3.3	18.0	4.8	16.6	5.8	15.6
2026	3.4	18.6	5.0	17.0	6.2	15.8
2027	3.5	19.1	5.2	17.4	6.6	16.0
2028	3.6	19.7	5.5	17.8	7.1	16.1
2029	3.7	20.2	5.8	18.2	7.6	16.3
2030	3.8	20.8	6.0	18.5	8.1	16.5

Appendix 1: Supporting Material

Year	Low Job Intensity					
	Slow Growth		Solid Growth		Rapid Growth	
	Formal	Informal	Formal	Informal	Formal	Informal
2010	2.3	11.8	2.3	11.8	2.3	11.8
2011	2.4	12.1	2.4	12.1	2.4	12.1
2012	2.4	12.5	2.5	12.4	2.4	12.5
2013	2.4	12.9	2.5	12.8	2.5	12.8
2014	2.5	13.3	2.6	13.1	2.6	13.1
2015	2.5	13.7	2.7	13.5	2.7	13.5
2016	2.5	14.1	2.7	13.9	2.8	13.8
2017	2.6	14.5	2.8	14.3	2.9	14.2
2018	2.6	15.0	2.9	14.7	3.0	14.6
2019	2.6	15.4	3.0	15.1	3.1	15.0
2020	2.7	15.9	3.1	15.5	3.2	15.3
2021	2.7	16.4	3.1	16.0	3.4	15.7
2022	2.7	16.9	3.2	16.4	3.5	16.1
2023	2.8	17.4	3.3	16.9	3.6	16.6
2024	2.8	18.0	3.4	17.4	3.8	17.0
2025	2.9	18.5	3.5	17.9	3.9	17.4
2026	2.9	19.1	3.6	18.4	4.1	17.9
2027	2.9	19.7	3.7	18.9	4.3	18.3
2028	3.0	20.3	3.8	19.4	4.4	18.8
2029	3.0	20.9	3.9	20.0	4.6	19.3
2030	3.1	21.5	4.0	20.6	4.8	19.8

Source: own calculations based on population trends (reflects assumptions explained in text).

Note: the labels for growth (i.e. slow, strong, and rapid) correspond to annual GDP growth rates of 4, 7, and 10 per cent, respectively; labels for employment elasticity (i.e. low, mid, and high) correspond to ratios of 0.4, 0.7, and 1.0, respectively.

Table 3.1: Unemployment

Age	Rate of Unemployment		Thousands of Unemployed	
	Actual	Smooth	Actual	Smooth
15	23.72	26.82	37,873	40,329
16	32.00	29.66	62,219	67,863
17	30.96	32.09	75,162	94,881
18	34.90	33.91	138,364	119,794
19	35.97	34.87	138,166	139,341
20	37.92	34.84	177,166	151,614
21	29.81	33.91	139,158	155,705
22	35.53	32.40	173,794	152,848
23	30.50	30.35	156,379	143,777
24	25.20	28.05	88,812	131,251
25	26.90	25.78	137,696	118,762
26	21.70	23.61	92,729	106,295
27	21.47	21.55	96,692	94,340
28	22.62	19.48	93,535	82,546
29	16.90	17.29	63,547	70,740
30	15.50	15.18	69,468	59,738
31	11.87	13.38	38,443	50,151
32	10.50	12.13	39,044	43,100
33	10.94	11.47	37,628	38,661
34	10.35	11.24	27,868	36,178
35	15.28	11.14	55,136	34,573
36	10.86	10.88	31,030	32,423
37	8.28	10.57	24,996	30,143
38	9.75	10.35	24,549	28,400
39	10.44	10.15	22,568	27,204
40	13.52	9.73	42,449	25,926
41	7.12	9.02	15,684	23,788
42	8.75	8.25	25,941	21,367
43	6.99	7.58	17,292	18,952
44	6.13	7.18	10,877	17,047
45	6.93	7.11	18,418	15,950
46	6.45	7.32	13,141	15,349
47	9.42	7.69	20,312	14,976
48	7.53	8.07	12,545	14,531
49	6.81	8.42	9,923	14,153
50	11.04	8.67	19,260	13,807

Appendix 1: Supporting Material

Age	Rate of Unemployment		Thousands of Unemployed	
	Actual	Smooth	Actual	Smooth
51	10.83	8.63	15,058	13,115
52	6.97	8.35	9,796	12,195
53	5.28	8.14	9,311	11,439
54	9.34	8.15	9,952	10,992
55	8.34	8.26	12,250	10,696
56	8.53	8.35	11,294	10,272
57	7.83	8.39	10,606	9,598
58	6.73	8.34	6,019	8,721
59	11.11	8.05	8,814	7,748
60	8.47	7.29	8,961	6,565
61	5.27	6.13	3,533	5,156
62	4.37	4.80	3,336	3,737
63	2.16	3.48	1,649	2,414
64	2.93	2.22	1,878	1,167

Source: own calculations based on KIHBS 2005/06.

Note: Following the national definition, an individual aged 15-64 years is said to be unemployed if in the week prior to the survey, were without a job, available for work, willing to work and sought work (KNBS, 2008).

Table 3.2: Distribution of the working-age population across activities (thousands of people and percent)

Age group	Thousands of people						Percent share*					
	Formal	Informal	Unemployed	Student	Home	Other	Formal	Informal	Unemployed	Student	Home	Other
15	231	121,578	37,873	750,072	27,131	51,348	0.0	14.8	7.4	69.1	3.6	5.2
16	129	132,060	62,219	601,837	33,209	44,590	0.0	18.3	9.3	63.2	4.0	5.2
17	5,199	162,377	75,162	515,158	38,837	41,398	0.4	21.9	11.4	56.8	4.4	5.2
18	2,788	255,308	138,364	451,310	41,351	52,108	0.8	25.8	13.4	49.9	4.8	5.2
19	7,130	238,805	138,166	330,425	41,755	42,337	1.4	29.8	15.5	42.9	5.3	5.3
20	7,191	282,810	177,166	211,424	56,941	39,688	2.1	33.8	17.3	35.9	5.7	5.3
21	20,327	307,376	139,158	165,388	47,517	33,020	2.8	37.8	18.8	29.2	6.1	5.3
22	22,496	292,818	173,794	106,813	48,632	35,452	3.7	41.7	20.0	22.9	6.4	5.3
23	32,729	323,588	156,379	72,363	42,192	40,697	4.7	45.4	20.7	17.2	6.7	5.2
24	33,728	229,863	88,812	46,247	32,156	33,686	5.8	48.9	21.0	12.3	6.9	5.2
25	40,991	333,186	137,696	39,381	43,134	29,696	6.9	52.0	20.8	8.1	7.1	5.1
26	40,466	294,094	92,729	18,767	32,269	25,453	8.0	54.7	20.2	4.8	7.3	4.9
27	46,812	306,838	96,692	26,330	39,635	16,078	9.2	57.0	19.3	2.2	7.5	4.8
28	55,807	264,095	93,535	10,380	36,914	24,936	10.3	59.0	18.2	0.4	7.6	4.6
29	60,533	251,834	63,547	6,116	34,829	14,774	11.2	60.1	16.7	0.0	7.6	4.4
30	57,571	321,142	69,468	4,852	38,484	25,383	12.0	61.0	15.2	0.0	7.6	4.2
31	47,601	237,711	38,443	1,264	29,229	19,191	12.7	61.9	13.8	0.0	7.5	4.1
32	72,304	260,610	39,044	727	35,117	19,298	13.3	62.7	12.5	0.0	7.5	3.9
33	47,625	258,799	37,628	4,071	25,624	12,005	13.8	63.5	11.5	0.0	7.5	3.8
34	55,882	185,375	27,868	1,087	26,893	5,166	14.1	64.1	10.6	0.0	7.4	3.7
35	45,311	260,356	55,136	2,203	24,631	18,357	14.4	64.7	9.9	0.0	7.3	3.7
36	50,020	204,679	31,030	742	28,051	11,772	14.6	65.1	9.4	0.0	7.2	3.7
37	31,275	245,650	24,996	637	17,934	12,582	14.8	65.4	8.9	0.0	7.1	3.8
38	44,568	182,747	24,549	194	23,681	12,160	15.0	65.6	8.5	0.0	7.0	3.9
39	45,940	147,669	22,568	62	13,710	5,747	15.1	65.7	8.2	0.0	6.9	4.0
40	48,669	222,855	42,449	1,854	24,996	23,214	15.3	65.6	7.9	0.1	6.9	4.2
41	45,971	158,495	15,684	-	18,200	10,673	15.4	65.6	7.6	0.2	6.8	4.4
42	37,289	233,338	25,941	1,160	21,200	12,504	15.5	65.5	7.3	0.3	6.7	4.7

Age group	Thousands of people						Percent share*					
	Formal	Informal	Unemployed	Student	Home	Other	Formal	Informal	Unemployed	Student	Home	Other
43	45,923	184,178	17,292	145	21,325	10,468	15.6	65.4	7.1	0.3	6.7	5.0
44	27,426	139,167	10,877	1,633	13,114	8,023	15.6	65.2	6.9	0.3	6.6	5.3
45	61,243	185,989	18,418	-	17,475	22,162	15.6	65.0	6.8	0.3	6.6	5.8
46	34,130	156,596	13,141	-	17,282	12,983	15.5	64.7	6.7	0.3	6.5	6.3
47	34,422	160,863	20,312	235	12,196	15,804	15.1	64.6	6.7	0.3	6.5	6.8
48	38,903	115,221	12,545	-	14,131	12,492	14.7	64.4	6.7	0.2	6.6	7.4
49	24,846	110,958	9,923	83	11,520	16,113	14.0	64.4	6.8	0.2	6.6	7.9
50	22,921	132,275	19,260	-	17,412	31,490	13.2	64.6	6.8	0.1	6.7	8.5
51	15,181	108,774	15,058	-	11,509	11,095	12.4	64.9	6.8	0.1	6.8	9.0
52	20,625	110,022	9,796	-	9,885	13,924	11.4	65.4	6.8	0.1	6.9	9.4
53	26,621	140,346	9,311	1,166	15,139	18,709	10.4	65.8	6.8	0.1	7.0	9.9
54	12,783	83,844	9,952	-	8,436	11,215	9.4	66.3	6.7	0.1	7.1	10.4
55	11,298	123,377	12,250	-	10,611	21,128	8.3	66.7	6.7	0.1	7.3	10.9
56	10,464	110,665	11,294	-	12,717	16,059	7.2	67.0	6.5	0.1	7.5	11.6
57	7,387	117,530	10,606	707	11,567	15,825	6.2	67.2	6.4	0.1	7.8	12.3
58	5,511	77,848	6,019	-	5,844	14,091	5.2	67.3	6.1	0.1	8.1	13.2
59	4,181	66,329	8,814	-	14,688	16,791	4.2	67.3	5.7	0.1	8.4	14.2
60	5,109	91,770	8,961	-	16,319	34,769	3.3	67.5	5.2	0.1	8.7	15.2
61	970	62,593	3,533	-	9,877	9,658	2.3	67.8	4.6	0.1	8.9	16.2
62	310	72,632	3,336	-	6,125	17,856	1.3	68.3	3.9	0.2	9.0	17.3
63	3,697	71,058	1,649	888	9,634	17,923	0.2	68.9	3.0	0.2	9.1	18.6
64	-	62,287	1,878	-	6,493	16,596	0.0	68.9	1.9	0.3	9.1	19.8

Source: own calculations based on KIHBS 2005/06.

Note: plotted data in the report correspond to percentage calculations on smoothed data.

* Per cent are calculated over smoothed estimates and all negative estimates are arbitrarily set to zero.

Table 3.3: Unemployment trends, 2010–2050

Year	Thousands					Percent shares				
	Age cohort					Age cohort				
	15-19	20-24	25-29	30-34	35-64	15-19	20-24	25-29	30-34	35-64
2005	428	818	554	234	482	17.0	32.5	22.0	9.3	19.2
2010	436	919	667	295	565	15.1	31.9	23.1	10.2	19.6
2015	482	943	758	364	684	14.9	29.2	23.5	11.3	21.2
2020	565	1,042	780	415	832	15.6	28.7	21.5	11.4	22.9
2025	644	1,223	862	428	1,004	15.5	29.4	20.7	10.3	24.1
2030	726	1,393	1,012	473	1,175	15.2	29.2	21.2	9.9	24.6
2035	780	1,570	1,153	555	1,364	14.4	29.0	21.3	10.2	25.2
2040	819	1,689	1,301	634	1,582	13.6	28.0	21.6	10.5	26.3
2045	873	1,778	1,402	717	1,812	13.3	27.0	21.3	10.9	27.5
2050	936	1,896	1,479	775	2,057	13.1	26.5	20.7	10.9	28.8

Source: own calculations based on KIHBS 2005/06.

Note: trends are obtained assuming constant age specific unemployment and participation rates on UN population estimates.

Table 4.1: Youth unemployment rate and number of unemployed

Age	Rate, percent				Thousands			
	Rural		Urban		Rural		Urban	
	Actual	Smooth	Actual	Smooth	Actual	Smooth	Actual	Smooth
15	21.9	22.2	44.1	55.2	32,081	30,479	5,792	9,850
16	23.0	23.9	70.0	58.6	36,153	45,736	26,066	22,127
17	24.4	25.6	59.9	60.7	48,174	60,994	26,989	33,887
18	28.5	27.0	62.6	61.1	91,856	74,958	46,507	44,837
19	28.7	27.8	63.3	59.8	87,057	85,215	51,109	54,126
20	31.8	27.8	53.1	56.9	105,712	90,791	71,454	60,823
21	21.0	27.2	54.7	53.1	72,403	91,705	66,755	64,000
22	29.5	26.3	52.7	48.6	107,147	89,044	66,646	63,804
23	25.9	24.8	40.4	43.7	90,084	82,778	66,295	61,000
24	22.1	23.0	32.3	39.2	54,311	74,404	34,501	56,846
25	21.1	21.1	38.2	35.5	71,186	66,117	66,510	52,645
26	17.7	19.2	31.2	32.4	53,389	58,379	39,340	47,916
27	17.6	17.5	29.1	29.4	52,475	51,538	44,217	42,802
28	16.1	16.0	34.4	26.3	42,818	45,583	50,717	36,963
29	14.4	14.5	22.4	22.9	37,398	40,405	26,149	30,335
30	16.4	13.0	13.3	19.8	52,029	35,560	17,439	24,177
31	8.3	11.5	20.7	17.6	19,236	30,647	19,207	19,504
32	10.5	10.4	10.5	16.2	27,716	26,570	11,328	16,530
33	9.1	9.7	15.8	15.8	22,730	23,521	14,898	15,140
34	8.6	9.3	15.1	15.8	16,916	21,501	10,952	14,677
35	9.9	9.2	26.7	15.6	24,278	20,342	30,858	14,231
36	10.6	9.2	11.5	14.8	21,980	19,492	9,050	12,930
37	7.3	9.2	11.5	14.0	16,972	18,743	8,024	11,400
38	9.4	9.2	10.5	13.6	16,068	18,197	8,481	10,204
39	9.1	9.0	14.0	13.7	14,102	17,782	8,466	9,422
40	12.6	8.5	16.1	14.0	29,643	17,074	12,806	8,852
41	6.6	7.7	9.1	14.2	11,742	15,540	3,942	8,248
42	6.2	6.8	21.4	14.1	15,244	13,732	10,698	7,635
43	3.6	6.3	19.4	13.2	7,091	12,176	10,200	6,776
44	6.1	6.1	6.3	11.7	8,725	11,322	2,152	5,726
45	7.5	6.3	5.5	10.5	14,503	11,080	3,915	4,870
46	4.6	6.6	14.0	10.3	7,513	11,054	5,628	4,296
47	10.2	7.0	5.7	10.7	18,147	11,038	2,164	3,938
48	6.0	7.3	12.5	11.8	7,754	10,736	4,791	3,795
49	6.4	7.5	8.5	13.2	7,704	10,407	2,219	3,746
50	8.8	7.6	25.7	14.4	13,240	10,119	6,020	3,688

Appendix 1: Supporting Material

Age	Rate, percent				Thousands			
	Rural		Urban		Rural		Urban	
	Actual	Smooth	Actual	Smooth	Actual	Smooth	Actual	Smooth
51	8.7	7.5	20.4	14.5	9,906	9,669	5,152	3,446
52	7.4	7.3	4.5	14.1	8,909	9,109	886	3,086
53	5.0	7.1	6.8	14.2	7,652	8,587	1,659	2,852
54	7.1	7.0	23.9	14.9	6,576	8,215	3,376	2,778
55	7.8	7.0	12.4	15.4	9,984	7,963	2,266	2,734
56	6.1	7.2	20.6	15.7	6,670	7,662	4,624	2,610
57	7.0	7.3	13.9	15.7	8,450	7,283	2,156	2,315
58	6.4	7.4	11.4	15.8	5,249	6,774	770	1,947
59	9.6	7.2	19.6	16.0	6,513	6,141	2,301	1,607
60	9.0	6.5	5.3	16.3	8,208	5,273	753	1,292
61	4.5	5.4	24.5	16.3	2,898	4,131	634	1,026
62	2.5	4.1	24.1	15.0	1,706	2,954	1,629	783
63	1.8	3.0	10.3	12.0	1,340	1,902	309	512
64	2.9	1.9	2.8	8.1	1,728	946	150	221

Source: own calculations based on KIHBS 2005/06.

Note: smooth uses a spline with 7 degrees of freedom (see appendix 2).

Table 4.2: Youth activities by age and area of residence (percent share in population)

Age	Rural areas						Urban areas					
	Formal	Informal	Unemployed	Student	Home	Other	Formal	Informal	Unemployed	Student	Home	Other
15	0.0	13.3	3.7	74.3	3.1	5.6	0.1	5.7	4.6	86.7	0.5	2.3
16	0.0	16.4	4.9	70.1	4.2	4.3	0.1	8.0	18.8	62.1	1.4	9.5
17	0.4	21.1	6.9	61.9	4.1	5.6	1.5	11.1	19.0	59.3	7.2	1.8
18	0.1	29.8	11.9	48.3	4.1	5.7	1.3	14.9	27.2	46.2	5.8	4.6
19	0.9	32.7	13.5	42.1	5.3	5.5	0.9	18.4	33.2	38.3	4.9	4.4
20	0.8	38.1	18.1	30.3	7.3	5.3	1.3	31.5	37.2	18.1	7.4	4.4
21	2.1	48.8	13.5	23.5	7.4	4.6	5.0	26.1	37.5	22.4	4.3	4.7
22	2.8	46.7	20.8	15.9	8.1	5.7	4.8	31.7	40.7	15.1	4.1	3.6
23	2.7	53.5	19.6	10.4	7.3	6.6	9.8	37.3	31.9	11.9	4.2	4.9
24	6.4	52.8	16.8	9.3	6.4	8.1	9.1	41.8	24.3	11.4	8.1	5.2
25	3.5	59.4	16.8	6.5	8.0	5.9	13.0	40.7	33.2	6.0	4.6	2.4
26	3.4	63.4	14.4	4.1	8.1	6.5	20.9	44.3	29.5	2.7	1.6	1.0
27	4.4	63.5	14.5	5.2	8.9	3.5	18.1	45.1	26.0	4.4	4.4	2.0
28	9.0	61.0	13.4	2.3	8.3	6.1	16.3	41.7	30.4	1.9	6.2	3.4
29	7.9	65.5	12.4	1.3	8.5	4.3	28.2	41.6	20.1	1.6	7.0	1.4
30	6.8	66.2	14.3	0.8	6.7	5.2	21.5	52.5	11.4	1.3	9.2	4.2
31	7.3	71.7	7.2	0.1	7.8	5.8	26.6	43.1	18.2	0.8	7.8	3.4
32	12.2	63.8	8.9	0.0	9.7	5.4	29.6	53.5	9.7	0.6	4.2	2.3
33	8.2	71.7	8.0	1.2	7.1	3.8	24.0	54.2	14.7	0.7	5.2	1.2
34	11.5	69.5	7.6	0.0	9.4	2.0	37.8	38.8	13.6	1.4	7.4	1.0
35	7.7	70.1	8.5	0.4	7.2	6.1	19.3	50.1	25.3	1.0	3.5	0.8

Source: own calculations based on KIHBS 2005/06.

Table 4.3: Youth unemployment rate and number of unemployed by gender

Age	Thousands		Rate, percent	
	Male	Fermale	Male	Fermale
15	16,535	21,337	3.2	4.5
16	26,526	35,693	6.0	8.3
17	24,230	50,932	6.0	11.7
18	56,268	82,096	11.6	18.0
19	55,830	82,336	13.9	20.8
20	71,107	106,059	18.7	26.9
21	54,426	84,732	15.0	24.2
22	66,723	107,071	21.4	29.0
23	53,686	102,693	18.0	27.8
24	34,607	54,205	15.2	22.8
25	43,369	94,327	14.0	29.9
26	32,238	60,491	14.8	21.2
27	36,000	60,693	15.0	20.7
28	38,844	54,691	16.2	22.2
29	22,931	40,616	10.7	18.7
30	23,113	46,355	9.0	17.8
31	14,242	24,202	7.3	13.5
32	12,713	26,331	5.8	12.7
33	11,035	26,592	6.3	12.6
34	8,616	19,251	5.5	13.3
35	14,860	40,276	8.1	18.2
36	11,204	19,826	7.8	10.8
37	9,382	15,614	5.9	9.0
38	10,464	14,085	7.1	10.0
39	10,618	11,949	10.2	9.1
40	12,627	29,822	7.2	15.8
41	6,152	9,532	5.7	6.7
42	11,568	14,374	7.2	8.4
43	12,764	4,527	9.8	3.0
44	4,780	6,097	5.0	5.8
45	8,505	9,912	5.5	6.6
46	5,619	7,523	4.9	6.2
47	8,617	11,695	7.2	9.4
48	4,182	8,363	4.4	8.6
49	2,987	6,936	3.9	7.2
50	7,137	12,123	6.6	10.6

Appendix 1: Supporting Material

Age	Thousands		Rate, percent	
	Male	Fermale	Male	Fermale
51	5,052	10,006	6.3	12.3
52	6,886	2,910	8.3	3.6
53	4,710	4,601	4.4	4.5
54	7,640	2,312	12.7	3.5
55	8,750	3,500	9.9	3.9
56	7,568	3,726	10.0	4.3
57	5,837	4,769	7.0	6.0
58	1,277	4,742	2.1	9.6
59	5,474	3,340	8.6	7.1
60	6,395	2,566	7.7	3.5
61	1,739	1,794	4.5	3.7
62	1,939	1,396	4.5	2.5
63	1,032	617	2.3	1.0
64	849	1,029	2.1	2.2

Source: own calculations based on KIHBS 2005/06.

Table 4.4: Youth activities by age and gender (percent share of the population)

Age	Female activities (%) in population						Male activities (%) in population						All	
	Formal	Informal	Unemployed	Student	Home	Other	All	Formal	Informal	Unemployed	Student	Home		Other
15	0.0	13.3	3.7	74.3	3.1	5.6	100	0.1	5.7	4.6	86.7	0.5	2.3	100
16	0.0	16.4	4.9	70.1	4.2	4.3	100	0.1	8.0	18.8	62.1	1.4	9.5	100
17	0.4	21.1	6.9	61.9	4.1	5.6	100	1.5	11.1	19.0	59.3	7.2	1.8	100
18	0.1	29.8	11.9	48.3	4.1	5.7	100	1.3	14.9	27.2	46.2	5.8	4.6	100
19	0.9	32.7	13.5	42.1	5.3	5.5	100	0.9	18.4	33.2	38.3	4.9	4.4	100
20	0.8	38.1	18.1	30.3	7.3	5.3	100	1.3	31.5	37.2	18.1	7.4	4.4	100
21	2.1	48.8	13.5	23.5	7.4	4.6	100	5.0	26.1	37.5	22.4	4.3	4.7	100
22	2.8	46.7	20.8	15.9	8.1	5.7	100	4.8	31.7	40.7	15.1	4.1	3.6	100
23	2.7	53.5	19.6	10.4	7.3	6.6	100	9.8	37.3	31.9	11.9	4.2	4.9	100
24	6.4	52.8	16.8	9.3	6.4	8.1	100	9.1	41.8	24.3	11.4	8.1	5.2	100
25	3.5	59.4	16.8	6.5	8.0	5.9	100	13.0	40.7	33.2	6.0	4.6	2.4	100
26	3.4	63.4	14.4	4.1	8.1	6.5	100	20.9	44.3	29.5	2.7	1.6	1.0	100
27	4.4	63.5	14.5	5.2	8.9	3.5	100	18.1	45.1	26.0	4.4	4.4	2.0	100
28	9.0	61.0	13.4	2.3	8.3	6.1	100	16.3	41.7	30.4	1.9	6.2	3.4	100
29	7.9	65.5	12.4	1.3	8.5	4.3	100	28.2	41.6	20.1	1.6	7.0	1.4	100
30	6.8	66.2	14.3	0.8	6.7	5.2	100	21.5	52.5	11.4	1.3	9.2	4.2	100
31	7.3	71.7	7.2	0.1	7.8	5.8	100	26.6	43.1	18.2	0.8	7.8	3.4	100
32	12.2	63.8	8.9	0.0	9.7	5.4	100	29.6	53.5	9.7	0.6	4.2	2.3	100
33	8.2	71.7	8.0	1.2	7.1	3.8	100	24.0	54.2	14.7	0.7	5.2	1.2	100
34	11.5	69.5	7.6	0.0	9.4	2.0	100	37.8	38.8	13.6	1.4	7.4	1.0	100
35	7.7	70.1	8.5	0.4	7.2	6.1	100	19.3	50.1	25.3	1.0	3.5	0.8	100

Source: own calculations based on KIHBS 2005/06.

Appendix 1: Supporting Material

Table 4.5: Youth unemployment rate and number of unemployed by education

Age	Rate, percent				Thousands			
	No education	Primary	Secondary	Tertiary	No education	Primary	Secondary	Tertiary
15	41.28	18.36	3.28	0.00	17.0	20.0	0.3	0.0
16	47.64	29.02	21.21	0.00	16.2	43.2	1.8	0.0
17	48.43	26.45	36.44	0.00	15.5	45.3	13.8	0.0
18	39.73	34.20	34.38	0.00	21.4	87.4	28.3	0.0
19	36.97	33.68	42.57	0.00	9.9	81.8	44.8	0.0
20	43.41	34.82	43.40	100.00	17.1	95.3	63.6	0.1
21	36.86	22.39	42.34	0.00	11.0	60.6	67.2	0.0
22	31.27	28.38	49.22	35.40	13.4	80.5	78.5	0.8
23	43.92	24.16	39.47	22.41	13.3	71.6	67.6	1.2
24	40.05	19.28	30.60	25.77	10.8	36.2	39.0	1.0
25	37.09	24.78	26.61	51.89	15.8	70.3	46.2	4.8
26	43.00	14.00	28.52	23.59	13.4	31.9	45.6	1.3
27	39.93	23.50	14.95	33.77	10.4	59.2	24.6	2.3
28	30.31	14.87	30.52	34.54	8.1	30.8	51.2	2.9
29	25.85	17.26	15.53	13.38	5.3	33.5	24.0	0.5
30	47.33	11.63	11.62	8.57	23.9	27.4	17.1	0.6
31	36.57	12.14	6.74	17.62	8.1	20.2	8.5	0.9
32	21.15	8.93	11.08	9.41	5.9	17.5	14.8	0.8
33	14.94	11.08	9.82	0.00	4.1	19.6	12.5	0.0
34	22.06	10.56	8.61	4.96	4.1	14.4	8.3	0.7
35	30.20	16.26	10.87	0.00	9.9	31.8	13.4	0.0

Source: own calculations based on KIHBS 2005/06.

Appendix 1: Supporting Material

Table 4.6: Youth activities by age and education (percent share of population)

Age	Youth with No Education					
	Formal	Informal	Unemployed	Student	Home-maker	Other
15	0.0	43.9	30.9	9.5	9.7	5.9
16	0.0	37.7	34.3	7.9	7.1	12.9
17	0.0	34.7	32.6	2.1	13.3	17.4
18	0.1	47.0	31.0	4.1	6.8	11.1
19	0.0	38.1	22.4	1.6	21.5	16.4
20	0.6	38.1	29.7	0.0	20.5	11.1
21	2.1	44.5	27.2	1.3	20.2	4.7
22	1.6	55.8	26.1	0.3	10.2	6.1
23	0.0	40.5	31.7	0.0	22.1	5.8
24	1.6	45.2	31.2	0.0	13.2	8.8
25	1.8	43.9	27.0	0.0	22.7	4.6
26	2.5	39.4	31.6	0.5	16.6	9.4
27	0.0	43.3	28.8	0.0	21.1	6.7
28	3.0	44.6	20.7	0.0	25.3	6.3
29	3.3	49.3	18.3	0.6	20.6	7.8
30	0.0	37.7	33.9	0.0	18.3	10.1
31	4.1	43.7	27.5	0.0	20.8	3.9
32	0.2	52.3	14.1	0.0	23.7	9.7
33	0.2	66.3	11.7	0.0	17.8	4.0
34	0.0	60.9	17.2	0.2	19.8	1.9
35	1.0	50.5	22.3	0.1	18.9	7.2

Age	Youth with Primary Education					
	Formal	Informal	Unemployed	Student	Home-maker	Other
15	0.0	10.4	2.3	80.2	2.5	4.6
16	0.0	15.5	6.3	71.3	3.4	3.5
17	0.9	20.5	7.7	62.1	4.5	4.4
18	0.1	29.5	15.4	45.4	4.5	5.1
19	1.4	35.4	18.7	37.1	4.5	2.9
20	0.9	42.4	23.1	21.1	7.1	5.4
21	1.7	55.8	16.6	14.0	7.4	4.5
22	2.8	53.0	22.1	8.9	8.3	4.8
23	3.8	61.4	20.8	2.3	6.5	5.2
24	5.9	58.2	15.3	4.5	9.6	6.6
25	2.5	62.0	21.2	2.3	7.5	4.5
26	4.8	68.7	12.0	1.5	8.2	4.8
27	4.6	61.7	20.4	1.7	9.2	2.5
28	5.8	69.4	13.1	0.8	6.9	4.0
29	6.6	64.4	14.8	1.4	8.6	4.3
30	6.5	74.2	10.6	0.3	4.9	3.4
31	6.5	69.9	10.6	0.2	7.9	4.9
32	11.1	70.1	8.0	0.0	8.3	2.6
33	5.8	74.5	10.0	0.0	6.2	3.4
34	7.2	71.2	9.3	0.0	9.8	2.5
35	4.0	71.9	14.8	0.5	5.7	3.1

Appendix 1: Supporting Material

Age	Youth with Secondary Education					
	Formal	Informal	Unemployed	Student	Home-maker	Other
15	0.3	12.1	0.4	82.9	1.0	3.3
16	0.0	5.4	1.4	81.5	4.5	7.3
17	0.0	12.5	7.1	76.0	2.8	1.6
18	0.7	18.1	9.9	64.3	3.9	3.2
19	0.3	20.0	15.1	55.1	4.2	5.4
20	1.1	27.8	22.2	41.7	5.0	2.2
21	3.8	28.5	23.8	35.6	4.4	3.9
22	4.2	29.4	32.6	27.3	5.2	1.2
23	6.8	37.1	28.6	20.1	3.9	3.5
24	10.5	42.8	23.5	16.6	2.8	3.8
25	13.0	48.3	22.2	12.5	2.3	1.7
26	13.7	50.9	25.7	5.1	1.9	2.7
27	16.0	59.3	13.2	6.6	2.7	2.2
28	18.1	42.3	26.5	3.3	5.1	4.6
29	25.4	53.1	14.4	1.3	5.5	0.3
30	21.6	56.4	10.2	1.9	6.7	3.2
31	21.2	63.8	6.1	0.0	5.8	3.1
32	26.3	55.1	10.2	0.0	3.9	4.5
33	20.1	62.0	8.9	2.1	4.7	2.2
34	29.7	54.2	7.9	1.0	6.6	0.6
35	22.5	61.4	10.2	0.0	2.7	3.2

Age	Youth with Tertiary Education					
	Formal	Informal	Unemployed	Student	Home-maker	Other
15	0.0	0.0	0.0	0.0	0.0	0.0
16	0.0	0.0	0.0	100.0	0.0	0.0
17	0.0	0.0	0.0	100.0	0.0	0.0
18	11.1	0.0	0.0	88.9	0.0	0.0
19	0.0	0.0	0.0	100.0	0.0	0.0
20	0.0	0.0	6.5	93.5	0.0	0.0
21	6.4	8.4	0.0	85.2	0.0	0.0
22	12.1	1.8	7.6	78.4	0.0	0.0
23	13.9	5.7	5.7	74.5	0.0	0.2
24	15.1	8.3	8.1	66.2	0.9	1.4
25	22.7	5.5	30.4	34.0	0.0	7.4
26	20.8	17.3	11.8	50.2	0.0	0.0
27	29.4	4.7	17.4	47.7	0.9	0.0
28	44.2	5.6	26.3	16.6	6.3	1.0
29	32.9	39.1	11.1	10.0	6.9	0.0
30	55.3	26.7	7.7	10.4	0.0	0.0
31	53.6	16.4	15.0	15.1	0.0	0.0
32	67.2	17.9	8.8	0.0	0.0	6.0
33	75.4	5.0	0.0	11.8	6.1	1.7
34	79.8	15.2	5.0	0.0	0.0	0.0
35	62.2	15.3	0.0	11.9	0.0	10.6

Source: own calculations based on KIHBS 2005/06.

Appendix 1: Supporting Material

Table 4.7: Youth unemployment rate and number of unemployed by age and household income

Age	Rate, percent					Thousands				
	Bottom	Low	Mid	Rich	Top	Bottom	Low	Mid	Rich	Top
15	39.46	27.60	27.38	13.57	12.14	13.41	7.58	8.00	4.73	4.14
16	37.19	35.04	37.50	28.93	14.45	15.80	18.38	14.28	9.76	3.99
17	32.39	33.99	33.80	23.11	31.34	15.59	19.75	13.70	11.09	15.03
18	42.63	35.65	35.40	28.60	30.90	36.84	27.40	30.12	21.82	22.19
19	45.12	30.68	39.44	33.21	31.93	30.72	24.04	34.38	25.21	23.81
20	37.48	38.49	41.11	36.30	35.90	29.66	39.48	40.57	36.45	31.00
21	31.92	27.39	27.23	34.76	28.22	27.91	27.52	22.77	31.00	29.97
22	39.36	31.44	42.56	32.75	32.98	28.89	30.46	42.30	32.36	39.78
23	29.28	39.79	38.81	18.42	29.38	20.99	33.44	41.49	21.85	38.60
24	31.96	31.86	25.46	27.89	16.78	15.72	20.76	15.57	17.78	18.99
25	32.26	30.15	23.26	29.01	23.03	23.50	25.30	19.96	33.57	35.36
26	23.49	25.21	20.14	16.97	23.23	15.27	16.26	14.93	15.42	30.84
27	28.81	18.95	20.47	22.83	18.83	17.28	11.62	18.06	25.08	24.65
28	32.83	28.96	23.85	21.59	15.94	17.68	13.78	18.79	23.35	19.93
29	28.34	24.58	15.04	14.23	12.33	12.47	13.31	11.61	10.75	15.41
30	34.80	18.66	13.54	14.42	8.58	18.31	14.42	9.77	14.43	12.53
31	16.33	16.20	13.18	9.40	9.35	7.14	7.28	6.89	7.44	9.69
32	21.59	14.69	11.56	6.91	6.75	7.35	9.89	8.20	5.54	8.07
33	13.71	11.87	14.87	6.24	10.92	6.78	6.13	8.87	5.57	10.27
34	14.97	16.98	9.35	9.96	6.81	3.87	7.08	4.92	5.84	6.16
35	31.00	18.32	10.74	12.22	10.03	16.75	11.83	6.52	10.20	9.82

Source: own calculations based on KIHBS 2005/06.

Table 4.8: Youth activities by age and income category (percent share of population)

Age	Formal					Home-maker					Informal				
	Bottom	Low	Mid	Rich	Top	Bottom	Low	Mid	Rich	Top	Bottom	Low	Mid	Rich	Top
15	0.0	0.0	0.1	0.0	0.0	3.6	3.6	1.7	2.1	2.6	9.7	8.8	10.6	15.7	18.8
16	0.1	0.0	0.0	0.0	0.0	2.3	3.3	3.5	4.9	6.0	14.1	15.5	13.4	14.6	19.2
17	0.9	0.7	0.7	0.5	0.1	4.4	5.7	3.1	3.8	6.3	17.1	18.3	15.2	22.5	26.0
18	0.1	1.2	0.0	0.2	0.0	2.3	3.6	3.9	3.6	9.6	24.1	23.9	27.6	29.5	31.7
19	0.0	0.6	1.1	1.4	1.5	4.3	3.3	7.2	5.5	5.9	24.4	30.4	29.3	30.4	35.6
20	0.3	0.6	0.8	1.2	1.7	4.5	7.4	5.5	8.0	11.6	35.4	35.7	35.5	37.5	38.6
21	0.7	4.1	2.9	1.5	4.5	4.2	2.9	8.4	9.7	8.3	44.9	42.6	43.9	40.0	44.2
22	2.0	2.5	1.1	5.3	5.1	5.3	7.5	5.8	5.8	10.2	36.3	47.8	41.9	44.2	44.0
23	2.0	2.4	4.0	7.8	6.3	8.5	7.7	3.5	4.9	7.7	51.8	41.3	44.2	53.6	50.1
24	2.0	8.5	9.0	4.5	10.1	5.1	5.3	9.1	8.8	6.2	45.1	45.1	45.2	45.3	60.0
25	2.3	6.1	3.3	8.6	9.2	4.7	7.9	6.0	7.2	7.7	53.8	48.0	60.1	47.5	57.5
26	3.2	9.6	8.9	10.3	7.5	4.4	11.4	4.6	7.8	4.8	61.3	49.6	56.6	60.8	61.0
27	8.7	6.3	10.0	7.0	11.0	3.4	12.5	11.0	7.1	3.8	50.8	49.6	54.3	62.5	64.6
28	1.0	3.5	11.9	8.9	21.6	6.6	13.3	5.8	6.6	7.6	55.6	50.8	54.5	58.6	51.6
29	10.2	1.9	8.8	20.9	19.9	9.0	5.9	7.4	10.5	7.6	50.5	65.0	62.6	51.1	60.3
30	0.0	7.0	8.8	10.8	19.5	6.0	10.2	10.8	6.3	5.3	53.8	62.0	59.6	65.8	64.4
31	15.5	3.8	11.2	14.7	15.8	7.8	12.8	9.4	8.4	3.6	57.9	56.8	63.2	63.9	70.2
32	3.8	17.0	14.1	12.5	25.9	14.7	9.1	5.5	10.2	6.0	61.2	58.0	62.1	66.2	58.3
33	4.0	3.1	13.1	13.5	20.7	6.9	5.2	5.6	8.3	6.5	74.6	70.4	62.9	70.6	60.5
34	12.0	12.8	12.4	24.3	23.1	13.6	10.1	8.3	11.5	5.4	59.8	59.5	67.5	54.2	63.9
35	2.6	5.3	14.2	12.2	17.3	9.1	8.2	7.6	3.0	4.4	56.6	65.2	64.3	69.2	63.4

Source: own calculations based on KIHBS 2005/06.

Table 4.8: Youth activities by age and income category (contd.)

Age	Student					Unemployed					Other				
	Bottom	Low	Mid	Rich	Top	Bottom	Low	Mid	Rich	Top	Bottom	Low	Mid	Rich	Top
15	73.9	81.2	76.9	73.7	72.4	6.3	3.3	4.0	2.5	2.6	6.5	3.1	6.7	6.1	3.6
16	69.4	68.6	70.1	68.4	67.4	8.4	8.4	8.0	5.9	3.2	5.8	4.3	5.1	6.3	4.1
17	63.1	63.0	67.4	60.3	50.1	8.6	9.8	8.1	6.9	11.9	5.9	2.5	5.5	6.0	5.5
18	49.9	50.0	50.0	49.1	38.8	18.0	13.9	15.1	11.9	14.2	5.6	7.4	3.4	5.7	5.7
19	45.6	49.7	38.1	37.7	34.4	20.0	13.7	19.8	15.8	17.4	5.8	2.2	4.5	9.2	5.2
20	30.2	29.4	30.3	24.9	20.9	21.4	22.7	25.3	22.1	22.6	8.2	4.2	2.6	6.4	4.7
21	26.4	27.7	23.7	19.8	18.6	21.4	17.6	17.5	22.1	19.2	2.5	4.9	3.5	6.8	5.1
22	23.3	15.8	13.0	15.6	12.5	24.9	23.1	31.9	24.1	24.1	8.1	3.3	6.3	5.0	4.0
23	11.9	10.9	12.6	12.4	7.2	22.3	28.9	30.6	13.9	23.5	3.5	8.8	5.1	7.4	5.2
24	14.3	10.2	11.4	14.0	3.8	22.1	25.1	18.5	19.3	14.1	11.4	5.8	6.6	8.1	5.8
25	6.3	11.0	5.7	7.0	3.2	26.7	23.3	19.2	22.9	20.0	6.2	3.6	5.7	6.9	2.5
26	2.4	2.8	7.4	4.1	2.4	19.8	20.0	16.5	14.5	20.7	8.8	6.5	6.0	2.5	3.5
27	8.6	12.4	5.1	0.9	1.7	24.1	13.1	16.6	20.6	17.5	4.4	6.2	3.1	1.8	1.3
28	5.5	2.6	1.0	2.4	0.9	27.6	22.1	20.8	18.6	13.9	3.7	7.7	6.0	4.8	4.3
29	1.3	1.8	3.5	1.2	0.1	24.0	21.8	12.6	11.9	11.3	5.0	3.7	5.1	4.4	1.0
30	0.6	0.0	1.1	1.0	1.5	28.7	15.8	10.7	12.9	7.9	10.9	4.8	8.9	3.2	1.4
31	0.0	0.6	0.0	0.8	0.2	14.3	11.7	11.3	8.2	8.9	4.5	14.3	4.8	4.0	1.4
32	0.0	0.0	0.9	0.0	0.0	17.9	12.9	10.0	5.8	6.1	2.5	3.0	7.4	5.2	3.8
33	0.0	2.3	0.7	0.0	2.1	12.5	9.9	13.3	5.6	10.0	1.9	9.2	4.5	2.0	0.3
34	0.2	0.0	1.6	0.1	0.0	12.7	14.8	8.2	8.7	6.4	1.7	2.8	1.9	1.3	1.3
35	0.0	0.4	0.0	2.1	0.0	26.6	15.8	9.5	11.3	9.0	5.0	5.0	4.3	2.3	5.9

Source: own calculations based on KIHBS 2005/06.

Appendix 1: Supporting Material

Table 4.9: Youth unemployment rate and number of unemployed by gender, area, and age

Age	Rate, percent				Thousands			
	Rural Female	Urban Female	Rural Male	Urban Male	Rural Female	Urban Female	Rural Male	Urban Male
15	24.3	60.1	19.8	16.9	16.37	4.97	15.71	0.83
16	26.8	86.6	19.9	51.8	18.82	16.87	17.33	9.20
17	35.6	58.4	13.8	62.6	34.14	16.80	14.04	10.19
18	34.2	68.3	23.5	53.9	51.48	30.61	40.37	15.89
19	32.2	65.7	25.4	58.4	46.95	35.39	40.11	15.72
20	40.9	57.1	24.7	46.9	59.24	46.82	46.47	24.64
21	29.1	58.2	14.3	50.5	45.53	39.20	26.87	27.55
22	33.3	62.2	26.0	37.2	58.36	48.71	48.78	17.94
23	32.7	51.4	17.9	29.8	61.40	41.29	28.68	25.00
24	27.9	45.9	17.0	21.1	32.03	22.17	22.28	12.33
25	28.2	57.4	15.0	18.7	44.01	50.32	27.18	16.19
26	17.2	46.5	18.4	14.0	29.49	31.00	23.90	8.34
27	22.0	36.0	12.4	23.2	35.34	25.35	17.14	18.86
28	21.0	39.4	11.6	29.8	26.86	27.83	15.96	22.88
29	19.0	32.1	10.3	14.2	23.47	17.15	13.93	9.00
30	20.3	28.2	12.4	4.6	32.67	13.69	19.36	3.75
31	10.3	35.0	6.8	10.1	10.36	13.84	8.87	5.37
32	14.8	20.3	7.0	4.0	17.61	8.72	10.11	2.61
33	12.2	24.4	5.3	9.4	16.76	9.83	5.97	5.07
34	13.8	25.4	4.8	7.5	11.46	7.79	5.45	3.16
35	10.8	45.5	8.9	8.4	14.32	25.96	9.96	4.90

Source: own calculations based on KIHBS 2005/06.

Table 4.10: Youth activities by age, area, and gender (percent share of the population)

Age	Rural Female					
	Formal	Informal	Unemployed	Student	Home-maker	Other
15	0.0	12.2	3.9	74.2	3.7	6.0
16	0.0	14.3	5.2	69.1	7.4	4.0
17	0.5	16.7	9.5	60.2	7.1	5.9
18	0.0	27.4	14.2	44.8	7.2	6.4
19	0.7	32.1	15.6	37.6	10.7	3.3
20	0.9	30.2	21.5	26.3	14.0	7.1
21	1.8	42.2	18.0	19.2	14.3	4.6
22	1.4	42.8	22.1	11.1	15.9	6.6
23	1.9	46.5	23.5	8.1	11.9	8.2
24	3.9	45.8	19.2	9.7	12.2	9.1
25	1.5	52.5	21.2	4.2	15.4	5.2
26	1.7	64.2	13.7	0.7	14.0	5.6
27	2.7	58.2	17.2	3.2	15.6	3.2
28	5.1	57.3	16.6	0.0	16.1	4.9
29	5.4	59.5	15.2	0.4	16.2	3.2
30	3.8	63.4	17.1	0.1	12.1	3.5
31	5.7	64.9	8.1	0.0	16.2	5.0
32	5.6	58.5	11.2	0.0	18.7	6.0
33	4.4	68.9	10.1	1.3	11.9	3.5
34	3.0	64.6	10.8	0.0	19.4	2.2
35	3.9	70.1	8.9	0.0	12.7	4.3

Age	Rural Male					
	Formal	Informal	Unemployed	Student	Home-maker	Other
15	0.0	14.3	3.5	74.4	2.5	5.2
16	0.0	18.5	4.6	71.1	1.2	4.6
17	0.3	25.7	4.2	63.7	0.9	5.2
18	0.1	32.0	9.9	51.5	1.3	5.2
19	1.1	33.1	11.7	46.0	0.6	7.5
20	0.7	45.2	15.1	33.9	1.3	3.8
21	2.5	54.7	9.5	27.3	1.3	4.7
22	4.3	50.7	19.3	20.9	0.0	4.8
23	3.7	62.7	14.5	13.4	1.1	4.5
24	9.2	60.4	14.3	8.9	0.2	7.1
25	5.5	66.0	12.6	8.6	0.8	6.5
26	5.8	62.4	15.3	8.8	0.0	7.7
27	6.6	70.6	11.0	7.9	0.0	4.0
28	12.9	64.8	10.2	4.6	0.3	7.2
29	10.5	71.8	9.4	2.3	0.5	5.4
30	10.1	69.3	11.2	1.5	0.8	7.1
31	8.7	77.9	6.3	0.3	0.3	6.5
32	18.9	69.4	6.6	0.0	0.4	4.7
33	13.5	75.6	5.0	1.1	0.6	4.2
34	19.3	73.9	4.7	0.0	0.3	1.7
35	12.6	70.1	8.0	0.8	0.0	8.4

Appendix 1: Supporting Material

Age	Urban Female					
	Formal	Informal	Unemployed	Student	Home-maker	Other
15	0.3	5.6	8.9	81.3	1.2	2.7
16	0.0	3.7	24.1	58.8	2.6	10.8
17	2.9	13.0	22.4	46.7	13.6	1.3
18	1.9	13.2	32.6	37.4	9.5	5.3
19	1.1	18.5	37.5	30.8	6.9	5.2
20	0.3	29.3	39.3	14.2	11.9	4.9
21	5.4	23.5	40.2	19.7	7.8	3.4
22	5.3	22.9	46.3	14.4	6.3	4.8
23	5.9	30.5	38.4	9.9	8.2	7.1
24	10.3	26.7	31.4	13.3	16.3	1.9
25	5.3	29.4	46.8	6.6	8.6	3.3
26	14.7	36.0	44.0	0.9	3.1	1.4
27	10.2	41.9	29.3	7.5	8.7	2.5
28	10.8	40.1	33.1	1.3	11.6	3.1
29	19.1	38.0	27.0	0.1	14.3	1.5
30	8.8	41.6	19.7	1.5	20.3	8.0
31	20.3	29.6	26.8	1.4	16.0	5.9
32	14.4	55.7	17.8	0.0	9.7	2.5
33	17.0	49.7	21.6	0.0	11.7	0.1
34	32.2	27.8	20.5	2.7	15.6	1.3
35	13.1	37.3	42.1	0.1	6.8	0.5

Age	Urban Male					
	Formal	Informal	Unemployed	Student	Home-maker	Other
15	0.0	5.8	1.2	91.1	0.0	2.0
16	0.2	12.4	13.5	65.6	0.2	8.1
17	0.0	9.0	15.1	73.3	0.1	2.4
18	0.5	17.0	20.6	56.9	1.2	3.8
19	0.6	18.2	26.4	50.3	1.6	3.0
20	3.0	35.2	33.8	24.4	0.0	3.6
21	4.5	29.2	34.3	25.6	0.1	6.3
22	3.9	47.7	30.6	16.3	0.2	1.3
23	14.0	44.6	24.9	13.9	0.0	2.6
24	7.9	56.8	17.3	9.5	0.0	8.5
25	22.0	53.9	17.5	5.3	0.0	1.4
26	27.9	53.7	13.3	4.6	0.0	0.5
27	26.4	48.5	22.6	1.1	0.0	1.4
28	22.0	43.3	27.8	2.6	0.8	3.6
29	36.9	45.1	13.6	3.0	0.0	1.3
30	31.9	61.4	4.5	1.2	0.0	1.1
31	32.5	56.1	10.0	0.3	0.0	1.1
32	40.7	51.9	3.9	1.1	0.2	2.2
33	29.7	57.8	9.1	1.2	0.0	2.2
34	42.8	48.8	7.5	0.1	0.0	0.8
35	25.6	63.2	8.1	1.9	0.0	1.1

Source: own calculations based on KIHBS 2005/06.

Table 4.11: Unemployment rate by gender, area, and education, percent

Age	No Formal Education				Primary Education				Secondary Education				Tertiary Education			
	Rural		Urban		Rural		Urban		Rural		Urban		Rural		Urban	
	Female	Male	Female	Male	Female	Male	Female	Male	Female	Male	Female	Male	Female	Male	Female	Male
15	55.4	32.5	59.7	0.0	15.4	16.3	59.9	19.2	0.0	0.7	54.7	0.0	0.0	0.0	0.0	0.0
16	61.0	29.4	83.3	55.6	21.6	17.5	87.9	50.7	0.0	6.6	100.0	100.0	0.0	0.0	0.0	0.0
17	52.9	25.0	27.0	100.0	31.6	13.6	59.2	27.3	31.4	5.6	60.3	83.0	0.0	0.0	0.0	0.0
18	54.6	21.1	88.0	80.0	31.2	25.8	69.3	40.7	28.2	17.2	66.9	72.4	0.0	0.0	0.0	0.0
19	29.6	39.8	59.4	68.8	33.0	24.4	59.2	47.0	34.1	24.6	76.8	76.5	0.0	0.0	0.0	0.0
20	55.5	29.9	73.7	30.4	40.8	23.4	49.5	37.4	37.3	27.5	68.9	67.0	0.0	100.0	0.0	0.0
21	46.2	20.7	28.7	62.6	29.5	10.6	39.9	33.0	26.0	22.4	83.7	66.3	0.0	0.0	0.0	0.0
22	28.8	28.4	58.1	56.2	26.1	25.6	48.6	22.0	51.2	26.5	74.4	49.9	100.0	0.0	49.7	80.5
23	53.1	6.0	71.3	51.1	27.2	15.2	52.4	14.8	37.8	24.4	52.0	51.4	0.0	100.0	0.0	0.0
24	55.9	21.3	83.7	45.2	18.7	18.9	42.5	9.9	35.6	11.1	49.0	30.3	100.0	0.0	0.0	100.0
25	50.2	15.9	56.3	20.0	22.7	13.2	61.2	18.8	25.5	18.4	50.7	18.9	100.0	0.0	90.7	16.4
26	44.0	37.6	43.9	63.9	13.3	10.4	40.1	10.9	14.4	28.9	50.5	13.8	76.7	0.0	11.2	21.0
27	39.0	28.6	97.3	40.7	23.2	15.4	41.7	27.7	12.1	2.5	30.4	17.8	0.0	63.0	0.0	57.5
28	35.5	15.2	68.7	0.0	12.1	11.0	36.1	17.6	32.6	12.7	40.4	32.9	0.0	0.0	26.5	62.6
29	25.2	18.1	35.0	79.8	16.4	11.5	37.7	23.6	21.2	7.2	29.4	8.8	44.5	0.0	0.0	0.0
30	53.3	38.7	49.1	50.2	13.3	8.8	29.6	3.2	17.5	7.8	23.9	5.1	0.0	14.8	10.4	0.0
31	38.5	24.0	84.7	75.2	11.0	3.9	51.8	16.8	0.0	5.8	20.5	5.1	0.0	100.0	0.0	0.0
32	26.4	10.1	18.3	24.1	12.4	4.2	32.0	7.4	15.6	11.0	18.8	1.2	0.0	17.8	0.0	2.8
33	31.9	1.0	23.9	0.0	10.0	6.7	39.5	1.3	8.9	4.3	12.5	15.1	0.0	0.0	0.0	0.0
34	31.1	1.8	53.3	0.0	12.5	4.3	31.0	24.2	10.7	5.7	19.1	4.7	0.0	0.0	45.2	2.6
	25.3	34.1	63.4	18.7	9.7	7.6	53.3	15.3	6.9	3.2	39.7	0.5	0.0	0.0	0.0	0.0

Source: own calculations based on KIHBS 2005/06.

Table 4.12: Number of unemployed by gender, area, and education, thousands

Age	No Formal Education				Primary Education				Secondary Education				Tertiary Education			
	Rural		Urban		Rural		Urban		Rural		Urban		Rural		Urban	
	Female	Male	Female	Male	Female	Male	Female	Male	Female	Male	Female	Male	Female	Male	Female	Male
15	7.9	8.0	1.1	0.0	7.9	7.7	3.6	0.8	0.0	0.0	0.2	0.0	0.0	0.0	0.0	0.0
16	6.4	5.0	3.6	1.2	12.4	10.9	12.1	7.9	0.0	0.4	1.3	0.2	0.0	0.0	0.0	0.0
17	9.8	2.4	0.3	3.1	19.0	11.1	13.3	1.9	5.4	0.6	3.0	4.9	0.0	0.0	0.0	0.0
18	12.4	5.7	1.4	1.8	30.1	28.4	21.8	7.1	8.6	5.4	7.3	7.0	0.0	0.0	0.0	0.0
19	3.7	4.8	1.0	0.4	28.7	26.1	19.2	7.9	14.4	8.4	15.1	6.9	0.0	0.0	0.0	0.0
20	8.5	4.2	2.3	2.1	33.7	26.6	24.9	10.0	16.4	15.3	19.4	12.4	0.0	0.1	0.0	0.0
21	6.2	2.3	0.8	1.8	25.7	13.3	13.8	7.8	13.6	11.3	24.6	17.7	0.0	0.0	0.0	0.0
22	6.1	5.1	0.9	1.5	27.9	30.3	17.4	4.9	23.6	13.2	30.3	11.4	0.5	0.0	0.2	0.1
23	7.0	0.5	5.1	0.7	32.0	14.8	17.9	7.0	20.2	12.1	18.3	17.0	0.0	1.2	0.0	0.0
24	7.1	2.7	0.7	0.2	13.3	14.7	5.6	2.5	10.7	4.2	15.8	8.2	0.9	0.0	0.0	0.1
25	10.4	2.4	2.6	0.4	22.3	13.8	27.4	6.9	8.9	11.0	18.1	8.2	2.4	0.0	1.7	0.7
26	8.1	3.7	0.5	1.0	14.2	7.9	6.7	3.1	6.4	11.9	23.5	3.9	0.8	0.0	0.2	0.4
27	5.1	2.9	2.1	0.3	25.7	12.3	12.5	8.8	4.4	1.2	10.8	8.2	0.0	0.7	0.0	1.5
28	5.9	1.3	0.8	0.0	8.6	10.1	8.3	3.8	12.3	4.5	17.7	16.7	0.0	0.0	0.5	2.3
29	3.6	0.8	0.4	0.5	11.6	9.5	7.3	5.1	7.8	3.4	9.5	3.5	0.5	0.0	0.0	0.0
30	13.4	7.2	2.7	0.5	13.0	7.6	5.8	1.1	6.2	3.8	4.9	2.2	0.0	0.4	0.2	0.0
31	3.7	2.5	1.6	0.4	6.7	2.8	7.3	3.4	0.0	2.7	4.2	1.5	0.0	0.9	0.0	0.0
32	4.4	0.7	0.6	0.2	9.3	3.7	2.6	1.9	3.9	4.9	5.5	0.4	0.0	0.8	0.0	0.1
33	3.6	0.1	0.4	0.0	8.1	4.4	6.9	0.2	3.7	1.4	2.5	4.9	0.0	0.0	0.0	0.0
34	2.8	0.1	1.2	0.0	6.6	2.8	3.2	1.8	2.1	2.1	2.9	1.2	0.0	0.0	0.4	0.2
	4.2	4.1	1.1	0.4	7.5	4.6	15.3	4.4	2.6	1.2	9.4	0.1	0.0	0.0	0.0	0.0

Source: own calculations based on KIHBS 2005/06.

Table 4.13: Employment and unemployment by age, area, gender, and education (percent share of the population)

Age	Formal Employment											
	No Formal Education				Primary Education				Secondary Education			
	Rural		Urban		Rural		Urban		Rural		Urban	
	Female	Male	Female	Male	Female	Male	Female	Male	Female	Male	Female	Male
15	-	-	-	-	0.0	0.0	0.0	0.0	0.0	0.0	1.6	0.0
16	-	-	-	-	0.0	0.0	0.0	0.3	0.0	0.0	0.0	0.0
17	-	-	-	-	0.8	0.4	5.0	0.0	0.0	0.0	0.0	0.0
18	-	-	-	-	0.0	0.0	0.0	1.4	0.0	0.5	4.3	0.0
19	-	-	-	-	1.2	1.4	2.4	1.3	0.0	0.9	0.0	0.0
20	-	-	-	-	1.4	0.0	0.1	4.3	0.3	1.6	0.6	2.6
21	-	-	-	-	0.4	1.1	7.8	3.1	1.8	4.3	4.4	6.3
22	-	-	-	-	1.5	3.5	5.8	1.6	2.0	5.1	4.9	6.9
23	-	-	-	-	2.8	4.8	0.0	7.8	1.0	3.1	7.4	23.6
24	-	-	-	-	2.9	8.3	8.1	7.3	7.9	13.6	8.8	11.4
25	-	-	-	-	0.0	3.9	1.8	6.9	4.8	8.1	10.9	31.0
26	-	-	-	-	1.0	6.0	0.0	21.9	2.5	6.8	18.8	34.7
27	-	-	-	-	2.5	2.6	1.0	22.9	5.0	15.4	13.9	29.6
28	-	-	-	-	0.8	8.9	2.5	14.7	9.0	23.5	13.7	25.3
29	-	-	-	-	3.0	8.6	8.4	11.2	12.4	14.5	24.5	51.4
30	-	-	-	-	2.1	10.3	0.0	15.4	11.7	11.9	14.8	46.5
31	-	-	-	-	1.3	6.7	4.8	26.2	12.8	13.4	35.2	34.4
32	-	-	-	-	2.1	17.1	12.3	21.2	14.6	22.8	14.9	53.0
33	-	-	-	-	3.8	7.4	1.4	19.3	7.5	25.3	29.8	26.4
34	-	-	-	-	0.3	9.8	27.3	15.8	4.7	39.7	33.1	34.5
	-	-	-	-	1.1	6.7	0.0	11.7	13.5	23.3	20.0	38.3

Age	Informal Employment											
	No Formal Education				Primary Education				Secondary Education			
	Rural		Urban		Rural		Urban		Rural		Urban	
	Female	Male	Female	Male	Female	Male	Female	Male	Female	Male	Female	Male
15	11.8	5.8	10.4	5.4	4.2	0.0	26.5	0.0	28.1	40.3	55.4	87.3
16	15.5	4.3	16.9	15.5	2.0	0.0	14.3	0.0	21.3	16.7	57.8	34.5
17	15.6	15.8	26.2	17.9	15.2	7.7	16.8	2.9	31.9	16.2	55.7	0.0
18	30.0	18.9	30.7	33.6	20.7	5.2	25.1	6.3	33.7	9.7	63.7	16.0
19	34.4	29.7	37.6	33.0	25.3	9.5	23.1	6.7	39.2	17.6	42.3	20.8
20	31.4	40.8	51.0	50.7	29.9	17.8	33.9	15.5	24.2	13.5	58.4	67.4
21	45.8	45.8	67.1	51.2	41.3	5.2	34.8	14.5	29.6	61.1	67.6	34.7
22	50.9	33.9	59.2	65.9	26.6	16.1	38.2	35.0	54.8	12.8	62.2	43.8
23	54.6	39.5	72.7	76.4	41.5	29.8	49.3	15.7	26.3	25.3	88.6	48.9
24	55.6	23.9	63.6	80.5	34.3	32.6	57.1	46.3	31.9	5.3	70.5	38.9
25	62.2	31.6	71.8	72.8	50.0	31.3	58.6	45.8	30.1	23.5	77.4	68.4
26	67.4	54.6	75.2	64.9	76.9	29.5	50.2	44.8	32.0	36.5	62.4	35.1
27	60.1	46.0	75.8	48.8	64.6	47.3	70.3	52.2	36.3	2.5	67.8	36.8
28	71.2	52.3	73.9	63.3	48.7	37.5	44.9	39.4	37.5	14.2	75.2	7.9
29	61.8	44.9	72.5	61.6	61.2	34.5	75.2	36.8	47.6	53.3	57.4	20.2
30	76.5	52.3	75.6	80.7	58.3	36.7	76.1	45.2	30.6	38.7	48.8	41.8
31	72.0	26.8	84.1	55.4	65.0	41.2	74.7	60.5	34.4	11.5	64.1	24.8
32	68.5	40.5	76.6	65.9	49.7	62.6	60.8	45.8	44.9	53.3	72.7	67.3
33	74.1	49.6	82.2	76.6	71.5	51.3	60.7	56.2	40.7	71.9	97.9	100.0
34	66.9	36.0	82.6	60.0	73.8	25.8	54.6	60.4	46.3	37.2	98.2	38.0
	74.7	44.4	80.6	72.8	77.4	34.6	64.1	60.2	50.3	8.5	53.5	75.8

Source: own calculations based on KIHBS 2005/06.

Table 4.13: Employment and unemployment by age, area, gender, and education (contd.)

Age	Unemployed											
	No Formal Education				Primary Education				Secondary Education			
	Rural		Urban		Rural		Urban		Rural		Urban	
	Female	Male	Female	Male	Female	Male	Female	Male	Female	Male	Female	Male
15	2.1	8.6	2.0	1.3	0.0	1.9	0.2	0.0	34.9	59.7	26.7	0.0
16	4.3	31.4	3.6	16.2	0.0	5.0	1.0	1.0	33.3	83.3	24.1	43.3
17	7.6	30.1	4.2	6.7	6.9	11.6	1.0	14.1	35.9	6.0	18.6	95.4
18	13.6	42.8	10.6	24.0	8.1	19.3	5.3	16.4	40.8	71.5	17.0	64.0
19	17.5	46.7	12.6	30.4	13.1	31.5	7.8	21.8	16.5	25.7	28.0	45.8
20	22.7	40.2	15.6	32.8	18.0	40.6	13.5	36.7	30.1	37.7	25.9	29.5
21	19.3	35.5	8.1	26.7	15.2	49.2	11.3	40.9	28.9	24.6	17.7	58.2
22	18.5	37.6	21.6	19.0	29.9	60.9	15.6	41.7	22.2	52.1	25.5	56.2
23	21.4	43.5	13.9	14.6	25.8	40.3	16.9	41.5	29.8	62.9	5.7	51.1
24	13.5	23.7	16.8	9.7	23.4	39.8	8.8	25.2	40.4	27.1	20.2	32.1
25	18.3	52.5	11.5	18.5	18.8	43.3	15.1	17.9	32.7	31.3	14.6	20.0
26	10.5	36.5	9.4	10.6	13.3	49.2	23.1	12.7	28.0	28.6	37.6	62.1
27	18.9	33.6	14.3	27.5	9.5	26.6	2.2	17.8	23.2	89.8	27.1	25.2
28	9.9	30.9	10.3	16.6	27.9	34.8	9.9	31.8	23.1	31.3	13.4	0.0
29	12.8	32.3	10.6	22.4	19.8	24.6	7.0	8.5	17.2	28.7	13.5	79.8
30	12.0	22.0	8.3	3.2	14.9	16.2	7.5	5.0	34.9	37.4	30.8	42.1
31	9.1	34.0	3.7	16.5	0.0	19.6	5.4	5.1	24.2	64.0	21.9	75.2
32	10.0	24.8	4.1	7.0	11.9	17.9	10.3	1.2	16.1	12.0	8.2	24.1
33	8.6	33.3	6.5	1.3	7.7	11.6	3.8	14.7	19.0	23.9	1.0	0.0
34	9.6	28.3	4.2	24.2	9.4	13.9	5.7	4.6	20.9	42.5	1.8	0.0
	8.1	50.7	7.1	15.3	6.7	35.9	2.9	0.5	17.1	47.6	27.7	17.4

Source: own calculations based on KIHBS 2005/06.

Appendix 1: Supporting Material

Table 5.1: Employment for pay or wage and area of residence

Wage	Thousands			Percent		
	Rural	Urban	Total	Rural	Urban	Total
Unpaid	5,578,043	543,951	6,121,994	67.0	23.7	57.6
Male	2,567,411	261,139	2,828,550	30.8	11.4	26.6
Adult	1,155,758	113,704	1,269,462	13.9	5.0	12.0
Young	1,411,653	147,435	1,559,088	17.0	6.4	14.7
Female	3,010,632	282,811	3,293,444	36.2	12.3	31.0
Adult	1,542,451	127,617	1,670,067	18.5	5.6	15.7
Young	1,468,182	155,195	1,623,376	17.6	6.8	15.3
Paid	2,749,080	1,749,836	4,498,916	33.0	76.3	42.4
Male	1,782,694	1,135,745	2,918,439	21.4	49.5	27.5
Adult	809,376	481,336	1,290,712	9.7	21.0	12.2
Young	973,318	654,409	1,627,727	11.7	28.5	15.3
Female	966,386	614,092	1,580,477	11.6	26.8	14.9
Adult	457,852	215,013	672,864	5.5	9.4	6.3
Young	508,534	399,079	907,613	6.1	17.4	8.5
All	8,327,123	2,293,787	10,620,910	100.0	100.0	100.0

Source: own calculations based on UN Population estimates.

Note: the smooth is spline with 7 degrees of freedom.

Table 5.2: Youth employment by job status, payment condition, and area (number)

Wage	Rural youth		Urban youth		All youth		All youth All
	No wage	Wage	No wage	Wage	No wage	Wage	
Employee	151,953	1,886,243	34,597	1,394,001	186,550	3,280,244	3,466,795
Working owner	53,927	47,987	39,248	58,220	93,175	106,207	199,383
Own account	2,689,788	576,389	369,746	268,225	3,059,534	844,614	3,904,148
Unpaid family	2,647,566	213,387	95,780	16,242	2,743,346	229,628	2,972,974
Apprentice	5,864	2,377	1,124	3,157	6,988	5,534	12,522
Other	28,945	22,697	28,945	9,991	57,889	32,688	90,578
SUM	5,578,043	2,749,080	569,439	1,749,837	6,147,483	4,498,916	10,646,399

Source: own calculations based on KIHBS (2005/6) micro records.

Appendix 1: Supporting Material

Table 5.3: Employees by sector and area; number (thousands)*

Occupation	Rural	Urban	Total	Smooth
Informal employee	1,155,305	679,871	1,835,177	40,329
Informal other	322,973	121,612	444,586	67,863
Private employee	328,309	421,125	749,434	94,881
Public employee	310,160	249,395	559,555	119,794
All	2,116,748	1,472,004	3,588,751	139,341

Source: own calculations based on KIHBS 2005/06.

* People working for a pay and actually receiving a monetary payment and working at least one hour.

Table 5.4: People working for pay by job status, area, and age (percent)*

Job Status	Urban		Rural	
	Youth	Adult	Youth	Adult
Informal employee	23.7	12.1	35.1	27.8
Informal other	3.4	3.9	8.2	10.4
Private employee	13.0	9.9	9.5	8.5
Public employee	3.4	11.9	3.8	15.5
All	43.4	37.8	56.6	62.2

Source: own calculations based on KIHBS 2005/06.

* People working for a pay and actually receiving a monetary payment and working at least one hour.

Table 5.5: Youth employees job status, age group, and area (number)

Job Status	Rural (thousands)					Urban (thousands)				
	15-19	20-24	25-29	30-34	35-64	15-19	20-24	25-29	30-34	35-64
Informal employee	141.45	225.31	202.29	174.19	412.07	48.75	176.47	155.59	119.96	179.09
Informal other	19.95	38.97	55.55	58.62	153.76	2.65	17.16	31.98	20.26	58.05
Private employee	9.38	48.51	65.09	78.45	126.88	5.59	47.31	116.14	105.40	146.69
Public employee	0.00	12.02	27.03	40.50	230.61	0.51	4.30	28.41	38.98	177.20

Source: own calculations based on KIHBS 2005/06.

Appendix 1: Supporting Material

Table 5.6: Wages by age and area (KSh, thousands)

Age group	Rural		Urban		Age group	Rural		Urban	
	Actual	Smooth	Actual	Smooth		Actual	Smooth	Actual	Smooth
15	1.10	1.24	2.33	2.86	40	7.07	8.15	22.27	23.29
16	1.68	1.47	4.61	3.07	41	7.76	8.11	26.90	23.56
17	1.92	1.68	3.64	3.28	42	6.56	8.10	15.98	23.76
18	1.75	1.90	4.19	3.50	43	7.61	8.15	22.94	23.92
19	1.99	2.13	2.62	3.77	44	6.51	8.29	35.83	23.95
20	2.37	2.36	3.06	4.14	45	8.73	8.52	22.07	23.77
21	2.45	2.60	3.95	4.62	46	8.88	8.78	18.68	23.48
22	2.77	2.85	5.01	5.21	47	9.49	9.05	14.60	23.17
23	3.33	3.10	6.26	5.89	48	9.92	9.28	38.03	22.83
24	3.21	3.36	7.00	6.64	49	10.30	9.45	18.93	22.34
25	4.03	3.62	9.13	7.45	50	7.14	9.55	20.41	21.76
26	3.67	3.89	7.58	8.31	51	7.10	9.57	22.83	21.20
27	3.72	4.15	8.47	9.24	52	15.92	9.48	25.86	20.69
28	5.56	4.43	11.70	10.26	53	7.84	9.18	16.85	20.34
29	4.69	4.70	10.37	11.38	54	9.33	8.70	24.38	20.32
30	4.74	5.00	12.13	12.62	55	10.20	8.07	15.12	20.77
31	4.79	5.33	11.81	13.98	56	9.11	7.31	19.16	21.89
32	5.29	5.71	12.75	15.46	57	3.15	6.52	9.91	23.76
33	4.48	6.13	19.43	16.99	58	2.17	5.79	27.09	26.35
34	8.39	6.59	17.44	18.48	59	5.27	5.18	56.20	29.40
35	6.07	7.04	20.73	19.83	60	5.82	4.65	4.13	32.70
36	6.27	7.45	25.69	20.97	61	4.79	4.17	39.57	36.38
37	8.85	7.81	22.37	21.84	62	1.99	3.72	17.71	40.22
38	10.91	8.06	23.13	22.48	63	5.45	3.28	116.30	43.74
39	10.19	8.16	20.65	22.94	64	2.34	2.85	7.82	46.78

Source: own calculations based on KIHBS 2005/06.

Table 5.7: Wages by age, job status and area (KSh, thousands)

Age	Informal employee		Informal other		Private employee		Public employee	
	Rural	Urban	Rural	Urban	Rural	Urban	Rural	Urban
15	1.13	1.66	0.81	0.00	6.00	0.00	0.00	14.90
16	1.64	4.71	2.22	0.30	0.00	1.00	0.00	0.00
17	1.93	3.71	1.12	0.00	2.68	3.35	0.00	0.00
18	1.77	3.76	1.54	2.93	3.08	5.94	0.00	21.34
19	1.85	2.43	1.52	2.61	3.46	4.28	0.00	0.00
20	2.43	2.86	1.42	2.64	1.46	6.07	3.38	0.00
21	2.34	2.75	1.71	4.95	3.47	6.96	3.79	6.34
22	2.31	4.72	3.46	1.86	3.68	7.33	3.69	6.49
23	2.95	4.68	3.67	3.73	4.40	8.83	0.00	18.50
24	2.62	5.30	2.83	5.59	4.24	11.70	6.05	13.40
25	2.39	5.72	4.54	7.40	3.79	15.79	30.45	12.83
26	2.84	5.06	3.30	7.69	6.66	8.70	6.57	16.34
27	3.08	5.33	3.49	3.17	6.45	12.42	5.32	12.64
28	3.21	7.21	3.14	8.37	6.21	17.94	18.13	15.61
29	3.44	5.08	3.53	9.90	4.70	14.63	13.26	12.51
30	3.24	5.35	3.58	7.03	4.76	21.13	13.97	13.54
31	3.14	5.24	3.65	49.39	6.95	9.98	13.05	28.97
32	2.47	6.30	3.25	9.49	4.76	18.85	14.39	17.82
33	2.80	8.75	1.82	6.59	6.35	37.39	15.89	21.11
34	4.61	7.70	4.13	5.72	9.35	26.53	30.03	17.14
35	3.32	7.57	4.18	14.88	11.14	51.66	16.90	24.09

Source: own calculations based on KIHBS 2005/06.

Table 5.8: Youth wages by, age, job status and gender (KSh, thousands)

Age	Informal employee		Informal other		Private employee		Public employee	
	Female	Male	Female	Male	Female	Male	Female	Male
15	1.81	1.08	1.50	0.63	0.00	6.00	14.90	0.00
16	1.25	2.93	1.20	2.22	0.00	1.00	0.00	0.00
17	1.80	2.74	1.50	0.21	3.01	2.80	0.00	0.00
18	1.97	2.60	2.02	1.66	5.95	3.91	34.00	2.40
19	1.67	2.17	2.05	1.16	3.59	3.63	0.00	0.00
20	2.19	2.89	1.30	2.42	1.71	5.72	0.00	3.38
21	1.97	2.77	2.70	3.49	6.07	4.57	3.19	4.68
22	2.74	3.91	1.61	3.51	6.53	3.89	2.57	4.63
23	2.86	4.21	3.35	4.24	9.56	5.52	23.31	18.13
24	3.84	3.79	2.41	5.08	10.52	4.90	13.40	6.05
25	2.24	4.91	4.38	6.67	11.99	11.36	10.86	21.80
26	2.56	4.52	3.48	5.75	10.54	7.13	13.08	13.18
27	3.04	4.59	2.22	4.69	21.58	7.22	3.34	11.35
28	2.17	5.82	4.37	7.00	19.25	9.11	22.43	15.07
29	3.50	4.67	4.59	5.07	10.90	10.55	13.95	11.83
30	3.13	4.72	3.82	5.17	22.29	13.60	12.73	14.74
31	2.49	4.38	2.47	14.23	6.59	10.36	34.43	15.58
32	4.20	4.23	2.78	5.16	21.92	10.48	9.01	19.11
33	2.21	6.28	4.43	2.60	13.35	27.53	19.70	18.02
34	5.07	5.74	2.21	5.74	25.78	16.95	16.77	29.95
35	4.60	5.22	2.67	10.60	50.15	26.04	19.15	22.14

Source: own calculations based on KIHBS 2005/06.

Table 5.9: Wages by type of employment, age, and gender (KSh, thousands)

Type of Employment	Adult		Youth	
	Female	Male	Female	Male
Central Government	20.17	19.81	14.27	13.80
Control Government	31.46	38.69	25.29	22.84
Individual	2.48	5.43	2.55	4.22
Intl Organiozations	171.41	32.23	26.29	66.02
Local Government	15.89	15.96	10.41	18.97
Non-Governmental Org.	19.25	64.46	25.58	12.21
Other	5.42	8.17	3.39	4.46
Private	20.49	22.31	10.38	10.28
State Owned Enterprises	24.04	22.00	8.47	12.28
Teachers Service C.	17.92	20.99	17.72	19.85

Source: own calculations based on KIHBS 2005/06.

Table 5.10: Youth wages by age, status, and education (KSh, thousands)

Age	Private employee				Public employee			
	No Education	Primary	Secondary	Tertiary	No Educ	Primary	Secondary	Tertiary
15	0.00	6.00	0.00	0.00	0.00	0.00	14.90	0.00
16	0.00	1.00	0.00	0.00	0.00	0.00	0.00	0.00
17	0.00	2.96	0.00	0.00	0.00	0.00	0.00	0.00
18	4.00	5.57	5.28	0.00	0.00	2.40	0.00	34.00
19	0.00	3.44	4.76	0.00	0.00	0.00	0.00	0.00
20	5.00	2.44	6.36	0.00	0.00	0.00	3.38	0.00
21	0.00	4.50	6.73	3.00	2.74	0.00	4.71	0.00
22	3.03	4.43	5.81	0.00	0.00	3.18	5.07	5.00
23	0.00	3.96	6.34	22.82	0.00	6.00	17.55	0.00
24	3.84	4.29	8.13	27.33	0.00	2.80	7.11	0.00
25	1.86	6.02	9.73	40.31	0.00	3.88	19.52	52.00
26	1.50	5.57	9.43	15.31	0.00	1.63	14.22	25.10
27	0.00	5.42	8.14	52.18	0.00	2.54	11.74	11.78
28	0.00	4.94	9.17	98.12	2.60	14.93	11.53	43.72
29	1.50	4.12	11.76	47.27	2.10	11.58	12.97	16.87
30	0.00	4.87	17.87	41.75	0.00	9.68	12.74	25.47
31	0.00	4.93	6.79	36.25	14.21	39.54	12.84	50.24
32	0.00	4.35	11.72	65.41	0.00	7.43	13.54	36.09
33	0.00	6.47	21.89	78.22	0.00	3.98	15.03	32.58
34	0.00	5.68	9.91	48.50	0.00	5.80	19.29	50.19
35	6.00	9.80	22.39	181.78	0.00	12.16	15.71	43.80

Appendix 1: Supporting Material

Age	Informal employee				Informal other			
	No Educ	Primary	Secondary	Tertiary	No Educ	Primary	Secondary	Tertiary
15	1.12	1.34	0.00	0.00	0.70	0.00	1.00	0.00
16	1.85	2.67	0.00	0.00	0.60	3.21	0.00	0.00
17	1.41	2.66	1.65	0.00	1.50	0.60	0.07	0.00
18	1.10	1.94	4.44	0.00	0.55	2.12	1.92	0.00
19	1.51	1.97	2.44	0.00	0.00	1.46	2.43	0.00
20	1.50	2.52	3.17	0.00	0.00	1.99	1.87	0.00
21	1.47	2.39	3.41	0.00	0.84	2.82	3.57	0.00
22	2.24	3.31	4.18	6.00	1.16	4.09	3.17	0.00
23	1.48	3.83	4.04	5.14	9.39	2.92	3.93	0.00
24	1.73	3.21	5.12	0.00	2.49	3.44	4.17	0.00
25	3.09	3.30	5.30	6.93	1.25	5.14	10.79	15.00
26	2.97	3.23	5.17	5.84	1.37	3.22	6.17	5.00
27	2.43	3.11	5.02	5.51	1.84	2.83	5.30	0.00
28	2.19	3.62	7.01	0.00	2.45	3.64	9.97	0.00
29	0.25	3.00	6.05	1.40	1.50	2.65	10.29	0.00
30	2.34	3.23	5.98	30.47	2.53	4.47	4.74	80.00
31	0.97	2.64	6.11	18.60	3.32	3.11	21.82	0.00
32	2.99	3.02	6.96	5.00	2.35	3.77	4.44	75.00
33	9.37	2.49	7.51	42.20	2.94	1.84	7.12	0.00
34	3.65	2.98	12.09	25.00	1.48	2.08	5.26	15.00
35	3.46	3.66	7.13	37.71	2.90	3.73	12.09	0.00

Source: own calculations based on KIHBS 2005/06.

Appendix 1: Supporting Material

Table 6.1: Household enterprises by age and area (number and percent)

Age group	Rural			Urban			Total		
	Number of Records	Enterprises		Number of Records	Enterprises		Number of Records	Enterprises	
		Number	Percent		Number	Percent		Number	Percent
15-19	15	8,184	0.7	31	7,362	1.1	46	15,545	0.9
20-24	96	55,916	4.9	163	57,439	8.7	259	113,355	6.3
25-29	184	126,452	11.1	326	113,826	17.3	510	240,278	13.4
30-34	275	174,996	15.4	324	123,254	18.7	599	298,250	16.6
35-64	1,182	773,580	67.9	966	357,534	54.2	2,148	1,131,115	62.9
Youth	570	365,548	32.1	844	301,880	45.8	1,414	667,428	37.1
Adult	1,182	773,580	67.9	966	357,534	54.2	2,148	1,131,115	62.9
All	1,752	1,139,129	100.0	1,810	659,415	100.0	3,562	1,798,543	100.0

Source: own calculations based on KIHBS 2005/06 micro records.

Table 6.2: Household enterprises by age in years of owner and area (percent)

Age	Number of records		Number of Enterprises	
	Rural	Urban	Rural	Urban
15	2	2	832	789
16	1	3	846	487
17	2	4	1,430	593
18	4	7	2,158	1,499
19	6	15	2,918	3,994
20	9	24	3,411	9,412
21	14	28	8,811	8,621
22	25	30	14,558	6,736
23	20	35	12,924	14,634
24	28	46	16,211	18,035
25	24	68	19,223	24,229
26	32	57	23,296	13,009
27	44	77	25,678	30,776
28	41	64	26,156	22,357
29	43	60	32,099	23,455
30	50	90	35,213	37,376
31	52	50	30,151	18,675
32	67	68	43,398	28,254
33	59	55	39,162	17,962
34	47	61	27,072	20,987

Appendix 1: Supporting Material

Age	Number of records		Number of Enterprises	
	Rural	Urban	Rural	Urban
35	59	66	40,145	17,433
36	55	59	32,832	21,185
37	65	63	47,655	23,252
38	52	62	37,033	31,170
39	34	42	24,916	15,709
40	50	58	27,100	18,387
41	54	43	36,533	8,711
42	68	55	45,117	16,172
43	42	36	22,207	14,995
44	49	27	31,952	12,938
45	57	50	36,111	24,935
46	43	39	31,363	16,160
47	56	37	36,934	10,465
48	34	33	19,758	15,298
49	35	24	25,900	8,825
50	48	24	31,930	6,187
51	36	22	25,667	7,102
52	35	24	22,008	6,477
53	41	23	25,984	7,897
54	21	15	14,203	5,367
55	35	24	22,999	6,218
56	30	25	19,654	15,825
57	35	21	21,449	11,116
58	24	13	13,112	4,270
59	22	20	18,587	10,090
60	28	22	13,156	12,271
61	16	7	9,934	1,008
62	18	15	10,290	5,740
63	24	8	18,138	1,223
64	16	9	10,914	1,108

Source: Own construction based on KIHBS 2005/06.

Note: Data smoothed with a spline with 8 degrees of freedom.

Appendix 1: Supporting Material

Table 6.3: Household enterprises by sector, area, and age of owner (number and percent)

Sector	Rural					
	Number			Percent		
	Youth	Adult	All	Youth	Adult	All
Agriculture	19,740	64,616	84,356	5.6	8.8	7.8
Extractives	2,907	9,035	11,942	0.8	1.2	1.1
Food manufacture	5,809	24,796	30,605	1.7	3.4	2.8
Light manufacture	20,690	50,995	71,685	5.9	7.0	6.6
Heavy manufacture	3,044	9,516	12,560	0.9	1.3	1.2
Services	298,411	574,364	872,775	85.1	78.3	80.5
All	350,601	733,322	1,083,923	100	100	100
Sector	Urban					
	Number			Percent		
	Youth	Adult	All	Youth	Adult	All
Agriculture	2,321	11,774	2,321	11.774	2,321	11.774
Extractives	2,378	12,107	2,435	12.050	2,402	12.083
Food manufacture	2,436	12,449	2,554	12.332	2,503	12.382
Light manufacture	2,496	12,801	2,679	12.618	2,626	12.671
Heavy manufacture	2,557	13,163	2,811	12.910	2,773	12.948
Services	2,620	13,536	2,948	13.207	2,948	13.208
All	2,684	13,929	3,093	13.521	3,154	13.459
Sector	All					
	Number			Percent		
	Youth	Adult	All	Youth	Adult	All
Agriculture	3,103	16,551	4,121	15.533	4,733	14.921
Extractives	3,180	17,035	4,323	15.891	5,065	15.150
Food manufacture	3,257	17,533	4,535	16.256	5,419	15.371
Light manufacture	3,337	18,046	4,757	16.626	5,799	15.585
Heavy manufacture	3,419	18,570	4,990	16.999	6,205	15.785
Services	3,503	19,110	5,235	17.378	6,639	15.974
All	3,589	19,665	5,491	17.762	7,104	16.150

Source: own calculations based on KIHBS 2005/06.

Appendix 1: Supporting Material

Table 6.4: Household enterprises by detailed sector and area (number and percent)

Code	Rural			
	Sector	Detailed sector	Number	% in total area
1212	Agriculture	charcoal burning forest	41,683	3.8
3116	Food	grain milling	12,227	1.1
3215	Light manufacture	manufacture cordage rope	30,924	2.9
3320	Light manufacture	manufacture furniture	16,180	1.5
6111	Services	retail agric produce	28,538	2.6
6211	Services	retail food, drinks	179,963	16.6
6212	Services	retail butcheries	17,178	1.6
6214	Services	retail clothing, furniture	43,691	4.0
6217	Services	retail general trade	148,719	13.7
6310	Services	restaurants, cafes	46,754	4.3
7113	Services	transport land psng other	14,759	1.4
9519	Services	repair shops other	23,780	2.2
9591	Services	beauty and barber	13,349	1.2
6217/8	Services	retail general trade	244,067	22.5
Total			861,810	79.5

Code	Urban			
	Sector	Detailed sector	Number	% in total area
3111	Food	slaughtering, prep/presrv	9,418	1.5
6110	Services	retail food, drinks	10,430	1.7
6111	Services	retail agric produce	9,757	1.6
6113	Services	retail-repairs cloth/furniture	11,232	1.8
6211	Services	retail food, drinks	115,775	19.0
6212	Services	retail butcheries	9,472	1.6
6214	Services	retail clothing, furniture	62,509	10.3
6217	Services	retail general trade	55,270	9.1
6218	Services	retail general trade	107,885	17.7
6310	Services	restaurants, cafes	17,898	2.9
7113	Services	transport land psng other	6,595	1.1
9519	Services	repair shops other	6,205	1.0
9591	Services	beauty and barber	32,371	5.3
6217/8	Services	retail general trade	244,067	22.5
Total			454,819	74.7

Source: own calculations based on KIHBS 2005/06.

Note: Sector at 4 digits accounting for more than one per cent of the enterprises in rural and urban areas.

Table 6.5: Household enterprises by location, area, and age of owner (number)

Year	Age group	Inside home	Outside home	Jua kali	Local market	Commercial	Roadside	Other fix	Mobile	Kiosks	Other	All
1955	15-19	1,560	339	NA	1,345	2,445	1,196	1,093	206	NA	NA	8,184
1960	20-24	14,980	10,113	595	10,027	8,128	4,136	1,435	4,333	896	1,274	55,916
1965	25-29	24,176	12,586	2,115	33,026	14,581	12,378	1,582	18,362	4,454	2,445	125,704
1970	30-34	25,385	21,448	2,235	44,487	21,125	17,245	10,232	25,777	1,914	5,149	174,996
1975	35-64	143,763	114,800	8,498	206,312	83,165	81,931	19,935	81,552	15,549	12,325	767,830
1980	15-19	798	1,474	646	121	887	1,202	NA	1,993	NA	241	7,362
1985	20-24	1,409	5,469	835	10,624	6,222	11,115	12,771	5,928	371	2,693	57,439
1990	25-29	13,650	14,424	5,065	13,162	22,989	20,946	5,579	7,868	4,998	4,728	113,410
1995	30-34	20,466	19,699	1,898	10,462	15,292	22,871	8,544	20,336	94	3,592	123,254
2000	35-64	41,610	54,611	16,266	51,203	64,458	44,760	23,071	36,315	14,671	8,683	355,648
2005	15-19	2,358	1,813	NA	1,465	3,332	2,398	NA	2,199	NA	NA	NA
2010	20-24	16,389	15,582	1,430	20,651	14,350	15,251	14,206	10,260	1,267	3,967	113,355
2015	25-29	37,826	27,010	7,180	46,189	37,570	33,324	7,161	26,230	9,452	7,173	239,114
2020	30-34	45,850	41,147	4,133	54,949	36,417	40,117	18,776	46,113	2,007	8,741	298,250
2025	35-64	185,373	169,411	24,764	257,515	147,623	126,691	43,006	117,867	30,221	21,008	1,123,479
2030	TOTAL	287,796	254,962	NA	380,770	239,292	217,780	NA	202,670	NA	NA	NA

Source: own construction based on KIHBS 2005/06.

Table 6.6: Sales and profits of household enterprises by location and area (number and KSh, thousands)

Location	Rural						Urban					
	Number of Enterprises	Sum of Sales	Average Sales	Number of Enterprises	Sum of Profits	Average Profits	Number of Enterprises	Sum of Sales	Average Sales	Number of Enterprises	Sum of Profits	Average Profits
Home in	203,998	1,912,099	9.4	180,812	2,216,443	12.3	70,831	2,542,563	36	52,679	2,809,263	53.3
Home out	152,427	2,215,176	14.5	139,608	3,488,085	25.0	86,665	3,425,346	40	52,686	3,267,567	62.0
Jua kali	13,442	136,518	10.2	10,949	229,580	21.0	23,398	2,116,483	90	17,322	3,214,785	185.6
Local market	282,895	20,146,748	71.2	257,490	6,309,551	24.5	80,633	7,734,608	96	63,254	6,302,870	99.6
Commercial	124,597	6,664,039	53.5	107,757	6,975,700	64.7	102,041	57,619,659	565	70,456	43,089,942	611.6
Roadside	109,379	2,634,517	24.1	94,329	1,652,591	17.5	91,321	3,900,878	43	69,493	4,222,330	60.8
Other fix	32,584	1,408,880	43.2	32,326	1,013,600	31.4	45,716	32,537,683	712	34,789	22,823,120	656.0
Mobile	125,139	3,331,302	26.6	113,051	4,102,040	36.3	71,431	11,853,398	166	41,721	11,925,048	285.8
Kiosks	22,069	542,260	24.6	14,893	221,990	14.9	17,627	733,240	42	6,513	602,600	92.5
Other	18,052	287,100	15.9	16,134	685,850	42.5	16,815	23,620,500	1,405	14,267	930,622	65.2

Source: own construction based on KIHBS 2005/06.

Table 6.7: Average enterprise sales by age group and area (number and KSh, thousands)

Year	Rural						Urban					
	Number of Enterprises	Sum of Sales	Average Sales	Number of Enterprises	Sum of Profits	Average Profits	Number of Enterprises	Sum of Sales	Average Sales	Number of Enterprises	Sum of Profits	Average Profits
15-19	7,332	102,930	14.0	6,697	357,900	53.4	6,801	333,674	49.1	6,561	407,400	62.1
20-24	55,302	910,234	16.5	49,545	1,061,420	21.4	50,839	2,778,709	54.7	38,784	2,032,545	52.4
25-29	120,710	1,900,912	15.7	109,728	1,671,997	15.2	105,270	8,744,074	83.1	85,403	6,759,960	79.2
30-34	164,206	16,070,169	97.9	150,496	4,809,970	32.0	112,363	16,295,937	145.0	76,565	21,895,472	286.0
35-64	737,033	20,294,394	27.5	650,883	18,994,143	29.2	331,389	117,937,964	355.9	216,049	68,095,770	315.2

Source: own construction based on KIHBS 2005/06.

Appendix 1: Supporting Material

Table 6.8: Average enterprise sales by age in years and area (number)

Year	Average enterprise sales				Number of enterprises		Records in data	
	Rural		Urban		Rural	Urban	Rural	Urban
	Average	Smooth	Average	Smooth				
15	6	17	11	42	339	487	1	3
16	5	28	120	47	1430	417	2	3
17	8	32	58	51	2158	1258	4	6
18	120	35	71	55	2770	3755	5	13
19	56	36	35	58	1704	7007	6	19
20	19	34	72	62	7822	6977	12	26
21	27	31	42	68	13748	6112	23	26
22	20	27	73	76	11491	6680	17	27
23	15	24	45	87	14780	12007	25	39
24	11	22	60	101	17228	18883	21	48
25	19	21	223	116	21090	7528	29	44
26	16	20	57	132	19637	22711	36	60
27	14	21	98	149	24986	14513	39	51
28	16	23	56	165	26786	21767	36	51
29	19	25	598	178	29986	18820	37	72
30	56	26	86	185	23234	9797	42	38
31	33	27	106	190	38468	19221	60	55
32	21	28	90	195	35050	14344	54	43
33	40	28	450	201	23756	14382	40	49
34	21	27	181	208	30242	10224	47	53
35	33	26	163	219	30122	12512	49	40
36	15	26	127	237	39710	13533	56	45
37	17	25	138	265	30221	14875	40	47
38	25	25	41	303	21455	13224	31	33
39	40	25	200	345	24488	10246	43	44
40	10	26	1006	382	33511	6486	48	33
41	40	26	521	405	36297	7163	53	37
42	20	27	218	412	19834	5800	38	25
43	30	29	180	407	25949	6282	40	19
44	19	31	1035	390	28841	12633	44	34
45	13	34	64	359	26294	13189	38	26
46	64	36	92	320	32424	7783	50	29
47	51	39	558	276	17235	11031	30	28
48	22	41	100	226	19026	6523	27	18
49	20	43	232	174	27379	5215	40	18
50	12	44	291	120	20478	5761	27	19

Appendix 1: Supporting Material

Year	Average enterprise sales				Number of enterprises		Records in data	
	Rural		Urban		Rural	Urban	Rural	Urban
	Average	Smooth	Average	Smooth				
51	171	44	59	69	19233	5310	28	18
52	24	41	152	25	22633	6364	38	18
53	14	37	166	-3	12381	3778	17	10
54	22	33	178	-6	17999	4031	29	17
55	24	28	39	29	15533	11479	25	21
56	23	24	56	121	18717	6452	31	16
57	33	21	139	288	10239	1219	19	6
58	13	19	587	547	17976	4666	20	14
59	9	18	354	912	11603	4641	23	15
60	7	19	238	1394	8523	723	13	5
61	12	21	2345	1992	8527	3050	13	11
62	12	24	522	2687	15479	1073	20	6
63	58	28	6387	3440	8534	782	12	8
64	19	36	NA	NA	644	NA	1	NA

Source: own construction based on KIHBS 2005/06.

Note: data smoothed with a spline with 8 degrees of freedom.

Appendix 1: Supporting Material

Table 6.9: Sales and profits of household enterprises by location and age (number and KSh)

Location	Age group	Number of Enterprises	Sum of Sales	Average Sales	Number of Enterprises	Sum of Profits	Average Profits
Commercial area	20-24	14,350	982,969	68.5	10,335	415,410	40.2
	25-29	35,087	1,637,188	46.7	31,218	1,311,747	42.0
	30-34	33,927	9,396,848	277.0	29,876	8,745,800	292.7
	35-64	140,317	79,146,693	564.1	103,827	45,422,685	437.5
Home inside	20-24	16,031	176,150	11.0	15,715	333,310	21.2
	25-29	37,492	594,717	15.9	33,714	640,428	19.0
	30-34	43,538	809,259	18.6	33,790	940,165	27.8
	35-64	175,523	2,860,416	16.3	148,760	3,096,263	20.8
Home outside	20-24	15,294	276,440	18.1	12,703	312,260	24.6
	25-29	22,442	519,495	23.1	20,683	944,255	45.7
	30-34	38,830	1,218,152	31.4	31,022	1,563,409	50.4
	35-64	160,713	3,525,671	21.9	126,073	3,831,368	30.4
Jua kali	20-24	1,430	54,166	37.9	1,430	125,180	87.5
	25-29	7,036	376,600	53.5	5,350	193,660	36.2
	30-34	4,083	254,090	62.2	3,649	249,000	68.2
	35-64	23,645	1,511,645	63.9	17,418	2,823,525	162.1
Kiosks	20-24	1,267	47,000	37.1	1,111	14,470	13.0
	25-29	9,452	261,260	27.6	4,849	93,650	19.3
	30-34	1,962	174,000	88.7	1,162	37,600	32.4
	35-64	27,015	793,240	29.4	14,285	678,870	47.5
Local market	20-24	19,906	535,420	26.9	19,902	656,480	33.0
	25-29	43,742	2,621,798	59.9	40,694	1,646,214	40.5
	30-34	48,000	14,088,242	293.5	47,120	2,557,858	54.3
	35-64	251,267	10,621,896	42.3	212,056	7,740,469	36.5
Mobile	20-24	10,260	718,358	70.0	8,234	465,455	56.5
	25-29	25,091	2,098,690	83.6	20,905	1,282,113	61.3
	30-34	44,068	4,275,340	97.0	30,648	7,583,920	247.4
	35-64	114,952	8,018,522	69.8	92,950	6,582,400	70.8
Other fixed	20-24	11,009	585,620	53.2	8,955	396,250	44.2
	25-29	7,161	514,450	71.8	6,293	266,460	42.3
	30-34	18,552	1,261,080	68.0	13,839	4,091,870	295.7
	35-64	40,673	31,655,913	778.3	37,123	19,344,140	521.1
Other	20-24	3,919	70,200	17.9	3,967	159,900	40.3
	25-29	6,757	160,250	23.7	3,223	254,100	78.8
	30-34	5,626	171,250	30.4	5,400	140,300	26.0
	35-64	18,565	23,505,900	1266.1	17,810	1,062,172	59.6

Appendix 1: Supporting Material

Location	Age group	Number of Enterprises	Sum of Sales	Average Sales	Number of Enterprises	Sum of Profits	Average Profits
Roadside	20-24	12,675	242,620	19.1	5,976	215,250	36.0
	25-29	31,537	1,854,538	58.8	28,021	1,796,330	64.1
	30-34	37,982	717,845	18.9	30,554	795,520	26.0
	35-64	116,284	3,683,962	31.7	97,050	2,778,021	28.6
All		1,677,460	12,017,893	126.4	1,377,689	131,588,277	95.5

Source: own construction based on KIHBS 2005/06.

Note: data smoothed with a spline with 8 degrees of freedom.

Table 6.10: Main source of start-up capital by area (number of enterprises)

Source	Rural	Urban	All
Family loan	63,821	55,423	119,245
Family gift	138,107	109,860	247,967
Sale of assets	79,830	13,220	93,050
Proceeds	104,613	57,035	161,649
Own savings	536,324	332,708	869,031
Saccos	26,785	26,721	53,507
Non-agricultural credit	7,909	3,306	11,215
Money lender	4,045	2,586	6,631
Inheritance	6,363	4,784	11,146
Other	39,201	21,119	60,320
None	120,253	26,300	146,553
Undefined	4,631	2,127	6,759
All	1,131,882	655,190	1,787,072

Source: own construction based on KIHBS 2005/06.

Table 6.11: Main source of start-up capital by age group (number of enterprises)

Source	15-19	20-24	25-29	30-34	35-64
Family loan	354	11,806	20,137	18,731	68,218
Family gift	1,619	20,056	34,030	44,074	148,412
Sale of assets	206	3,987	13,649	12,748	62,461
Proceeds	3,195	11,871	24,677	21,154	100,751
Own savings	8,315	51,027	125,252	155,973	528,771
Saccos	83	2,109	3,464	11,237	36,614
Banks	0	0	0	0	0
Money lender	0	0	1,419	1,100	4,112
Inheritance	114	1,241	2,492	1,961	5,338
Other	355	3,958	3,465	9,470	43,073
Undefined	0	0	176	3,114	3,469
Non-agricultural credit	218	27	870	938	9,162
None	1,087	7,274	9,604	17,749	110,839

Source: own construction based on KIHBS 2005/06.

Table 6.12: Household enterprises by number of employees and area

Number of employees	Rural Enterprises		Urban Enterprises	
	Number	Percent	Number	Percent
0	94,938	8.3	64,382	9.8
1	780,982	68.6	478,202	72.5
2	206,954	18.2	96,485	14.6
3	39,982	3.5	15,189	2.3
4	7,670	0.7	3,882	0.6
5+	8,603	0.8	1,274	0.2
All	1,139,128	100	659,414	100

Source: own construction based on KIHBS 2005/06.

Appendix 1: Supporting Material

Table 6.13: Household enterprises employment by area, type, and age of owner (number)

Area of Residence	Gender	Age group	Family members			Non-family members		
			Number of Enterprises	Employment		Number of Enterprises	Employment	
				total	mean		total	mean
Rural	Male	15-19	3,768	3,768	1.00	3,768	0	0.00
		20-24	26,408	32,380	1.23	26,408	2,662	0.10
		25-29	84,369	92,117	1.09	84,369	19,232	0.23
		30-34	131,660	158,377	1.20	131,660	42,083	0.32
		35-64	522,601	699,129	1.34	522,601	246,537	0.47
	Female	15-19	4,416	6,542	1.48	4,416	3,138	0.71
		20-24	29,508	26,220	0.89	29,508	4,128	0.14
		25-29	42,083	45,494	1.08	42,083	4,884	0.12
		30-34	43,336	42,338	0.98	43,336	11,291	0.26
		35-64	250,980	287,032	1.14	250,980	44,752	0.18
	All	15-19	8,184	10,310	1.26	8,184	3,138	0.38
		20-24	55,916	58,600	1.05	55,916	6,790	0.12
		25-29	126,452	137,611	1.09	126,452	24,116	0.19
		30-34	174,996	200,715	1.15	174,996	53,374	0.31
		35-64	773,580	986,161	1.27	773,580	291,289	0.38
All rural			1,139,128	1,393,397	1.22	1,139,128	378,706	0.33
Urban	Male	15-19	3,077	4,109	1.34	3,077	366	0.12
		20-24	34,261	33,992	0.99	34,261	18,460	0.54
		25-29	69,036	75,608	1.10	69,036	61,630	0.89
		30-34	91,389	106,376	1.16	91,389	48,558	0.53
		35-64	251,773	284,043	1.13	251,773	227,909	0.91
	Female	15-19	4,285	5,102	1.19	4,285	1,161	0.27
		20-24	23,178	26,481	1.14	23,178	7,804	0.34
		25-29	44,789	42,574	0.95	44,789	20,709	0.46
		30-34	31,865	38,021	1.19	31,865	5,504	0.17
		35-64	105,761	123,996	1.17	105,761	38,493	0.36
	All	15-19	7,362	9,211	1.25	7,362	1,527	0.21
		20-24	57,439	60,473	1.05	57,439	26,264	0.46
		25-29	113,826	118,182	1.04	113,826	82,340	0.72
		30-34	123,254	144,397	1.17	123,254	54,062	0.44
		35-64	357,534	408,038	1.14	357,534	266,402	0.75
All urban			659,414	740,302	1.12	659,414	430,595	0.65

Source: own construction based on KIHBS 2005/06.

Table 6.14: Household enterprises by income (consumption) decile and area (number and percent)

Decile	Number			Percent		
	Rural	Urban	All	Rural	Urban	All
1	78,135	48,506	126,640	6.9	7.4	7.0
2	88,813	52,530	141,343	7.8	8.0	7.9
3	119,104	75,751	194,855	10.5	11.5	10.8
4	101,569	57,151	158,720	8.9	8.7	8.8
5	114,697	65,695	180,392	10.1	10.0	10.0
6	133,855	78,149	212,004	11.8	11.9	11.8
7	115,509	72,851	188,361	10.1	11.0	10.5
8	137,630	93,316	230,947	12.1	14.2	12.8
9	128,851	65,919	194,770	11.3	10.0	10.8
10	120,965	49,546	170,510	10.6	7.5	9.5
All	1,139,128	659,414	1,798,543	100	100	100

Source: own construction based on KIHBS 2005/06.

Table 6.15: Household enterprises by quintile, area and age group (number)

Age group	Quintile	Rural records	Rural enterprises	Urban records	Urban enterprises
15-19	1	1	148	6	1,825
	2	5	1,942	7	1,038
	3	2	1,773	2	923
	4	4	2,660	8	1,788
	5	3	1,661	8	1,787
20-24	1	4	3,288	16	4,633
	2	10	7,070	33	6,968
	3	15	8,859	34	10,659
	4	24	12,000	45	18,853
	5	43	24,699	35	16,327
25-29	1	17	11,213	36	10,974
	2	12	9,329	48	12,097
	3	32	25,750	84	29,417
	4	52	31,250	97	40,597
	5	71	48,912	61	20,742
30-34	1	27	18,859	35	11,136
	2	47	30,883	68	27,891
	3	57	32,425	84	36,455
	4	68	41,416	71	28,054
	5	76	51,412	66	19,718
35-64	1	210	133,441	210	72,468
	2	259	171,449	229	84,909
	3	281	179,746	198	66,391
	4	242	165,814	183	76,876
	5	190	123,131	146	56,890

Source: own construction based on KIHBS 2005/06.

Appendix 1: Supporting Material

Table 6.16: Average sales and profits of household enterprises by quintile, area, and age group (KSh)

Age group	Quintile	Rural		Urban	
		Mean Sales	Mean Profits	Mean Sales	Mean Profits
15-19	1	62.2		13.9	14.5
	2	24.8	161.4	25.7	63.0
	3	7.9	19.4	7.6	3.2
	4	10.5	3.3	101.0	78.1
	5	7.5	15.0	69.5	119.1
20-24	1	3.3	22.9	31.4	35.6
	2	5.4	7.6	98.2	81.5
	3	13.8	10.5	58.5	50.9
	4	18.7	39.5	44.6	43.6
	5	21.4	20.9	49.4	53.0
25-29	1	15.2	14.9	36.1	84.8
	2	3.1	4.7	142.4	67.4
	3	14.9	11.9	110.8	109.2
	4	14.7	16.9	48.1	64.9
	5	19.7	17.5	97.8	69.6
30-34	1	14.6	11.7	64.7	58.6
	2	473.0	27.4	46.1	71.6
	3	24.8	31.8	69.0	114.1
	4	28.8	40.3	59.3	79.3
	5	30.9	34.8	586.3	1,207.0
35-64	1	9.2	14.9	57.9	86.6
	2	18.1	17.8	255.6	344.3
	3	19.1	21.4	202.3	139.0
	4	44.8	47.4	315.1	131.0
	5	50.2	50.6	1,182.2	1,194.5

Source: own construction based on KIHBS 2005/06.

Appendix 1: Supporting Material

Table 7.1: Unemployment and population by province, percent and thousands (KSh)

Age group	Unemployment rate (%)			Youth Population (thousands)	
	All	Adult	Youth	Unemployed	All
Nairobi	11.9	5.3	17.6	183,006	1,199,420
Central	27.0	15.2	35.9	229,206	1,505,766
Coast	14.3	8.4	19.0	224,681	1,091,337
Eastern	29.0	15.1	35.5	324,617	1,945,120
North Eastern	62.0	49.7	67.8	110,061	311,348
Nyanza	11.4	2.9	17.6	177,976	1,777,329
Rift Valley	18.0	8.7	24.0	449,770	3,088,646
Western	16.8	7.8	23.7	184,427	1,404,747

Source: own construction based on KIHBS 2005/06.

Table 7.2: Youth population by province and years of age (thousands)

(a) Actual and smooth

Age	Central		Coast		Eastern		Nairobi		North Eastern		Nyanza		Rift Valley		Western	
	Actual	Smooth	Actual	Smooth	Actual	Smooth	Actual	Smooth	Actual	Smooth	Actual	Smooth	Actual	Smooth	Actual	Smooth
15	111.6	116.7	88.7	86.3	162.0	158.5	31.7	30.2	38.1	33.9	153.2	150.0	262.1	241.9	140.8	140.5
16	118.9	113.3	77.1	83.3	139.7	154.3	31.8	39.5	25.6	28.8	145.1	143.8	207.5	225.1	128.5	131.5
17	106.9	109.1	72.3	80.6	151.2	150.4	46.8	48.8	20.2	24.4	122.1	138.3	197.9	211.8	120.8	122.5
18	114.0	103.8	101.4	77.2	165.0	144.8	68.9	57.1	25.5	21.0	138.4	133.8	209.5	202.9	118.4	113.0
19	91.0	97.5	65.2	71.8	133.6	136.3	60.0	63.1	13.6	18.2	135.0	128.7	188.9	196.7	111.2	102.1
20	83.6	91.4	64.7	65.8	118.0	125.9	75.3	67.1	24.4	15.9	130.3	121.4	193.1	191.5	85.8	90.3
21	96.0	85.9	51.7	60.4	120.3	115.2	58.6	69.7	8.0	13.9	109.2	111.9	196.2	185.0	72.9	79.1
22	82.7	80.4	55.9	56.5	108.1	104.5	67.5	71.9	13.4	12.9	93.6	101.5	186.8	175.3	72.0	69.8
23	66.3	75.6	66.4	53.3	88.2	94.5	93.1	73.5	8.6	12.8	105.8	91.2	176.3	162.3	63.3	62.3
24	66.1	72.5	38.4	50.2	77.5	86.8	48.8	74.0	11.9	13.5	65.4	81.4	111.9	148.6	44.4	57.1
25	80.0	70.7	49.3	48.0	82.4	81.5	97.9	74.6	25.5	14.1	78.0	73.4	150.5	137.9	60.5	54.1
26	64.6	68.8	47.1	46.6	86.6	77.5	48.8	74.3	11.9	13.9	66.5	67.2	123.9	129.6	54.4	51.9
27	72.6	66.5	45.7	45.2	74.4	73.6	87.7	73.7	7.8	13.5	62.4	62.8	128.3	123.3	53.6	49.4
28	61.1	63.2	48.2	43.6	65.2	70.1	81.9	71.1	13.6	13.6	49.3	60.3	120.1	118.5	46.1	46.4
29	60.7	59.1	40.6	41.6	63.9	67.4	53.1	66.3	5.8	13.9	64.6	59.1	98.2	115.2	44.6	43.5
30	63.3	54.3	36.9	39.6	72.6	65.3	74.4	60.7	35.3	13.7	72.5	57.6	128.8	113.3	33.1	41.1
31	36.9	49.6	32.7	38.2	61.0	62.9	47.5	54.6	2.8	12.0	46.4	54.8	103.0	110.7	43.0	39.7
32	46.8	46.4	47.0	37.1	61.3	60.5	48.2	49.6	11.4	9.9	50.8	51.9	122.9	106.9	38.7	38.9
33	48.7	44.7	34.5	35.5	55.4	58.2	45.2	46.5	3.6	8.5	56.0	49.1	98.0	101.1	44.3	38.2
34	34.0	44.3	27.4	34.1	58.5	56.1	32.1	46.0	4.2	8.2	32.8	46.9	85.1	94.8	28.3	37.7
35	53.0	45.2	36.9	33.2	53.4	53.9	60.6	47.7	13.9	8.8	53.2	45.7	92.5	88.9	42.4	37.8

Source: own construction based on KIHBS 2005/06.

* Smoothed estimates using an spline with 6 degrees of freedom.

(b) Percent

Age	Central	Coast	Eastern	Nairobi	North Eastern	Nyanza	Rift Valley	Western	All
15	12.2	9.0	16.5	3.2	3.5	15.7	25.3	14.7	100
16	12.3	9.1	16.8	4.3	3.1	15.6	24.5	14.3	100
17	12.3	9.1	17.0	5.5	2.8	15.6	23.9	13.8	100
18	12.2	9.0	17.0	6.7	2.5	15.7	23.8	13.2	100
19	12.0	8.8	16.7	7.8	2.2	15.8	24.2	12.5	100
20	11.9	8.5	16.4	8.7	2.1	15.8	24.9	11.7	100
21	11.9	8.4	16.0	9.7	1.9	15.5	25.7	11.0	100
22	12.0	8.4	15.5	10.7	1.9	15.1	26.1	10.4	100
23	12.1	8.5	15.1	11.8	2.0	14.6	25.9	10.0	100
24	12.4	8.6	14.9	12.7	2.3	13.9	25.4	9.8	100
25	12.8	8.7	14.7	13.5	2.5	13.2	24.9	9.8	100
26	13.0	8.8	14.6	14.0	2.6	12.7	24.5	9.8	100
27	13.1	8.9	14.5	14.5	2.7	12.4	24.3	9.7	100
28	13.0	9.0	14.4	14.6	2.8	12.4	24.3	9.5	100
29	12.7	8.9	14.5	14.2	3.0	12.7	24.7	9.3	100
30	12.2	8.9	14.6	13.6	3.1	12.9	25.4	9.2	100
31	11.7	9.0	14.9	12.9	2.8	13.0	26.2	9.4	100
32	11.6	9.2	15.1	12.4	2.5	12.9	26.6	9.7	100
33	11.7	9.3	15.2	12.2	2.2	12.9	26.5	10.0	100
34	12.0	9.3	15.2	12.5	2.2	12.7	25.8	10.3	100
35	12.5	9.2	14.9	13.2	2.4	12.6	24.6	10.5	100

* Per cent figures are calculated over smoothed estimates.

Table 7.3: Youth unemployment rates by province and years of age (percent)

Age	Central	Coast	Eastern	Nairobi	North Eastern	Nyanza	Rift Valley	Western
15	7.3	26.6	16.7	6.9	83.6	16.4	20.6	25.6
16	19.8	50.4	18.8	63.8	85.0	27.1	33.1	30.0
17	14.7	52.8	20.7	82.6	78.0	21.3	27.2	30.8
18	19.4	52.0	20.4	64.5	78.5	29.0	36.3	38.5
19	18.8	48.9	27.9	90.1	63.9	29.0	33.8	35.6
20	28.9	40.8	33.9	64.6	67.3	32.7	33.4	31.9
21	20.4	50.0	23.0	56.4	83.4	20.6	29.9	24.4
22	33.8	42.2	24.1	50.3	71.1	28.8	36.5	31.8
23	14.3	53.0	28.0	32.5	67.8	18.7	31.1	37.9
24	14.5	37.4	18.9	27.8	78.2	16.5	27.8	33.2
25	21.4	44.2	17.6	33.0	62.1	22.3	25.5	19.5
26	18.0	28.1	20.3	34.8	80.2	12.1	18.3	20.0
27	20.8	32.8	22.7	32.5	50.9	9.1	15.3	17.3
28	21.6	23.8	14.4	38.0	50.4	14.6	18.4	19.7
29	9.4	23.2	10.2	26.7	49.2	10.2	22.7	15.1
30	15.6	16.4	14.3	7.7	65.2	8.0	16.0	9.1
31	5.8	28.7	6.8	17.1	25.3	3.6	12.6	13.0
32	7.8	15.1	8.9	4.9	35.4	3.2	14.0	12.3
33	7.4	21.2	12.2	19.4	28.1	3.8	11.4	3.6
34	10.5	22.4	7.0	16.7	68.9	6.6	8.2	4.6

Source: own construction based on KIHBS 2005/06.

Table 7.4: The unemployed youth by province and age group (thousands)

Age group	Central	Coast	Eastern	Nairobi	North Eastern	Nyanza	Rift Valley	Western
15-19	35.17	57.53	53.88	59.46	37.79	47.91	98.07	61.97
20-24	66.83	84.44	88.93	124.37	28.94	80.90	189.41	71.49
25-29	59.34	56.95	54.27	113.09	23.60	37.57	102.79	36.59
30-34	21.67	30.28	27.59	27.70	19.74	11.60	59.50	14.37

Source: own construction based on KIHBS 2005/06.

Appendix 1: Supporting Material

Table 7.5: Youth's main activity by age group (percent)

Age group	Province	Activity						
		Formal	Home	Informal	Other	Student	Unemployed	All
15-19	Central	0.88	5.65	13.59	6.21	59.45	14.22	100
	Coast	0.20	3.93	25.33	3.98	59.39	7.17	100
	Eastern	0.75	4.39	7.38	4.45	58.17	24.85	100
	Nairobi	0.96	1.89	30.36	3.33	56.98	6.48	100
	North Eastern	0.00	4.50	8.14	10.70	45.95	30.70	100
	Nyanza	0.03	4.72	19.75	5.85	62.74	6.91	100
	Rift Valley	0.27	4.52	19.60	4.56	61.84	9.20	100
	Western	0.05	3.65	20.40	7.37	58.54	10.00	100
20-24	Central	5.67	10.32	30.96	7.57	15.02	30.47	100
	Coast	1.44	5.49	49.04	6.92	19.75	17.36	100
	Eastern	7.02	4.13	35.79	4.56	12.26	36.23	100
	Nairobi	4.11	3.55	53.90	4.13	17.37	16.93	100
	North Eastern	1.43	15.77	15.37	11.61	12.13	43.68	100
	Nyanza	1.78	7.47	48.04	6.93	19.73	16.04	100
	Rift Valley	4.21	7.66	42.35	4.22	19.63	21.92	100
	Western	1.98	8.32	42.97	4.46	21.15	21.12	100
25-29	Central	11.31	11.92	44.60	3.69	3.82	24.66	100
	Coast	3.47	5.95	65.80	6.58	3.63	14.57	100
	Eastern	23.18	3.35	38.12	1.75	2.99	30.61	100
	Nairobi	9.91	1.99	67.21	2.65	0.74	17.51	100
	North Eastern	1.19	26.01	22.09	12.49	1.75	36.46	100
	Nyanza	5.93	7.58	66.71	4.16	3.91	11.71	100
	Rift Valley	9.76	7.90	56.10	4.89	4.80	16.56	100
	Western	2.30	10.71	60.44	4.11	8.32	14.11	100
30-34	Central	18.34	11.77	49.14	3.31	0.48	16.96	100
	Coast	5.74	5.57	74.55	4.89	0.31	8.93	100
	Eastern	32.34	5.26	46.91	3.26	1.03	11.20	100
	Nairobi	9.49	2.73	76.08	2.26	0.00	9.44	100
	North Eastern	4.13	25.13	23.90	12.29	0.10	34.44	100
	Nyanza	7.83	6.76	74.01	5.71	1.20	4.49	100
	Rift Valley	16.86	10.31	58.24	3.19	0.34	11.06	100
	Western	8.23	5.62	72.90	4.15	1.43	7.67	100
35-64	Central	13.18	12.67	52.18	10.27	0.00	11.69	100
	Coast	7.39	6.07	72.26	6.82	0.18	7.29	100
	Eastern	29.06	6.50	43.71	6.84	0.91	12.98	100
	Nairobi	9.51	2.49	79.05	3.85	0.14	4.96	100
	North Eastern	3.46	23.46	20.31	29.33	0.00	23.44	100
	Nyanza	12.89	5.00	72.15	7.24	0.18	2.54	100
	Rift Valley	13.95	8.02	64.16	6.30	0.15	7.42	100
	Western	6.96	7.08	70.23	9.13	0.03	6.57	100

Source: own construction based on KIHBS 2005/06..

Table 7.6: Unemployment rates by gender, province, and age group (percent)

Age	Central		Coast		Eastern		Nairobi		North Eastern		Nyanza		Rift Valley		Western	
	Male	Female	Male	Female	Male	Female	Male	Female	Male	Female	Male	Female	Male	Female	Male	Female
15-19	14.5	19.7	47.0	51.2	16.2	29.5	66.5	81.0	69.3	88.4	18.8	32.1	24.3	40.2	27.2	39.0
20-24	17.7	28.0	39.4	52.0	19.3	33.5	35.1	53.9	60.0	82.8	14.3	33.8	25.4	38.9	23.8	39.9
25-29	12.8	24.1	21.1	40.4	17.5	17.2	24.2	43.5	37.4	82.9	9.6	17.9	11.4	30.2	15.4	20.7
30-34	4.8	14.2	9.6	35.0	8.0	12.4	3.2	26.3	29.6	81.6	4.4	6.0	8.1	19.3	9.7	7.5
35-64	5.1	5.5	13.0	17.8	6.8	9.9	9.5	24.7	39.4	69.3	2.2	3.4	6.3	11.6	8.3	7.4

Source: own construction based on KIHBS 2005/06.

Table 7.7: Mean wages by province and type of employer, all ages (KSh thousands)

Province	Informal employee	Informal Other	Private Employee	Public Employee
Central	4494.80	6698.33	9122.59	18797.17
Coast	5483.01	4063.08	8515.17	19418.51
Eastern	2838.19	3672.42	8799.22	20859.93
Nairobi	6389.78	18850.46	29689.08	33297.37
North Eastern	3111.14	8062.79	12163.63	14819.51
Nyanza	3091.31	3317.66	10349.33	18388.06
Rift Valley	3936.08	5442.44	7573.43	16487.32
Western	2071.90	2445.75	9362.56	15642.90

Source: own construction based on KIHBS 2005/06.

Appendix 1: Supporting Material

Table 7.8 Mean wages by age group, province and type of employer (KSh, thousands)

Age group	Province	Type of Employer			
		Informal employer	Informal Other	Private employer	Public employer
15-19	Central	2303.12	2286.92	3071.82	24490.40
	Coast	2386.63	1746.29	4075.75	0.00
	Eastern	1925.58	1234.65	2610.66	0.00
	Nairobi	3877.15	0.00	6140.78	0.00
	North Eastern	1973.74	0.00	0.00	0.00
	Nyanza	1761.67	1123.34	2000.00	2400.00
	Rift Valley	2468.90	1295.47	3099.74	0.00
	Western	1297.60	1721.04	3782.56	0.00
20-24	Central	3237.00	6883.78	5106.52	6031.45
	Coast	3999.63	3552.00	5479.05	4600.00
	Eastern	2541.14	3745.91	4534.11	7690.18
	Nairobi	4721.86	4451.03	12352.02	19240.64
	North Eastern	2135.37	0.00	5000.00	18258.20
	Nyanza	3362.15	1591.13	3504.52	5446.68
	Rift Valley	2397.94	3199.88	3944.92	5468.56
	Western	1842.54	1801.06	4080.92	4220.70
25-29	Central	4132.36	1495.61	6980.09	5677.83
	Coast	5337.59	3580.15	7589.05	13702.65
	Eastern	2817.83	6738.97	11878.98	20825.94
	Nairobi	6023.87	7280.98	15401.70	17299.02
	North Eastern	4223.78	6871.60	22000.00	12528.71
	Nyanza	2929.05	3077.34	9244.74	11977.27
	Rift Valley	3822.65	5383.41	6263.92	14323.48
	Western	2746.04	2028.56	6615.47	16825.30
30-34	Central	4314.65	2557.26	9570.65	29222.46
	Coast	5885.76	4629.80	7784.51	18622.86
	Eastern	2805.65	2761.64	10250.85	19055.76
	Nairobi	7152.43	14930.90	27626.72	26812.78
	North Eastern	200.00	7117.79	14769.25	13651.41
	Nyanza	2039.22	2200.46	13992.87	9743.65
	Rift Valley	5610.34	5467.25	6562.96	15465.72
	Western	2366.00	1224.19	7795.66	17779.47
35-64	Central	6027.21	8987.12	13255.18	19162.13
	Coast	6800.07	4328.83	11369.85	21100.65
	Eastern	3459.06	3448.17	9396.12	21368.26
	Nairobi	8824.26	29201.86	47320.52	37144.70
	North Eastern	4507.42	9641.25	20000.00	15233.50
	Nyanza	3880.12	4723.23	10937.76	20512.11
	Rift Valley	4688.18	7066.20	11115.21	17720.24
	Western	2193.19	3002.85	13367.18	15961.60

Source: own construction based on KIHBS 2005/06.

Table 8.1: Number of young people employed in KKV public works by ministry projects

Ministry	Employed
Prime minister	20
Planning	3,135
Youth affairs	9,200
Local government	14,700
Regional development	18,950
Environment & natural resources	20,000
Forestry & wildlife	20,000
Roads	57,519
Water & irrigation	71,934

Source: construction based on program's official data at www.kkv.go.ke.

Table 8.2: Budgetary Allocation for NYS (KSh)

Financial Year	MOYAS Budget	NYS Budget	% of MOYAS Budget
Recurrent Budget			
2007/2008	45,913,347	25,767,697	56.12
2008/2009	57,586,700	25,432,065	44.16
Development Budget			
2007/2008	25,476,142	8,098,571	31.79
2008/2009	45,688,571	21,417,500	46.88
2009/2010	50,286,350	23,172,857	46.08

Source: ...

Appendix 1: Supporting Material

Table A1.1 Comparing methods of presenting frequency estimates of activity choice

Age	Mean	Five year centred mean	Spline	Mean	Five year centred mean	Spline
	Unemployment rate			Unemployed, thousands		
17	0.62	0.37	0.17	19.37	20.76	22.02
22	3.31	3.85	4.17	43.06	44.12	43.27
27	8.79	9.78	9.53	57.63	56.42	56.73
32	16.93	14.33	13.53	61.02	63.04	63.07
50	10.26	13.33	13.05	59.22	63.42	64.83
	Unemployment rate			Unemployed, thousands		
17	8.97	10.38	11.94	61.47	59.11	56.14
22	25.56	22.09	20.28	15.71	17.39	20.43
27	18.16	18.52	18.30	4.95	3.71	3.30
32	9.14	10.37	12.26	0.17	0.57	-0.38
50	8.62	7.22	6.98	0.00	0.01	0.10
	Unemployment rate			Unemployed, thousands		
17	4.63	4.16	4.47	4.94	5.21	5.25
22	7.15	6.88	6.52	5.21	5.66	5.33
27	7.44	7.29	7.41	3.02	4.28	4.73
32	8.22	7.81	7.61	4.52	3.88	3.92
50	7.80	6.98	6.71	14.10	9.04	8.34

Source: own construction based on KIHBS 2005/06.

Note: spline refers to spline cubic smoother.

Appendix 2

To facilitate the interpretation of economic, employment and population estimates, we chose to present results using a spline cubic smoother. In most cases we adopted, and noted, a relatively strong smoothing corresponding to around 7 degrees of freedom. In the instances in which we do not make a note of the degrees of freedom used, the adjustment was automatically set through cross-validation by the graphing software.

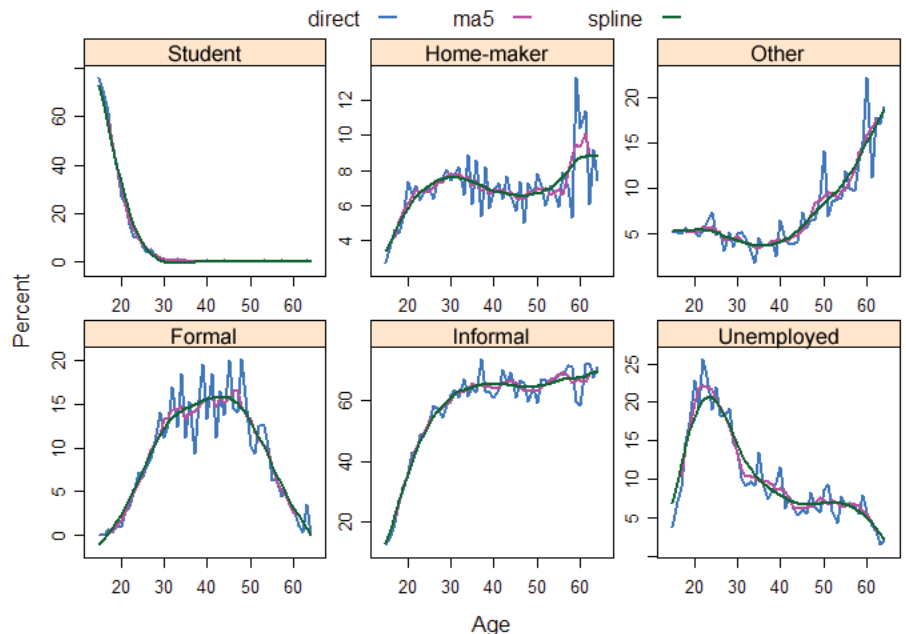
Estimating youth employment and activity choices for each year of age

Since youth unemployment problems vary significantly depending on the age of the young people and other socio-demographic conditions, we opted for a presentation of the estimates derived from the KIHBS for each year of young people’s lives. This presentation, however, poses strong demands on the sample size. In cases in which several conditions are at play (e.g. education, gender, type of area of residence etc.) several cells had little or even no observations. The presentation of smoothed values of the direct estimates from the KIHBS 2005/2006 becomes particularly useful.

We chose this presentation format over the more standard procedure of calculating frequencies or means for age cohorts (e.g. young people and adults, or for young people at five-year age intervals) to avoid masking useful information by the arbitrary definition of age brackets. We hope that this format of presenting results will allow policymakers to obtain a sufficiently detailed picture of what age groups within the youth range are the ones likely to be facing the most acute unemployment issues. Such level of detail is particularly relevant for the discussion of youth unemployment, as this is a period of life where important changes occur and decisions with long-term implications are made.

The approach provides good insights into the unemployment situation of young people while keeping a close relationship with the data. To illustrate the differences between the direct estimates and the smoothed version, we look at the choice of activity as estimated directly from the data, the five-year moving average of the direct estimates, and at the spline smoothing of the direct estimates. Figure A2.1 makes apparent that the spline smoothed estimate and the five-year moving average are generally quite close, and that the direct estimates are not far from either of the two smoothing estimates during most of the years that correspond to young people’s lives. The indicators for which there is a larger difference between the smoothing and the direct estimates are unemployed, home-maker and other inactive. The difference is due to a significant variation in the direct estimates. Estimates for the share of students are remarkably stable,

Figure A2.1 Distribution of the population across activity by years of age (percent)



Source: authors’ calculations based on KIHBS 2005/06.

Note: direct refers to the direct frequency for that year of age obtained from the micro-data; ma5 refers to a five year centred moving average of the direct frequencies; spline refers to a cubic spline smoother with the degree of smoothing automatically set through cross-validation by the software.

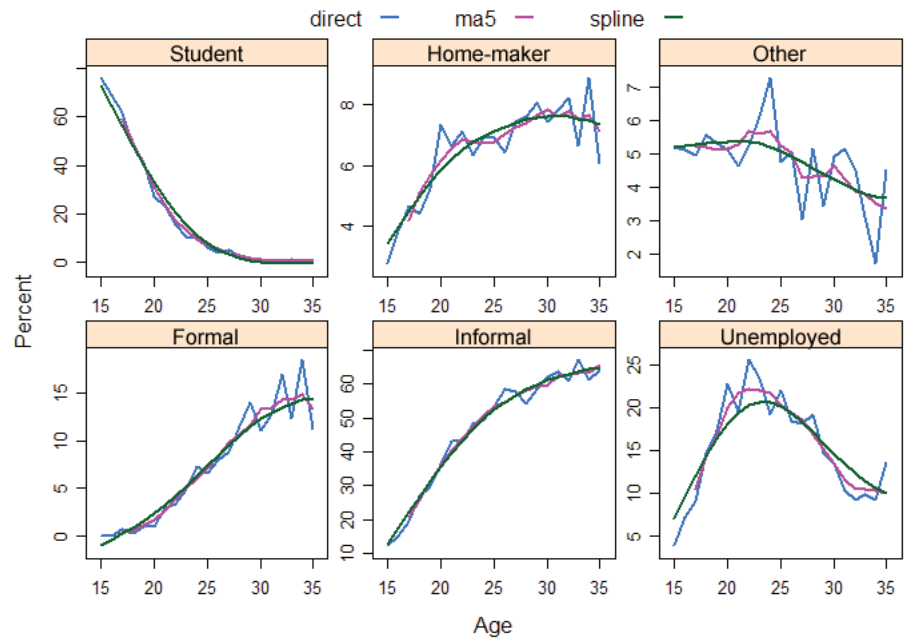
Appendix 2

which makes them lie within a close distance from the smoothed versions. Direct estimates for formal and informal employment are relatively stable for all youth years, as instability in these estimates occurs in the adult period of life. This has an immediate impact on how close they are to the smoothed versions.

To better appreciate the relationship between direct estimates and their smoothed versions, we plot the same data as in Figure A2.1 exclusively for the youth years. Figure A2.2 shows that the spline smoothing gives perhaps a better general understanding of how unemployment and youth choices behave.

An interesting question is: how different would a presentation of results that followed the standard format of five-year intervals from the format adopted here be? Although results are not identical, they both tell the same story. Figure A2.3 below presents direct frequency corresponding to the mid-point of the standard five-year age cohorts (ages 15–19, 20–24, 25–29, 30–34 years), five-year centred averages for the youth and adult age brackets, and the smoothed estimate corresponding to the centre of each of the youth and adult age brackets. The standard age group averages and the smoothed point estimate are close to each other in most cases; sometimes one is above the other, while in other instances the opposite is true. In various cases, the estimates are practically the same. This suggests that the detail gained by presenting smoothed yearly estimates does not come at the expense of distorting the picture that a standard presentation will give. As expected, the one-year direct estimates are also relatively close to the five-year averages and the smoothed estimates, but they fluctuate more than either of the other two.

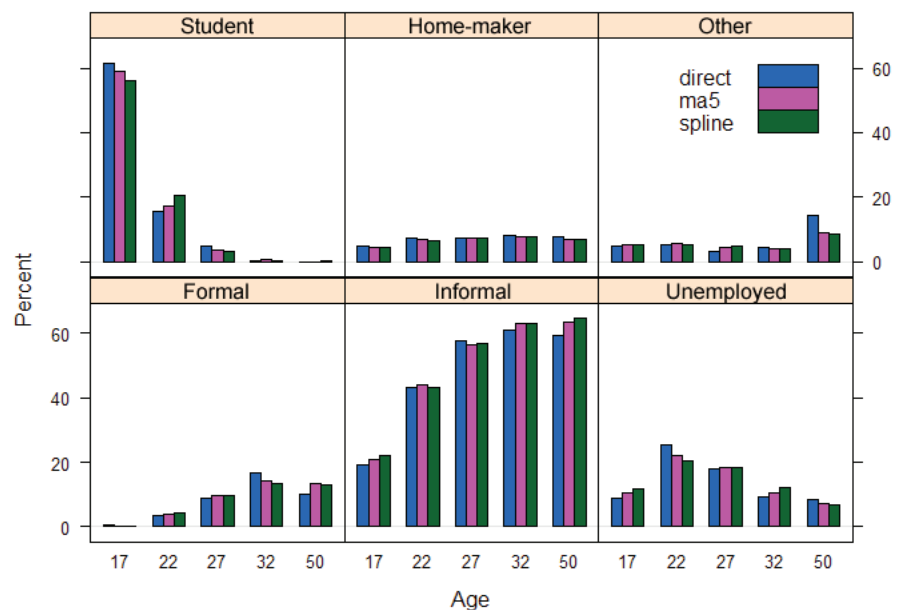
Figure A2.2 Distribution of the youth population across activity by years of age (percent)



Source: authors' calculations based on KIHBS 2005/06.

Note: see annotations to Figure A2.1.

Figure A2.3 Distribution of the youth population across activity by years of age (percent)



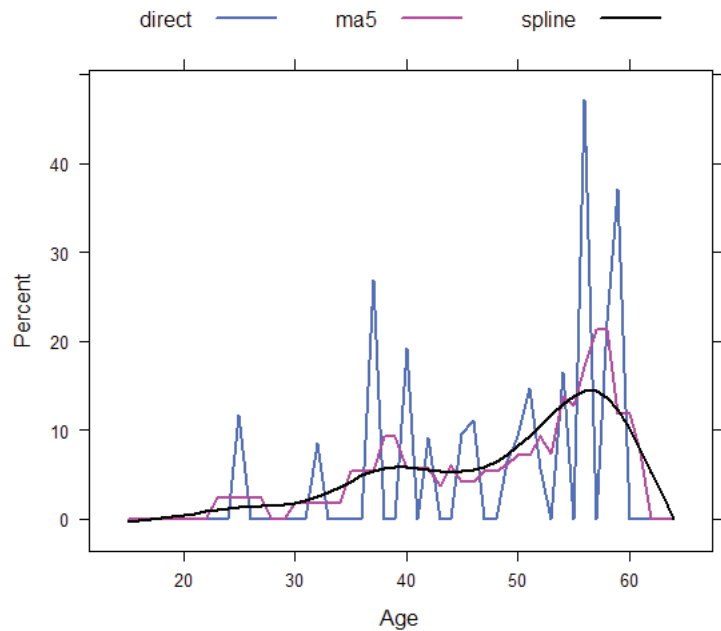
Source: authors' calculations based on KIHBS 2005/06.

Note: see annotations to Figure A2.1 and Table A1.1 in the appendix.

The more detailed cutting into the data, the thinner the cells supporting estimates become. Another relevant question is: how does the smoothing format perform relative to the five-year averages and the direct yearly estimates when data are more detailed? The answer is that it performs well. To show how good the performance is we pick the share of people, young people and adults, with a formal job but focus on males in urban areas with no formal education. Figure A2.4 makes apparent that direct year estimations (the direct line in the graph) can be very unstable, with values that range from 0 up to 25 percent (these can be 0 because there are no data entries or because 0 percent have a formal job). The graph shows that spline smoothing (the smooth line) that we chose here renders a smoother behaviour than the five-year moving average (ma5 line). In general, the five-year moving average and the spline smoothing give a similar picture, suggesting that the spline smoothing presentation is more advantageous for our purposes.

If again we ask: how different will the presentation of results following two standard formats (young people and adult and five-year average age groups) be from the smoothed format adopted here? Figure A2.5 below allows us to compare results. To illustrate the differences, we chose the share of people employed in formal jobs within the indicated population groups. If we compare the share of formal employees among young people and that among adults, we find that the share among adults is about 5 percent, while the share among young people is about 1 percent (shown by the age2 line). A more detailed and perhaps meaningful comparison arises when we look at five-year youth age groups and adults. Here we see that the share among young people aged 20–24 years is larger than the share among any other young age group (age5 line). This result is a bit puzzling: why does the proportion decrease for those aged 25–34 years if the proportion for adults is 5 percent? The smoothing presentation avoids such jumps in the estimates of the share in formal employment and suggests that the share of young people in formal jobs rises continuously with age but that the pace of the increase is not constant; notably, the proportion rises rapidly for age groups older than 27 years (smooth line).

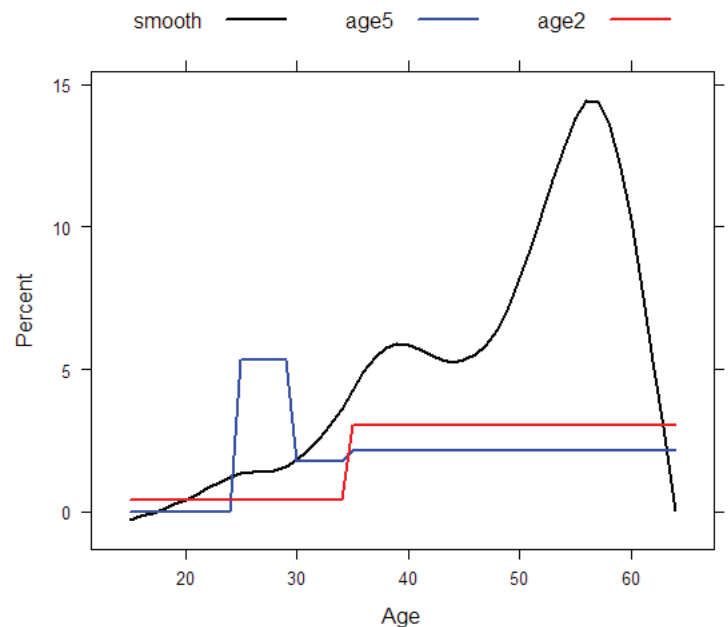
Figure A2.4 Proportion of urban males with no formal education that have a formal job (percent)



Source: authors' calculations based on KIHBS 2005/06.

Note: see annotations to Figure A2.1.

Figure A2.5 Proportion of people with a formal job by years of age (percent)



Source: authors' calculations based on KIHBS 2005/06.

Note: age2 refers to estimates that result from splitting the working age population in two: young people and adults; age5 refers to estimates that result from dividing the working age population in four youth groups and adults; smooth refers to the cubic spline smoother estimate.