

Training of

594
specialized
volunteers

on affected structure
evaluation



national evaluation and
construction standards
issued



470
families

have reactivated their
businesses in urban
areas in the province of
Manabí, 64% are
women, with an
average of 43% increase
in sales



18.780 m³

of debris removed in Las
Gilces and Riochico

ECUADOR

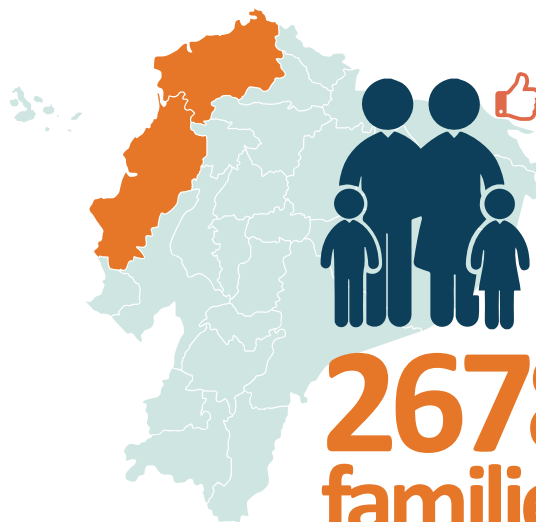
ONE YEAR AFTER

THE EARTHQUAKE

UNDP SUPPORT TO THE RECOVERY PROCESS



Empowered lives.
Resilient nations.



2678
families

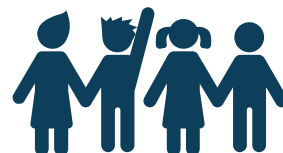
reactivated
their production
in rural areas in
Esmeraldas and
Manabí

thanks to technical assistance, training and the infrastructure
repair, with an average increase of 50% in sales



Support for the
relocation process
of **1.700**
merchants

in Tarqui neighborhood in
Manta



29

communities

have risk management
and emergency response
plans



269

national
and local
institutions
are trained

in coordination
mechanisms and in
response and emergency
response